



Meepo V2 Electric Skateboard Remote Accelerator Cable Replacement

In order to control the speed of your electric...

Written By: Emmaline Sylvester



INTRODUCTION

In order to control the speed of your electric skateboard you must have a functioning accelerator. This step-by-step guide will assist you with replacing your accelerator in your Meepo V2 Electric Skateboard Remote in order to guarantee your remote is fully functional and safe to use.

TOOLS:

Phillips #00 Screwdriver (1)

Step 1 — Accelerator Cable



- Peel off the brand sticker from the back of the remote.

Step 2



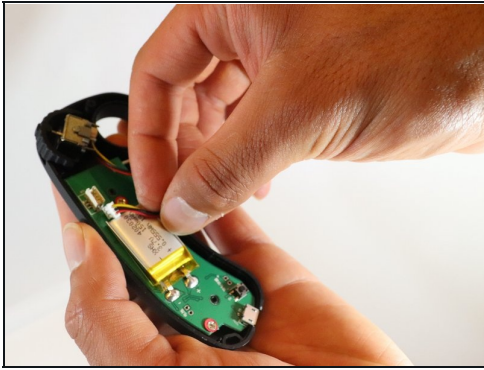
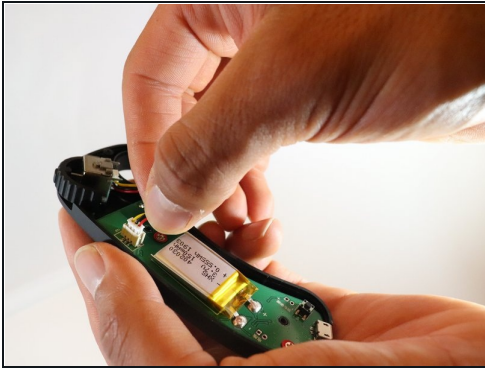
- Using a Phillips #1 screwdriver remove the three screws.

Step 3



- Lift the backside of the remote off.
- The marked area is the accelerator cable that needs to be removed.

Step 4



- Unplug the connector and remove the accelerator cable.

To reassemble your device, follow these instructions in reverse order.