

Written By: Katrina Ternus



## INTRODUCTION

This guide shows how to remove and replace the battery on the Lenovo ThinkPad X1 Yoga (model number 20FQ005YUS). If the computer has a short battery life or is not charging at all, the battery should be replaced.

**For your safety, discharge your battery below 25% before disassembling your device.** This reduces the risk of a dangerous thermal event if the battery is accidentally damaged during the repair. If your battery is swollen, [take appropriate precautions](#).



### TOOLS:

- [Phillips #1 Screwdriver](#) (1)
- [iFixit Opening Tools](#) (1)
- [Tweezers](#) (1)



### PARTS:

- [Lenovo ThinkPad X1 Yoga 1st Gen and X1 Carbon 4th Gen 56 wH Replacement Battery](#) (1)
- [Lenovo ThinkPad X1 Yoga 1st Gen and X1 Carbon 4th Gen 52Wh Replacement Battery](#) (1)

## Step 1 — Back Cover



**i** Be sure to power off and unplug your device before you begin your repair.

- Flip the computer over so the bottom is facing up.
- Remove nine 4mm Phillips #1 screws from the bottom of the computer.
- Use an iFixit opening tool to pry the back cover off of the laptop.

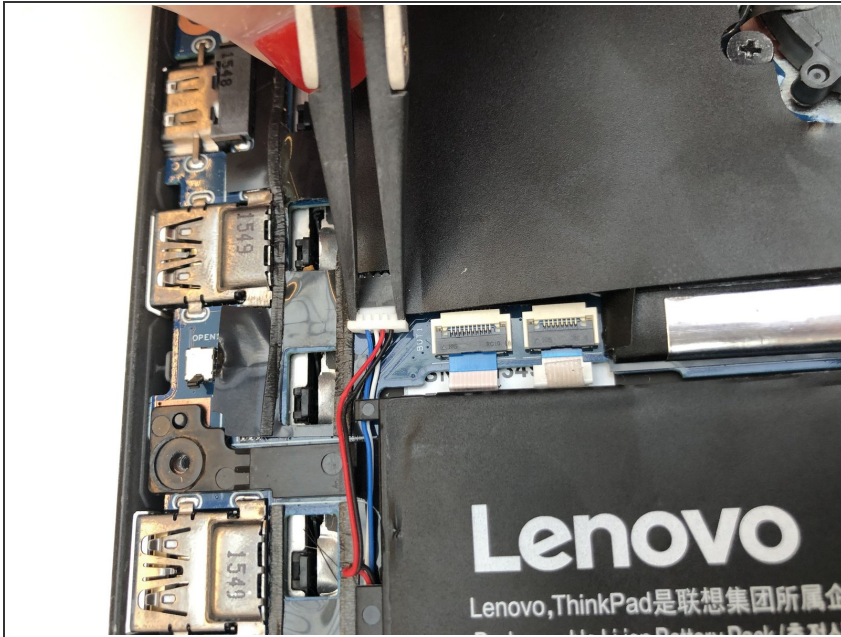
## Step 2 — Speakers



- Remove the five 4.5mm Phillips #1 screws that secure the battery.

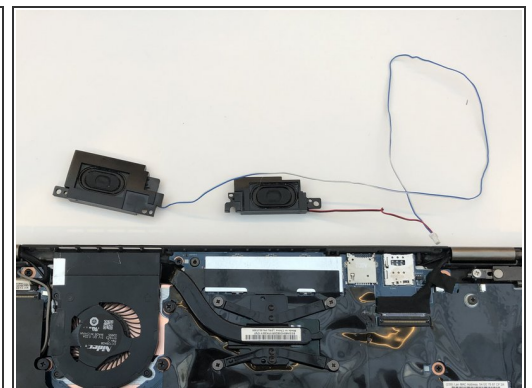
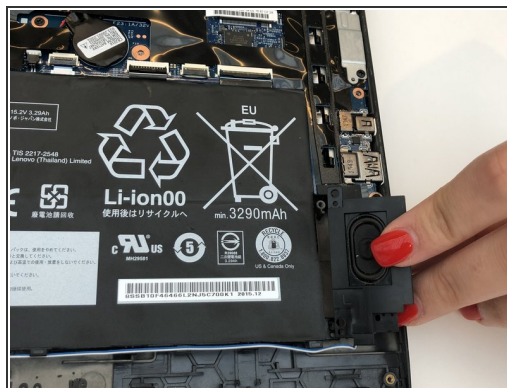


## Step 3



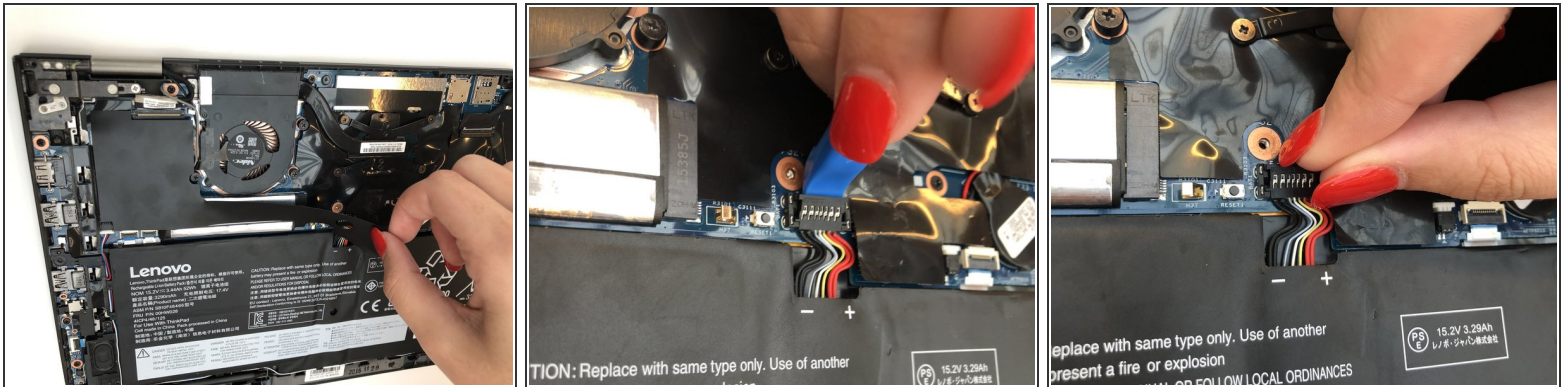
- Using a pair of tweezers, push the sides of the white speaker wire toward the battery (where it says Lenovo) to unplug it.

## Step 4



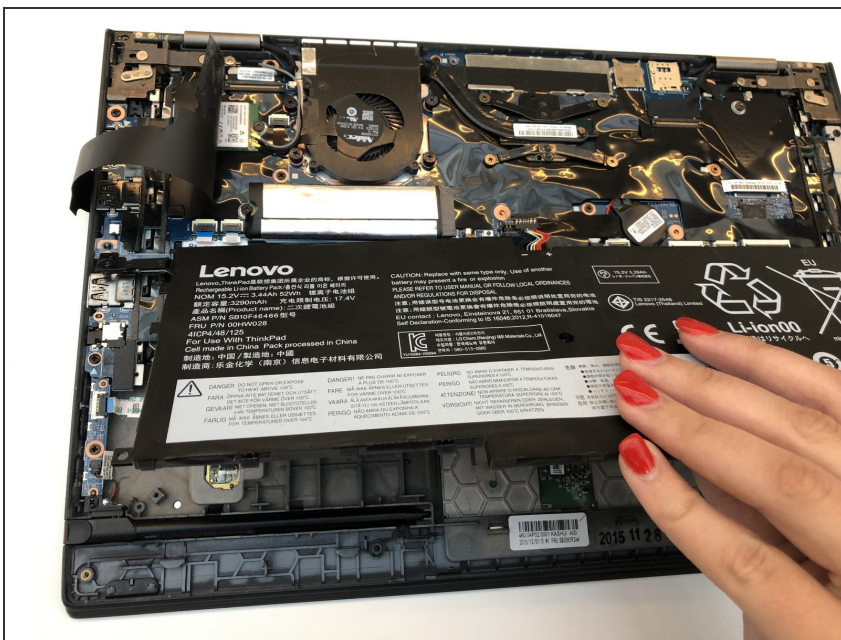
- Remove the speakers from either side of the battery. The connecting wire will unthread from the sides of the battery.

## Step 5 — Battery



- Lift the plastic black strip cover that's laying over the battery connector.
- Use the iFixit opening tool to flip up and disconnect the black battery connector from its motherboard socket.
- Gently pull the connector away from the battery to pull it out of the slot.

## Step 6



- Lift and remove the battery away from the computer.

To reassemble your device, follow these instructions in reverse order.

Take your e-waste to an [R2 or e-Stewards certified recycler](#).

Repair didn't go as planned? Try some [basic troubleshooting](#), or ask our [Answers community](#) for help.