

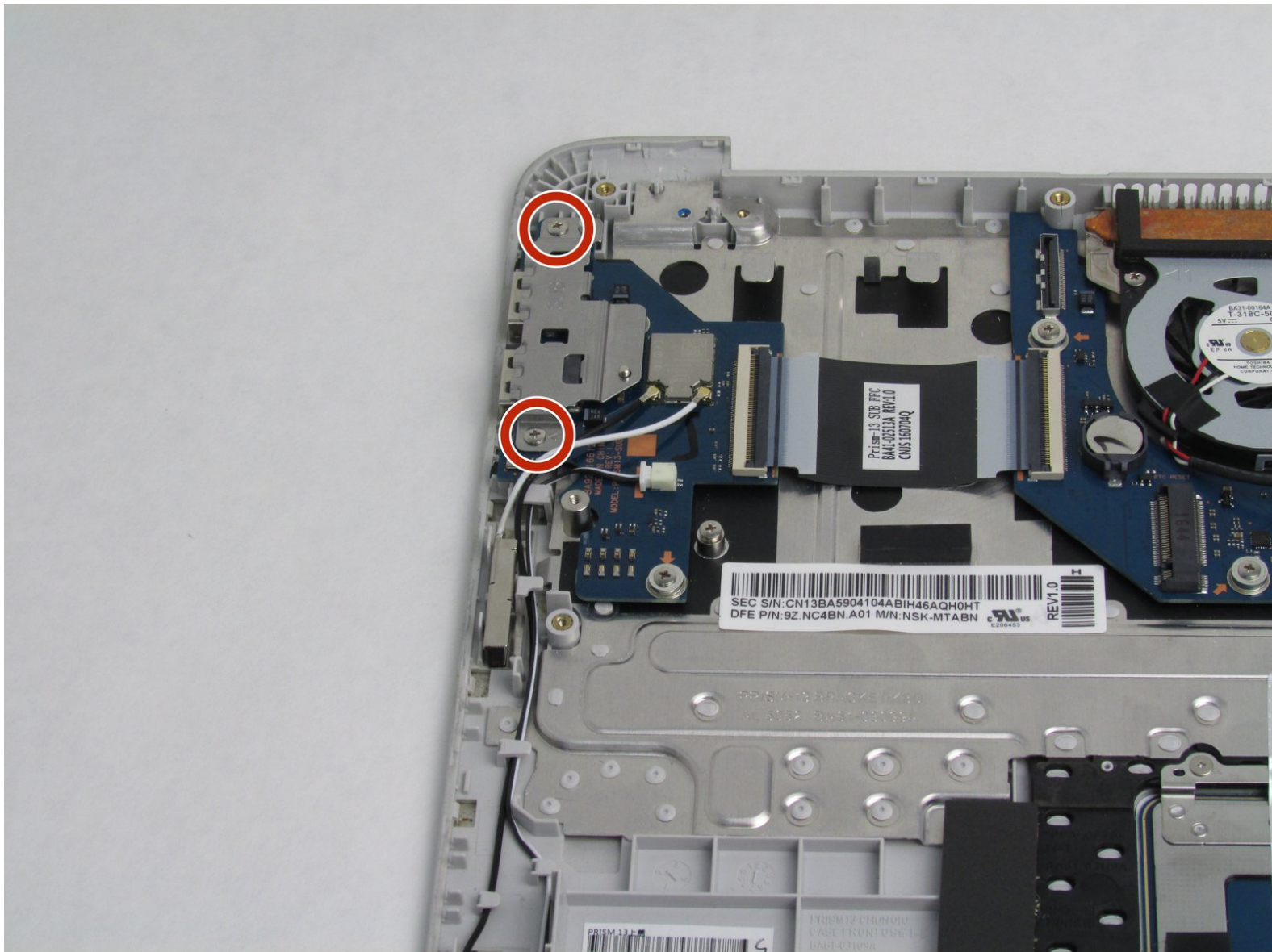


Samsung Notebook 7 Spin NP740U3MK01US

Wi-Fi Card Replacement

This guide will show you how to replace the wi-fi card in the Samsung Notebook 7 Spin NP740U3MK01US.

Written By: Alexander Ulman



This document was generated on 2020-11-28 07:38:21 AM (MST).

INTRODUCTION

This is a guide to replace the Wi-Fi card on the Samsung Notebook 7 Spin NP740U3MK01US. However, it is extremely difficult to replace the Wi-Fi card itself so this guide shows how to replace the whole USB board that the Wi-Fi card is attached to. If you are unable to connect to a wireless network use this guide to replace your Wi-Fi card.



TOOLS:

- [iFixit Opening Tools](#) (1)
 - [Spudger](#) (1)
 - [Phillips #00 Screwdriver](#) (1)
-

Step 1 — Battery



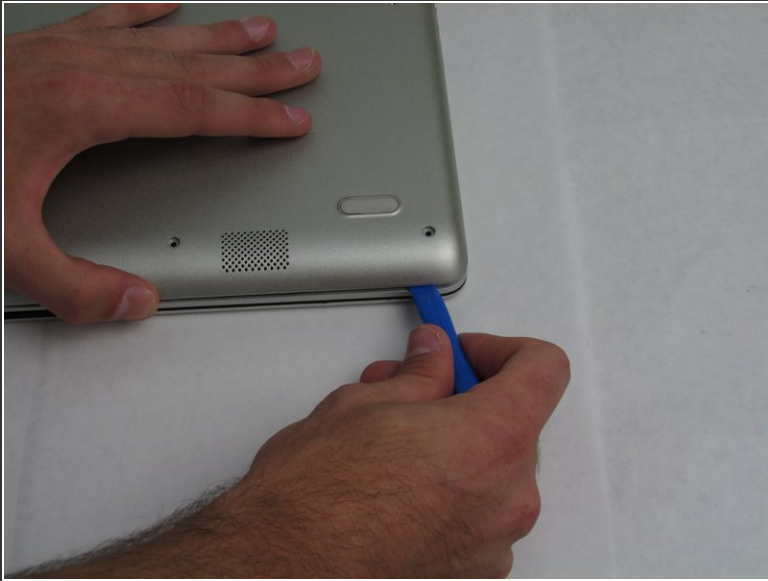
- Flip your laptop over so that the back is face up.

Step 2



- Use a Phillips #00 screwdriver to remove the four 6.5mm screws and the six 4.5mm screws that secure the back plate.

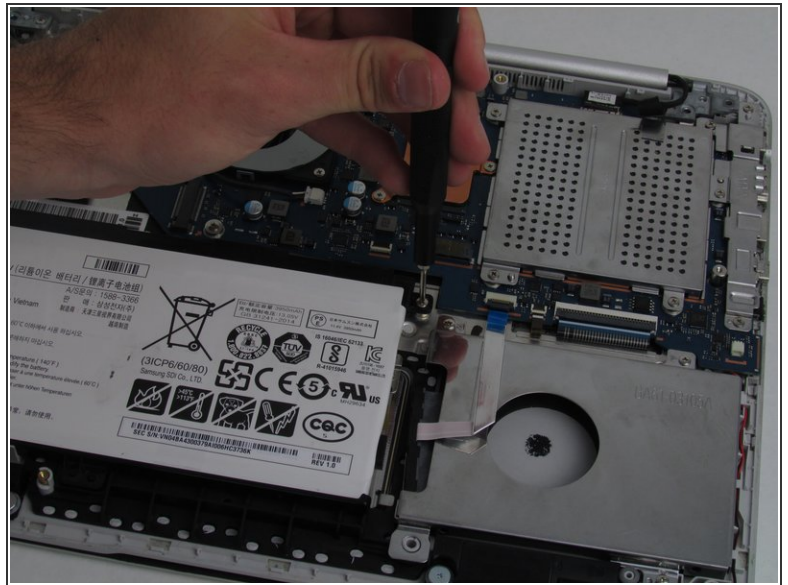
Step 3



- Use a plastic opening tool to remove the back plate from the laptop.

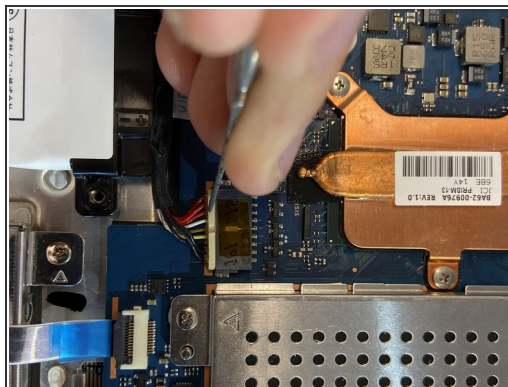
i It is recommended that you start from a corner then run the tool along the edge of the back plate.

Step 4



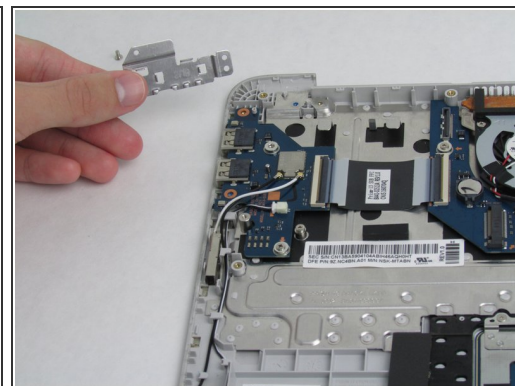
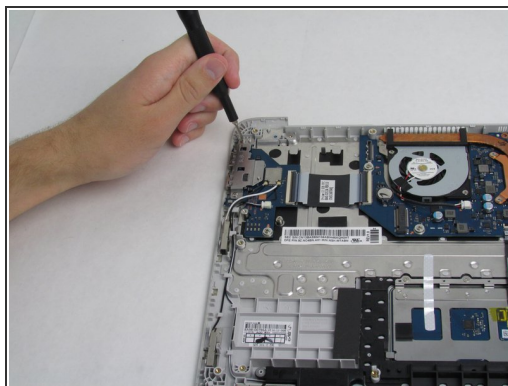
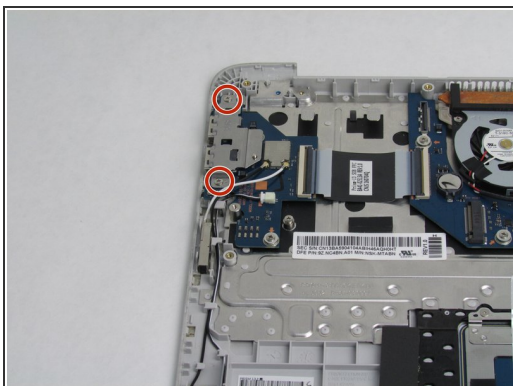
- Use a Phillips #00 screwdriver to remove the three 4.5 mm screws holding the battery in place.

Step 5



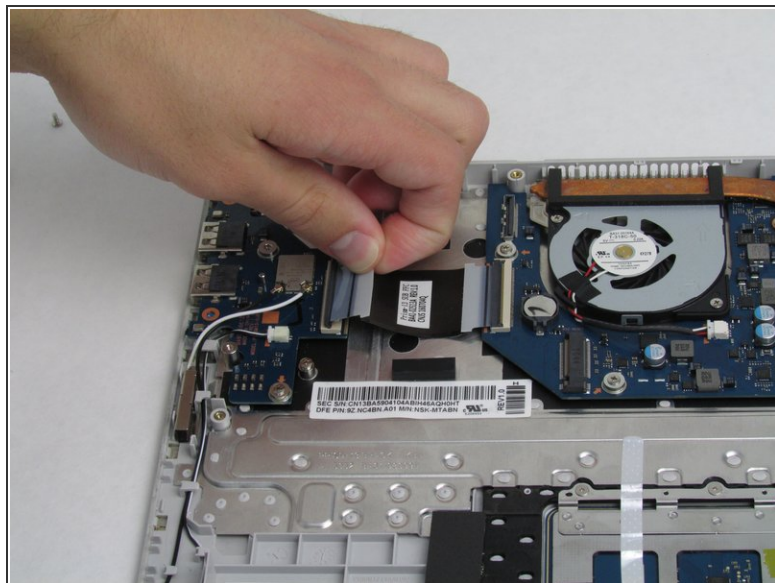
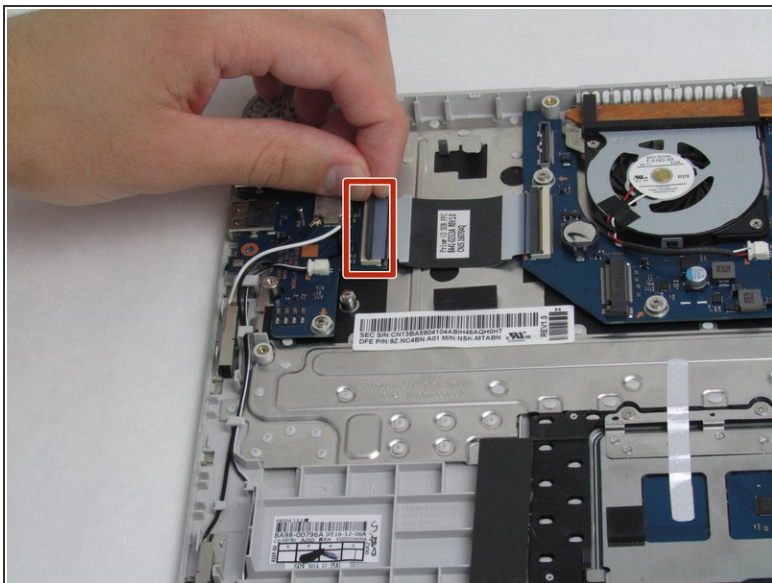
- Use a spudger to pry the battery connecting cable from the laptop and remove the battery.
- ⚠ Using the metal spudger may severely damage the internal components in your device.

Step 6 — Wi-Fi Card



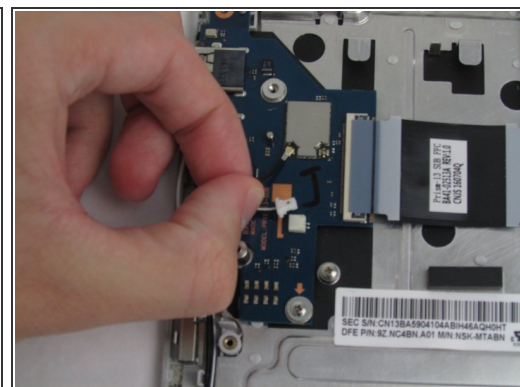
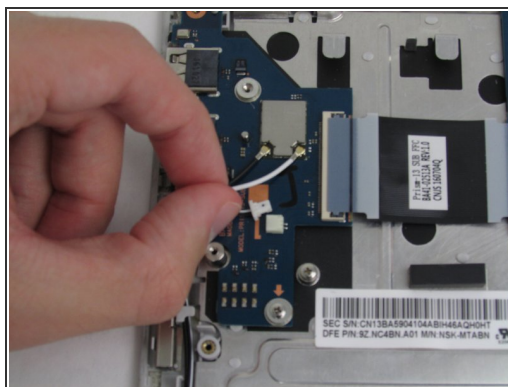
- Use the Phillips #00 screwdriver to remove the two 4.5mm screws holding the cover plate in place.

Step 7



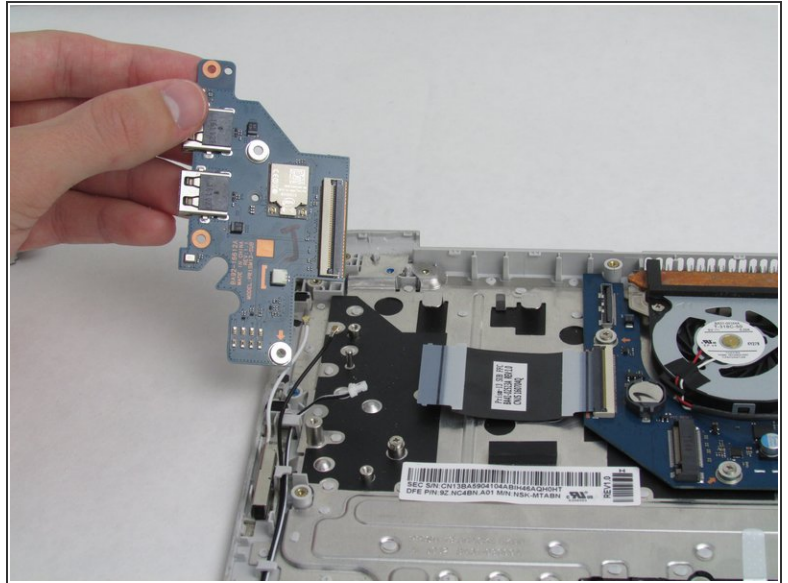
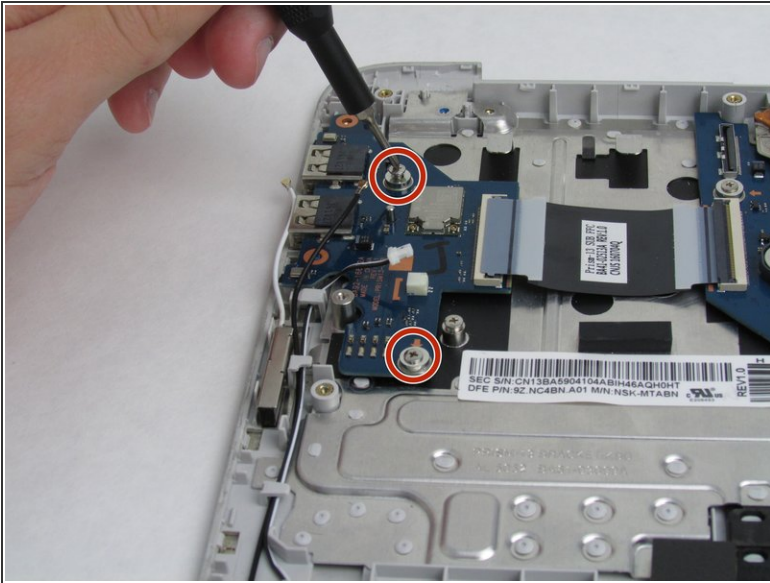
- Remove the black ribbon cable by pulling up on the black cover and sliding out the cable.

Step 8



- Remove the three black and white cables by gently pulling on them.

Step 9



- Use the Phillips #00 screwdriver to remove the two 4.5mm screws holding the USB board down and remove the board.

To reassemble your device, follow these instructions in reverse order.