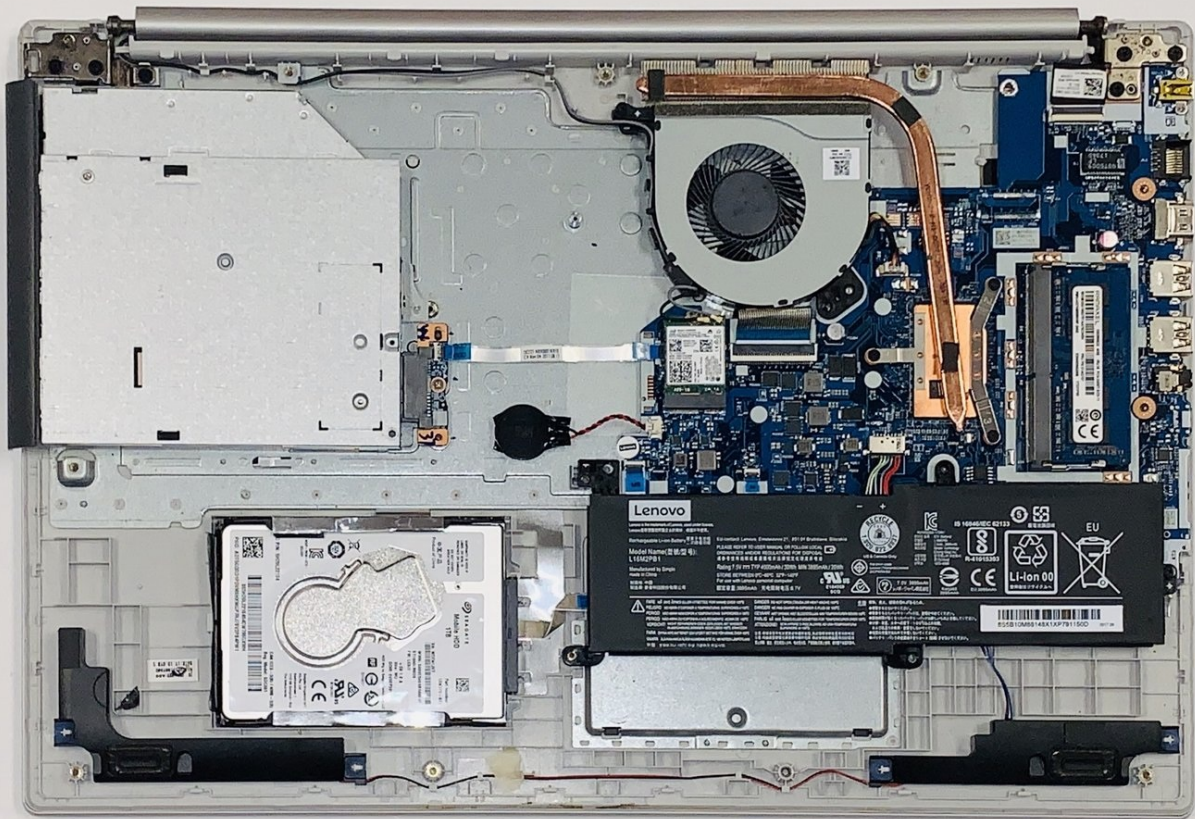




Lenovo Ideapad 320-17IKB Ports Replacement

Use this guide to replace and access a faulty...

Written By: a1235



INTRODUCTION

Use this guide to replace and access a faulty port in your Lenovo IdeaPad 320-17IKB.

The several different ports that this laptop has allows the user to access and connect to other external devices or charge other devices; such as HDMI ports, power connector port, Ethernet port, SD port, CD port, USB ports, and the headphone jack.

If you aren't able to connect to a port or if the port needs to be cleaned, you may need to consider cleaning or replacing the port. Follow the instructions in this guide to access the component.

Before using this guide, check out the [Lenovo IdeaPad 320-17IKB Troubleshooting](#). Be cautious when lifting the back panel off the laptop to not damage any hardware.

Be sure to back up your hard drive before opening your laptop so that you don't lose any data while you're doing the replacement. Make sure to power off your laptop completely and disconnect from any external power source prior to beginning the process.

TOOLS:

[iFixit Opening Tool](#) (1)

[Jimmy](#) (1)

[Tweezers](#) (1)

[Phillips #00 Screwdriver](#) (1)

[Phillips #0 Screwdriver](#) (1)

[Soldering Iron](#) (1)

Step 1 — Back Panel



⚠ Turn off and unplug the computer.

- Flip the laptop over so that the back panel is facing upwards.

Step 2



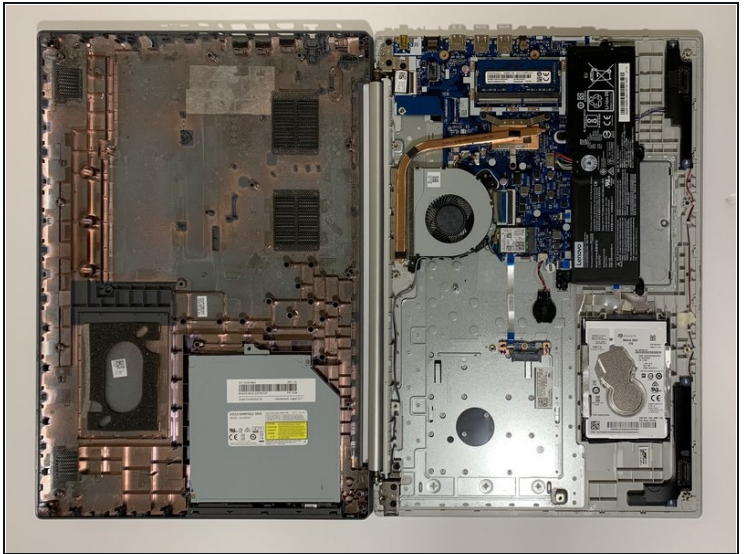
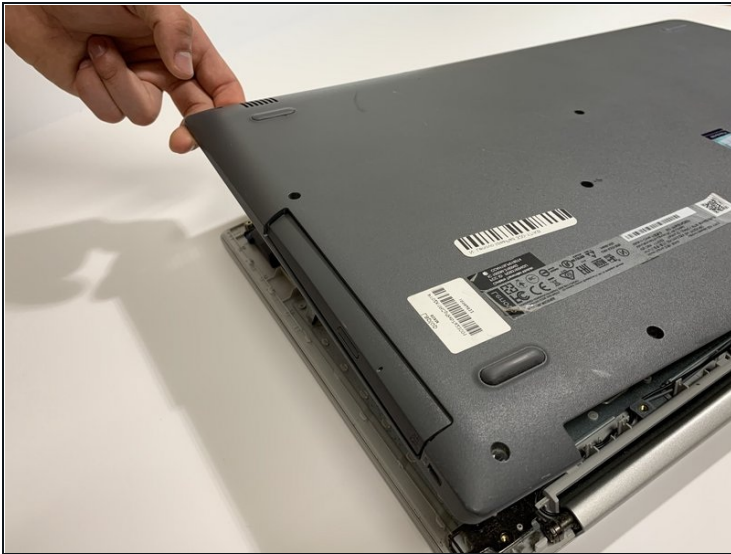
- Remove fourteen 7mm Phillips #00 screws from the back panel.

Step 3



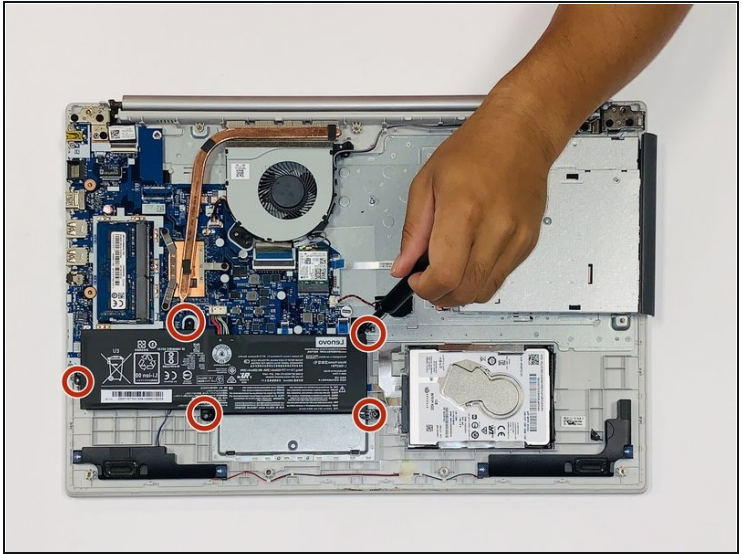
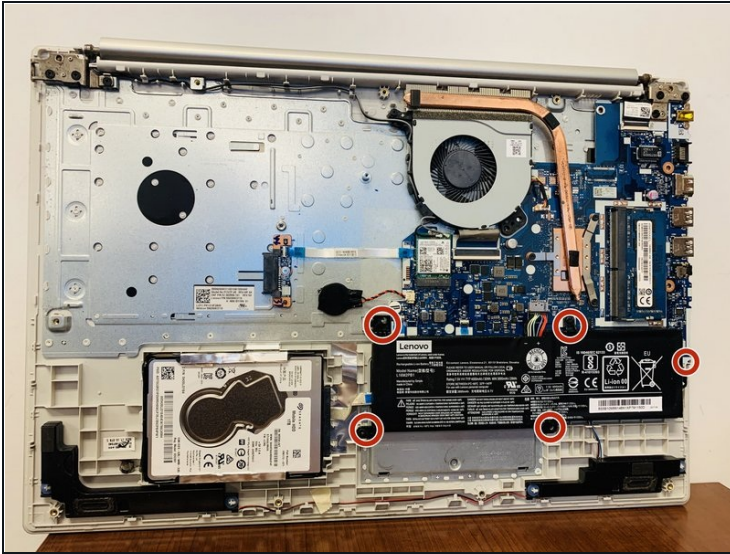
- Carefully remove the optical drive by pulling the bezel away from the laptop.

Step 4



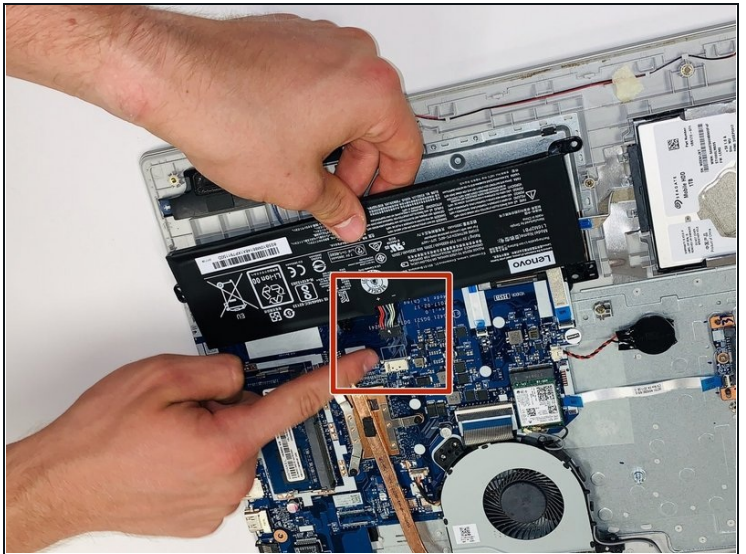
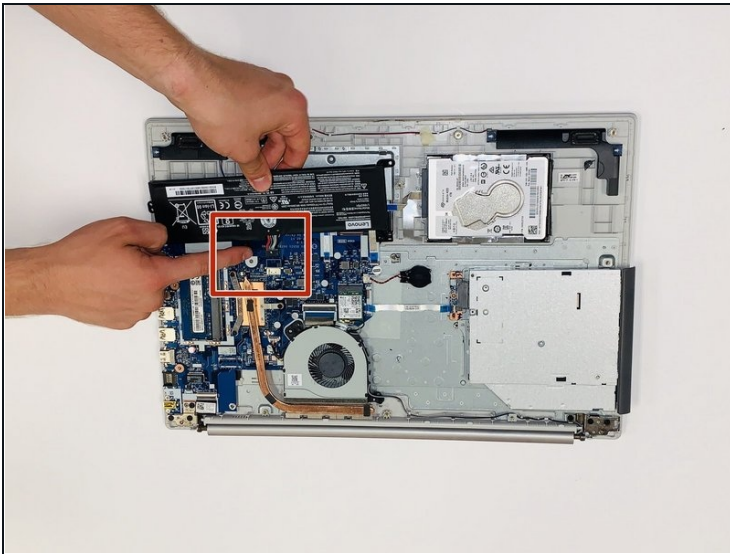
- Use your fingers or an opening tool to gently remove the back panel from the bottom of the laptop.
- Lay both sides of the laptop next to each other.

Step 5 — Battery



- Remove five 7mm Phillips #0 screws from the battery holder.

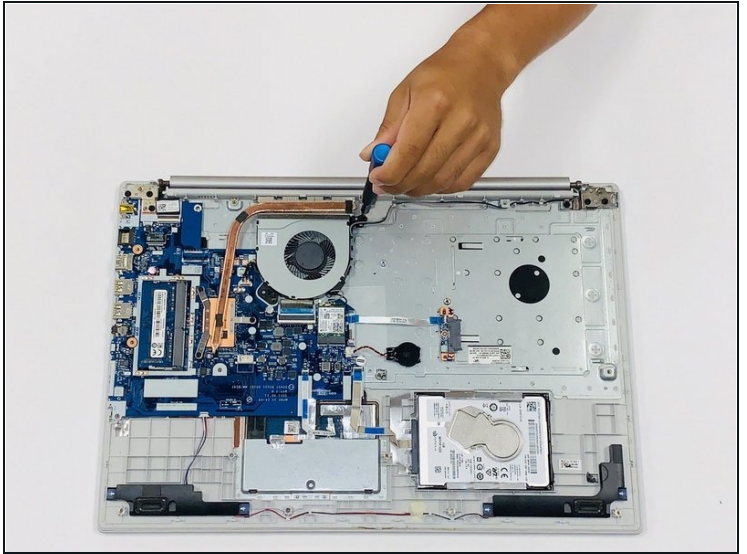
Step 6



- Pinch the connecting cord with one hand and pry the battery connector with the other hand, while gently pulling the connector straight out and towards the bottom edge of the base.

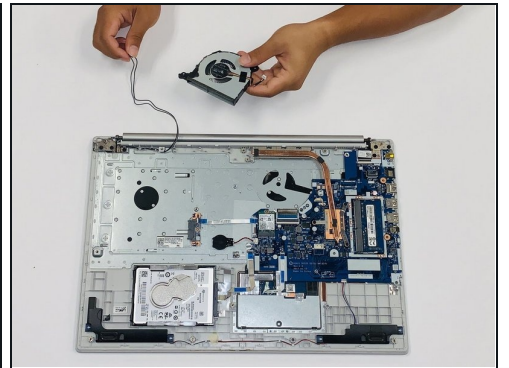
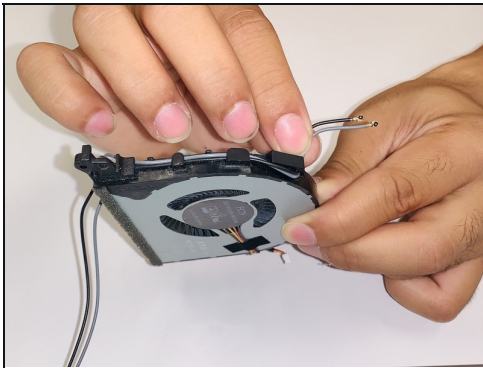
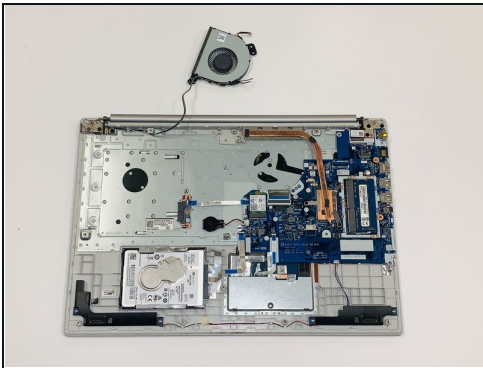
⚠ When removing the battery, use care to keep it flat and do not open the battery because it can result in fire or explosion.

Step 7 — Fan



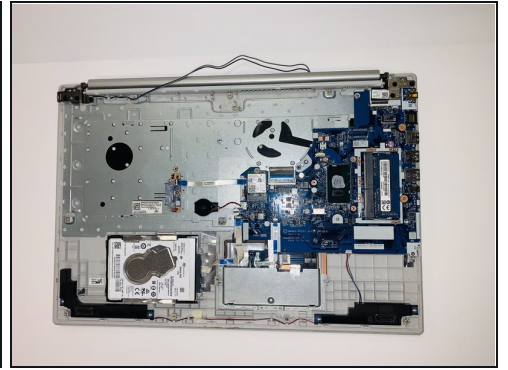
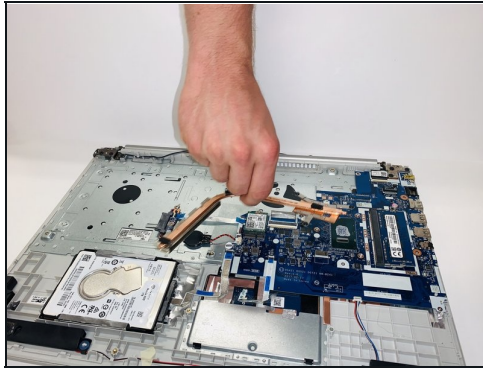
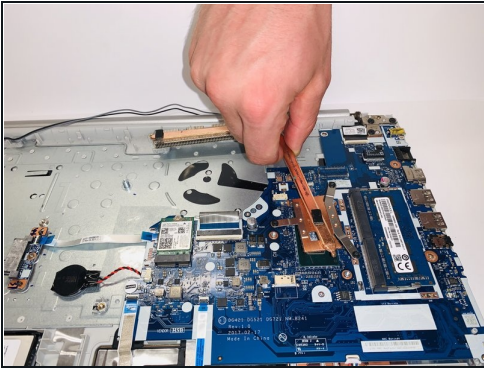
- Remove five 7mm Phillips #00 screws from the cooling fan.

Step 8



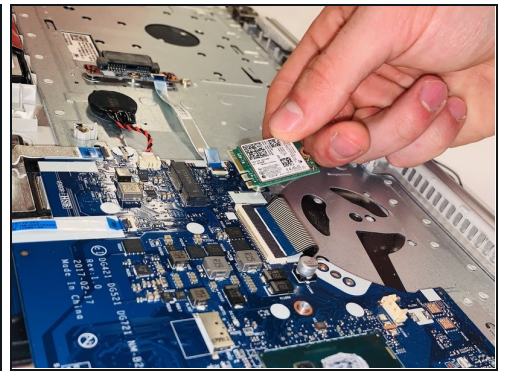
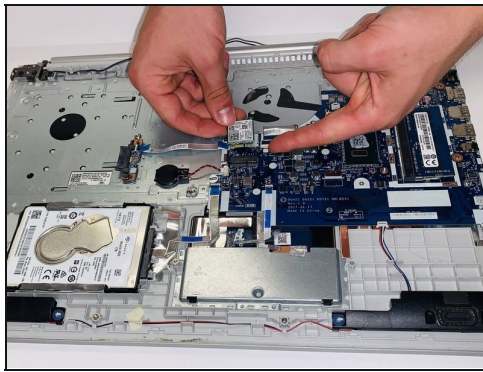
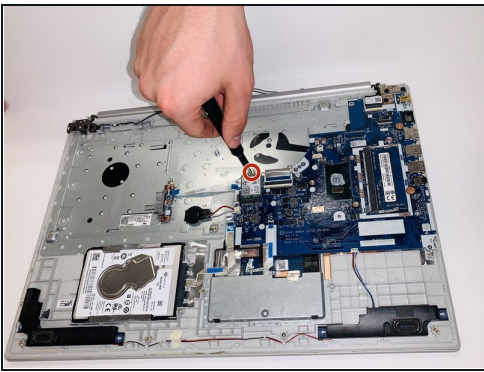
- Gently lift the fan assembly out of the laptop.
- Gently remove the connecting wires from the exterior of the fan by slowly "weaving" the cord between the ridges of the fan.

Step 9 — Heat Sink



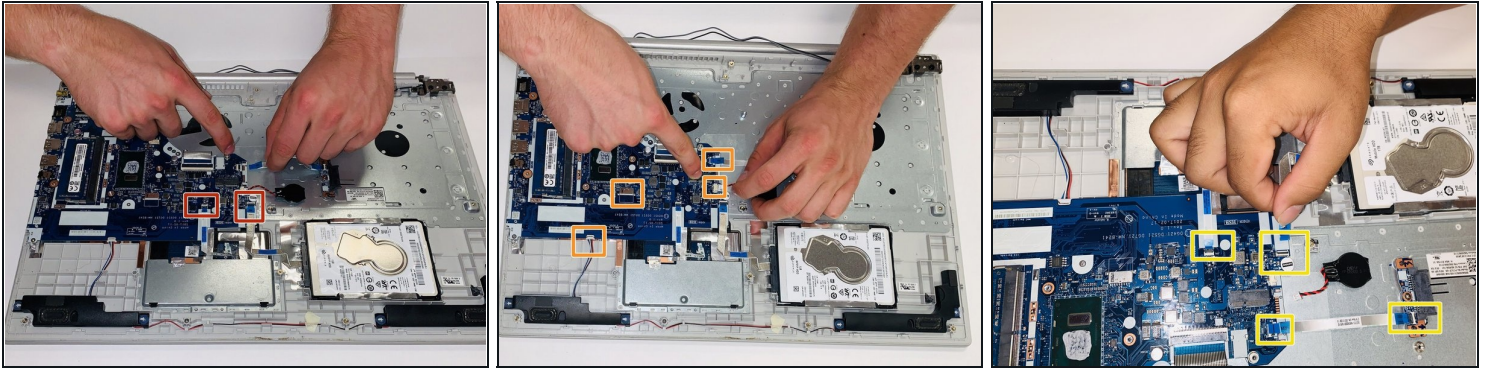
- Gently lift and remove the heat sink and set it aside.

Step 10 — Wi-Fi Card



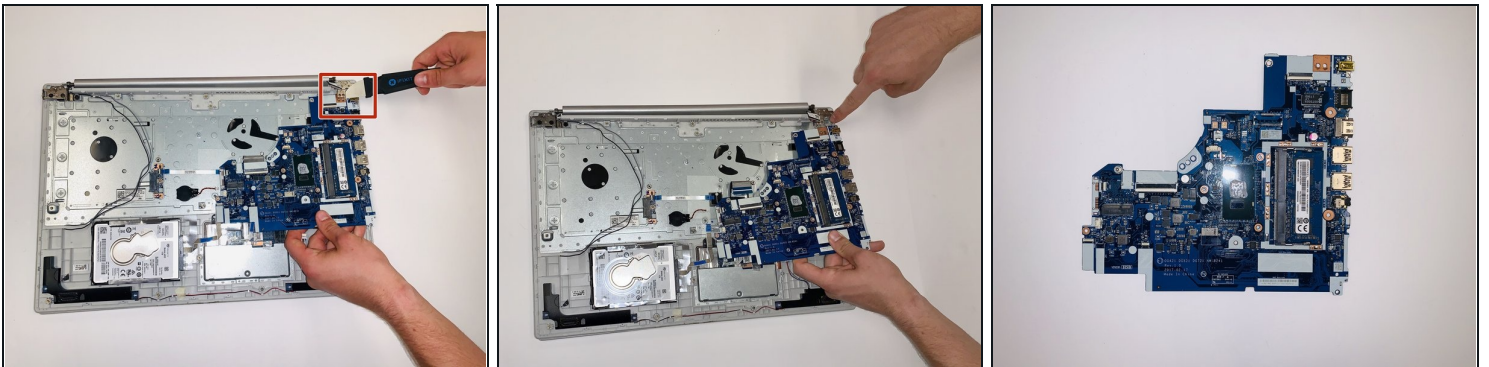
- Remove the single 3mm Phillips #0 screw from the Wi-Fi card.
- Pull the Wi-Fi card straight out of the laptop.

Step 11 — Motherboard



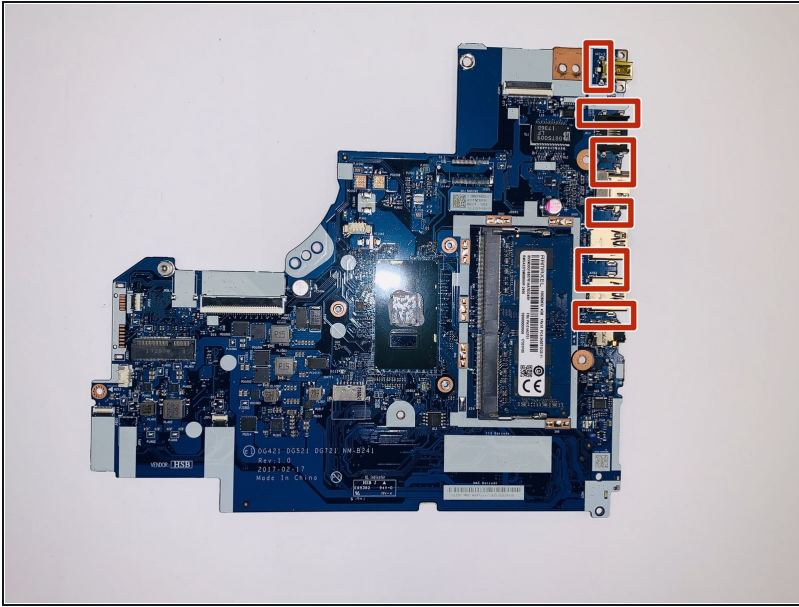
- Gently pull the blue ribbon marked with "MB" connectors.
- Gently remove the other connectors in the picture by pulling them straight out.
- Blue connectors encased in a black holder may require tweezers to unclasp the connector for removal.

Step 12



- Using a Jimmy, gently pry the motherboard from under the corner screw holder with one hand and pull the motherboard out with the other.

Step 13 — Ports



- Locate the terminals that need to be removed.
- ⓘ Ports: 2 USB 3.0 1, USB-Type C, HDMI 4-in-1 card reader (SD, SDHC, SDXC, MMC), RJ-45 LAN
- Clean the terminals with isopropyl alcohol and an old tooth brush.
- ⓘ Follow iFixit's [guide](#) for soldering instructions.
- ⚠ Be careful when using a soldering and de-soldering device as it is very hot.

To reassemble your device, follow these instructions in reverse order.