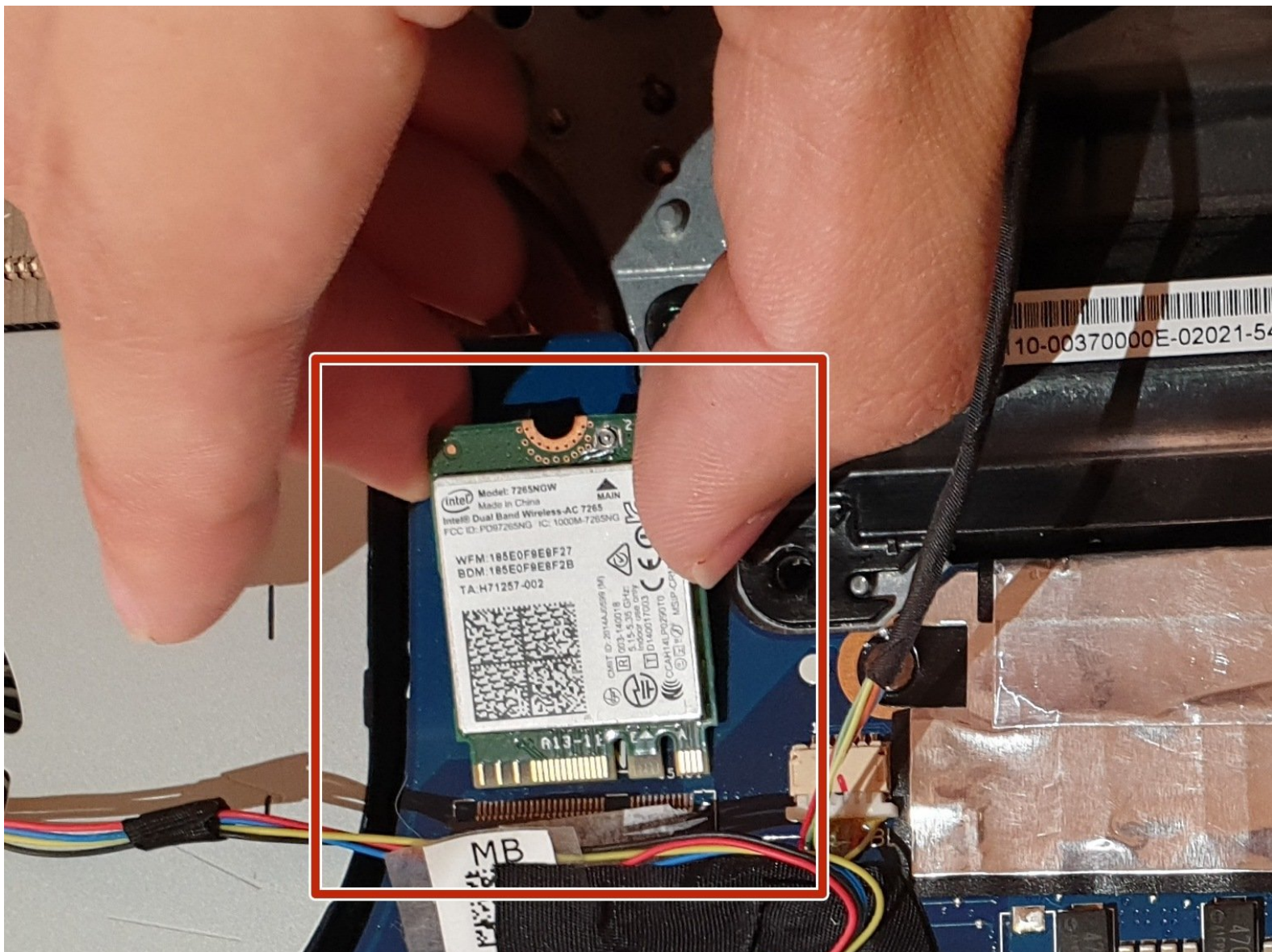




Asus ROG G752V Wireless Card Replacement

This guide will help you take out and replace the wireless card.

Written By: Jeong



INTRODUCTION

A wireless card is used to connect a computer to a wireless network (Wi-Fi).

If your Asus ROG G752V is giving a [blue screen](#) or the wireless card is damaged, this means that the wireless connection is not working and a repair is needed.

Before starting the guide below, it is important to disconnect the charger from the laptop and make sure that the laptop is completely shut off before starting.

Be sure to have all the specified tools that are listed below before starting the replacement process.

Now follow these steps below in order to fix the issue.



TOOLS:

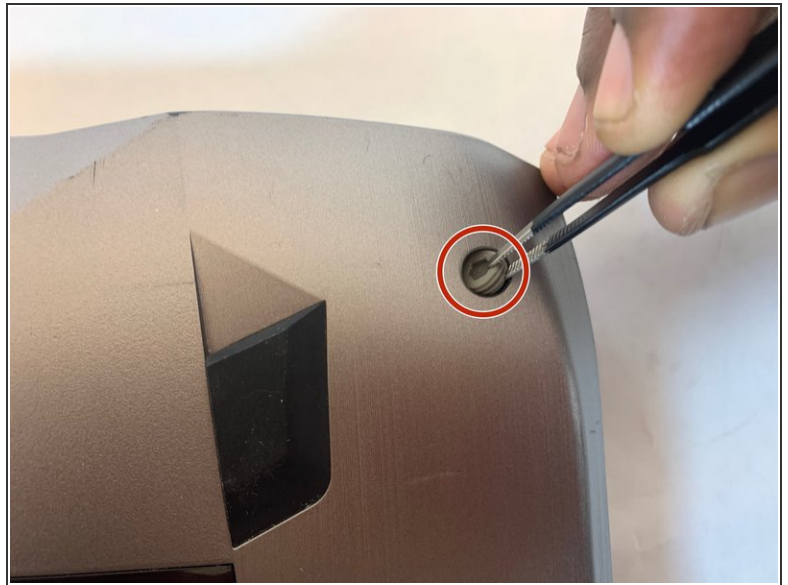
- [Phillips #00 Screwdriver](#) (1)
- [iFixit Opening Tools](#) (1)
- [Phillips #0 Screwdriver](#) (1)
- [Tweezers](#) (1)




PARTS:

- [Asus ROG G752V Keyboard](#) (1)
- [Asus ROG G752V Wireless Card](#) (1)

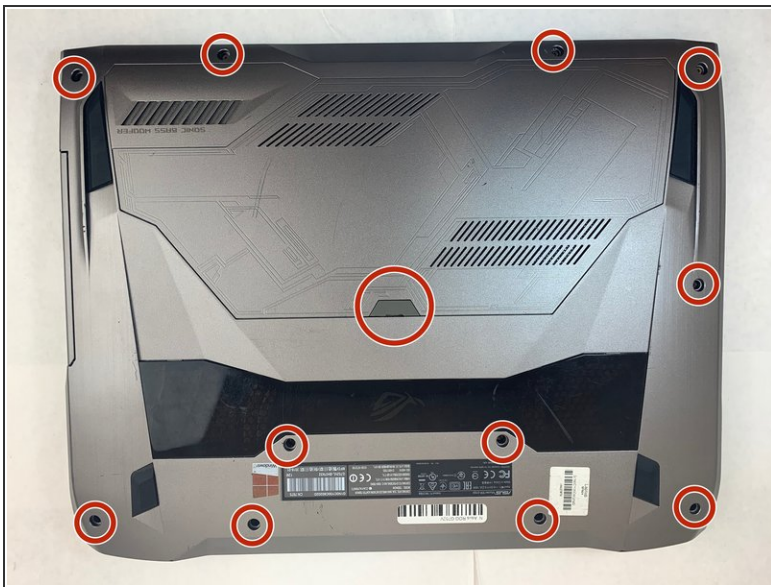
Step 1 — Keyboard



 Make sure you disconnect the charger before starting this guide.

- Using a pair of tweezers, remove all 11 rubber plugs off of the back cover.

Step 2



- Using a Phillips #0 screwdriver, remove all twelve 5.2mm screws on the back of the laptop.

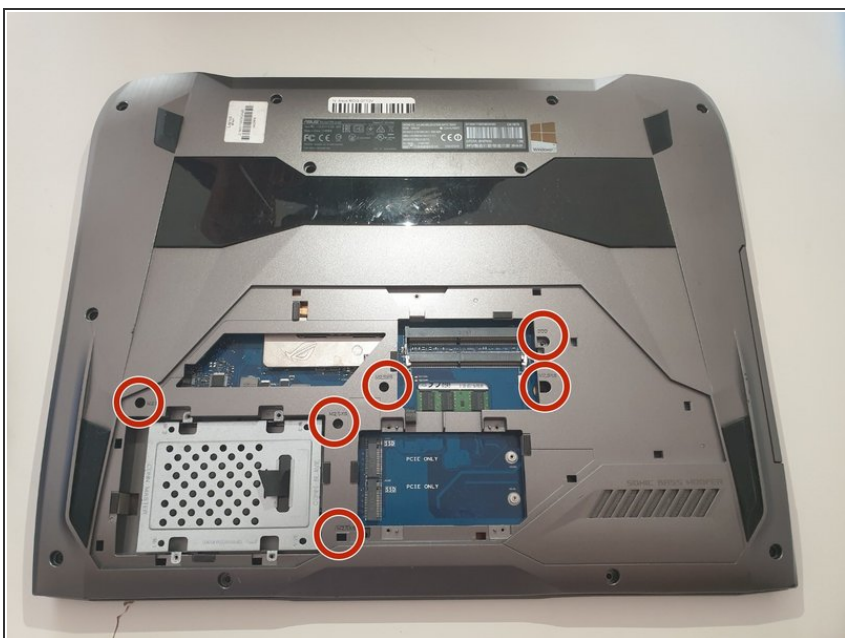
 There is one 5.2 mm screw under the rubber plug in the middle.

Step 3



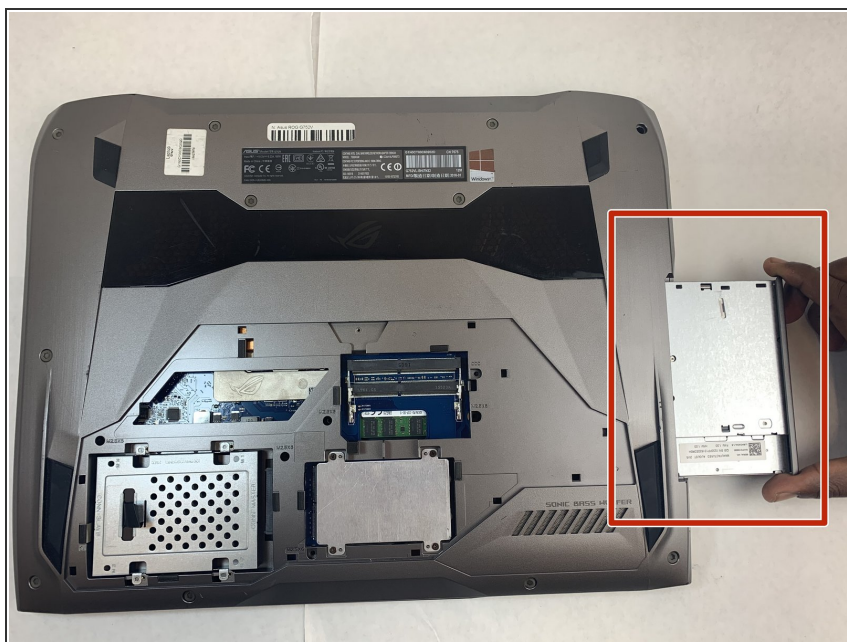
- Pull up the rubber seal and the service cover will come off.

Step 4



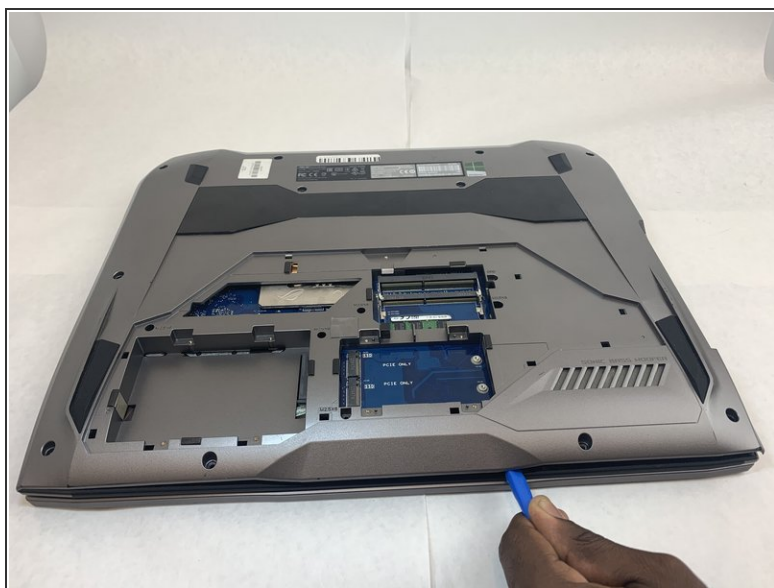
- Using the Phillips #00 screwdriver, remove the six 5.2 mm screws under the service cover.

Step 5



- Using your hands, pull the optical drive out.

Step 6



- Use the iFixit opening tool to pry apart the back panel from the main body of the laptop.
- ⓘ Start from the front side of the laptop and then continue to the side for easier access.

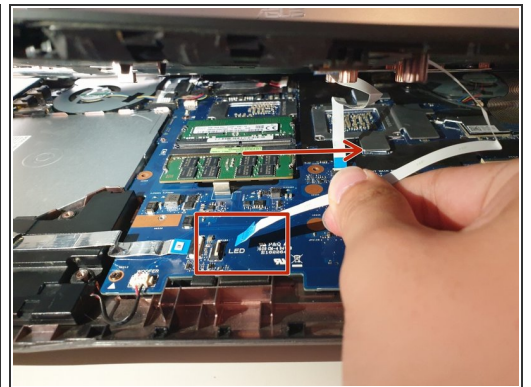
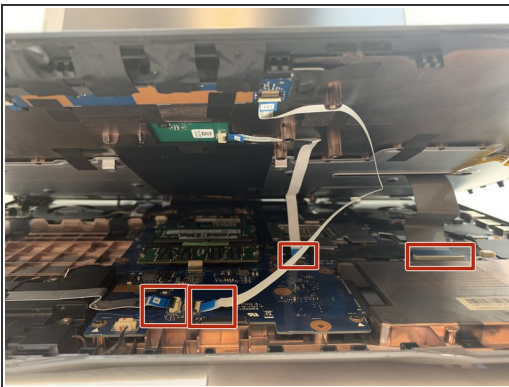
Step 7



- Slowly pull out the keyboard while lifting it about an inch.

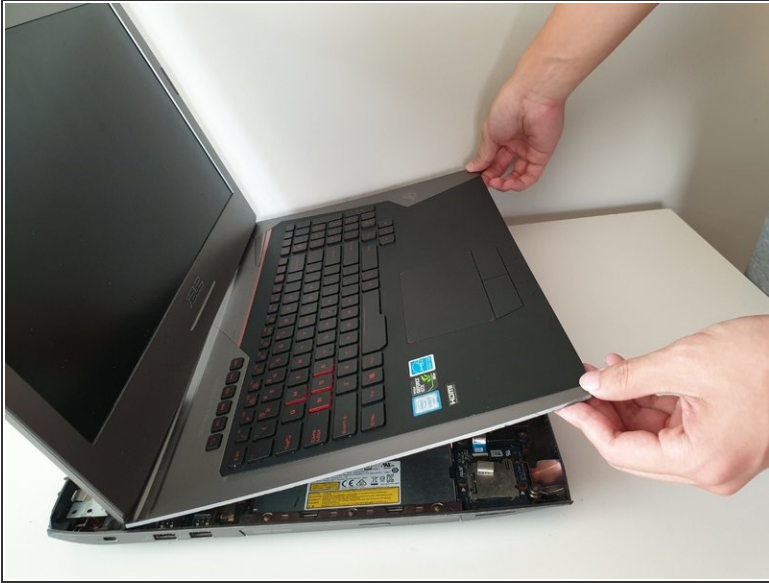
⚠ There are cables attached to the keyboard and motherboard. DO NOT lift it more than 2 inches above the laptop.

Step 8



- Using an ESD safe tool, detach all 3 ribbon cables. To do so, lift up the cable up and out.

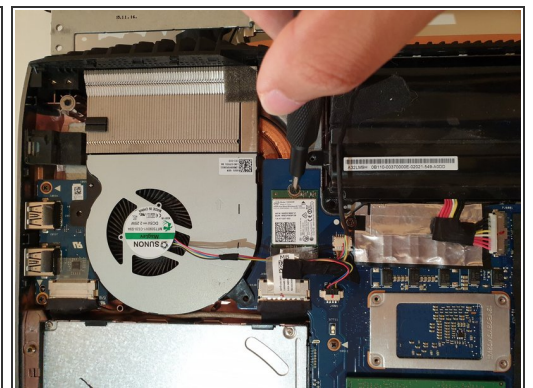
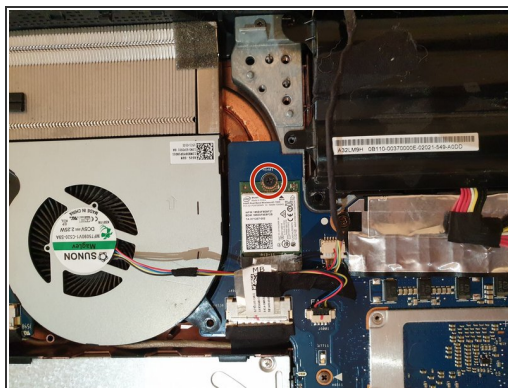
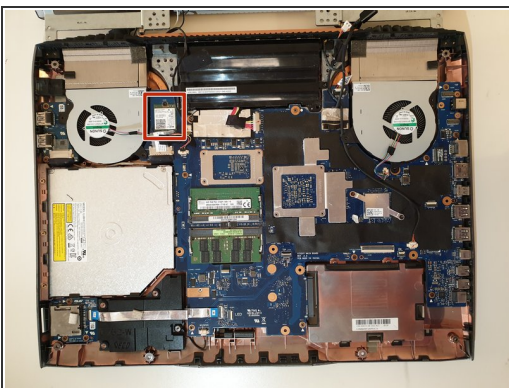
Step 9



- Once the cables are detached, lift the keyboard about 2 inches up and remove it from the rest of the body.

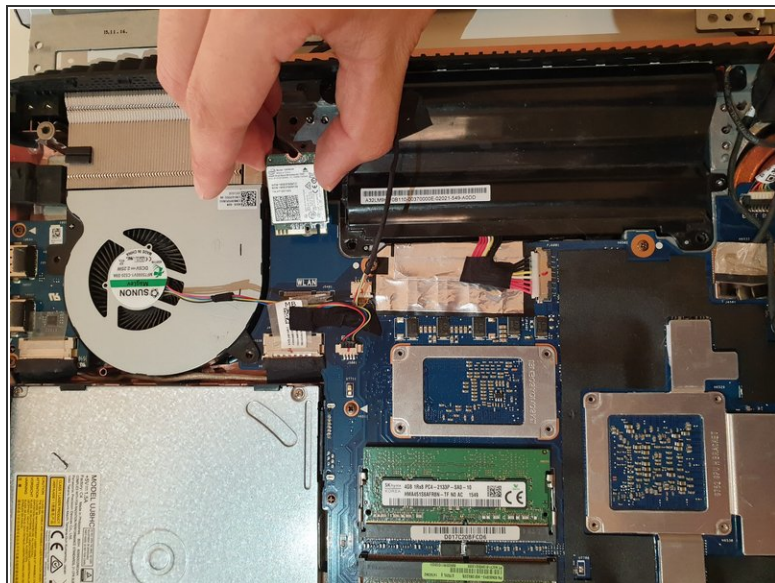
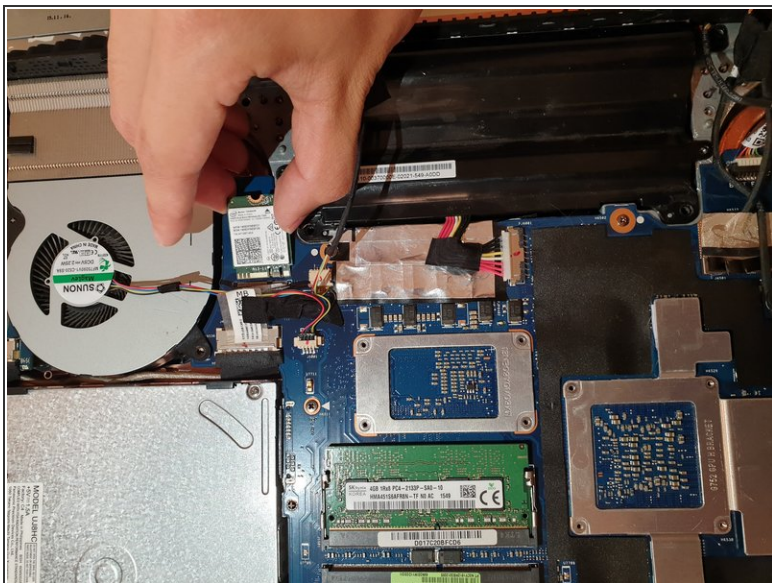
⚠ Make sure that the screen is open like the photo. This will ensure that none your laptop components will not be bent.

Step 10 — Wireless Card



- Unscrew one 3mm Philips #00 screw on the wireless card.

Step 11



- Using your hands, unlatch the wireless card by pulling it out toward the screen.

⚠ Gently wiggle the card and pull it out of the motherboard.

To reassemble your device, follow these instructions in reverse order.