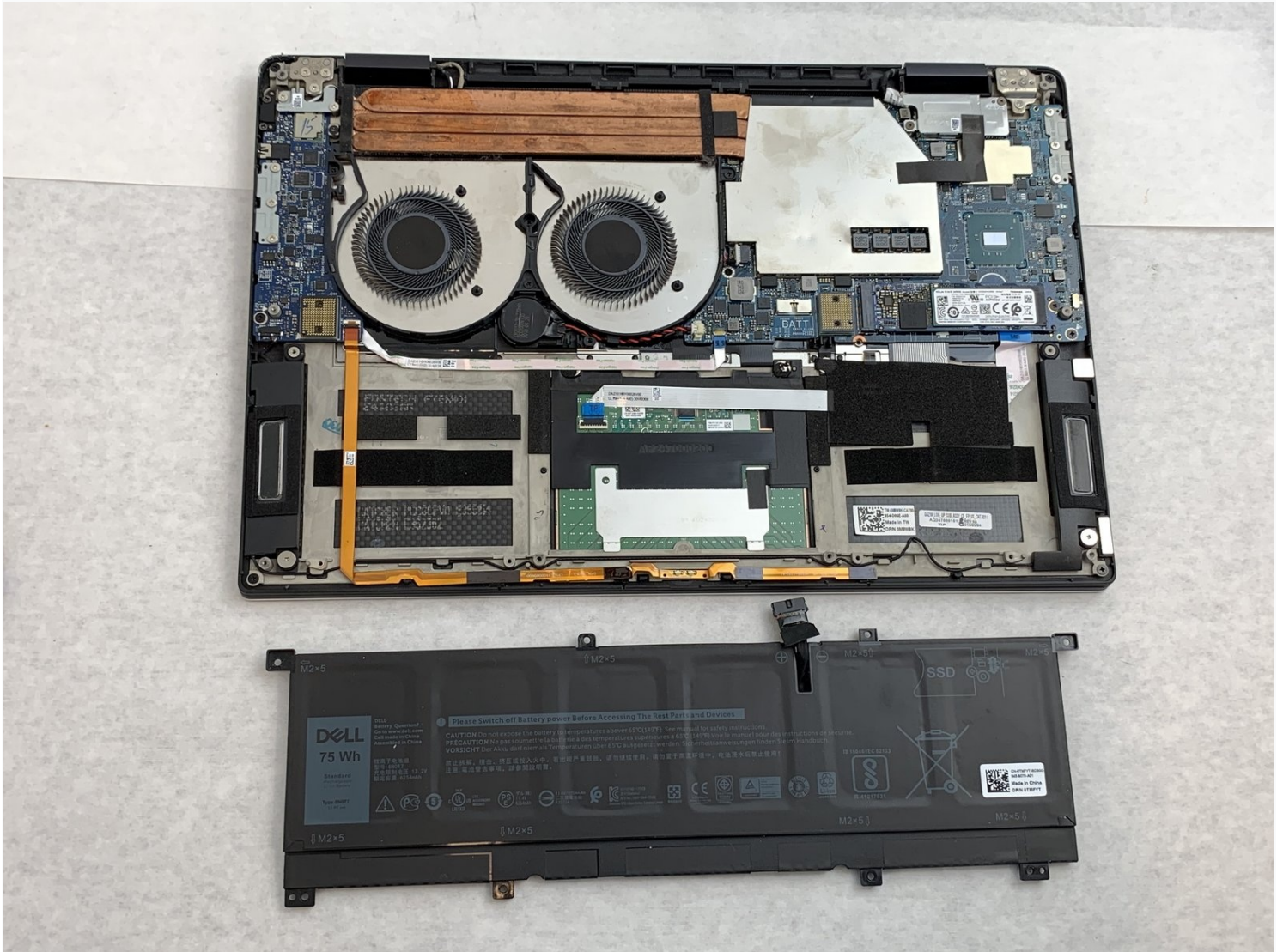




# Dell XPS 15 9575 Battery Replacement

This guide shows the process of how to replace...

Written By: Andre Williams



# INTRODUCTION

This guide shows the process of how to replace the battery in your Dell XPS 15 9575. Batteries are consumable components, that will lose their effectiveness over time. If your battery has a significant amount of charge cycles and is losing its ability to hold a charge for a reasonable amount of time, replacing the battery may give your device a new life. Check out our [Troubleshooting Page](#) for more information on issues you may be experiencing with your device.

Be sure to dispose of a battery properly, and if it appears to be [swollen](#), exercise caution removing and handling it.

## 🔧 TOOLS:

[iFixit Opening Picks \(Set of 6\)](#) (1)  
[T5 Torx Screwdriver](#) (1)  
[Phillips #0 Screwdriver](#) (1)  
[iFixit Opening Tool](#) (1)

## ⚙️ PARTS:

[Dell XPS 15 9575 Battery](#) (1)

## Step 1 — Bottom Cover



⚠️ For your safety, please make sure the device is powered off and the A/C adapter is unplugged.

- Use your T5 Torx driver to remove all eight 3.2mm hex screws holding down the back panel.
- Wedge an opening pick between the back cover and the base of the board, then slightly lift the tool to pop the clips on the back cover off.

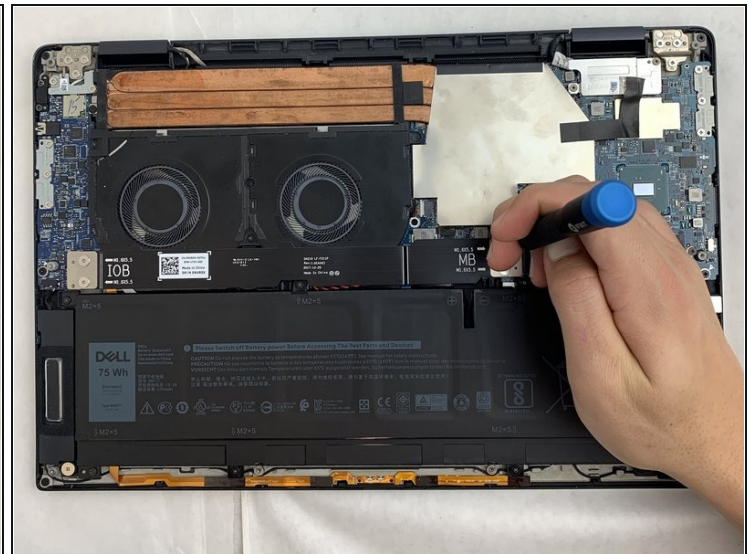
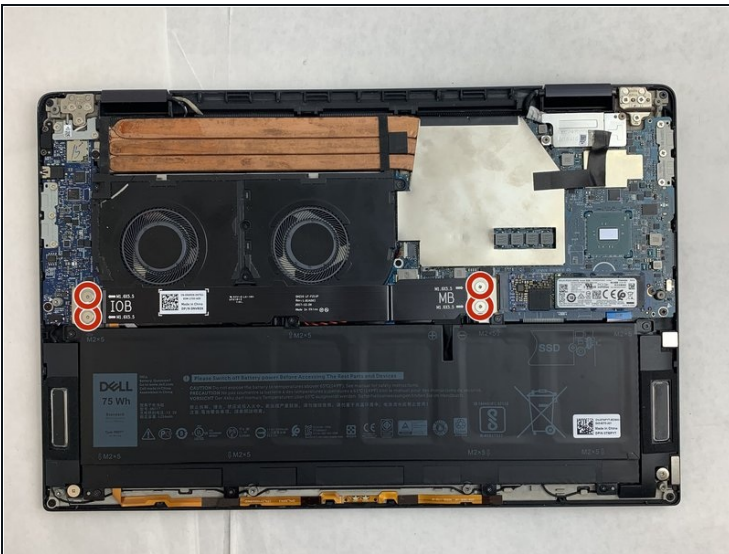
## Step 2



⚠ Make sure all screws are removed before you lift the panel to prevent any damage from occurring.

- Remove the bottom cover from the device when all sides are free.

## Step 3 — Interconnect Cable



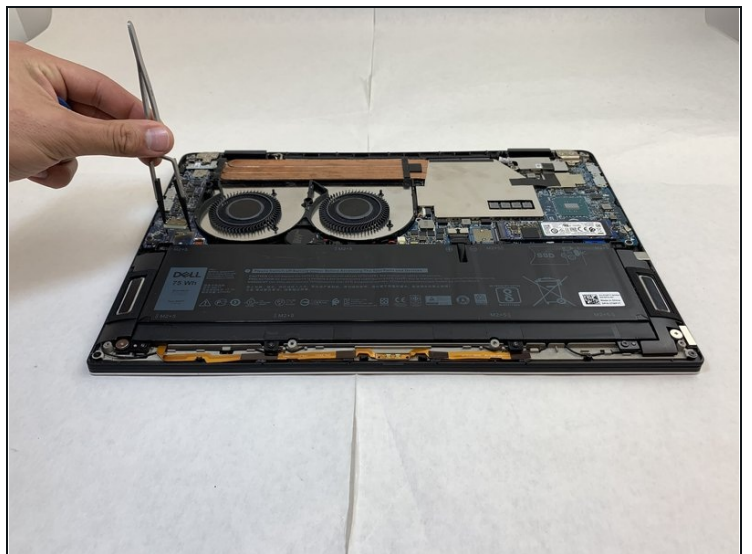
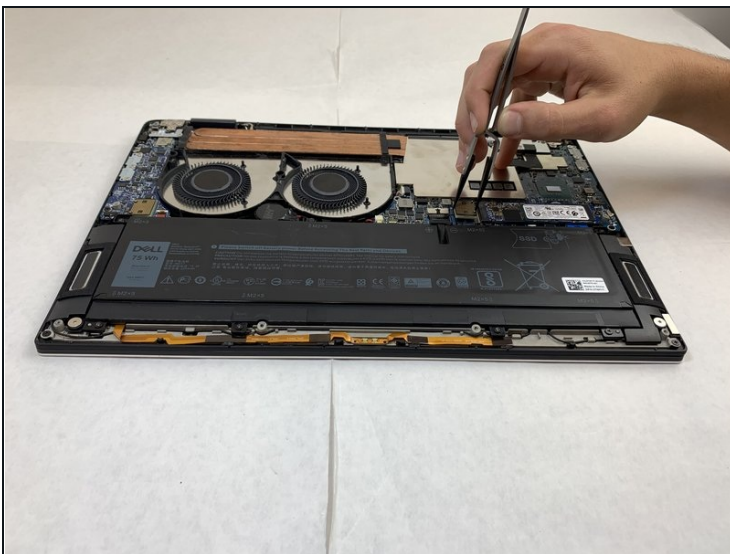
- Use the Phillips #0 screwdriver to remove all four silver 3.2mm screws fastening the interconnect cable.

## Step 4



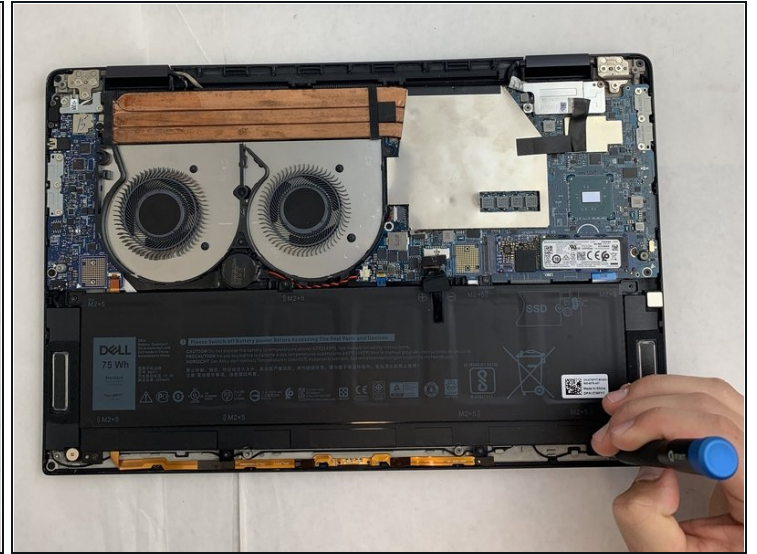
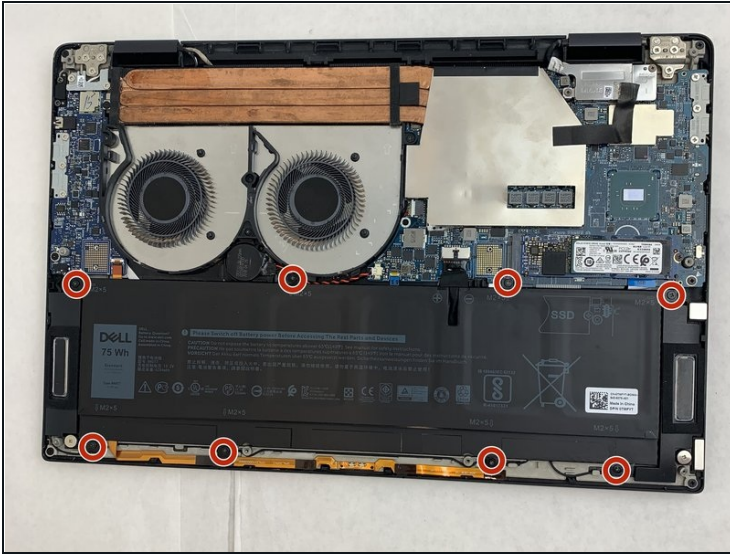
- Carefully wedge the plastic opening pick between the fan and the interconnect cable.
- ① If this position does not release the interconnect cable, slide the opening pick along the edge until it is completely free.
- Remove the interconnect cable.

## Step 5



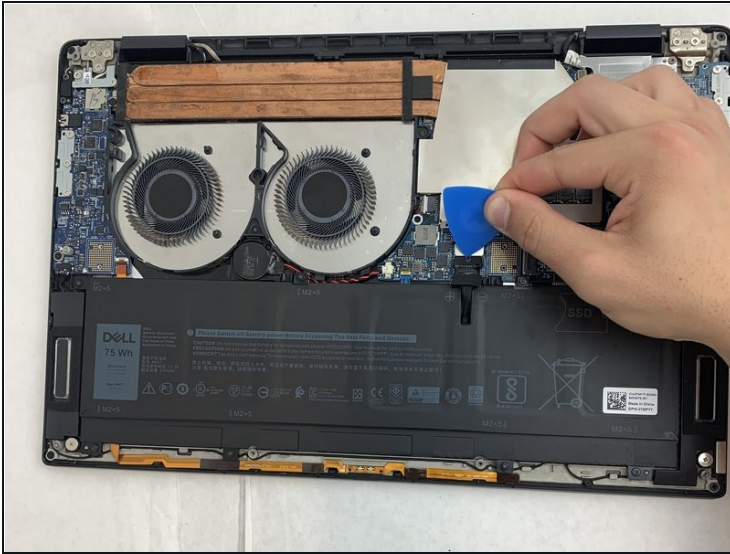
- Use the nylon [tweezers](#) to remove the interconnect pins from each of the circuit boards.

## Step 6 — Battery



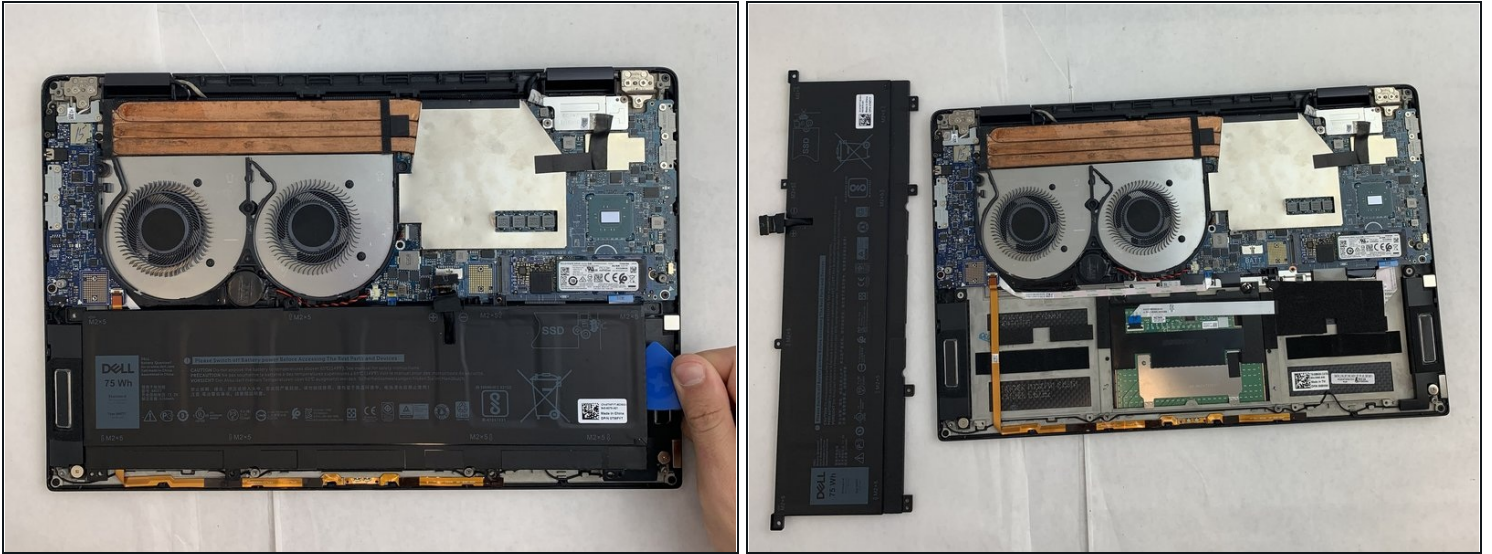
- Use the Phillips #0 screwdriver to remove all eight 6.4mm screws from the battery

## Step 7



- Use a plastic opening pick to pry the black battery cable away from its silver adapter.
- ① Hold the pick at 35 degrees from the computer and push towards the battery to remove the cable from its socket.
- ⚠ Do not push straight into the battery cable as this could damage the adapter.
- ① When you disconnect connectors like these, be careful not to dislodge the small surface-mounted components surrounding the socket.

## Step 8



- Use a plastic opening pick to separate the battery from the device.
  - Lift the battery straight up and remove it when it is completely separated.
- 

To reassemble your device, follow these instructions in reverse order.

Take your e-waste to an [R2 or e-Stewards certified recycler](#).

Repair didn't go as planned? Try some [basic troubleshooting](#), or ask our [Answers community](#) for help.