



Lenovo IdeaPad S210 Touch Wi-Fi Network Card Replacement

Replacing the Wi-Fi card may fix dropping Wi-Fi...

Written By: Zack Colman



INTRODUCTION

Replacing the Wi-Fi card may fix dropping Wi-Fi connections. Replacement may be necessary to regain complete Wi-Fi functionality.

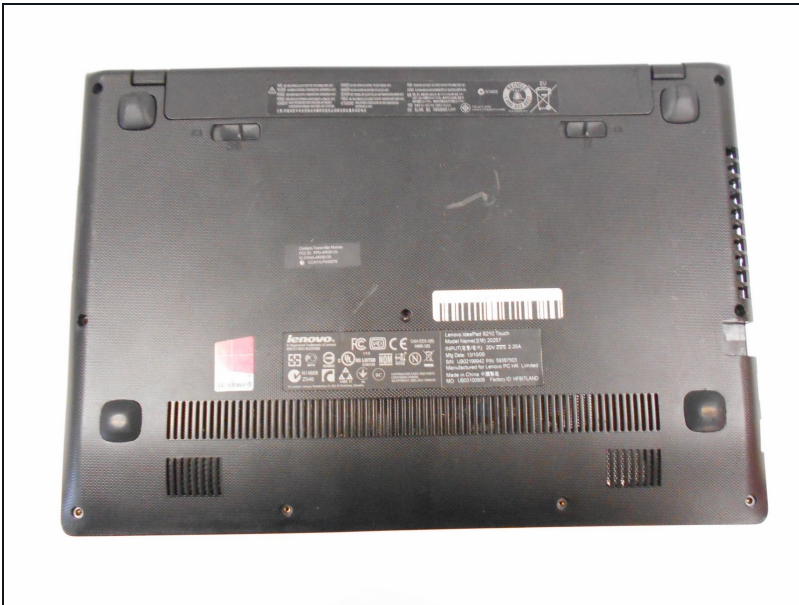
TOOLS:


[iFixit Opening Tool](#) (1)

[Phillips #0 Screwdriver](#) (1)

[Phillips #00 Screwdriver](#) (1)

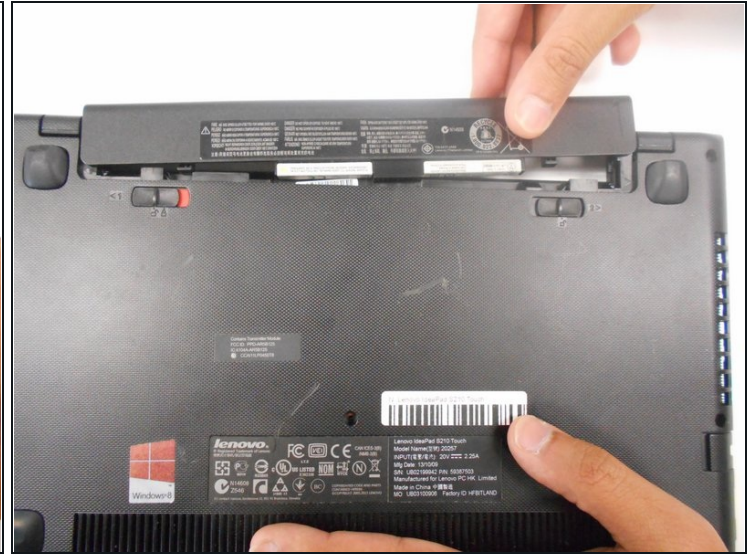
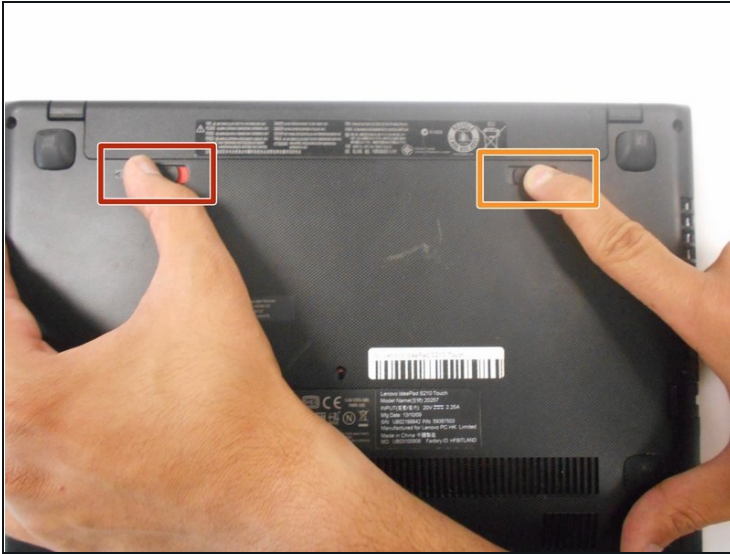
Step 1 — Battery



 Ensure your device is **unplugged** and **shut down**.

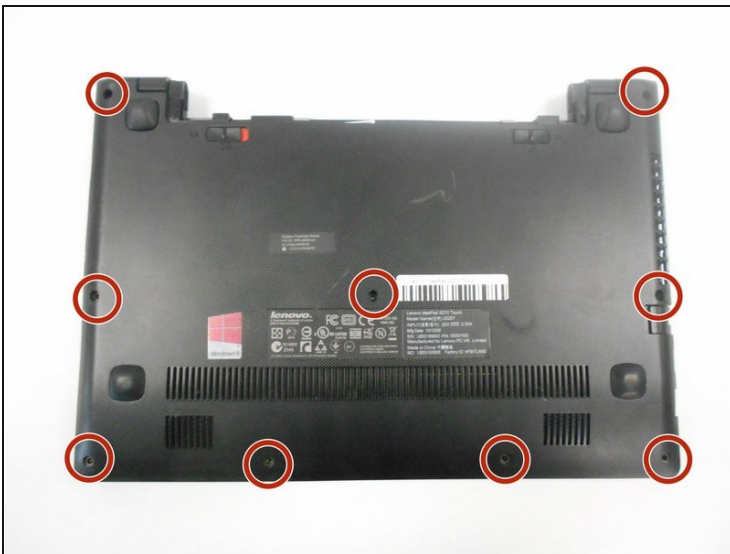
- Place the laptop down with the cooling vents facing upwards.

Step 2



- Use your finger to slide the latch towards the unlocked position (away from the other latch). If done correctly you will see red.
- Slide the second latch to the unlocked position while gently pulling the battery away from the laptop.

Step 3 — Back Panel



- Using the #0 Phillips screwdriver, remove the nine 4mm screws on the back panel.

Step 4



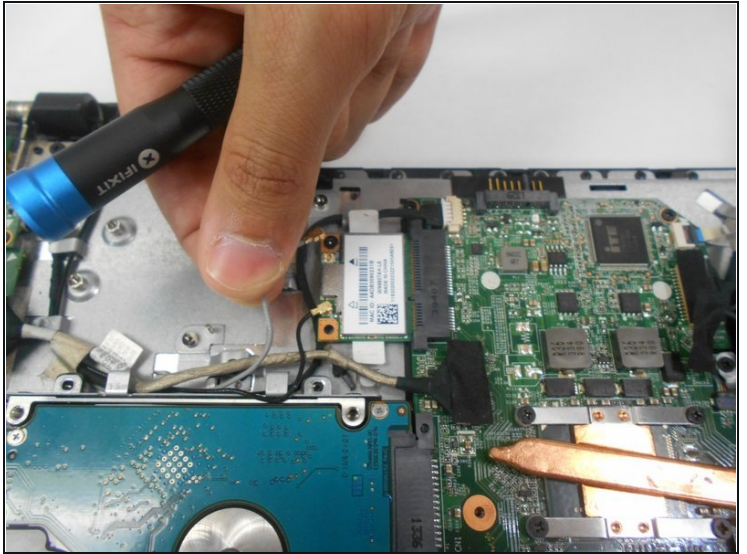
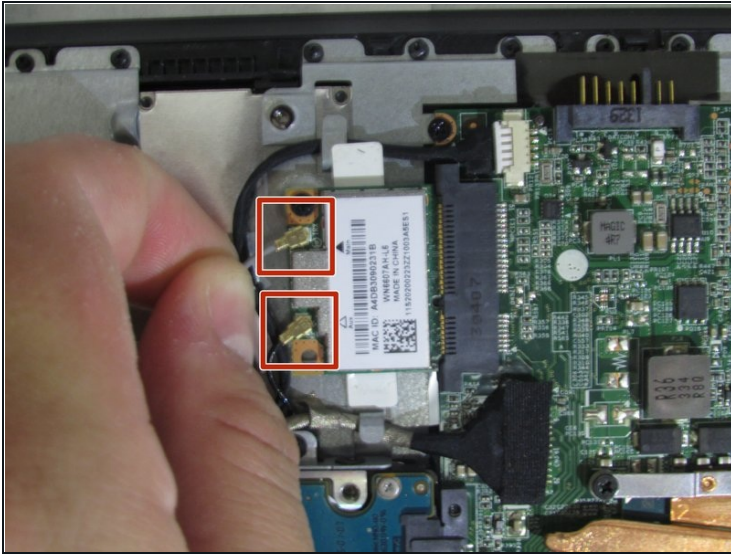
- Gently pull the two rubber feet closest to battery away from the device. Using a #0 Phillips screwdriver, remove the 5mm screw under each rubber foot.

Step 5



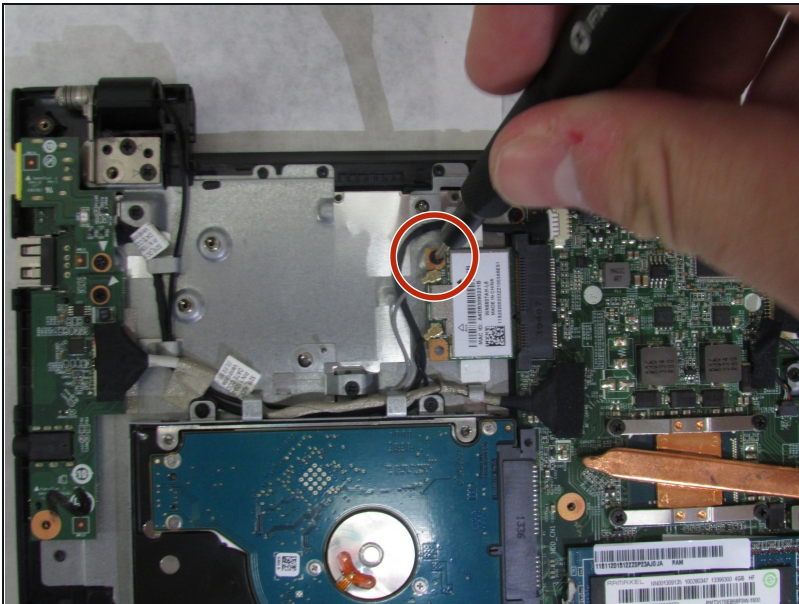
- Slowly begin working your plastic opening tool along the panel to undo the latches around the laptop.

Step 6 — Wi-Fi Network Card



- Remove both antenna wires by pulling upwards gently.

Step 7



- Using the #00 Phillips screwdriver, remove one 3mm screw from the network card.

Step 8



- Slide Wi-Fi network card away from motherboard and remove gently.

To reassemble your device, follow these instructions in reverse order.