



Lenovo IdeaPad S210 Touch System Memory / RAM Replacement

This guide will teach you how to change the system memory in the Lenovo IdeaPad S210 Touch.

Written By: Zack Colman



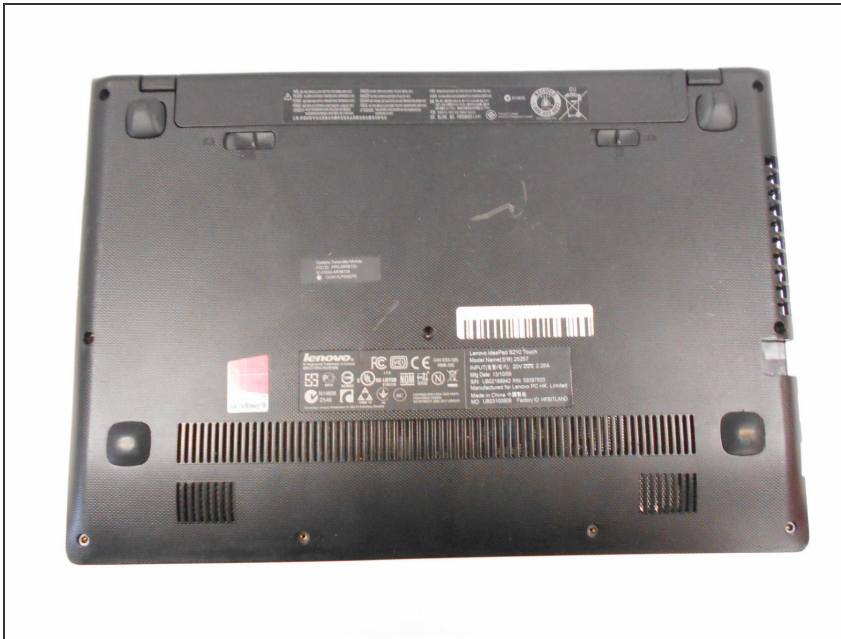
INTRODUCTION

This guide will explain how to replace your System Memory (also known as RAM). Faulty RAM modules may cause reduced system stability and performance.

TOOLS:

- [Phillips #00 Screwdriver](#) (1)
 - [iFixit Opening Tools](#) (1)
 - [Phillips #0 Screwdriver](#) (1)
-

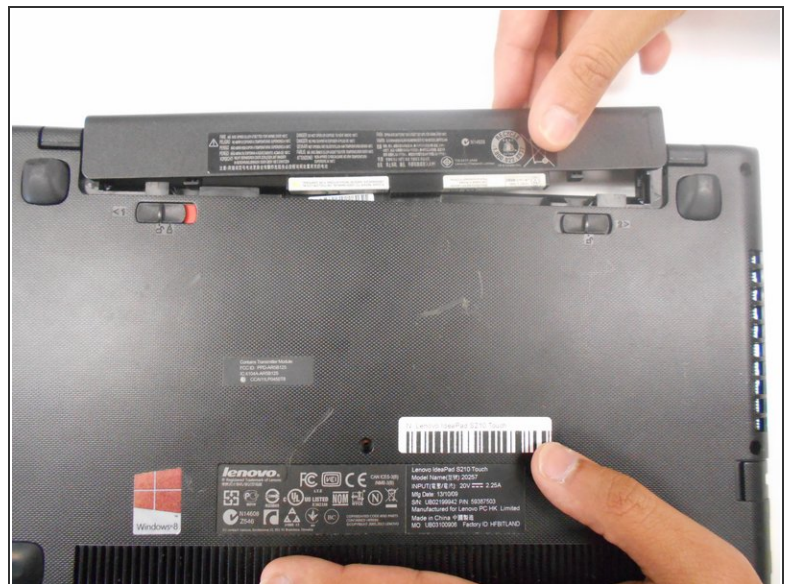
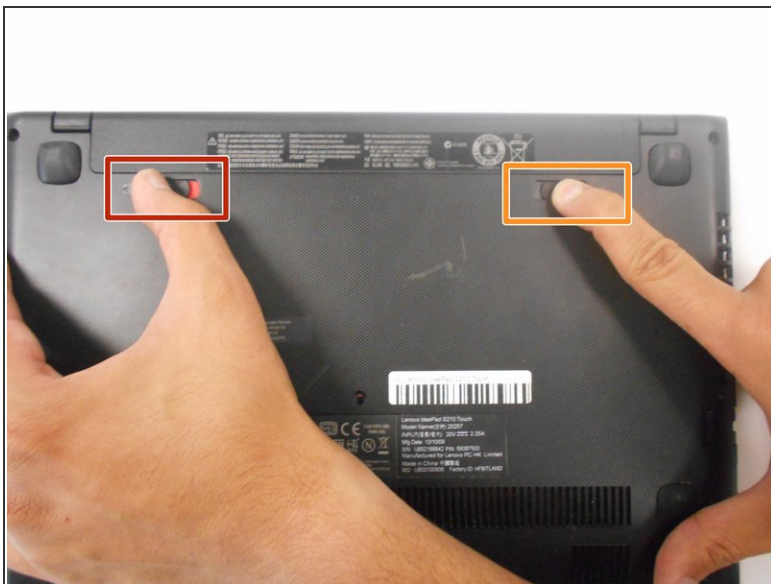
Step 1 — Battery



⚠ Ensure your device is **unplugged** and **shut down**.

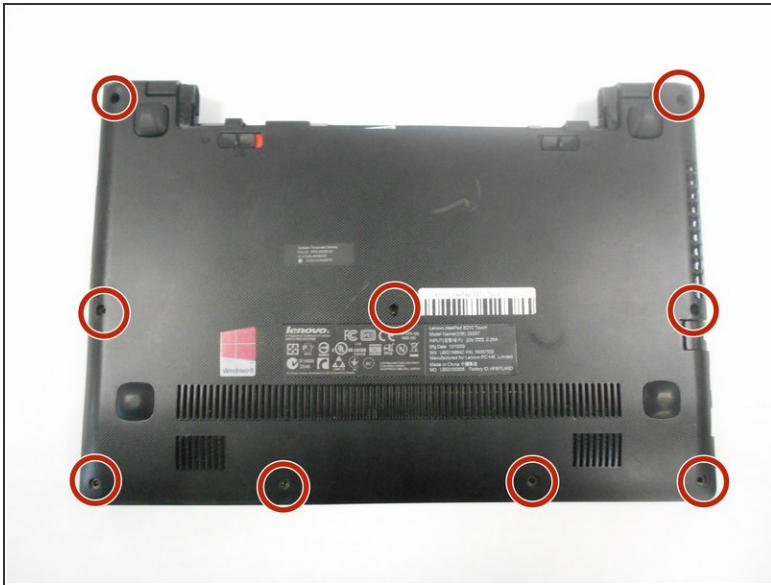
- Place the laptop down with the cooling vents facing upwards.

Step 2



- Use your finger to slide the latch towards the unlocked position (away from the other latch). If done correctly you will see red.
- Slide the second latch to the unlocked position while gently pulling the battery away from the laptop.

Step 3 — Back Panel



- Using the #0 Phillips screwdriver, remove the nine 4mm screws on the back panel.

Step 4



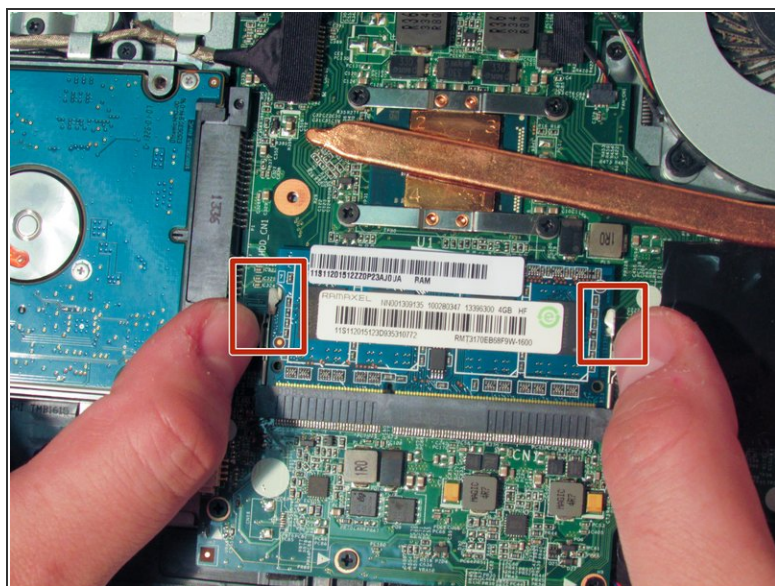
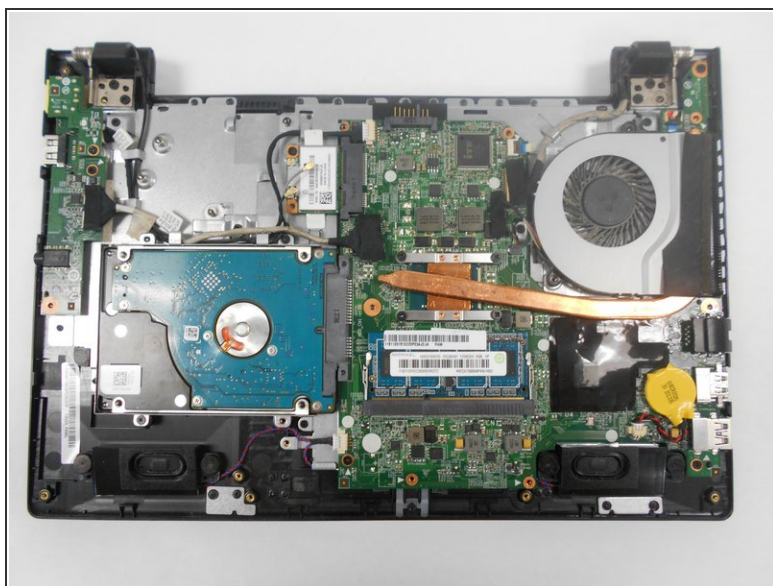
- Gently pull the two rubber feet closest to battery away from the device. Using a #0 Phillips screwdriver, remove the 5mm screw under each rubber foot.

Step 5



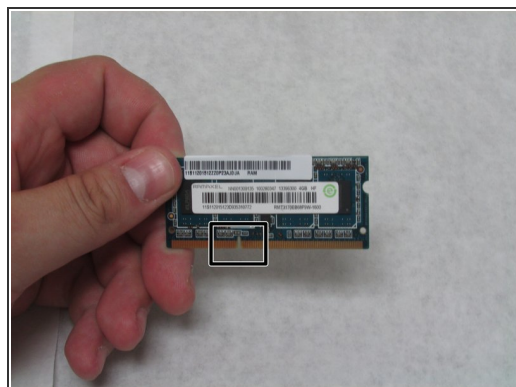
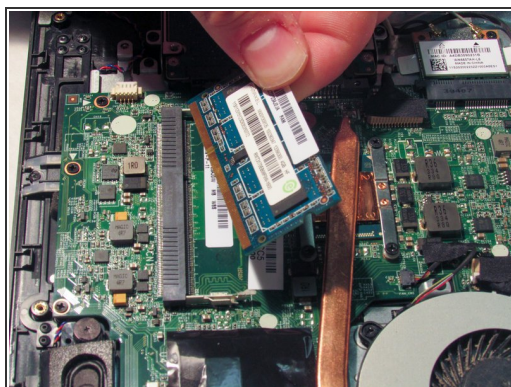
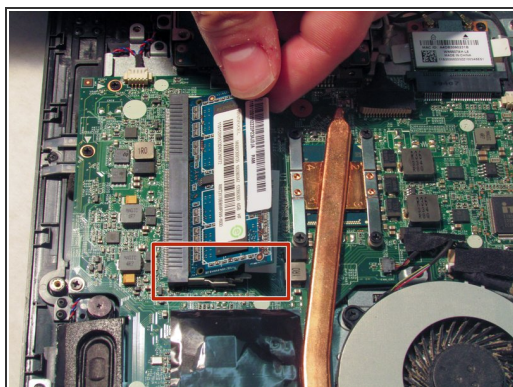
- Slowly begin working your plastic opening tool along the panel to undo the latches around the laptop.

Step 6 — System Memory / RAM




- Release the RAM from the motherboard by pressing the two locking latches away from each other.

Step 7



- After the latches are unlocked, the RAM module will shift so it sits at an angle. Gently pull RAM module at this angle to free it from the socket.

 When reinstalling, be sure to align the notch on the RAM stick with the slot on your motherboard. Improper installation may cause damage to the motherboard or RAM.

To reassemble your device, follow these instructions in reverse order.