



Lenovo IdeaPad S210 Touch Battery Replacement

This guide will show you how to replace the...

Written By: Zack Colman



INTRODUCTION

This guide will show you how to replace the battery in your Lenovo IdeaPad S210 Touch. Power down your device before beginning the process.

If your laptop no longer seems capable of holding a charge, or won't turn on at all, the battery probably needs to be replaced. Replacing the battery may also fix some common problems such as overheating or a shortened battery life.

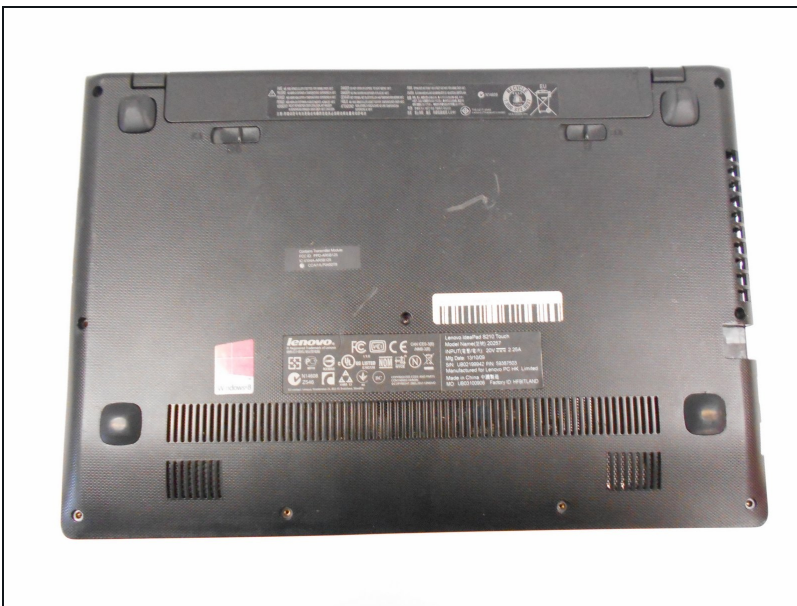
After enduring countless charging cycles, batteries inevitably begin to drain at a faster rate. If you start consistently noticing a rapid decrease in the lifespan of your laptop battery, be sure to calibrate the battery. If the problem persists, replace the battery.


Please be aware that a punctured battery can cause a dangerous fire. If your battery is swollen, take appropriate precautions.

PARTS:

- [121500169 - Lenovo IdeaPad Battery](#) (1)
 - [121500170 - Lenovo IdeaPad Battery](#) (1)
 - [121500185 - Lenovo IdeaPad Battery](#) (1)
 - [121500187 - Lenovo IdeaPad Battery](#) (1)
 - [121500188 - Lenovo IdeaPad Battery](#) (1)
 - [121500189 - Lenovo IdeaPad Battery](#) (1)
-

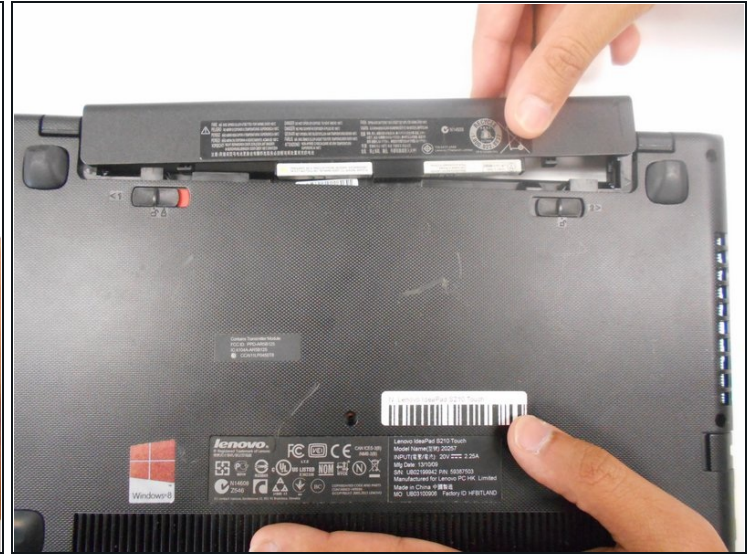
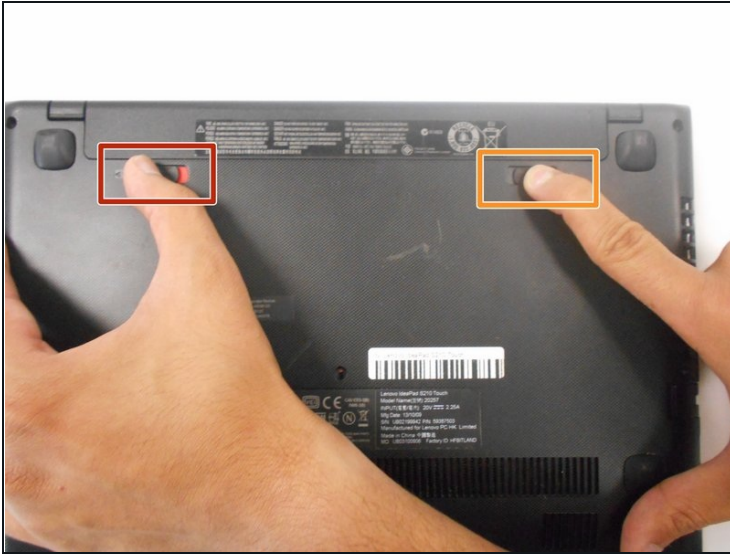
Step 1 — Battery



 **Ensure your device is unplugged and shut down.**

- Place the laptop down with the cooling vents facing upwards.

Step 2



- Use your finger to slide the latch towards the unlocked position (away from the other latch). If done correctly you will see red.
- Slide the second latch to the unlocked position while gently pulling the battery away from the laptop.

To reassemble your device, follow these instructions in reverse order.