



Jura Capresso IMPRESSA J5 grindstones replacement

If your machine only produces thin and weak...

Written By: VauWeh



INTRODUCTION

If your machine only produces thin and weak coffee the grinder maybe dull. The grindstones are not sharp enough to mill the coffee beans properly.

TOOLS:

[iFixit Precision 4 mm Screwdriver Oval Drive Bit](#) (1)

[TR10 Torx Security Screwdriver](#) (1)

[Phillips #2 Screwdriver](#) (1)

PARTS:

[Mahlsteine - Grinder burrs](#) (1)

<https://www.juraprofi.de/Jura->

[Ersatzteile/Wartungssets/Reparaturset-Jura-](#)

[Mahlwerk::11076.html](#)

Step 1 — Jura Capresso IMPRESSA J5 opening procedure



 **Unplug the power cord!**

- Remove the water tank and the drip tray. Remove all coffee beans from the storage container.

Step 2



- Flip open the lid of the bean compartment.
- Unscrew the two slotted screws inside the bean compartment. The screws have a rubber washer and will not come out completely.
- Remove the bean compartment.

Step 3



- The top cover is fastened with oval head screws. Unscrew them.
- ⓘ These screws have an oval head that makes them look like rivets (picture 2). You need to use a special bit - [also available at iFixit](#) - for their removal. [Here a DIY guide](#). If the right bit is not available, it could be done with a pair of needle nose pliers. Jura wants to keep us out of our own machines!!!

Step 4



- Also remove the two oval head screws underneath the ground coffee compartment lid.

Step 5



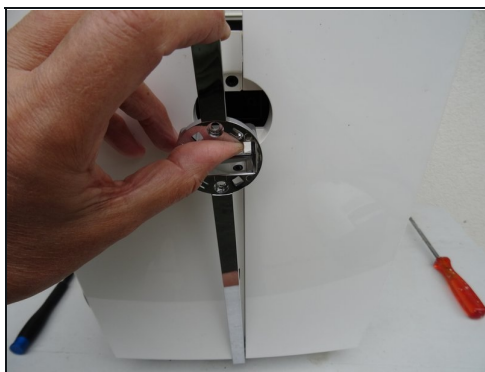
- Now you can pry up the top cover all around.
- Remove the top cover. This often requires a little force.
- ☒ Use plastic tools to avoid scratching your device.

Step 6



- Turn the device with the back facing you.
- Turn the Jura label a few degrees counterclockwise. If it's hard to do, use a small suction cup.
- Remove the Jura label.

Step 7



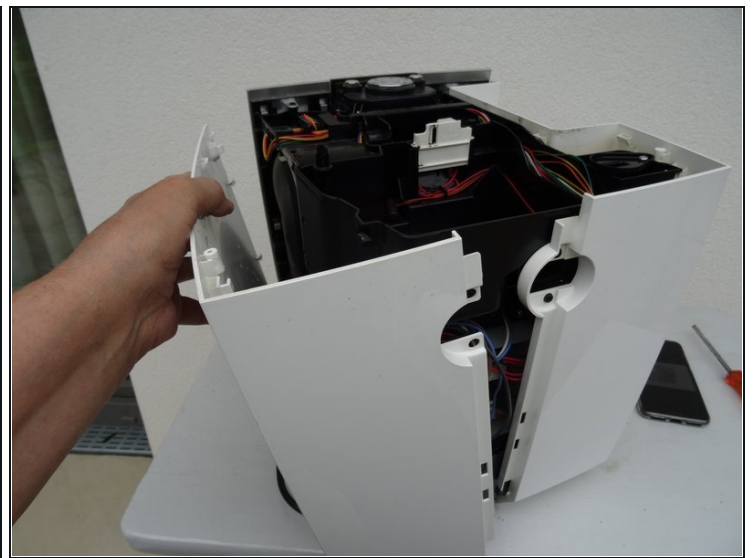
- Underneath the label you will find two Torx T15 screws. Remove them.
- Carefully pull the top of the chrome cover slightly outwards, then push it down and put it aside.

Step 8



- Remove the Torx T15 screw on the side panel with the water tank.

Step 9



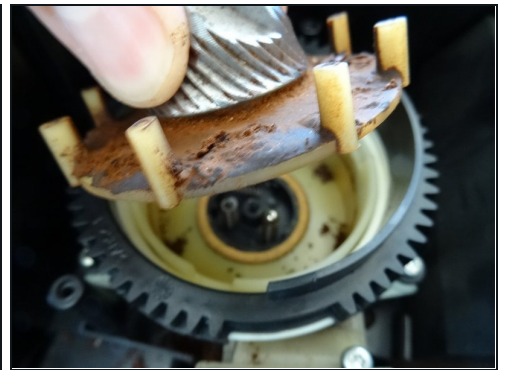
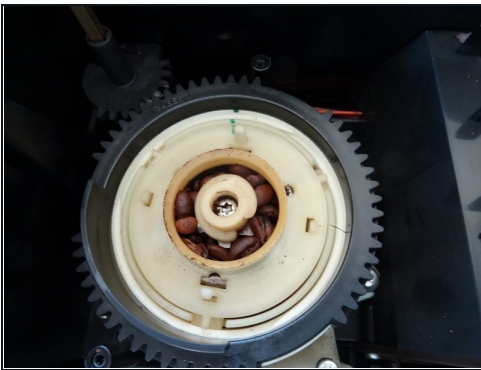
- Pull the right side panel slightly towards the back.
- Remove the side panel.

Step 10



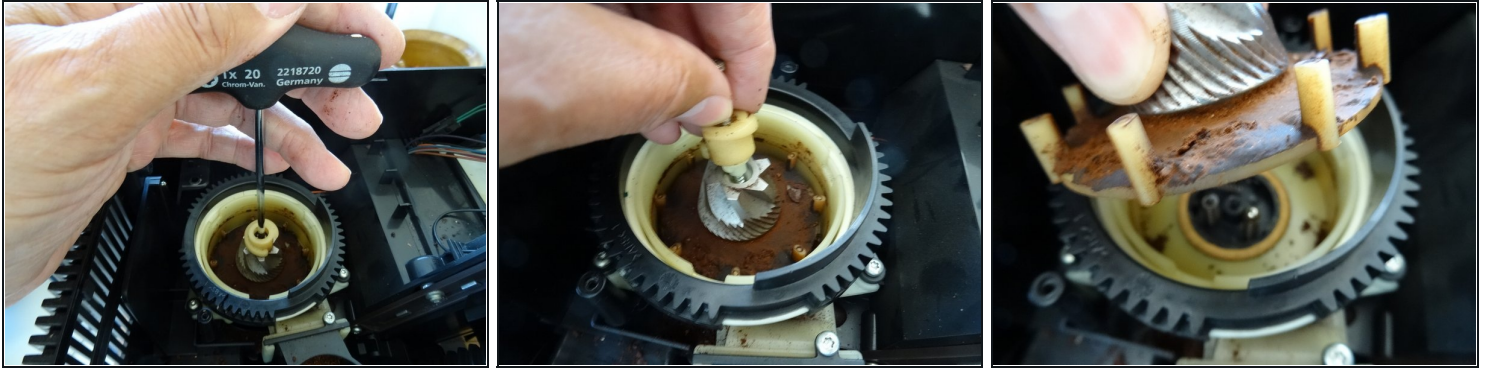
- Pull the left side panel slightly towards the back and remove it.

Step 11 — Removing The Grinder Ring



- Now the grinder is free. Again take a picture, then pull out the axis of the adjuster with moderate force.
- ① This adjuster may not be present on some models.
- Depending on the model you will find a silicon sealing on top of the grinder ring, remove it.
- Watch the fabrication signs , here green. This alignment must be restored later. Now turn the great black gear about 90 degrees counterclockwise. The grinder ring is free and can be lifted off.

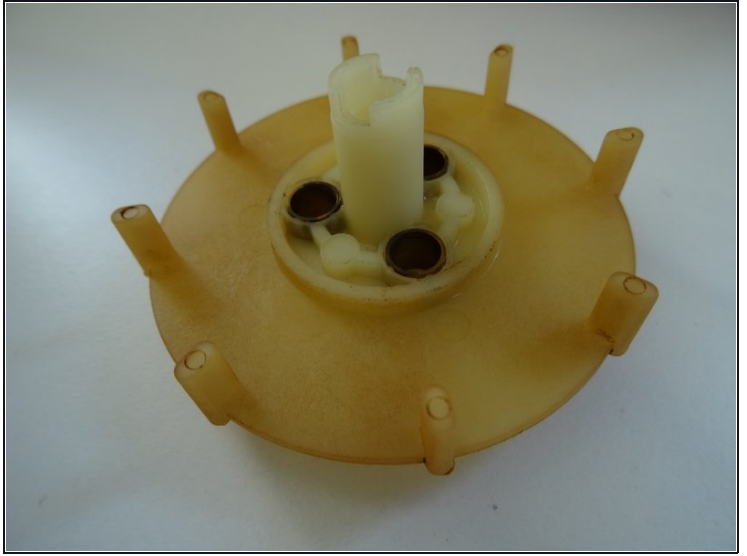
Step 12 — The Grinder Cone



⚠ In the next step be very careful not to loose these three springs, balls and cartridges.

- The grinding cone is fastened with a long Torx T20 screw. The screw head is often covered with remnants of coffee beans. Expose the head and turn the screw out counterclockwise.
- Now the bean feeder (the small white snail) can be removed. The grinder cone and drive can now also be lifted up carefully.

Step 13 — Cleaning



- The grinder is usually filled with old, sticky coffee grounds. Clean everything carefully for an excellent coffee aroma.
- Gently lift the felt ring around the drive shaft with a needle, then wipe it clean with a damp cloth. Do not attempt to wash it, as there is a risk that it will swell. When first used, turn it over with the clean side up.
- Clean the inside of the grinder with a brush and damp cloth, and the blades with a dishwashing brush. Ensure it is properly dried before use.

Step 14 — Change The Grinder Ring



- Push both of the small latches alternately. Then the ring cover should come out.
- Two clamps hold the grinder ring in its place, push them aside and it should come free.
- Again clean everything. Press the new ring and cover in its place. With that the grinder ring is exchanged.

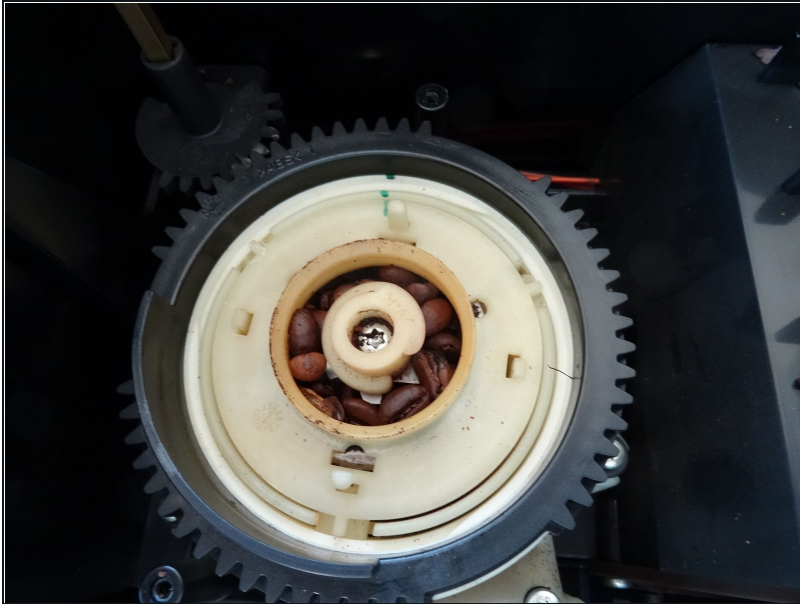
Step 15 — Change The Grinder Cone



- First insert the cleaned driver, then the three sleeves, springs and balls. Now fit the grinding cone on the three balls.
- Then fit the auger, screw in central screws. When screwing in, push the cone downwards and make sure that everything meshes.

⚠ This screw turns into plastic. If it doesn't fit properly, the thread will be damaged. So first turn the screw counterclockwise until you feel that the first thread is engaged. Then tighten it turning clockwise.

Step 16 — Reassembling



- Insert grinding ring. The black gear is turned to the right again until the three marks are aligned. Then reinstall the adjuster drive shaft as it was originally.
- ① The adjustment of the new grinder burrs must not necessarily be the same as the old ones. You can approximately find the mean position, which was marked before, by turning the outer ring as far as possible clockwise, then turning it fourteen clicks backwards.
- ① It is a good idea to check if the grinder rotates freely. You can remove the meal hopper and look at the millstones from the side.
- Then install the remaining parts in reverse order.
- You can set the grinding degree nicely by placing an empty roll of toilet paper perpendicular to the open mill and filling it with a few coffee beans. Plug in the plug (be careful!), choose a cup of coffee and watch as the coffee grounds fall out of the grinder.

Step 17 — Before - After



- These two pictures are no fake: Before repairing the grinder the coffee is thin and transparent. With new stones the coffee is strong and has a fine crema. The repair was a real success!

To reassemble your device, follow these instructions in reverse order.