



Jura Capresso IMPRESSA J5 opening procedure

Instructions on how to open a Jura Impressa J5 coffee machine

Written By: VauWeh



INTRODUCTION

Follow this guide to open the casing of a Jura J5.



TOOLS:

- [Oval Drive Bit](#) (1)
 - [T15 Torx Screwdriver](#) (1)
 - [iFixit Opening Tool](#) (1)
-

Step 1 — Jura Capresso IMPRESSA J5 opening procedure



 **Unplug the power cord!**

- Remove the water tank and the drip tray. Remove all coffee beans from the storage container.

Step 2



- Flip open the lid of the bean compartment.
- Unscrew the two slotted screws inside the bean compartment. The screws have a rubber washer and will not come out completely.
- Remove the bean compartment.

Step 3



- The top cover is fastened with oval head screws. Unscrew them.
- i** These screws have an oval head that makes them look like rivets (picture 2). You need to use a special bit - [also available at iFixit](#) - for their removal. [Here a DIY guide](#). If the right bit is not available, it could be done with a pair of needle nose pliers. Jura wants to keep us out of our own machines!!!

Step 4



- Also remove the two oval head screws underneath the ground coffee compartment lid.

Step 5



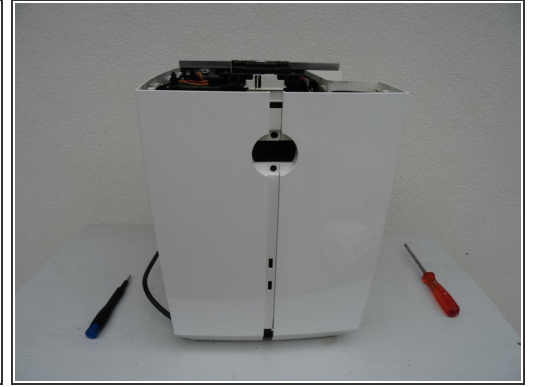
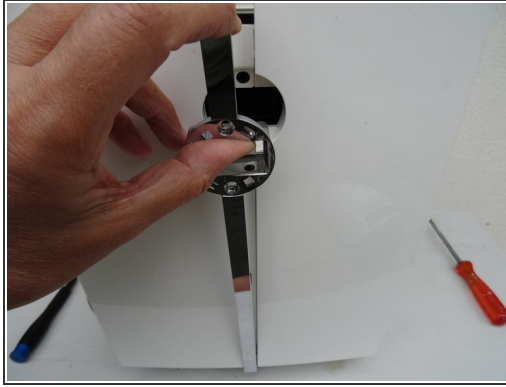
- Now you can pry up the top cover all around.
- Remove the top cover. This often requires a little force.
- ☑ Use plastic tools to avoid scratching your device.

Step 6



- Turn the device with the back facing you.
- Turn the Jura label a few degrees counterclockwise. If it's hard to do, use a small suction cup.
- Remove the Jura label.

Step 7



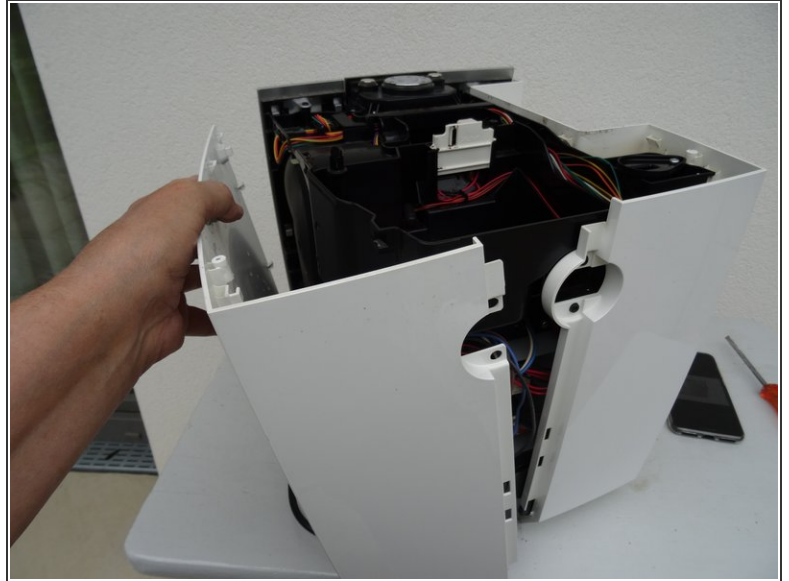
- Underneath the label you will find two Torx T15 screws. Remove them.
- Carefully pull the top of the chrome cover slightly outwards, then push it down and put it aside.

Step 8



- Remove the Torx T15 screw on the side panel with the water tank.

Step 9



- Pull the right side panel slightly towards the back.
- Remove the side panel.

Step 10



- Pull the left side panel slightly towards the back and remove it.

Follow the steps in reverse order to reassemble your device.