



Gardena EasyCut 9823 disassembly of lower part

Written By: Bossard Nicolas





TOOLS:

Clé torx 20 (1)

Fer à souder (1)

étain (1)

scotch électrique (1)

Step 1 — Gardena EasyCut 9823 disassembly of lower part



- Unscrew the three visible screws, surrounded in red in picture.

Step 2



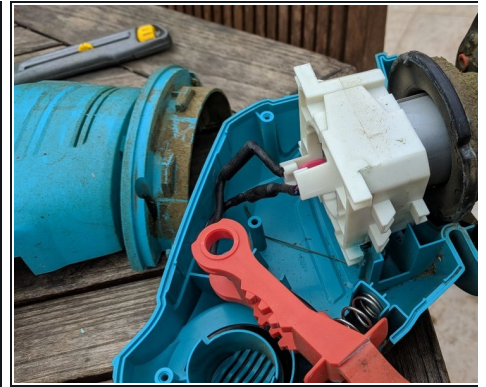
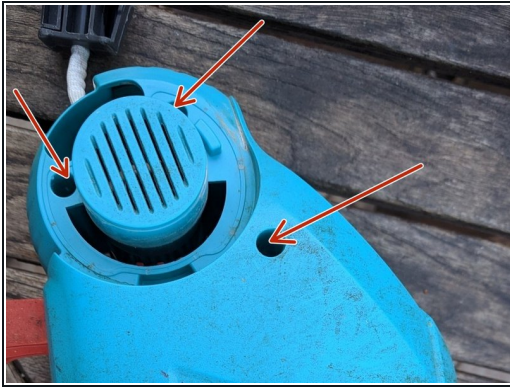
- Remove the two black covers. Frankly, there is no click system.

Step 3



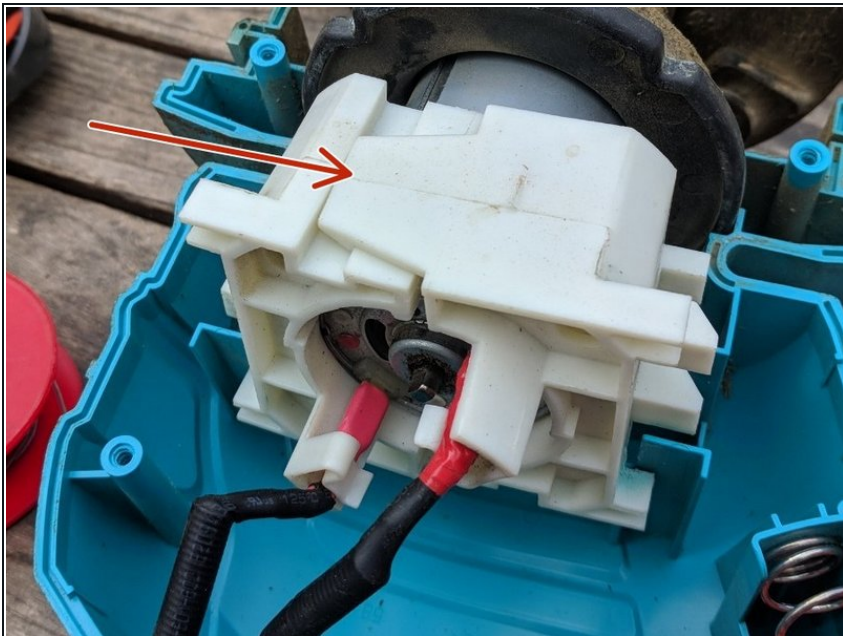
- Remove black protection against grass. Do that by rotating it. Rotation is blocked at two places that you can press with a thin screwdriver.

Step 4



- Remove the 6 screws now visible in the blue part. Open it in two parts.

Step 5



- Pull out white block and engine. Then split white block in two by pulling at the arrow place on provided picture.

Step 6



- Clean, fix and re-protect damaged connector.

In order to reassemble your device, please follow instructions in reverse order.