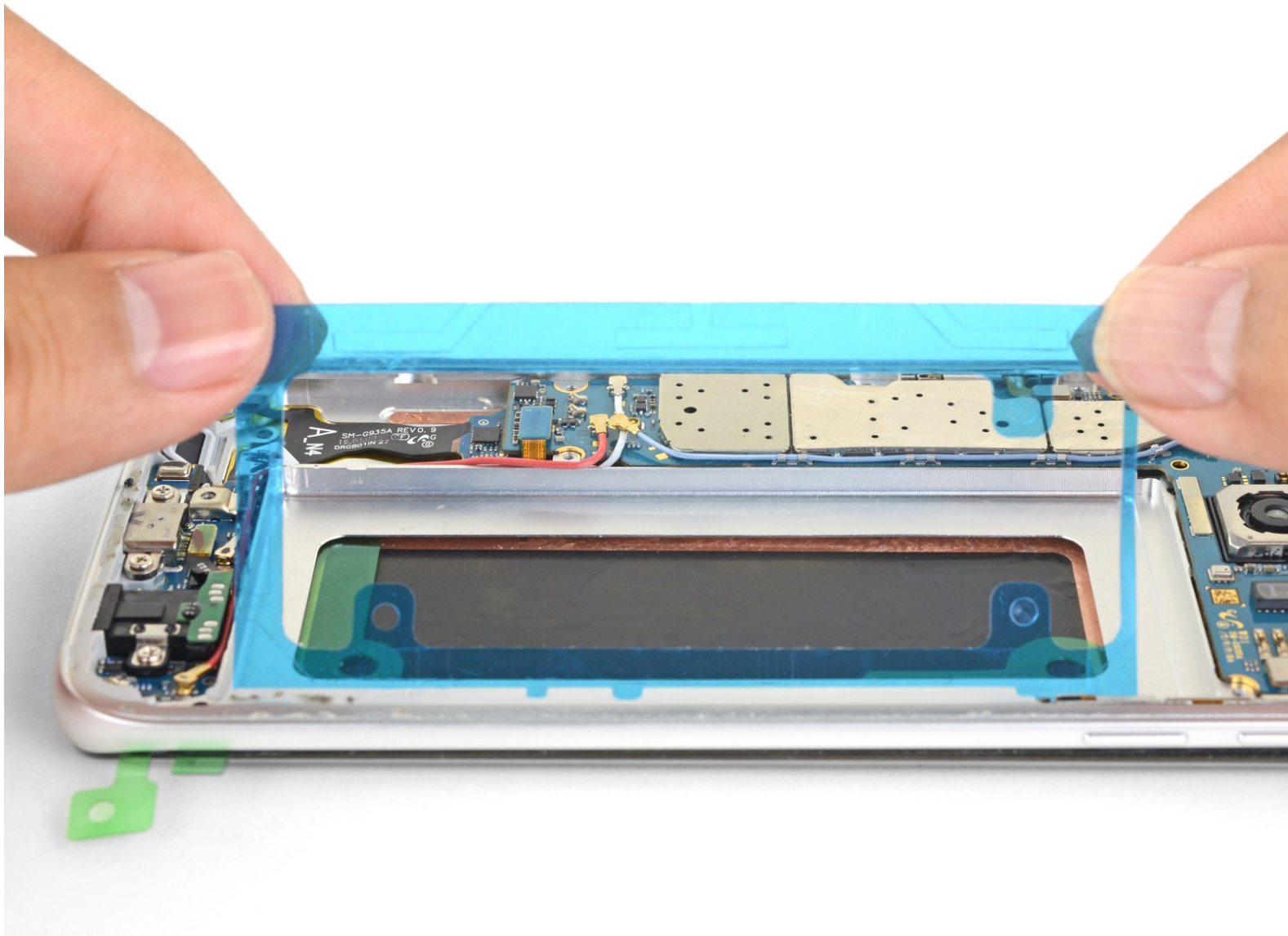




How to Apply Custom-cut Battery Adhesive

This guide shows how to apply custom-cut...

Written By: Arthur Shi



INTRODUCTION

This guide shows how to apply custom-cut battery adhesive when you replace a battery.

The guide uses a Samsung Galaxy phone for demonstration purposes. If you're following this guide for other phones, the adhesives will look slightly different, but the procedure will be the same.

If you are using double-sided tape instead, use this guide as a general guideline for where to apply the tape.



TOOLS:

- [iFixit Opening Tool](#) (1)
- [Tweezers](#) (1)



PARTS:

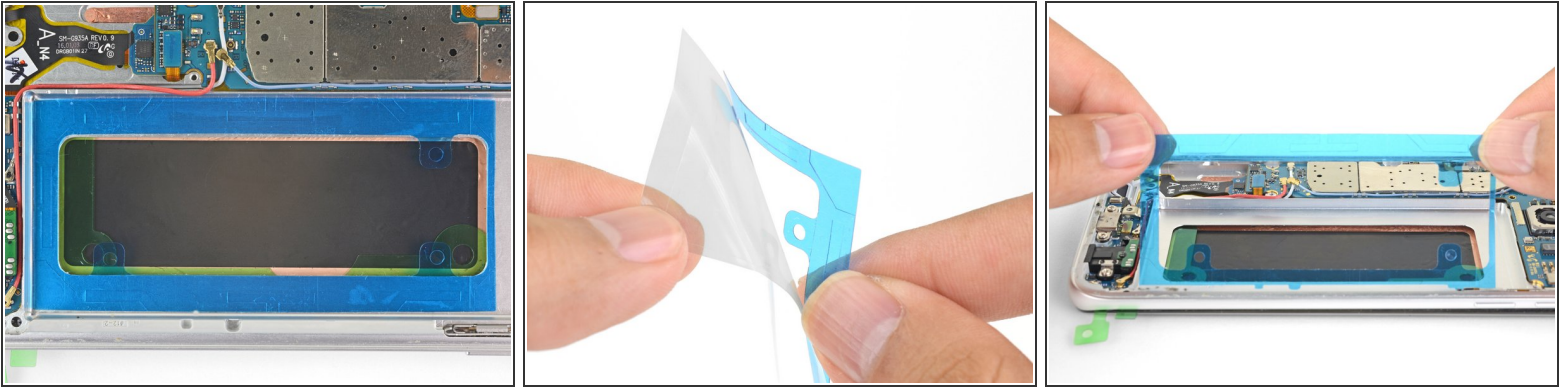
- [Galaxy S7 Edge Battery Adhesive Strips](#) (1)
- [Galaxy S7 Battery Adhesive Strips](#) (1)
- [Galaxy S8 Battery Adhesive Strips](#) (1)
- [Galaxy S8 Plus Battery Adhesive Strips](#) (1)
- [Galaxy S9 Battery Adhesive Strips](#) (1)
- [Galaxy S9 Plus Battery Adhesive Strips](#) (1)

Step 1 — How to Apply Custom-cut Battery Adhesive



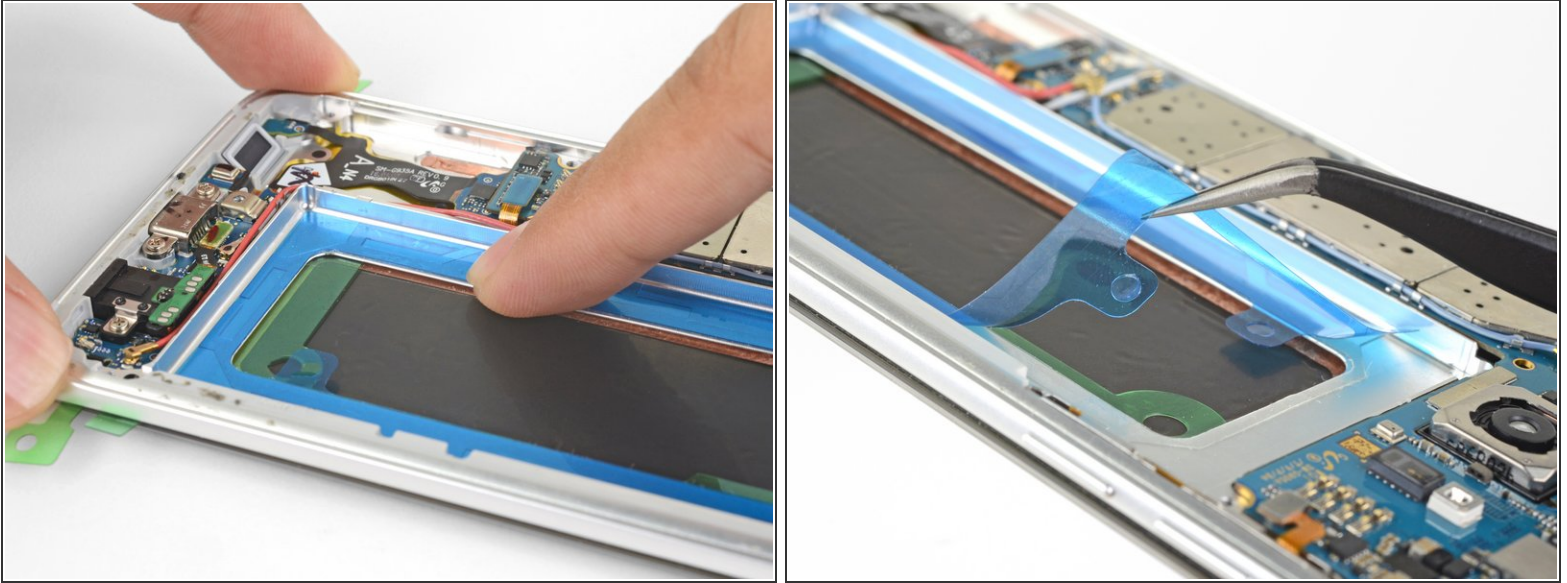
- Remove any remaining adhesive from the phone frame, and clean the glued areas with isopropyl alcohol and a lint-free cloth.

Step 2



- ❗ Before you begin, figure out how the pre-cut adhesive strip should be oriented and which surface to attach it to.
 - If your pre-cut adhesive has pull tabs facing the center hole, the adhesive will attach to the phone's battery well first.
 - If your pre-cut adhesive strip has pull tabs on the outer perimeter, the adhesive will attach to the battery first.
- Peel the **clear plastic liner** off of the pre-cut adhesive strip, exposing the adhesive.
- Line up a long edge of the adhesive with the proper surface, as determined above.
- Carefully set the adhesive down on the surface.
- ❗ The adhesive is very sticky, so you have only one chance to align it.

Step 3



- Once the adhesive is aligned, use your fingers to press the adhesive into place.
- When you are ready to stick the battery onto the frame, carefully peel away the **blue plastic liner** to expose the adhesive.
- Set the battery lightly in place.
- Plug in the battery connector *temporarily* to ensure that the cable reaches the socket.
- Press the battery perimeter firmly with your fingers to help the adhesive bond.
- Disconnect the battery before resuming re-assembly.

For optimal performance, after completing this guide, [calibrate](#) your newly installed battery.