



# Replacement

This guide explains how to remove the hard...

Written By: Pablo Arriola



# INTRODUCTION

This guide explains how to remove the hard drive from the laptop.

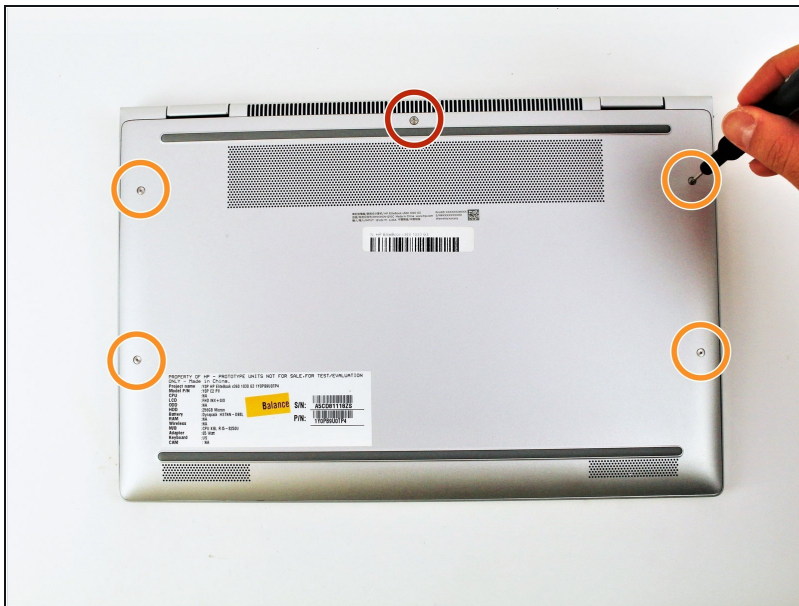
## TOOLS:


T5 Torx Screwdriver (1)  
Phillips #1 Screwdriver (1)

## PARTS:

Crucial P3 NVMe PCIe M.2 2280SS SSD (1)  
Crucial P3 Plus NVMe PCIe M.2 2280SS SSD (1)  
Crucial P5 Plus PCIe M.2 2280SS SSD (1)

## Step 1 — Bottom Cover



 Be sure to power off and unplug your device before you begin your repair.

- Close the laptop and flip it so that the screen is on the surface of the table and the back plate is facing you.
- Remove the 3.3 mm screw near the top of the hinge using a T5 Torx screwdriver.
- Remove the remaining four 7.3 mm screws using the same screwdriver.

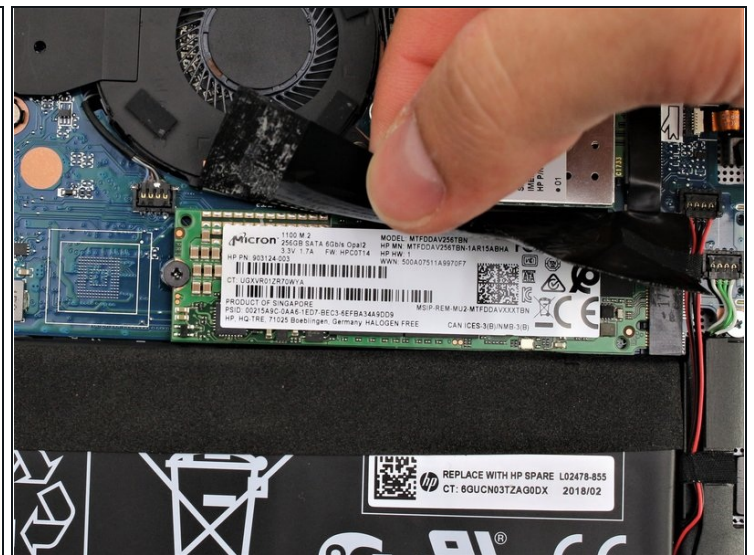
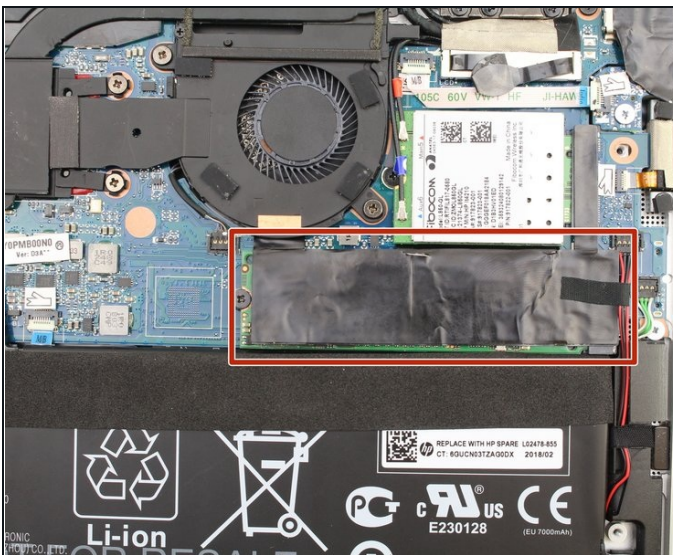
## Step 2



- Separate the bottom cover from the laptop, starting from the upper corner and working your way around the edge.

*ⓘ The plastic fastening may make cracking sounds when separating, but this is normal.*

## Step 3 — Solid State Drive



- Lift the black tape covering the solid state drive.

## Step 4



- Remove the 2.4 mm screw using a Phillips #00 screwdriver.

## Step 5



- Slide the solid state drive to the left and out of its port.

⚠ Be careful when removing the solid state drive as bending any of the pins may render it unusable.

To reassemble your device, follow these instructions in reverse order.