



HP EliteBook x360 1030 G3 Battery Replacement

Use this guide to replace the battery in your HP EliteBook x360 1030 G3.

Written By: Pablo Arriola



INTRODUCTION

If you are having power issues with this device, replacing the battery may be the solution. This guide will show you how to do so.

However, you should check through the [troubleshooting page](#) before proceeding, in case a simpler fix resolves the problem.

For your safety, discharge your battery below 25% before disassembling your device. This reduces the risk of a dangerous thermal event if the battery is accidentally damaged during the repair. If your battery is swollen, [take appropriate precautions](#).



TOOLS:

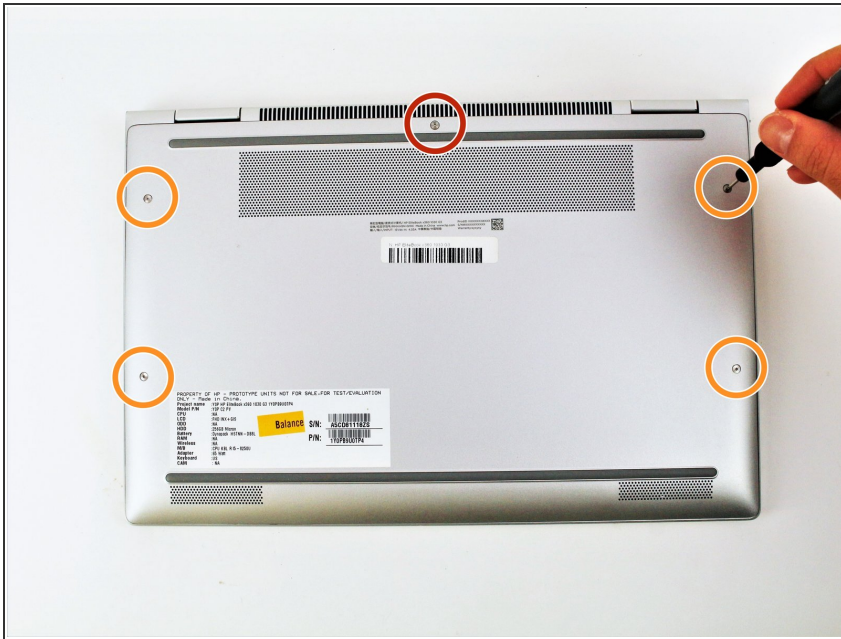
- [Phillips #00 Screwdriver](#) (1)
- [T5 Torx Screwdriver](#) (1)



PARTS:

- [HP EliteBook X360 1030 G3 Replacement Battery](#) (1)

Step 1 — Bottom Cover



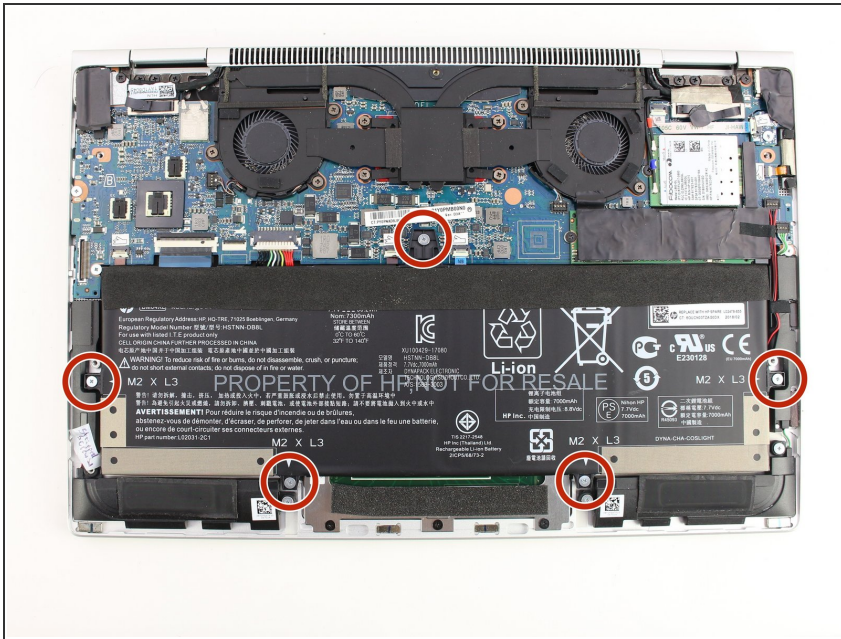
- i Be sure to power off and unplug your device before you begin your repair.
- Close the laptop and flip it so that the screen is on the surface of the table and the back plate is facing you.
- Remove the 3.3 mm screw near the top of the hinge using a T5 Torx screwdriver.
- Remove the remaining four 7.3 mm screws using the same screwdriver.

Step 2



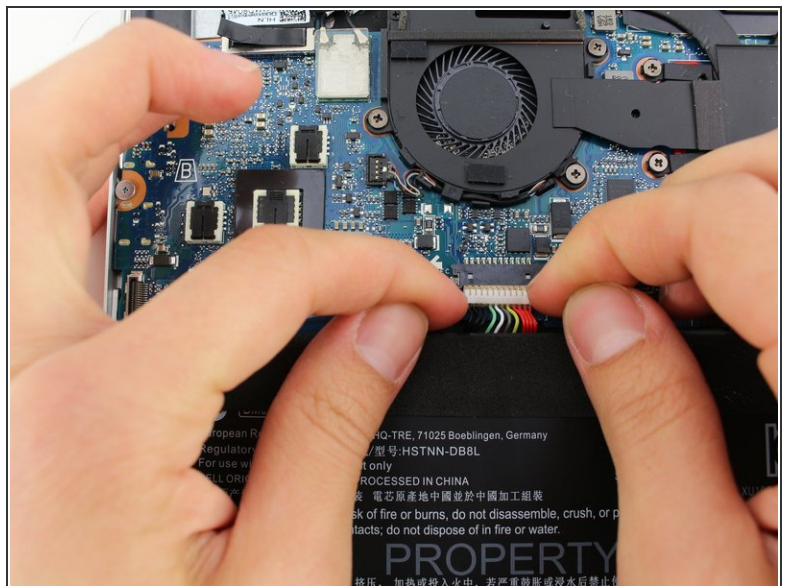
- Separate the bottom cover from the laptop, starting from the upper corner and working your way around the edge.
- i The plastic fastening may make cracking sounds when separating, but this is normal.

Step 3 — Battery



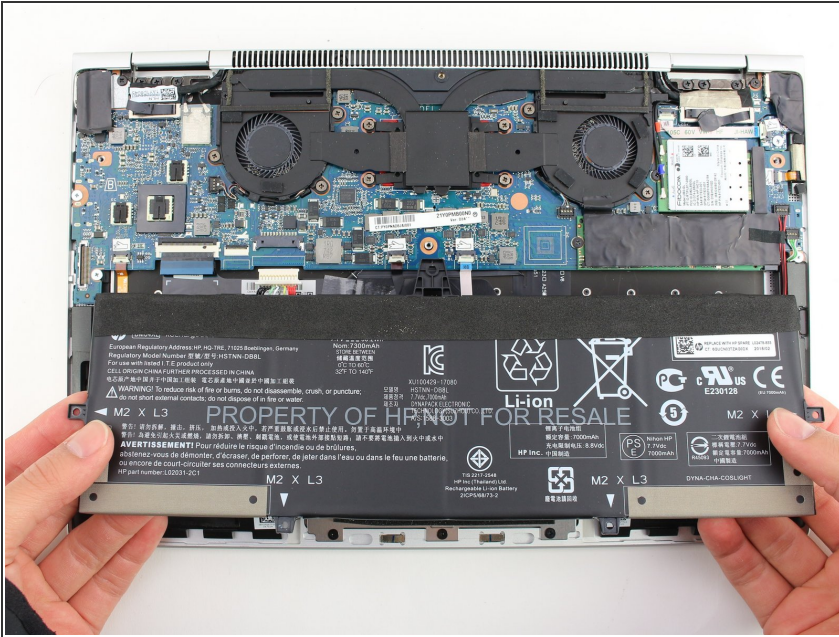
- Remove the five 3.7 mm screws that are holding the battery in place using a Phillips #00 screwdriver.
- ⓘ Be sure to keep the screws organized because they will be reused for the next battery installation.

Step 4



- Carefully pull the white plastic battery connector towards you until it is removed from the port.
- ⚠ Be sure not to pull using the wires; doing so may cause damage.

Step 5



- Gently lift the battery out of its place.

To reassemble your device, follow these instructions in reverse order.

Take your e-waste to an [R2 or e-Stewards certified recycler](#).

Repair didn't go as planned? Try some [basic troubleshooting](#), or ask our [Answers community](#) for help.