



Asus F555LA-AB31 Battery Replacement

How to replace the battery in a Asus F555LA-AB31 laptop.

Written By: JC Chavez



INTRODUCTION

If your Acer Aspire 4741G-332G32Mn is not holding its charge, it probably needs a battery replacement. These instructions will help you to quickly remove the battery with minimal skill or effort.

When a battery is working correctly it should provide the laptop with power for several hours without being plugged into a power source. After several cycles of being charged, the battery will begin to lose the ability to hold a charge. You can check the charging capacity by calibrating your battery. If there is a drop in the battery percentage, you should consider replacing the battery.

Be sure the laptop is powered off before replacing its battery.

Take [appropriate precautions](#) if the battery is swollen. Beware of punctured batteries as they can cause fires.

Please also note that these instructions follow the CD drive removal guide.



TOOLS:

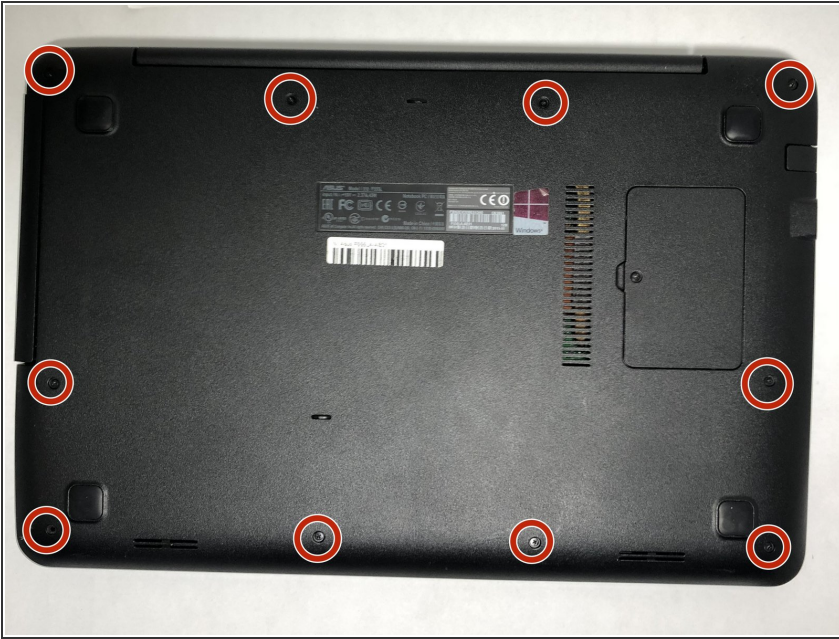
- [Phillips #0 Screwdriver](#) (1)



PARTS:

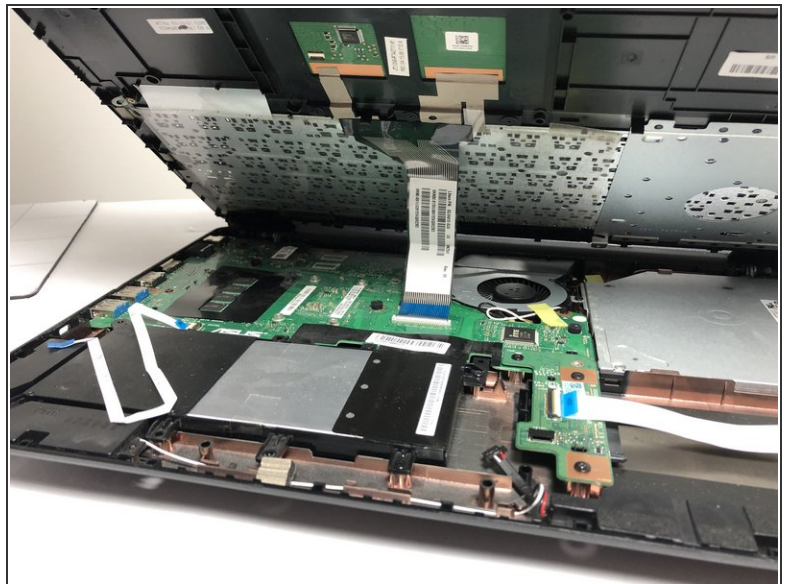
- [Asus C21N1347 Replacement Battery](#) (1)

Step 1 — CD Drive



- ✦ Turn off and unplug the device before starting repairing.
- Use the Phillips #0 screwdriver head to remove the ten 18mm Phillips #0 screws on the laptop's bottom.

Step 2

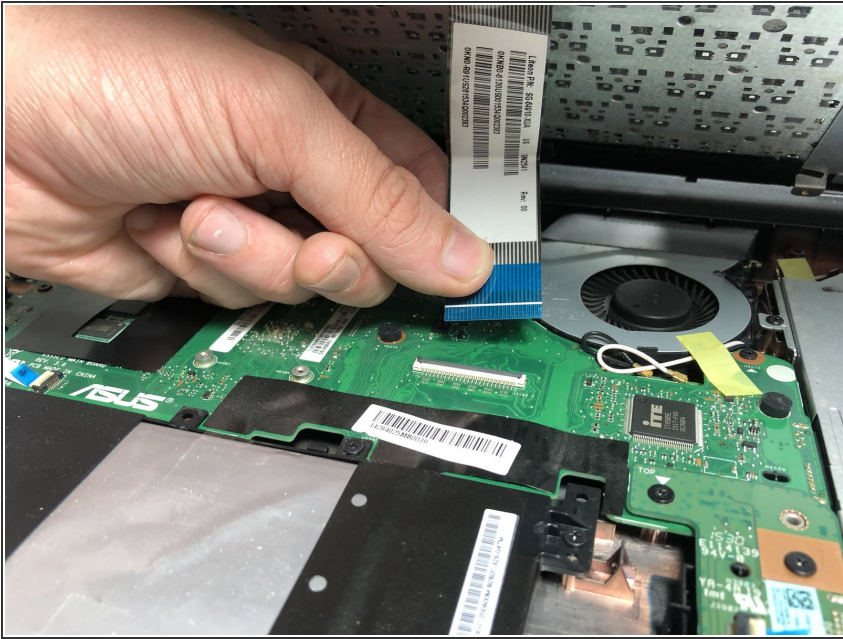


- Flip the laptop over and flip the screen up.
- Pry upward on the edges of the faceplate in order to separate the keyboard and trackpad from the rest of the device.

⚠ Be cautious of the cables connecting the keyboard and trackpad to the motherboard.

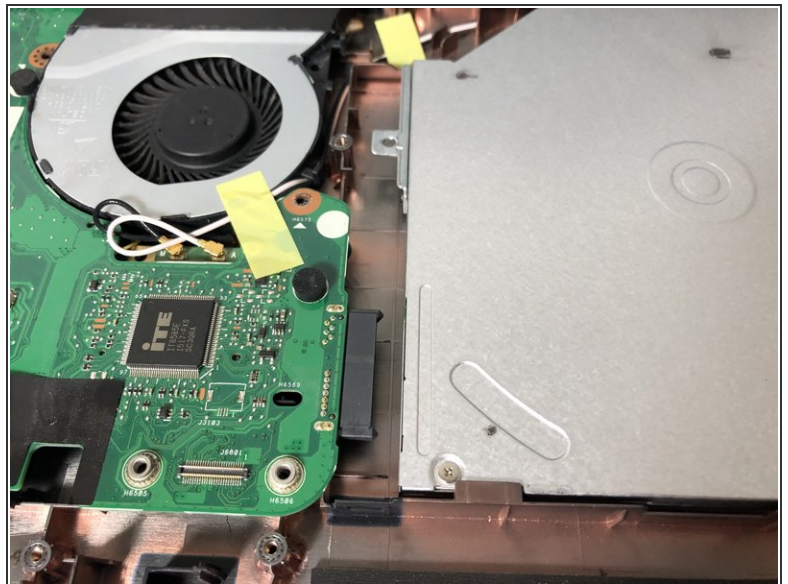
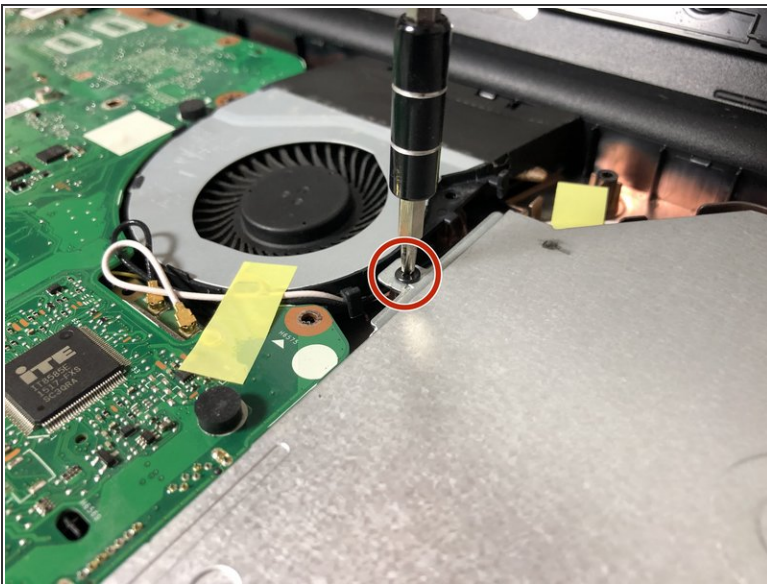
This document was generated on 2022-01-06 04:09:54 PM (MST).

Step 3



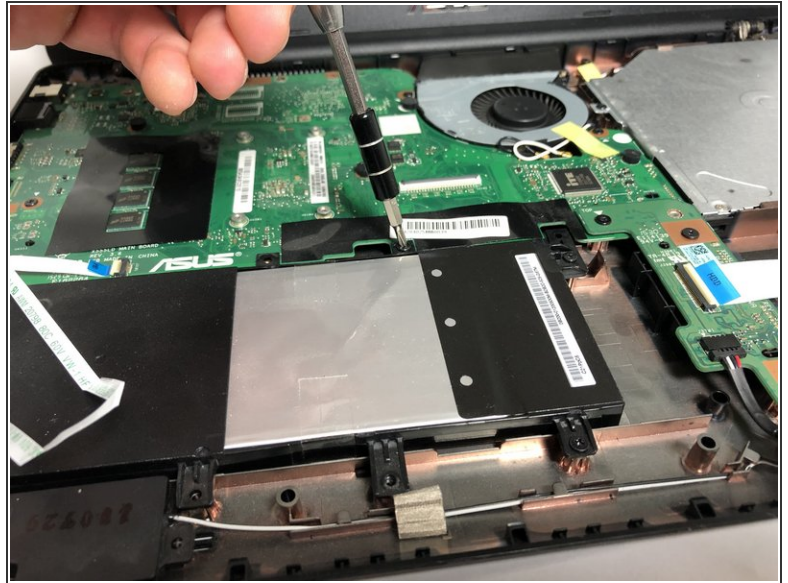
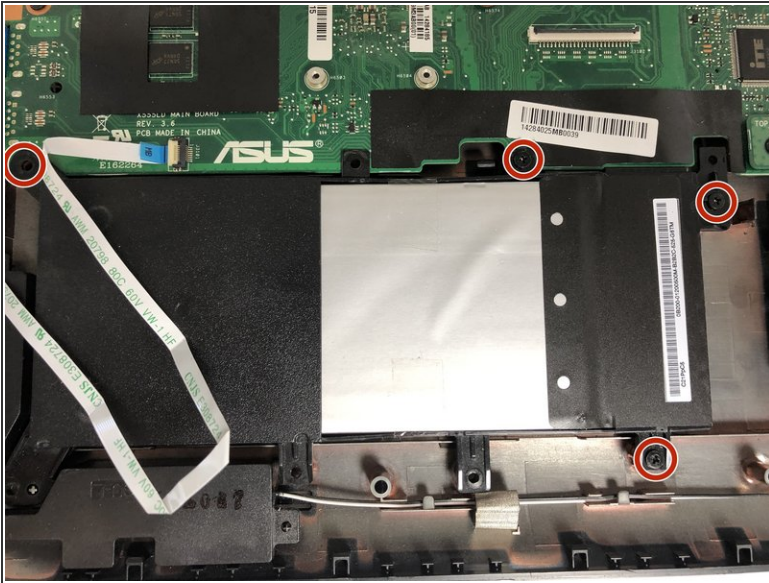
- Disconnect the keyboard flex cable from its motherboard ZIF socket.
- ⓘ To unlock a [ZIF connector](#), use the tip of a spudger or your fingernail to flip up the small, hinged locking flap. Carefully slide the unlocked cable out of the socket.

Step 4



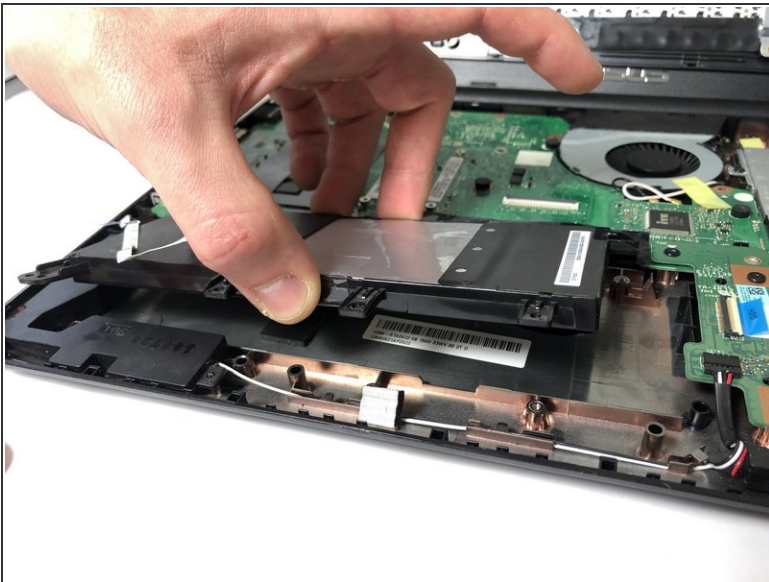
- Use the Phillips #0 screwdriver to unscrew the one Phillips #0 screw that connects the CD drive to the motherboard.
- Slowly slide out the CD drive, keeping it level, to remove it.

Step 5 — Battery



- Remove the four 4 mm Phillips #0 screws securing the battery.

Step 6



- Lift up battery and remove it from the device.

To reassemble your device, follow these instructions in reverse order.

Take your e-waste to an [R2 or e-Stewards certified recycler](#).

Repair didn't go as planned? Try some [basic troubleshooting](#), or ask our [Answers community](#) for help.