



DeWalt DWE4011 Power Cable Replacement

Guide to replacing the power cable for the Dewalt DWE4011 grinder.

Written By: kean colosimo



INTRODUCTION

When replacing electrical components on any device careful consideration must be taken to reduce risk of shock. Be sure the cord is not plugged into a power source before proceeding with this replacement guide. If the cord is cut, this should not be an issue. Reasons you might need follow this guide include: damaged power cord, or the grinder wont turn on.



TOOLS:

- [T15 Torx Screwdriver](#) (1)
 - [Phillips #2 Screwdriver](#) (1)
 - [Spudger](#) (1)
-

Step 1 — Power Cord



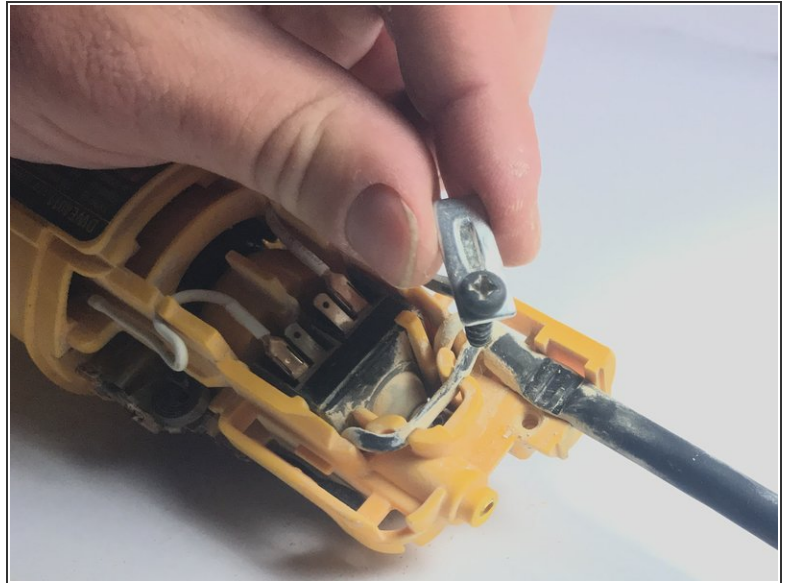
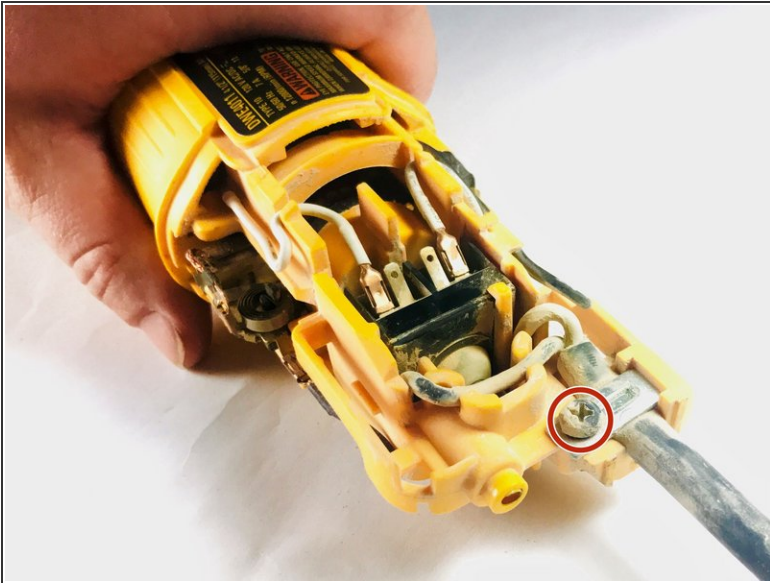
- Turn to the bottom of the device and remove the 5/8" (17mm) T15 Torx screw.

Step 2



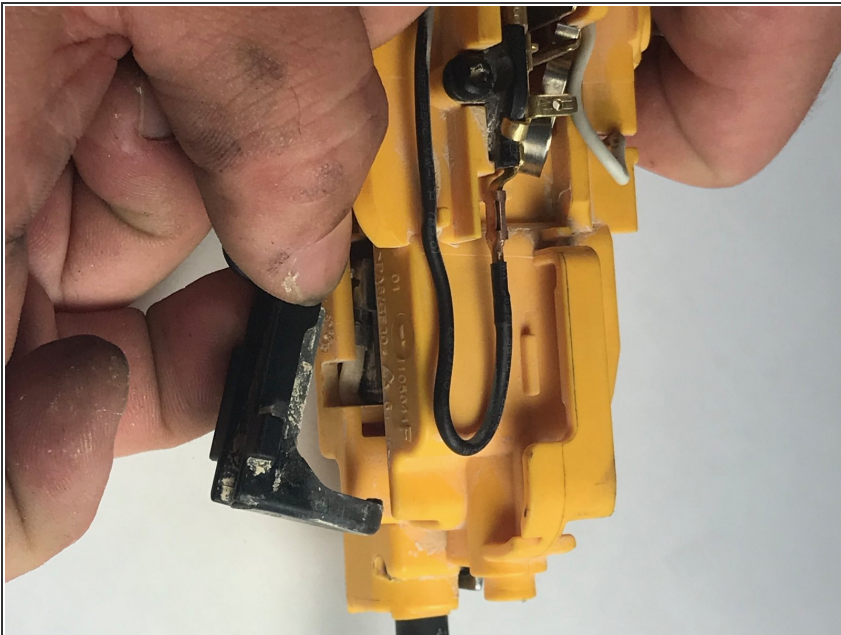
- Remove bottom casing by separating the end handle away from the main casing.

Step 3



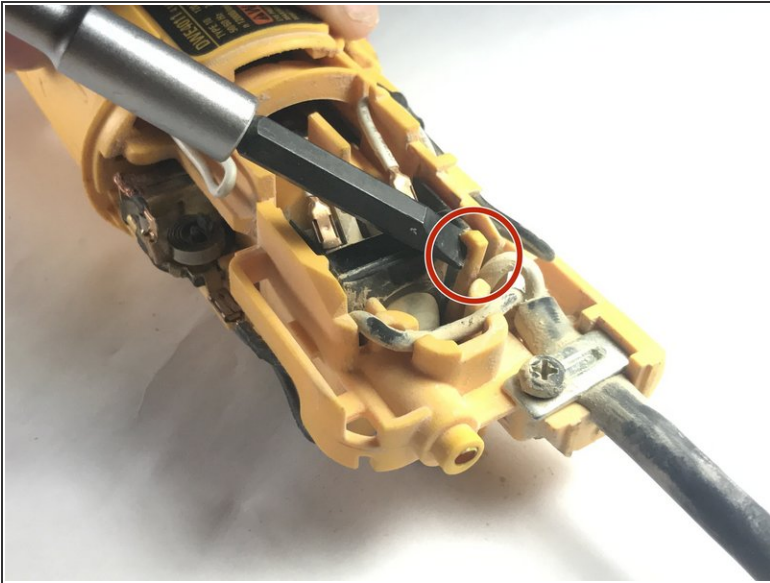
- Remove the 1/2" (13mm) Phillips #2 screw holding the power cable to the device. This will free up the metal clamp holding the cable in place.

Step 4



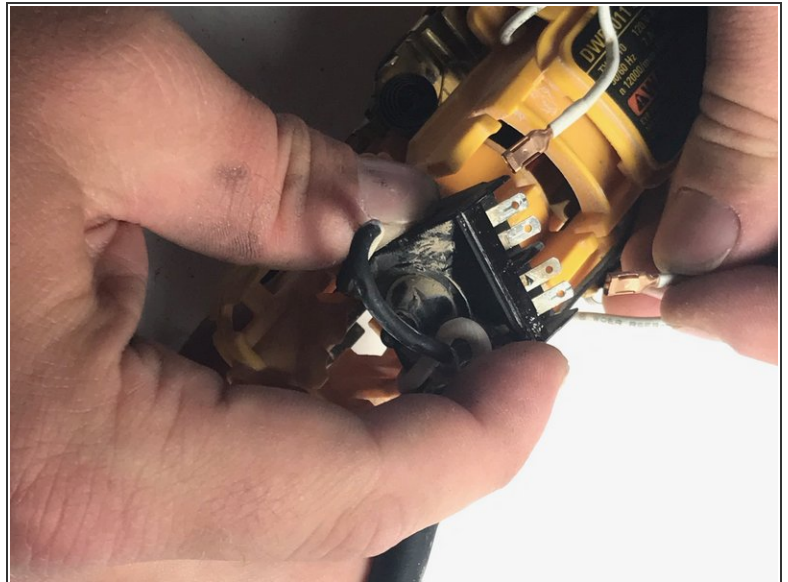
- Flip the grinder over and disconnect the plastic switch mechanism from the cable housing.

Step 5



- Pull back the yellow tab holding the housing in place using a nylon spudger. Carefully pull the housing out of the casing.

Step 6



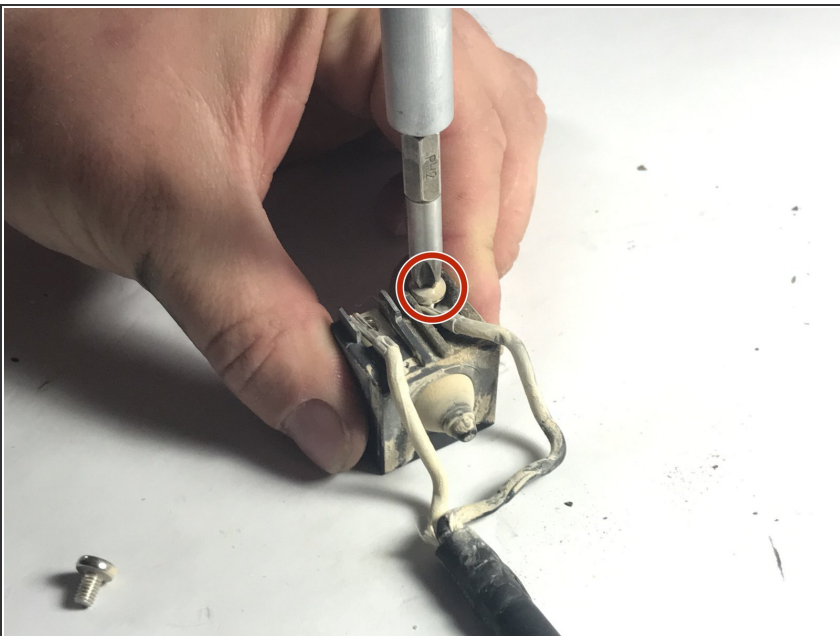
- Locate the terminals with the two white cables attached and disconnect both.
- ☞ These cables are connected to the outer terminals; connect as such during reassembly.

Step 7



- Remove the entirety of the cable housing from the device casing.
- ⓘ The two wires coming from the power cable should still be connected to electrical housing at this point.

Step 8



- Loosen the Phillips #2 screws enough to disconnect the two wires from the power cable housing.
- ⓘ Removing the screw entirely is fine, but unnecessary since the screws are merely clamping down the wires' ends.

To reassemble your device, follow these instructions in reverse order.