



Toshiba Satellite A205-S5812 Hard Drive Replacement

This guide explains how to replace a failed hard disk drive (HDD) in a Toshiba Satellite A205-S5812.

Written By: Kenneth Tynan



INTRODUCTION

If your laptop begins making strange noises, like clicking or humming, has frequent program crashes or disk errors, or is exhibiting overall strange behavior, use this guide to replace your hard drive.



TOOLS:

- [Phillips #00 Screwdriver](#) (1)




PARTS:

- [Toshiba Satellite hard drive](#) (1)

Step 1 — Battery



 Turn off your laptop before beginning.

- Turn the laptop over so the base of the laptop faces the ceiling.

Step 2



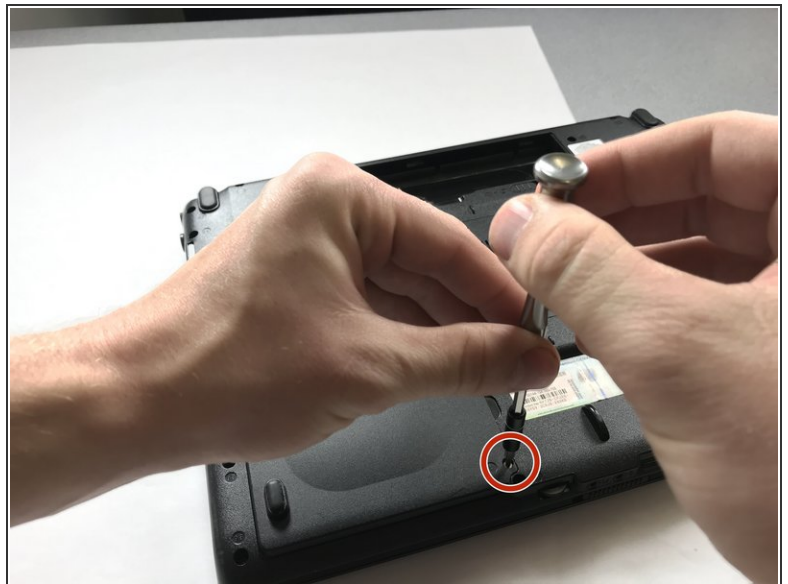
- Push the two plastic tabs retaining the battery into the chassis to each respective side. This will push the battery up slightly and release it from the bottom of the notebook.

Step 3



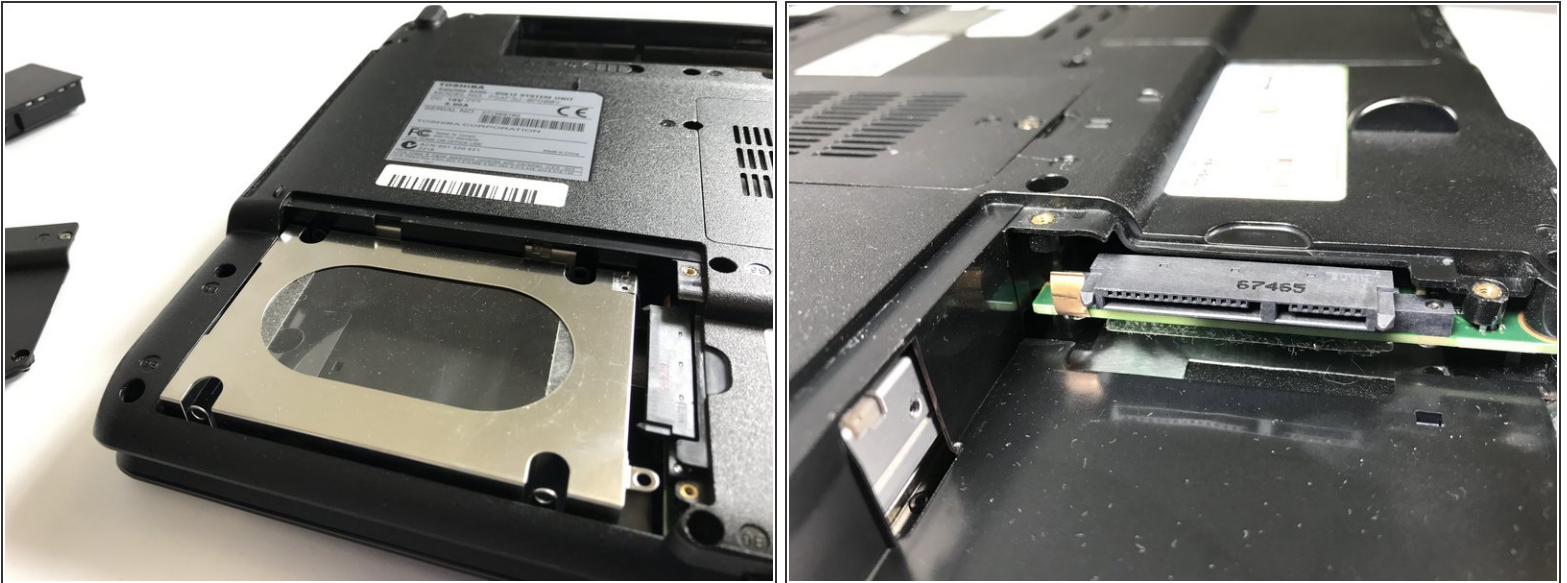
- Using a finger or small prying device, pull the battery upwards from the recessed area. Then, simply pull the battery out of the notebook and gently set it aside.

Step 4 — Hard Drive



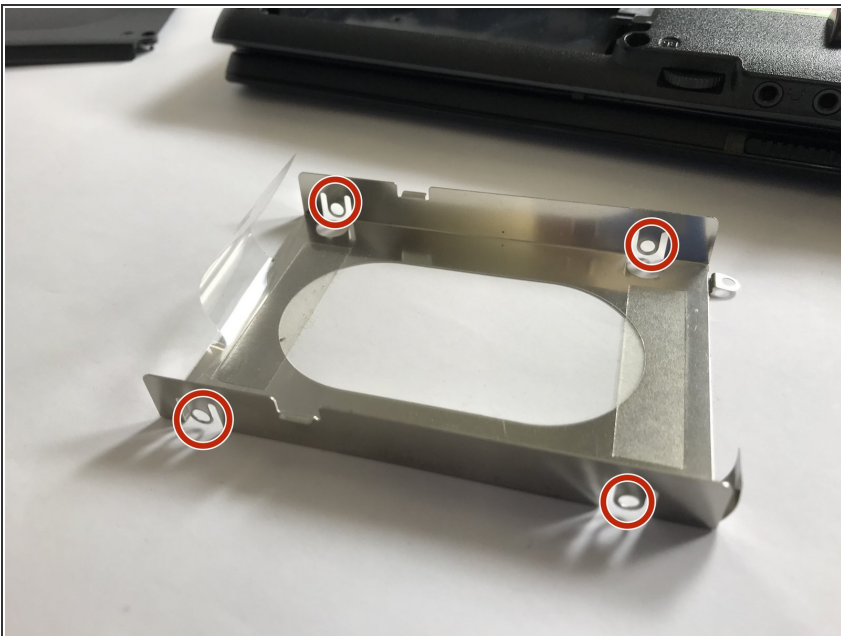
- Remove the two 3mm Phillips #00 screws holding the hard drive bay cover in place.

Step 5



- Remove the caddy by pulling it towards the left. This will disconnect the hard drive from the SATA interface.
- Then, simply pull the caddy out of the notebook

Step 6



- The hard drive will be held in the hard drive caddy by four 1.5mm Phillips PH00 screws. Remove these screws to remove the old drive and install a new hard drive or solid state drive.

To reassemble your device, follow these instructions in reverse order.