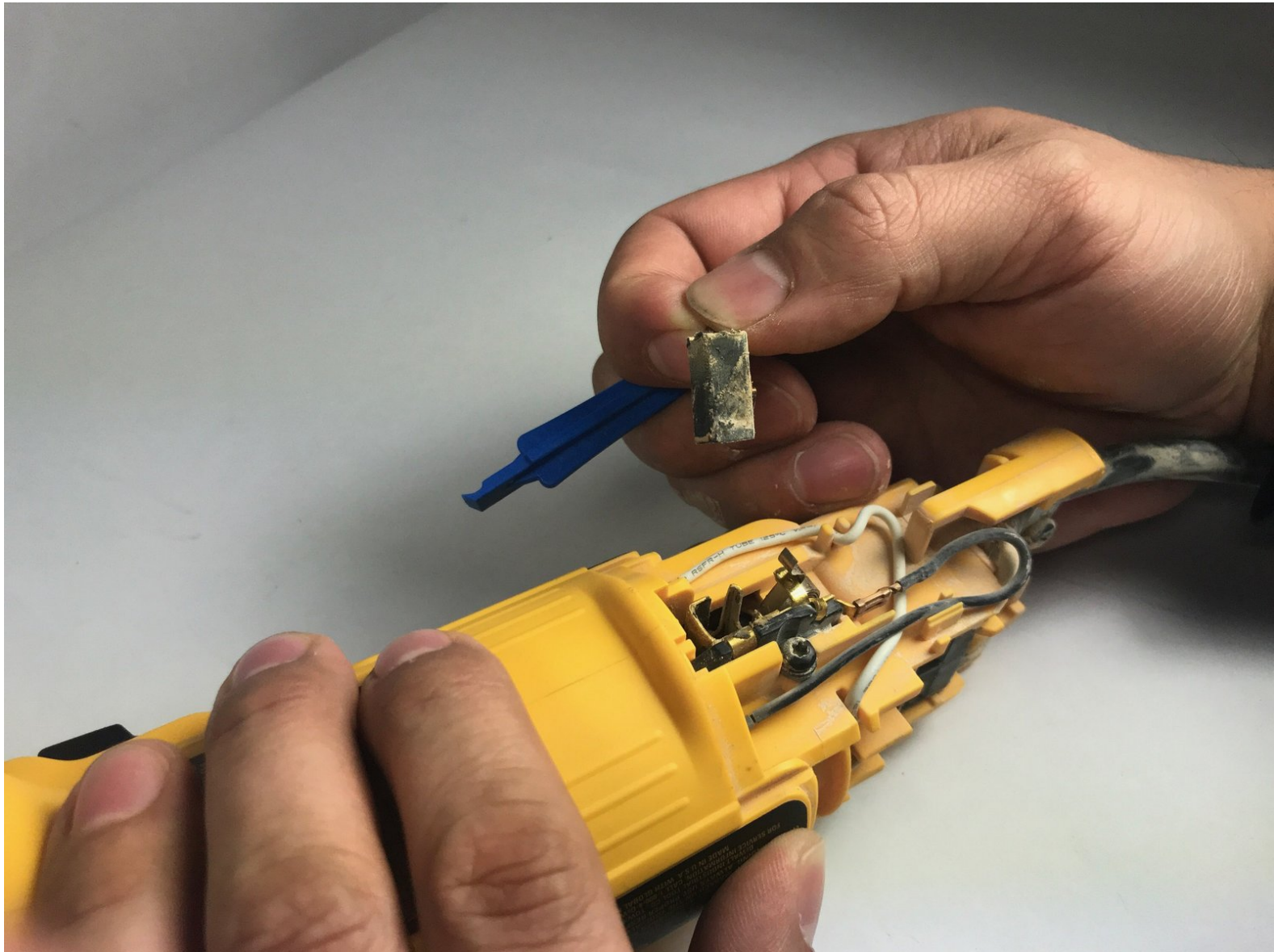




DeWalt DWE4011 Carbon Brushes Replacement

How to replace the carbon brushes on your DeWalt DWE4011.

Written By: Kiera Sloan



INTRODUCTION

The carbon brushes are one part that both wears out quickly and can cause a wide variety of problems if faulty. Follow these simple steps to replace them.



TOOLS:

- [T15 Torx Screwdriver](#) (1)
- [iFixit Opening Tools](#) (1)



PARTS:

- [Carbon Brush Set](#) (1)

Step 1 — Carbon Brushes



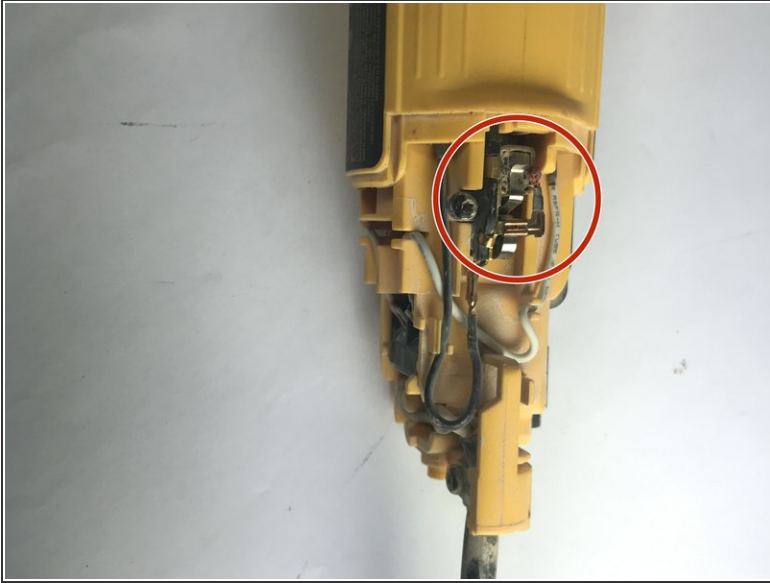
- Turn to the bottom of the device and remove the 5/8" (17mm) T15 Torx screw shown using a T15 Torx Screwdriver.

Step 2



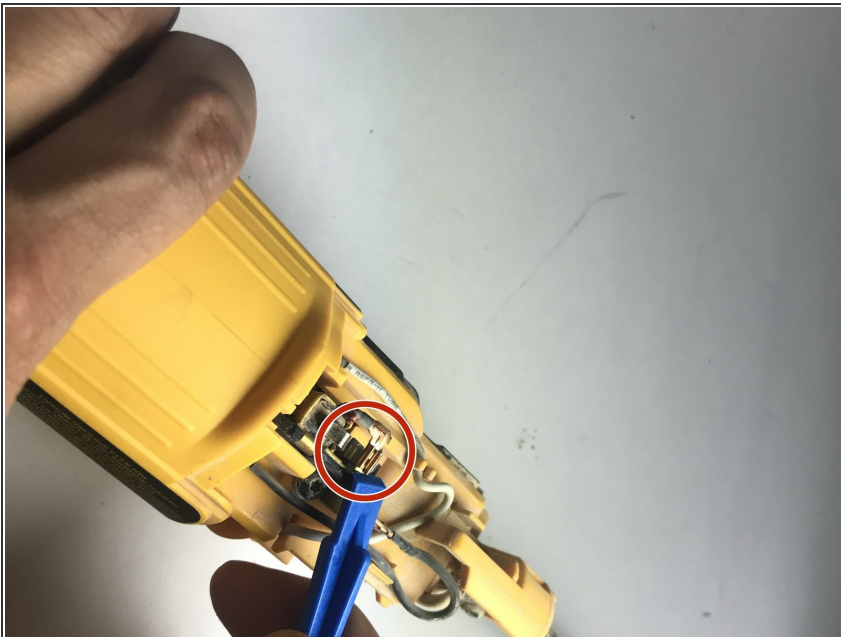
- Remove the outer casing to expose the brushes by pulling the end handle away from the field case.

Step 3



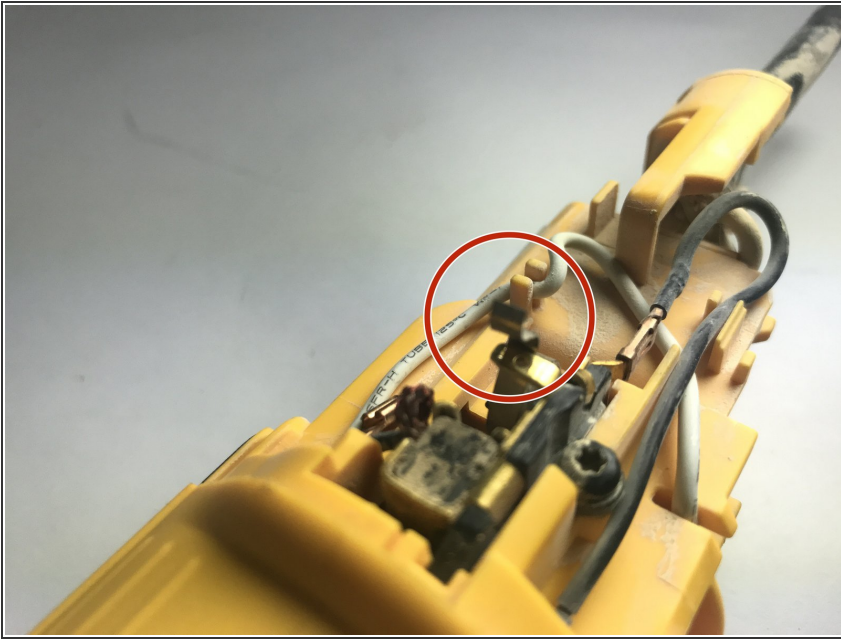
- Locate both carbon brushes on either side of the device.

Step 4



- Using the iFixit opening tool, remove the female terminal connecting the carbon brush wire to the male terminal.

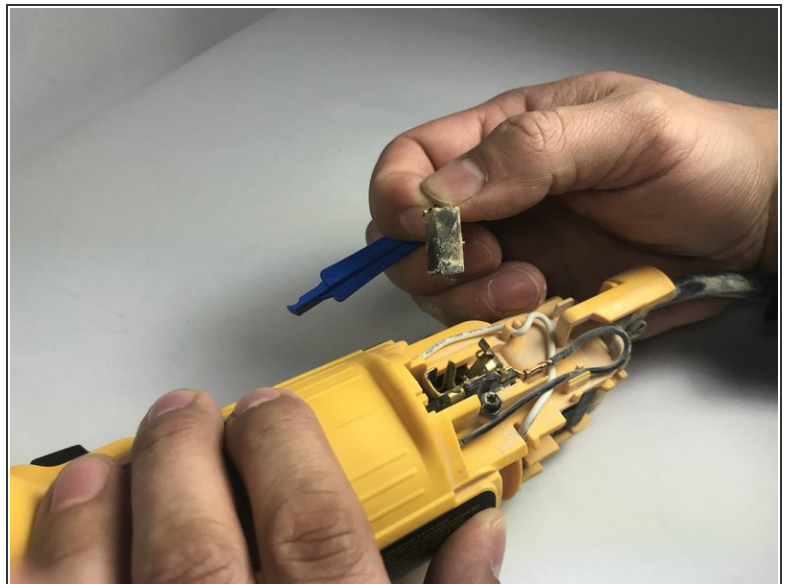
Step 5



- Keeping a tight hold the entire time, move the spring covering the carbon brush so that it is behind the male terminal.

⚠ Be extremely careful, as the spring is tightly coiled and can easily get away from you.

Step 6



- Taking hold of the wire you removed in step 4, gently slide the carbon brush out of its casing and remove it from the device.
- Flip over the device to reveal the second carbon brush, and repeat steps 4 through 6 on the other side.

Congratulations! To put your device back together, simply reverse the above steps.