



Motorola Moto E5 Play Screen Replacement

Follow this guide to replace the screen for the...

Written By: Craig Lloyd



INTRODUCTION

Follow this guide to replace the screen for the Motorola Moto E5 Play.

Before you begin, download the [Rescue and Smart Assistant](#) app to backup your device and diagnose whether your problem is software or hardware related.

For your safety, discharge your existing battery below 25% before disassembling your phone. This reduces the risk of a dangerous thermal event if the battery is accidentally damaged during the repair.

TOOLS:

[Spudger](#) (1)
[T5 Torx Screwdriver](#) (1)
[iFixit Opening Tool](#) (1)
[iFixit Opening Picks \(Set of 6\)](#) (1)
[Tweezers](#) (1)

PARTS:

[Moto E5 Play \(XT1921\) Screen - Genuine](#) (1)
[Tesa 61395 Tape](#) (1)

Step 1 — Back Cover



- Insert your fingernail or the flat end of a spudger into the notch on the bottom right corner of the phone.
- Pry with your fingernail or twist the spudger to release the back cover's clips from the phone.

Step 2



- Insert your fingernail or the flat end of a spudger into the seam on the bottom of the phone and slide it along the edge to release the clips holding the back cover to the phone.

Step 3



- Continue sliding your fingernail or spudger along the seam around the rest of the phone to release the remaining clips.

Step 4



- Lift the back cover and remove it from the phone.
- ✦ To reinstall the back cover, align the cover with the phone and squeeze along the edges to snap the clips back into place.

Step 5 — Battery



- Insert your fingernail or the flat end of the spudger into the notch at the bottom of the battery.
- Pry with your fingernail or spudger to free the battery from its recess.

Step 6



- Remove the battery.

✦ When installing the battery, make sure the battery's contacts line up with the three gold pins in the top right of the battery compartment.

Step 7 — Screen



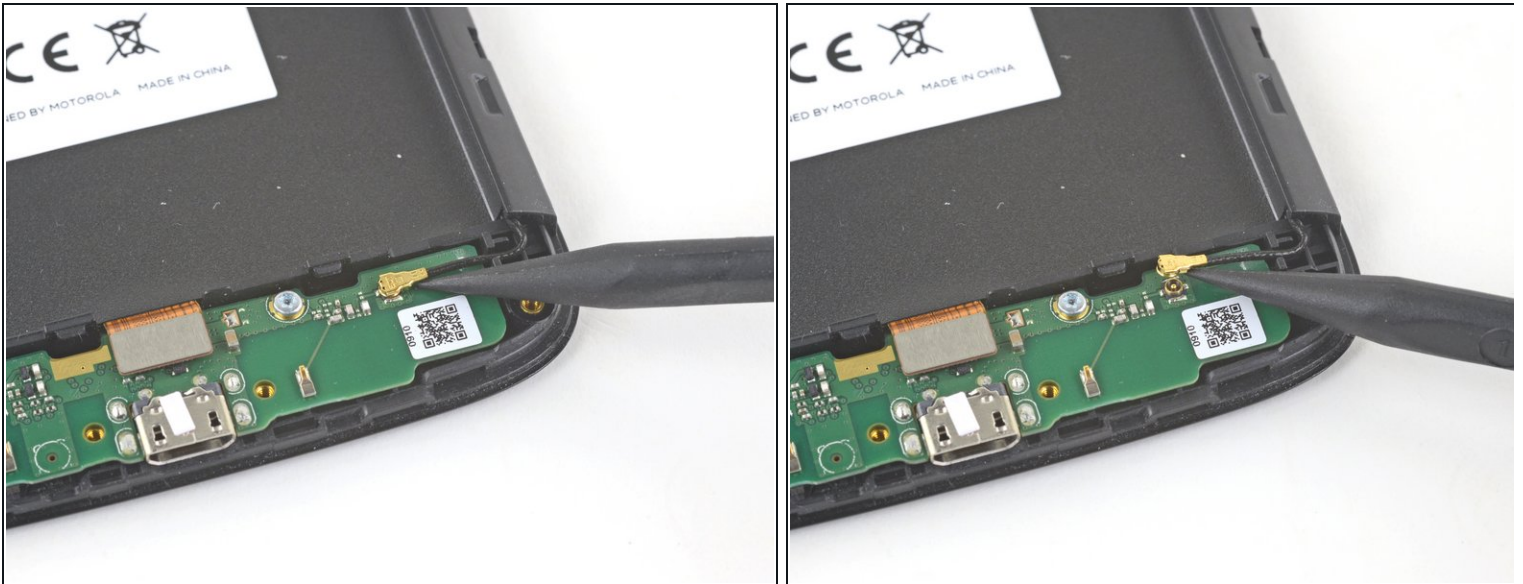
- Remove the thirteen 3.5 mm-long T5 Torx screws securing the motherboard and daughterboard covers to the phone's frame.
- ✎ A couple of screws are hidden under "S" stickers. It may help to remove these stickers with a pair of tweezers before removing the screws.

Step 8



- Insert the flat end of a spudger into the seam on the bottom of the daughterboard cover.
- Twist the spudger slightly to unclip the daughterboard cover.
- Remove the daughterboard cover.

Step 9



- Use the point of a spudger to pry up and disconnect the antenna cable from the daughterboard.

Step 10



- Use a spudger to pry up and disconnect the motherboard flex cable connector from the daughterboard.

Step 11



- Remove the 3 mm-long T5 Torx screws securing the daughterboard to the phone's frame.

Step 12



- Insert the flat end of a spudger into the gap below the daughterboard and to the left of the charging port.
- Pry the daughterboard up slightly with the spudger to loosen it from its recess.
- Lift and remove the daughterboard, taking care not to snag any cables.

Step 13



- Use the point of a spudger to pry up and loosen the vibration motor from its recess.

Step 14



- Use an opening pick to carefully slice the adhesive underneath the vibration motor's contact pads.
- Remove the vibration motor.

Step 15



- Insert an opening tool into the seam on the right side of the phone near the top.
- Gently pry upwards until the hidden clip on the motherboard cover releases.

Step 16



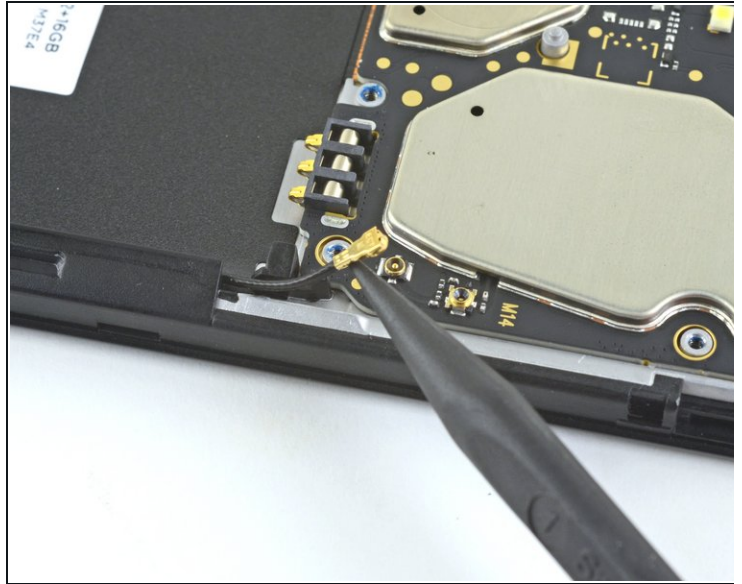
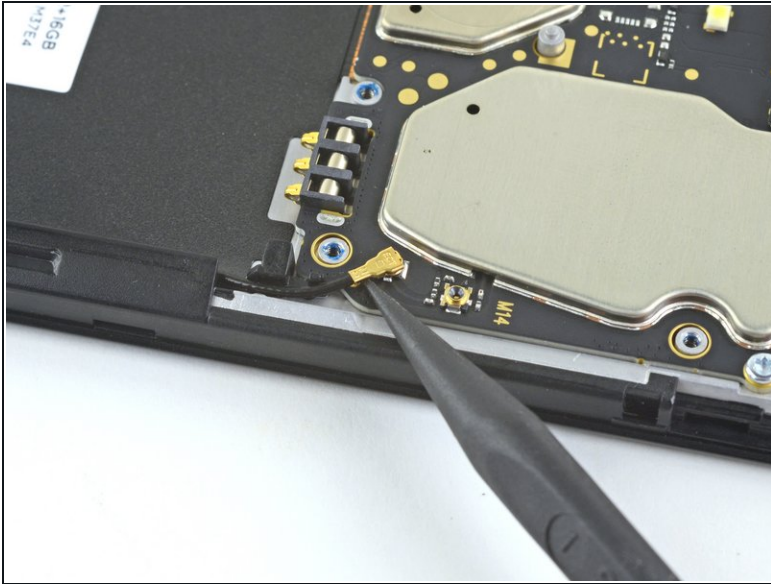
- Insert an opening tool into the seam on the top of the phone, to the right of the indentation.
- Gently pry upwards until the hidden clip on the motherboard cover releases.

Step 17



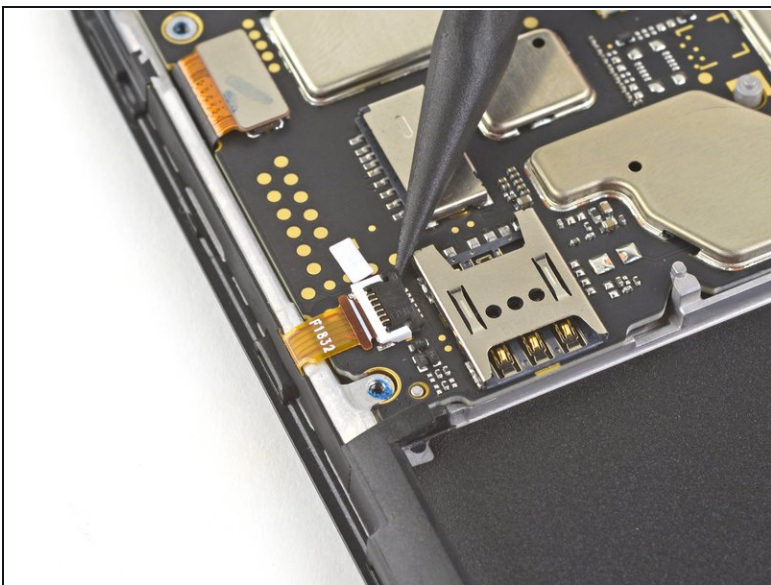
- ⓘ Make sure the three clips on the motherboard cover have not re-engaged.
- Lift the motherboard cover from the top and remove it.

Step 18



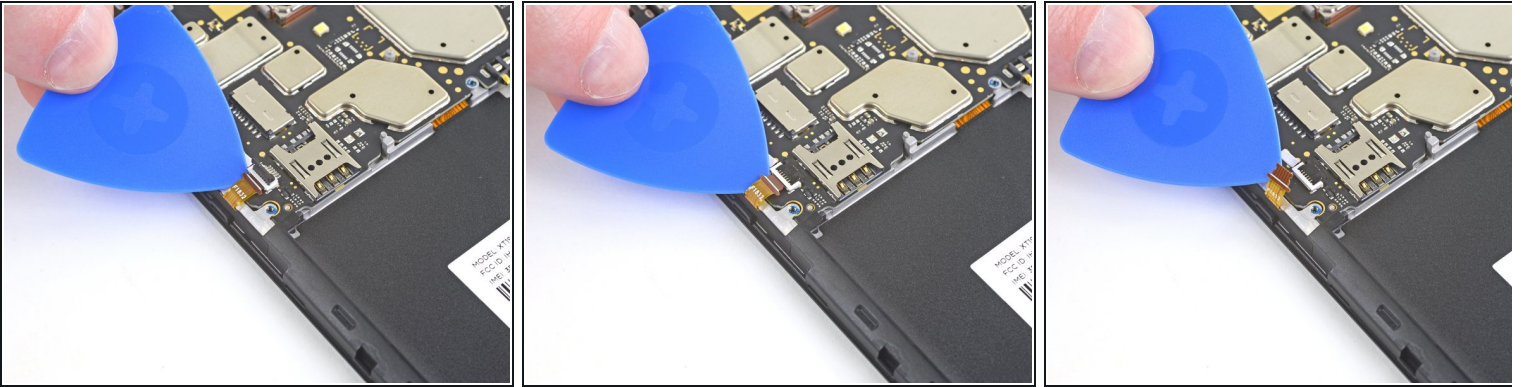
- Take note of which socket the antenna cable is attached to on the motherboard.
- Use the point of a spudger to pry up and disconnect the antenna cable from the motherboard.
- ☑ Be sure to attach the antenna cable to the same socket during reassembly.

Step 19



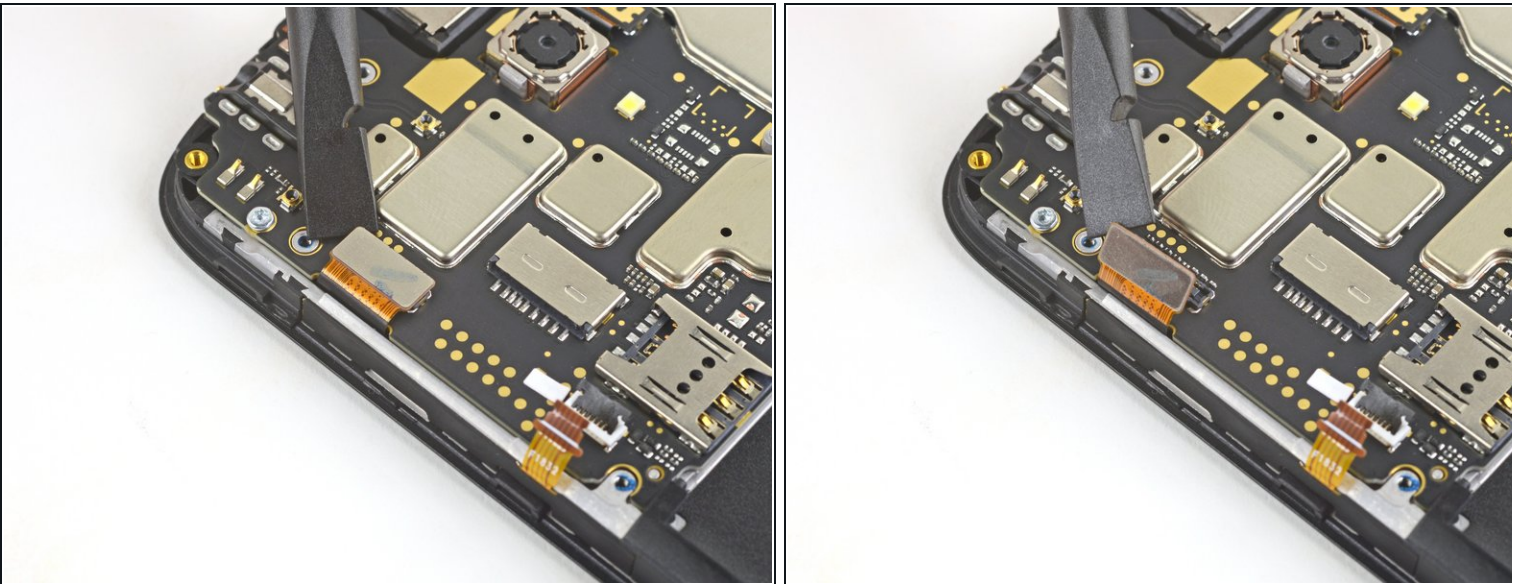
- Use the point of a spudger to lift up the locking mechanism securing the ribbon cable to the ZIF connector.

Step 20



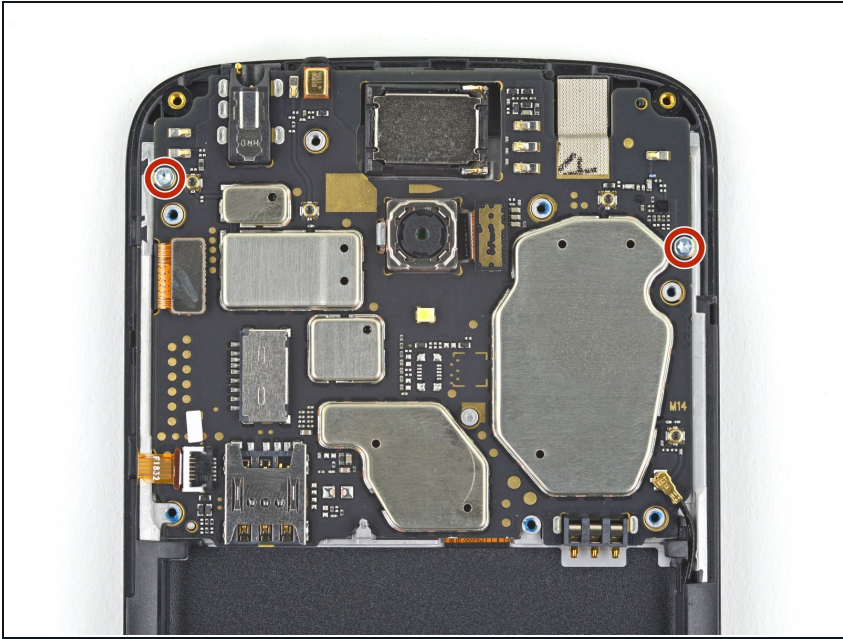
- Slide an opening pick between the ribbon cable and the motherboard to remove the cable from its connector.

Step 21



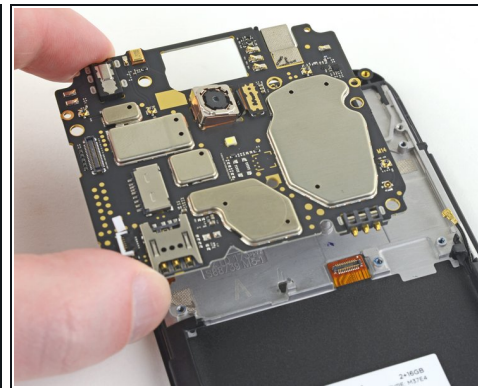
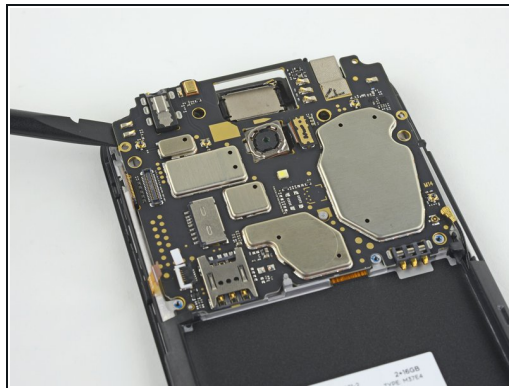
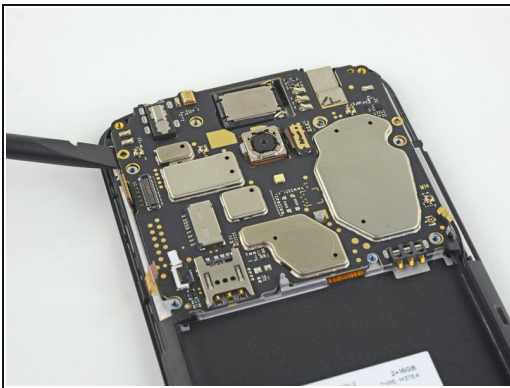
- Use a spudger to pry up and disconnect the display connector from the motherboard.

Step 22



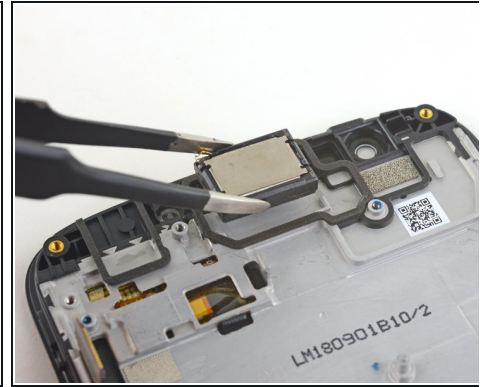
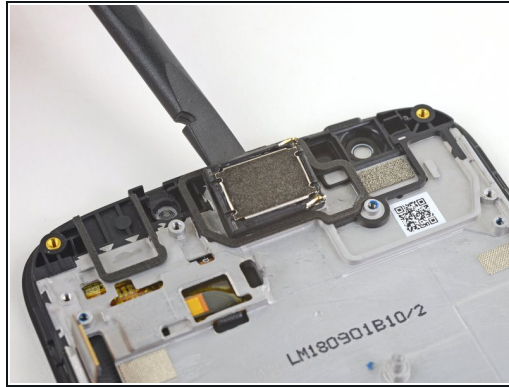
- Remove the two 3 mm-long T5 Torx screws securing the motherboard to the phone's frame.

Step 23



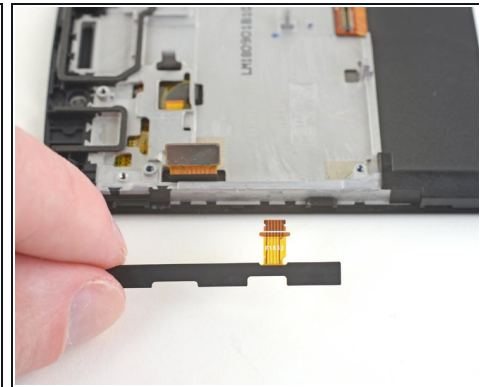
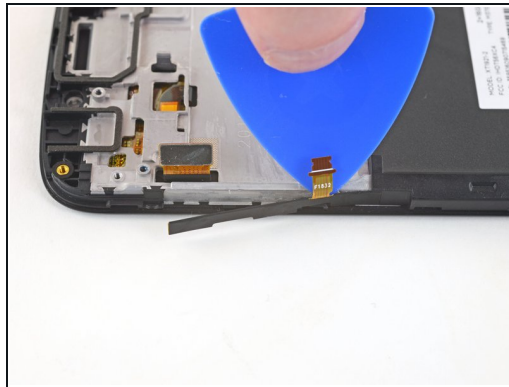
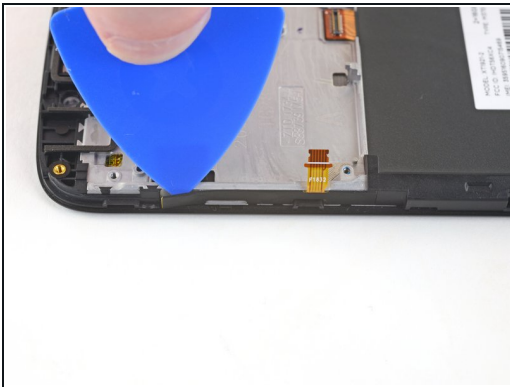
- Insert the flat end of a spudger underneath the motherboard, anywhere near the top edge of the phone.
 - Lift the spudger slightly to loosen the motherboard from the frame.
 - Remove the motherboard from the phone.
- i** The underside of the motherboard is still connected to the phone by the daughterboard flex cable connector near the bottom. Lifting up on the motherboard should disconnect it. If not, use the flat end of a spudger near the connector to disconnect it.

Step 24



- Use the flat end of a spudger to pry up and loosen the earpiece module from its recess.
- Use your fingers or a pair of tweezers to remove the earpiece module.

Step 25



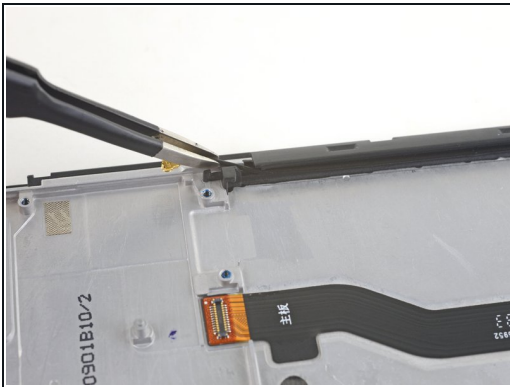
- Insert an opening pick in between the frame and button assembly.
- Carefully slide the opening pick underneath the button assembly to slice the adhesive.
- Remove the button assembly.

Step 26



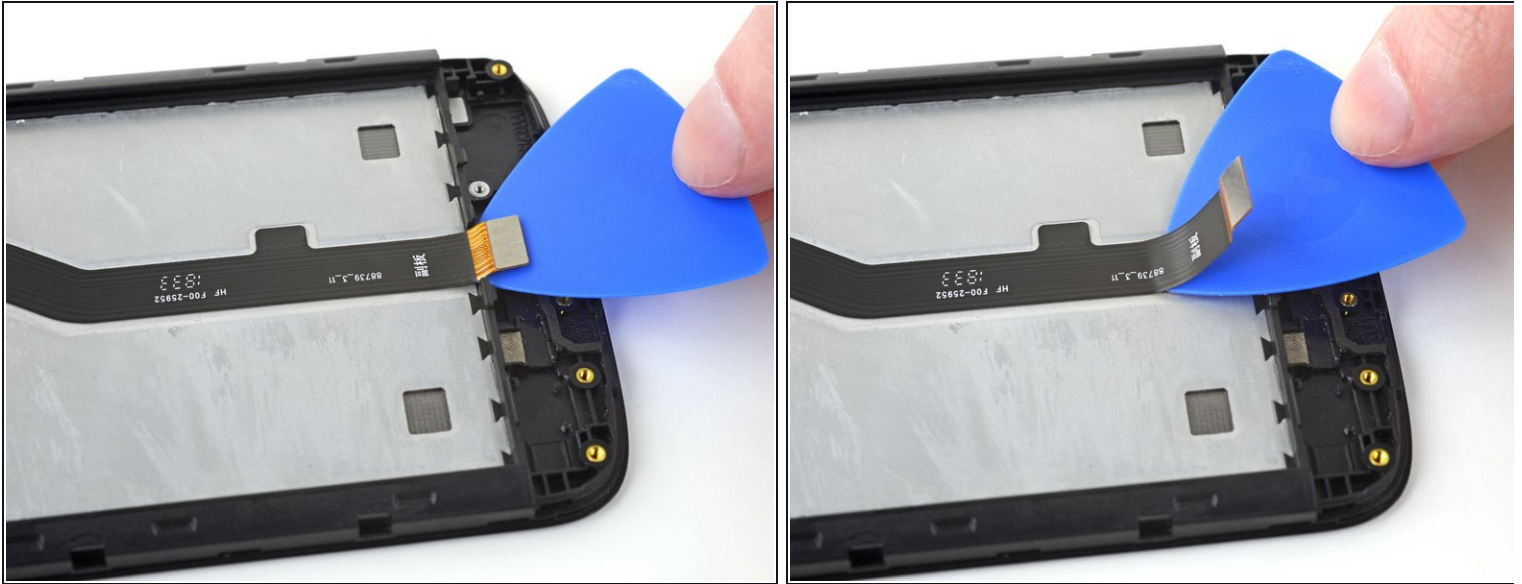
- Use the point of a spudger to pry up a corner of the black battery mat.
- Use your fingers to slowly peel the battery mat from the frame.
 - ❗ There is a flex cable underneath the mat, and portions may stick to the mat as you peel it off. If that happens, carefully loosen the cable from the mat as you peel.

Step 27



- Use your fingers or a pair of tweezers to lift and de-route the antenna cable from its groove on the right edge of the phone.

Step 28



- Insert an opening pick underneath the daughterboard flex cable.
- Slide the pick along the underside of the cable, slicing the adhesive and removing the cable from the phone.

Step 29



- Only the frame and the LCD screen and digitizer assembly remain. Double-check that you removed all of the necessary components.

Compare your new replacement part to the original part—you may need to transfer remaining components or remove adhesive backings from the new part before installing.

To reassemble your device, follow these instructions in reverse order.

Take your e-waste to an [R2 or e-Stewards certified recycler](#).

Repair didn't go as planned? Check out our [Motorola Moto E5 Play Answers community](#) for troubleshooting help.