



# Samsung Galaxy S8 Display Adhesive Replacement

This guide shows how to apply and replace the screen adhesive for the Samsung Galaxy S8.

Written By: Arthur Shi



# INTRODUCTION

Follow this guide to replace the screen or display adhesives for the Galaxy S8. This procedure is meant to be followed in conjunction with the [Galaxy S8 screen replacement guide](#).



## TOOLS:

- [Tweezers](#) (1)
- [Isopropyl Alcohol](#) (1)



## PARTS:

- [Galaxy S8 Display Adhesive Strips](#) (1)

## Step 1 — Display Adhesive



- Remove all traces of adhesive and debris from the phone's frame. Clean the adhesion surface with high concentration isopropyl alcohol (over 90%) and wipe it clean with a lint-free cloth.  
**⚠ If glue or glass remnants are left behind, the new display will not mount correctly and may be damaged.**
- Lay the adhesive strips out to get an idea of where they go.
- Peel off the **clear plastic backing** from the large pre-cut adhesive strip, exposing one side of adhesive.

## Step 2



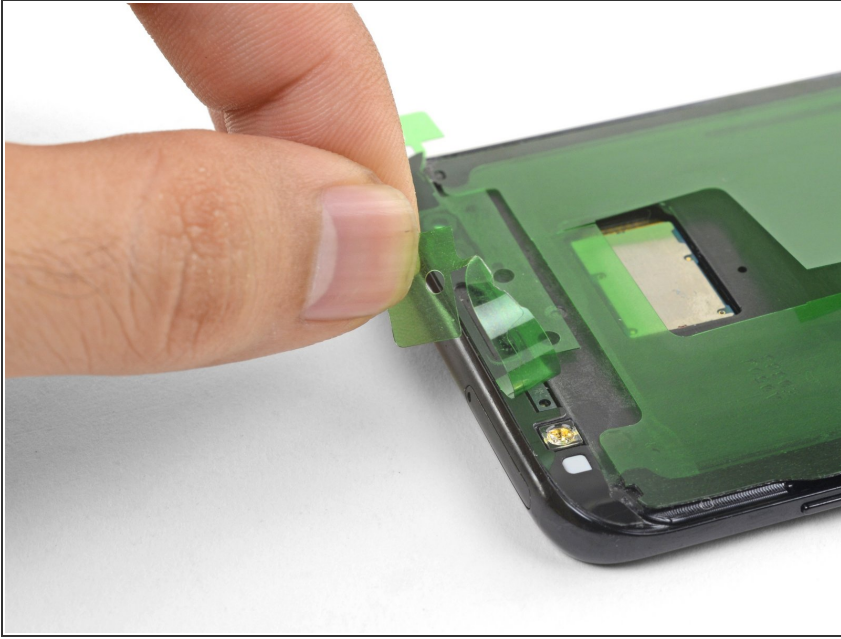
- Carefully line up an edge of the adhesive with the corresponding edge of the phone frame.
  - ❗ Make sure that the [adhesive cutouts match the phone's](#).
- Set the adhesive down lightly on the frame.
  - If it is not properly aligned, carefully peel the adhesive back up.
- Once the adhesive is aligned, use your fingers to press the adhesive onto the frame.

## Step 3



- Peel one of the end adhesive strips from the clear plastic backing.
  - ❗ The strips are cut for a specific end and are not interchangeable.
- Hold the strip by the two green end tabs and line the adhesive strip with the phone frame.
- Lay the adhesive down lightly on the phone. Make sure that all cutouts are properly aligned.
- Once aligned, use your fingers to press the adhesive into place.
- Repeat the procedure for the remaining adhesive strip.

## Step 4



- Continue reassembling your device until you are ready to attach the screen.
- ⓘ If possible, test your screen's functionality before sticking it in place.
- Peel and remove the green plastic liner from all adhesive strips to expose the screen-facing adhesive.
- Align and set the phone screen on top of the adhesive.
- Use your fingers to squeeze around the perimeter of the phone to set the adhesive.
- Apply a few books worth of weight on top of the screen for an hour to help the adhesive bond.

[Follow this link](#) to return to the Galaxy S8 screen replacement guide.