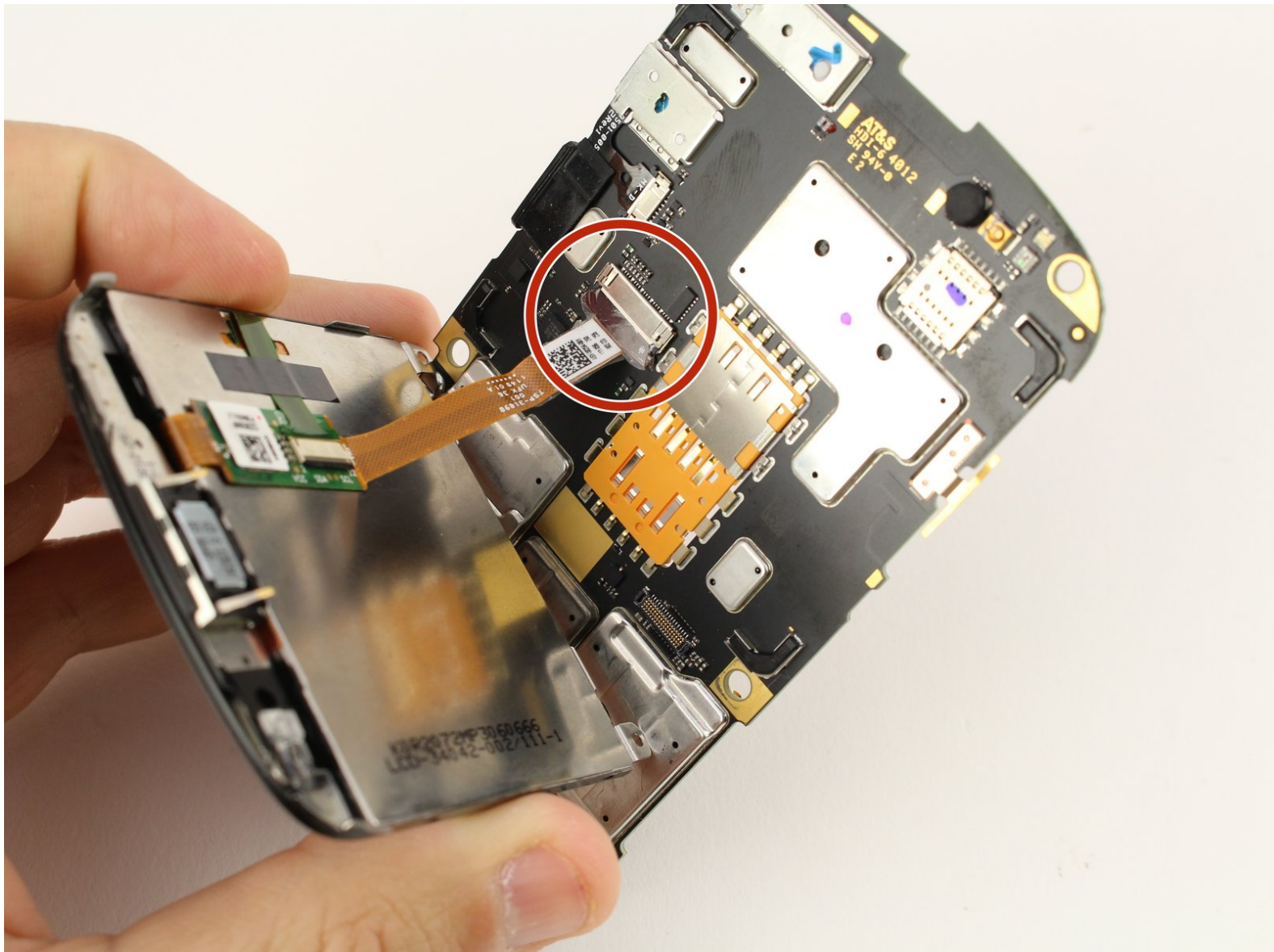




Blackberry Bold 9900 Motherboard Replacement

This guide will show you how to replace your Blackberry Bold 9900 motherboard.

Written By: Sarah Westberg



INTRODUCTION

In order to replace your Blackberry Bold 9900 motherboard, you will need to follow several prerequisite guides and really take this phone apart. You will want to follow this guide if the Blackberry's motherboard becomes damaged.



TOOLS:

- [Spudger](#) (1)
- [T5 Torx Screwdriver](#) (1)



PARTS:

- [Blackberry Bold 9900 Screen](#) (1)

Step 1 — Battery



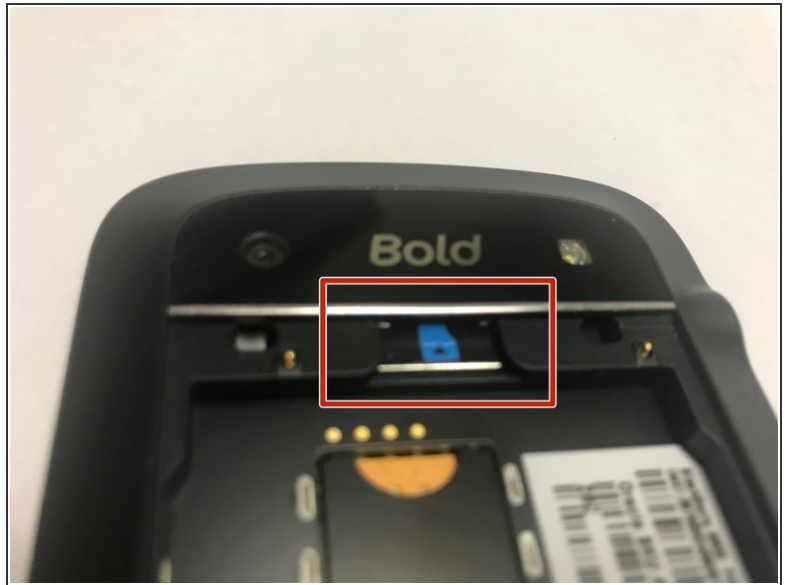
- Place phone screen down.
- Use your finger to lift upward on the battery case.
- Pull the cover away from the battery.

Step 2



- Lift the edge of battery with the green stripe upward to remove battery.

Step 3 — MicroSD card



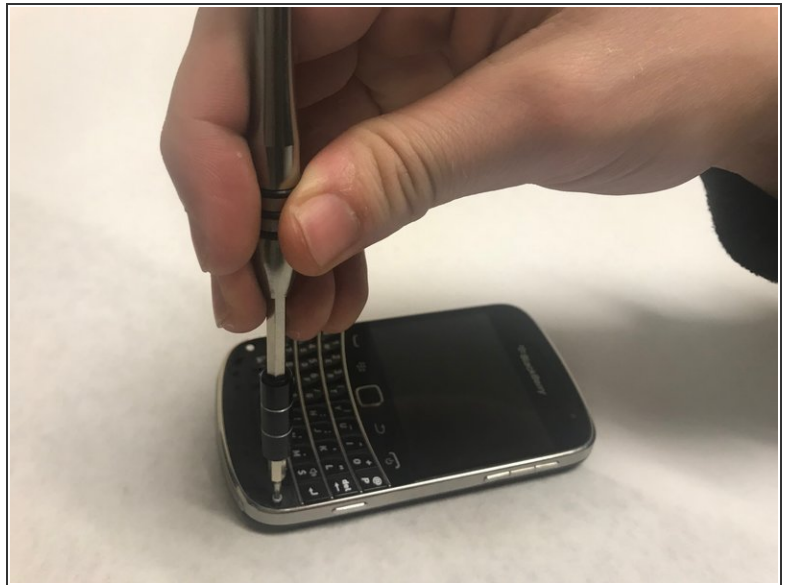
- The MicroSD card is located where the red rectangle is shown.
- To remove MicroSD card, push the card inward towards the top of the phone then release. The MicroSD card will be ejected.

Step 4 — Keyboard



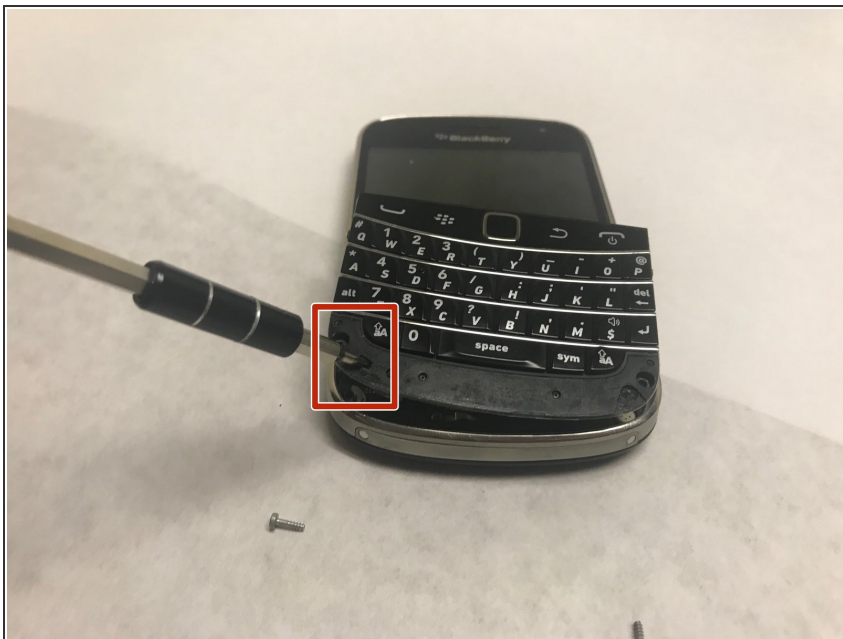
- Lift the bezel at the bottom of the phone up and peel it away from the phone.

Step 5



- Remove the two exposed screws using the T5 Torx screwdriver.

Step 6



- Now lever the keyboard up using the screwdriver in the indicated hole.

Step 7



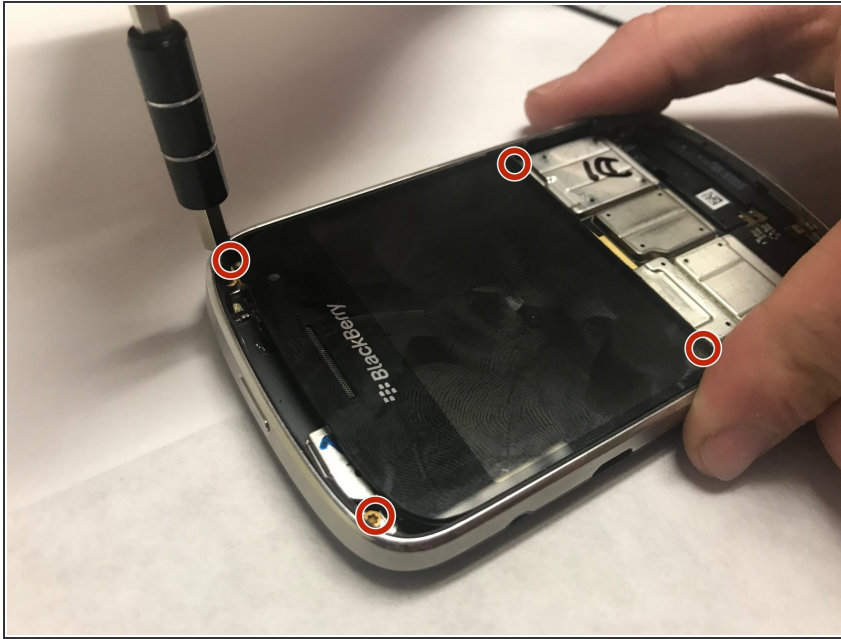
- The keyboard is attached via a ribbon cable. Pull the cable up to remove the keyboard.

Step 8 — Mini-SIM removal



- The Mini-SIM card is located inside the red rectangle.
- To remove the Mini-SIM Card, push and slide the card inward towards the top of the phone. It will be ejected.

Step 9 — Back Case



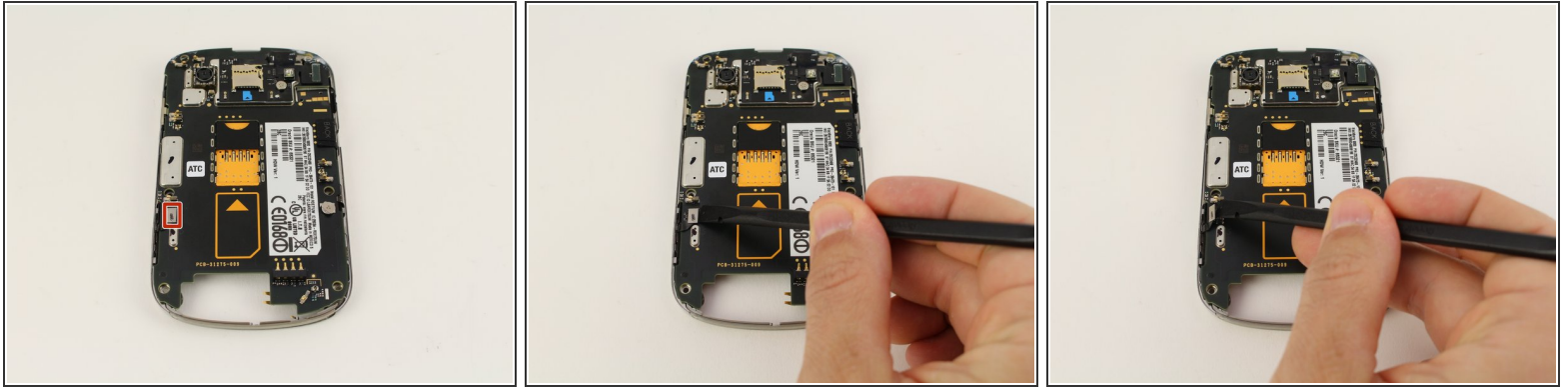
- Using the T5 Torx Screwdriver, remove the four torx screws that are located on the bottom half of the device

Step 10



- Now, carefully and gently using your fingers, lift and remove the assembly from the back case.

Step 11 — Power/Volume Button



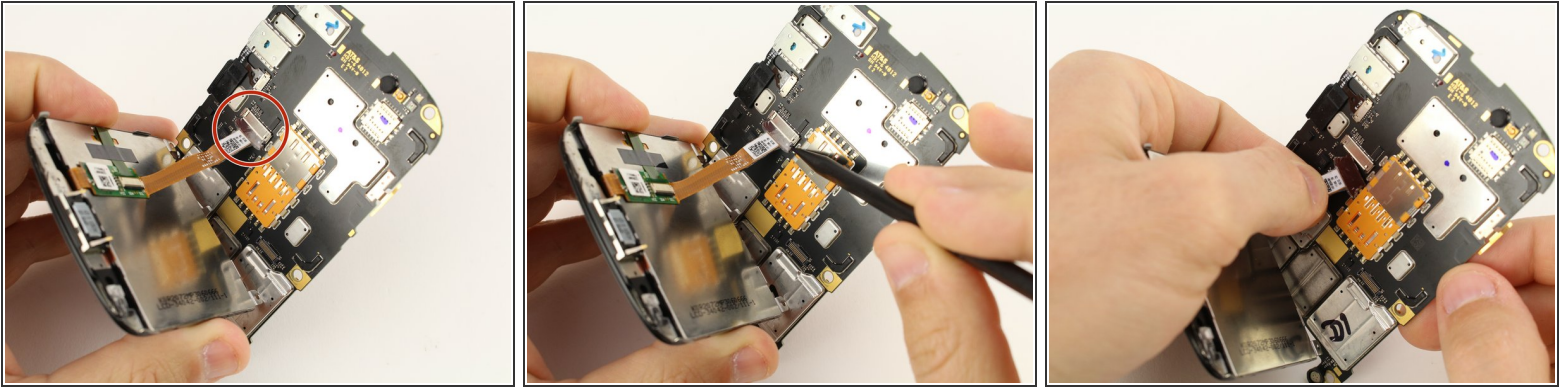
- Use the black nylon spudger to pop the press fit connector up from the lower left corner of the motherboard.

Step 12



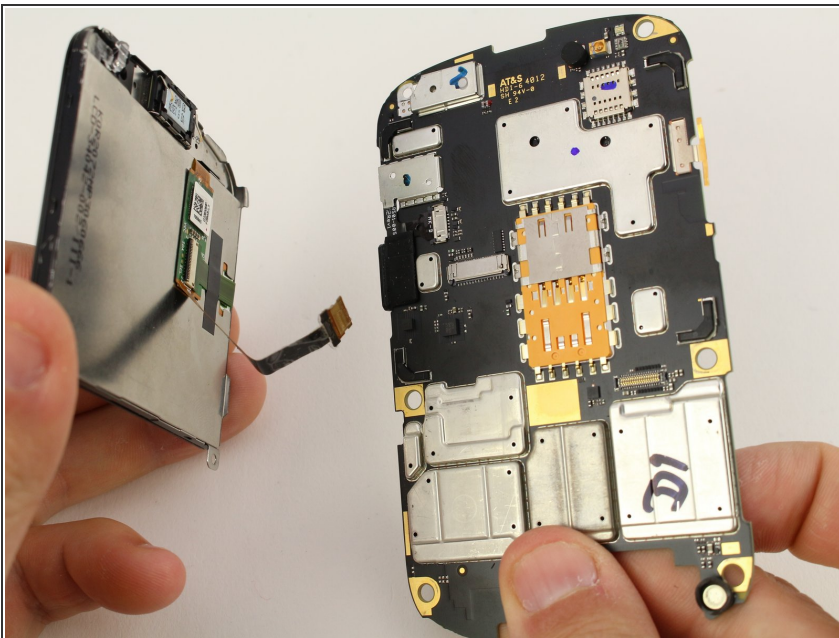
- Lift the midframe, which contains the power/volume buttons, off of the motherboard and screen.

Step 13 — Motherboard



- Using a spudger, gently walk the display cable out from the motherboard.
- When it seems it has become loose enough, remove it by pinching the ribbon firmly with your fingers and gently sliding it the rest of the way out.

Step 14



- Remove the motherboard from the screen.

To reassemble your device, follow these instructions in reverse order.