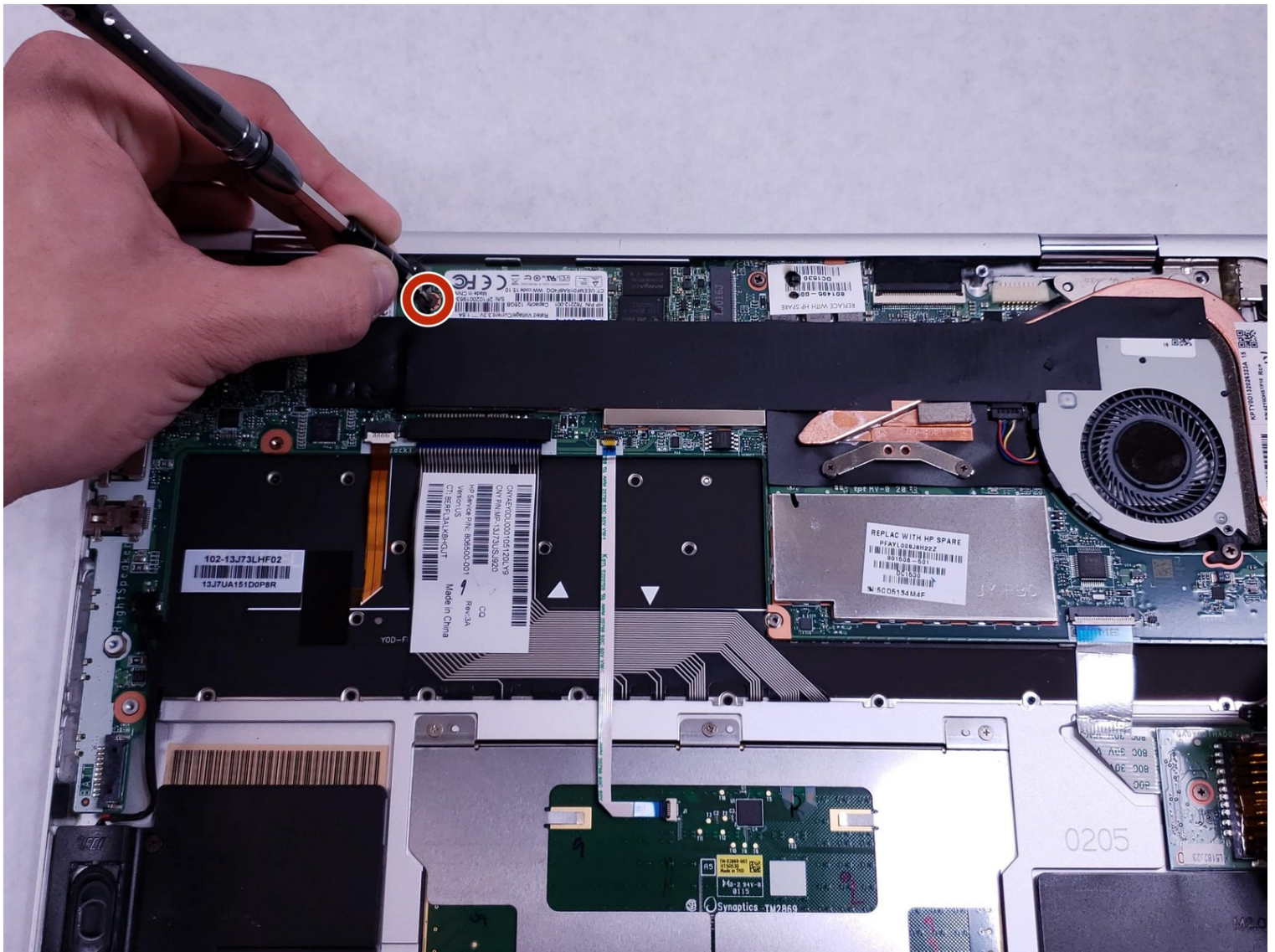




Replacement

This guide will instruct you on how to remove...

Written By: Brandon Carvalho



INTRODUCTION

This guide will instruct you on how to remove and replace the hard drive. Replacement of the hard drive may be necessary if more storage is needed or if the hard drive is not working.



TOOLS:

iFixit Opening Tool (1)
Phillips #1 Screwdriver (1)
T5 Torx Screwdriver (1)
Phillips #000 Screwdriver (1)



PARTS:

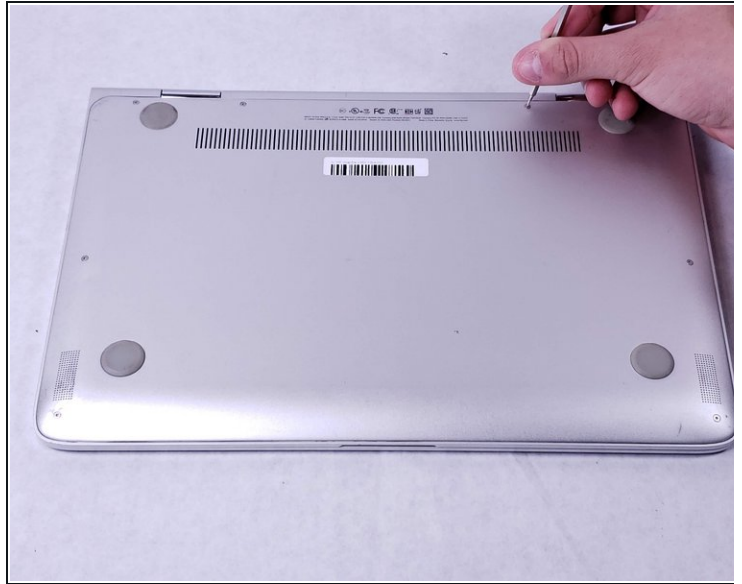
Crucial MX500 1 TB SSD (1)
Crucial MX500 250 GB SSD (1)
Crucial MX500 500 GB SSD (1)
Crucial MX500 2 TB SSD (1)

Step 1 — Bottom Cover



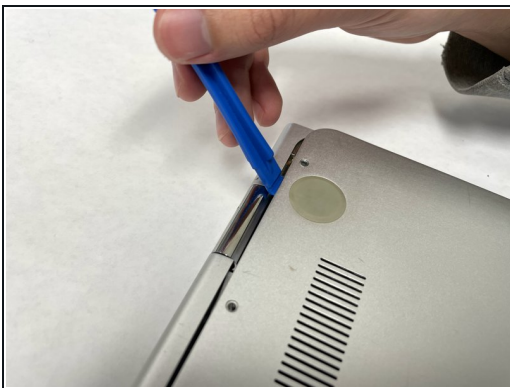
- Turn off and unplug the laptop.
- Flip over the laptop so that the bottom backplate is exposed.

Step 2



- Use a T5 screwdriver to remove the six 3 mm screws that secure the backplate.
- Use the same screwdriver to remove the two 7 mm screws.

Step 3



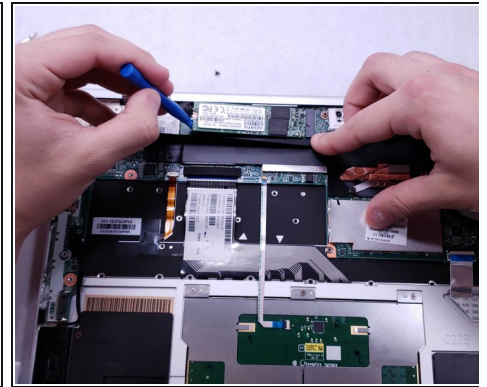
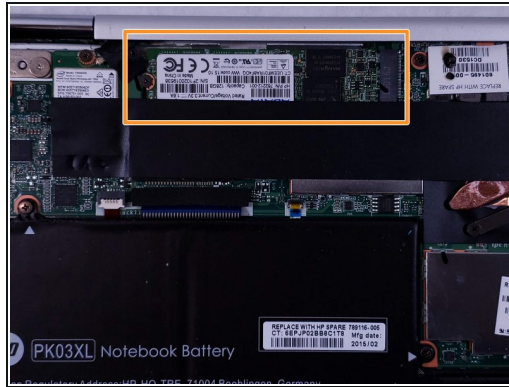
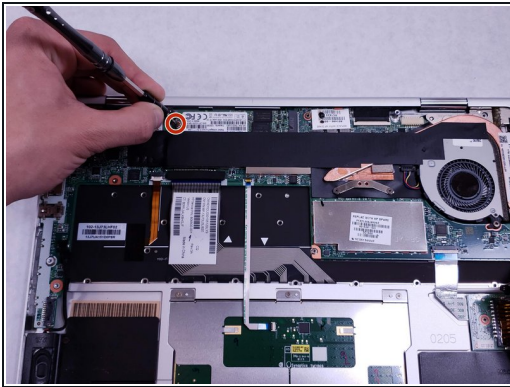
- Insert an opening tool under the bottom cover at the screen hinges, and gently pry the cover free.
- Carefully work your way around the cover's edges to pop it off completely.

Step 4 — Battery



- With the backplate removed, remove the four 3 mm screws securing the battery with a Phillips #1 screwdriver.
- With the screws removed, disconnect the 3 wires connected to the battery.
- ⓘ Tweezers may be needed to remove the wires.

Step 5 — Hard Drive



- Using a Phillips #000 screwdriver, unscrew the one 2mm screw located to the left of the hard drive.
- With the screw undone, use a plastic spudger, lifting the hard drive from the left side. Once the hard drive is at an angle, pull the hard drive out.

To reassemble your device, follow these instructions in reverse order.