



HP Pavilion 15-n232nr Hard Drive Replacement

This guide will aid in replacement of the hard...

Written By: Trey Stutts



INTRODUCTION

This guide will aid in replacement of the hard drive in an HP Pavilion 15-n232nr. The process is fairly time consuming due to keyboard removal. Screwdriver, plastic opener, metal spudger, and tweezers are the necessary tools.



TOOLS:

- [Phillips #1 Screwdriver](#) (1)
- [Tweezers](#) (1)
- [iFixit Opening Tool](#) (1)
- [Metal Spudger](#) (1)
- [Phillips #0 Screwdriver](#) (1)
- [Phillips #000 Screwdriver](#) (1)



PARTS:

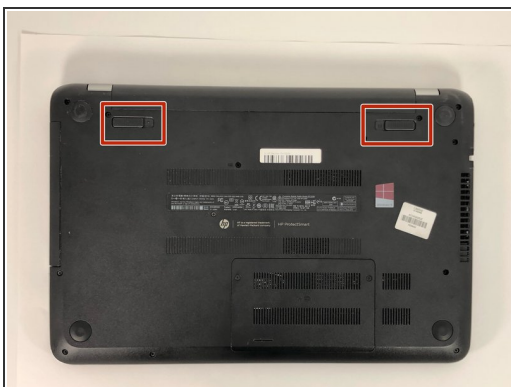
- [Crucial MX500 1 TB SSD](#) (1)
- [Crucial MX500 250 GB SSD](#) (1)
- [Crucial MX500 500 GB SSD](#) (1)
- [Crucial MX500 2 TB SSD](#) (1)

Step 1 — Battery



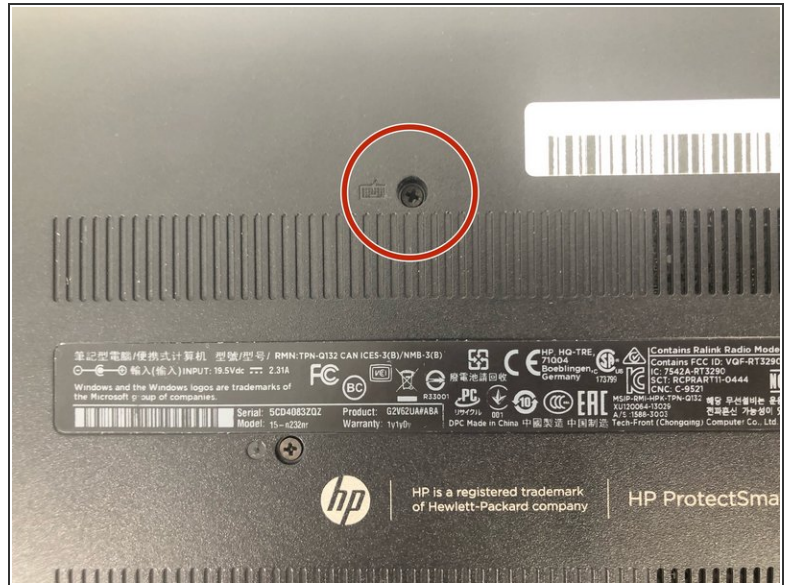
- Flip the laptop over.

Step 2



- Slide the battery locks towards the center of the laptop. The battery will detach automatically.
- Remove the battery by sliding it away from the laptop housing.

Step 3 — Keyboard



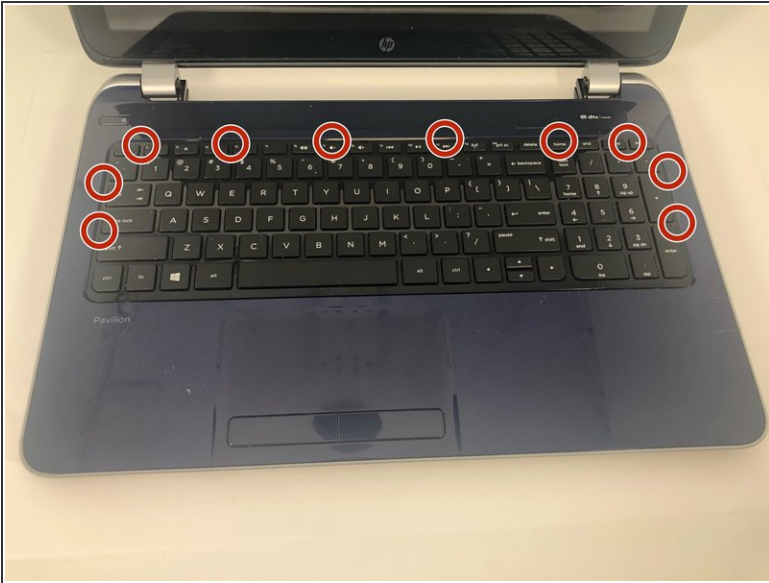
- Unscrew the 6 mm Phillips #1 screw securing the keyboard.

Step 4



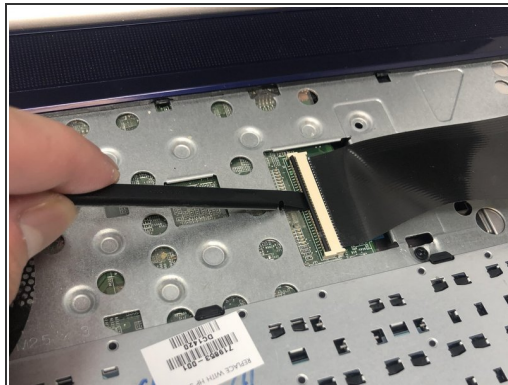
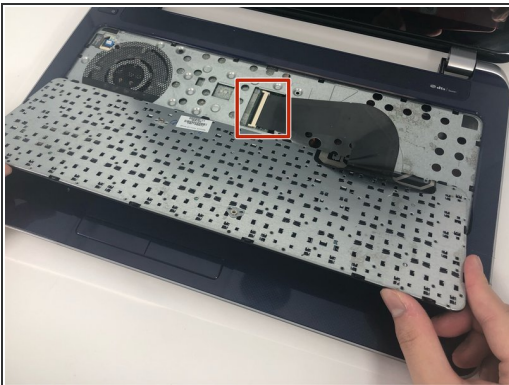
- Flip the laptop to the front side and open it up.

Step 5



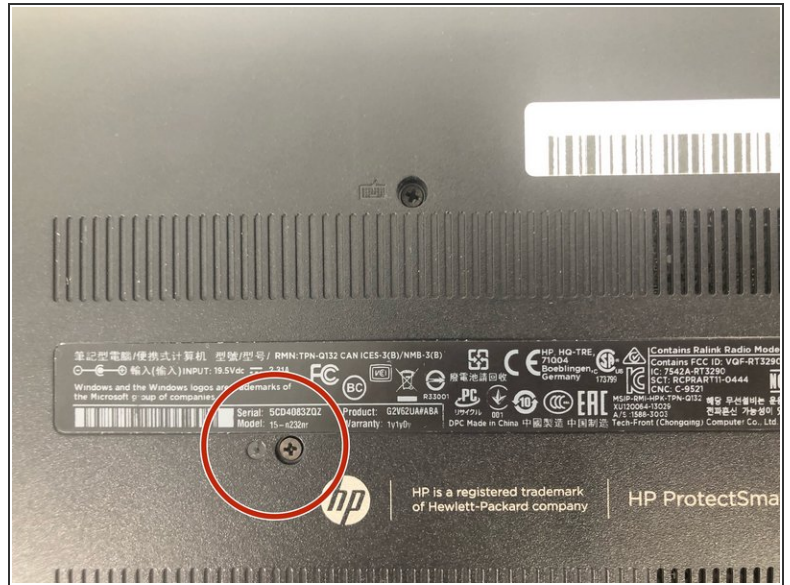
- Use the metal spudger to release the keyboard from the front panel.

Step 6



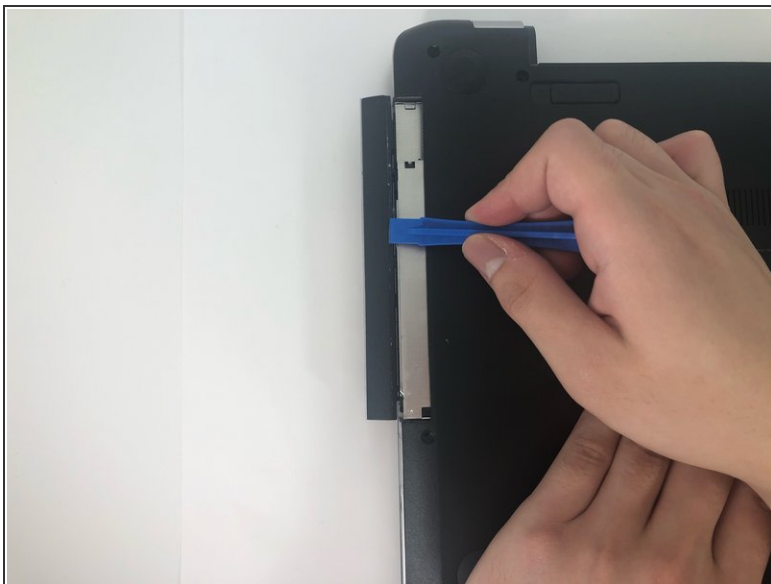
- Flip the keyboard out and locate the connector.
 - Use the spudger to unhinge the the fastener and remove the connector.
- i** Keyboard should be completely detached after this step.

Step 7 — Optical Drive



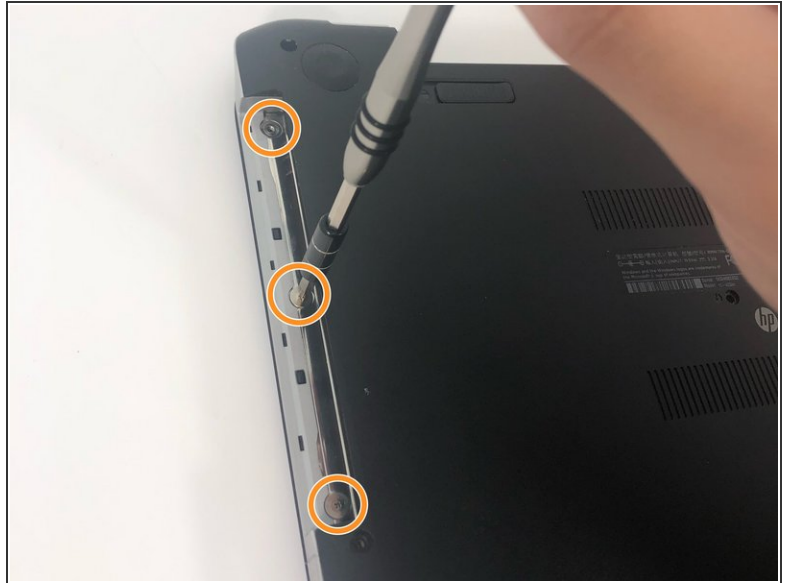
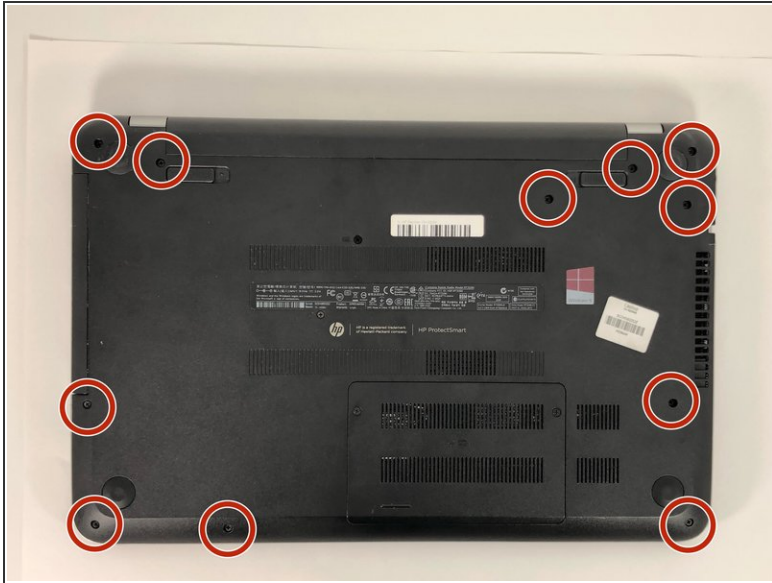
- Remove the 6 mm Phillips #1 screw securing the optical drive.

Step 8



- Use the iFixit opening tool to slide the optical drive away from the laptop housing.

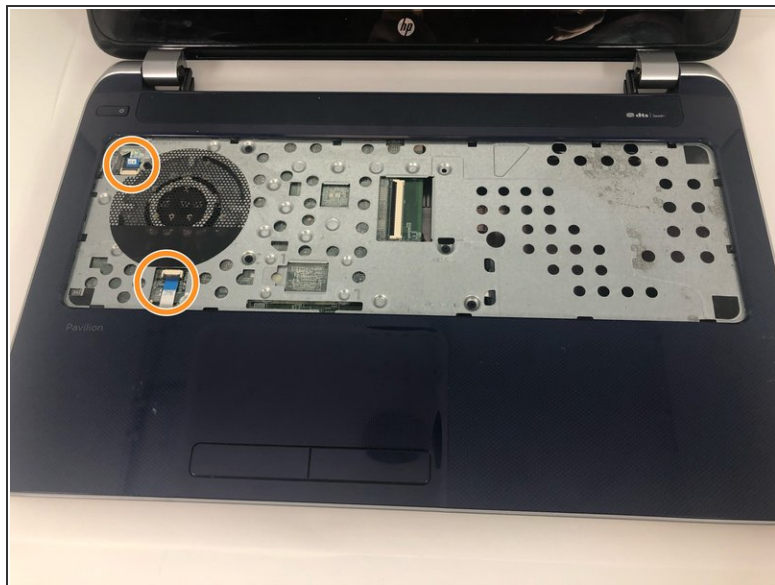
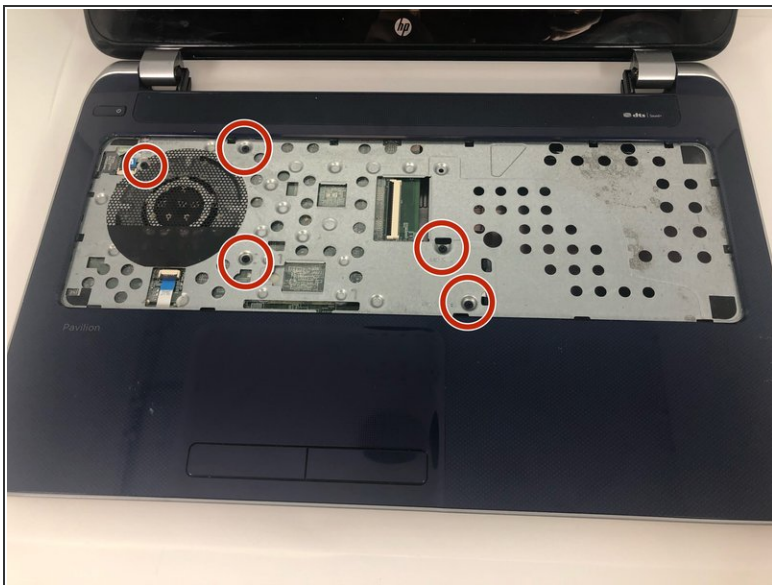
Step 9 — Hard Drive



i The battery and optical drive should be removed at this point in the process.

- Remove the ten 6 mm Phillips #1 screws.
- Remove the three 1 mm Phillips #000 screws.

Step 10



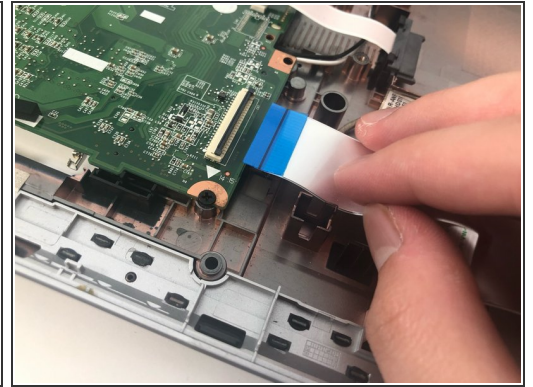
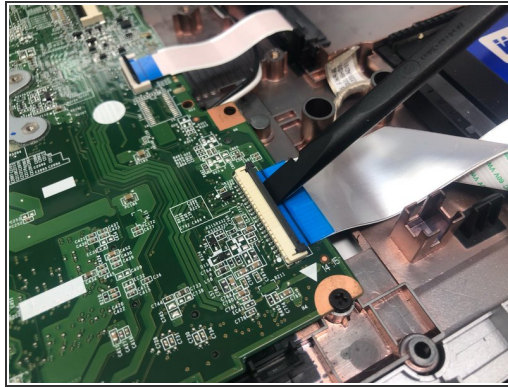
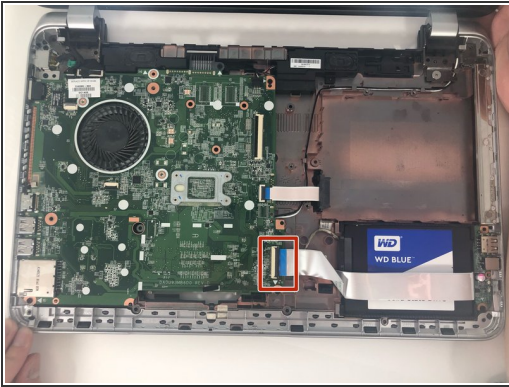
- Remove the five 2.5mm Phillips #1 screws.
- Use the spudger to unhinge the cable connectors. Use tweezers to complete removal.

Step 11



- Carefully use the iFixit opening tool to release the front panel.

Step 12



- Use the spudger to unhinge the daughterboard connector.
- Remove daughterboard connector.

Step 13



- Remove the 2.5 mm Phillips #1 screw and remove the daughterboard

Step 14



- Use the iFixit opening tool to remove the hard drive connector.
- Remove the hard drive by lifting the right side and pulling it out.

To reassemble your device, follow these instructions in reverse order.