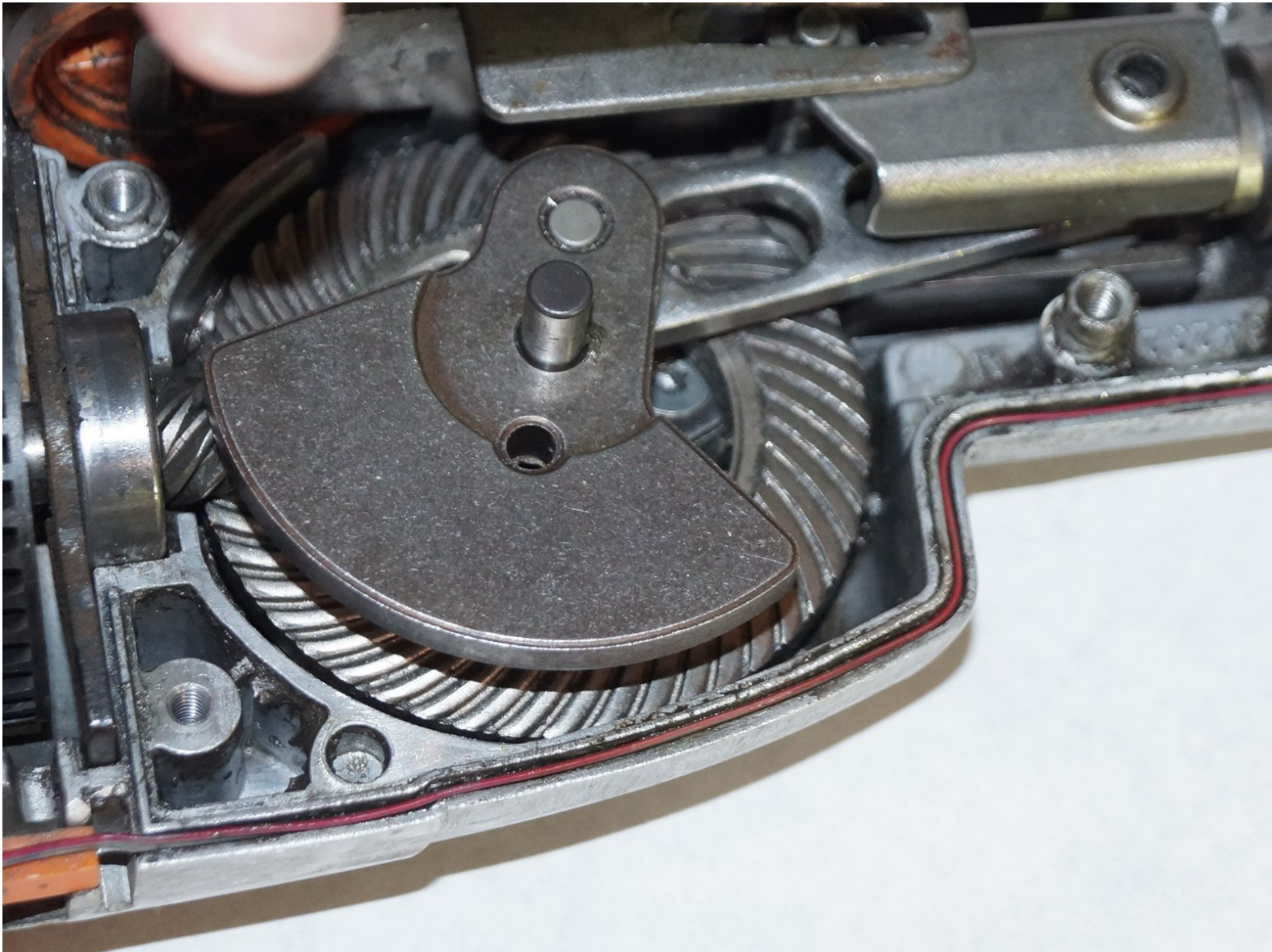




Ridgid GEN5X R8642 Gear Assembly Replacement

This guide will show you how to replace the gear assembly for the Ridgid GEN5X R8642.

Written By: Josh Wagoner



INTRODUCTION

This guide is to help users replace the gear assembly for the Ridgid GEN5X R8642 saw. For this guide you will need: a spudger, a T20 Torx Screwdriver, a Phillips screwdriver size J1, replacement gear assembly for Ridgid GEN5X R8642, and a good attitude.



TOOLS:

- [Spudger](#) (1)
- [JIS #1](#) (1)
- [T20 Torx Screwdriver](#) (1)



PARTS:

- [Ridgid GEN5X R8642 Gear Assembly](#) (1)

Step 1 — Gear Assembly



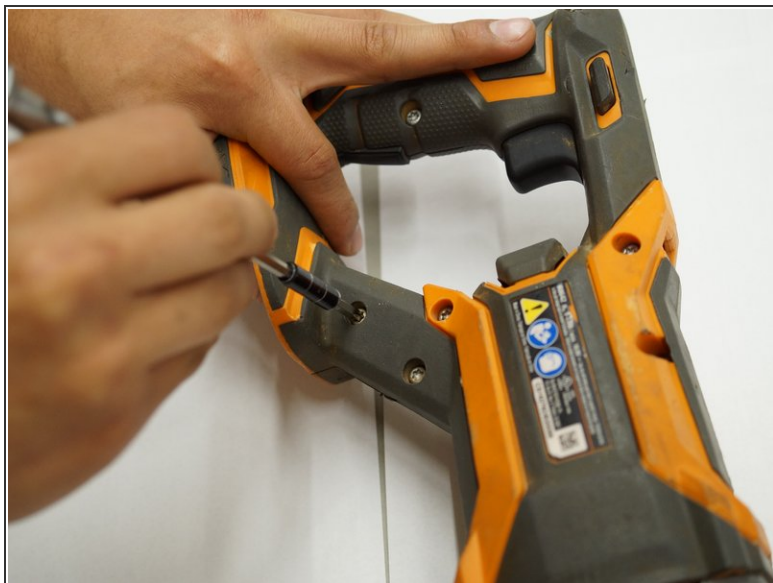
- Remove the plastic tab holding the handle cover in place by prying upward with the spudger until the tab pops off.

Step 2



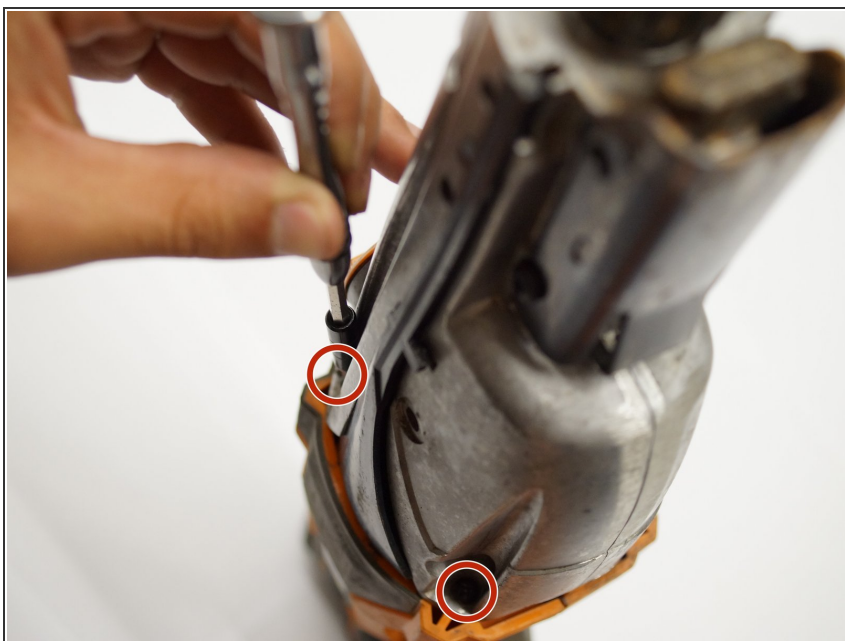
- Remove the handle cover by pulling it towards the front of the saw.
- ⓘ The grip can sometimes become stuck and may require a decent amount of force to remove.

Step 3



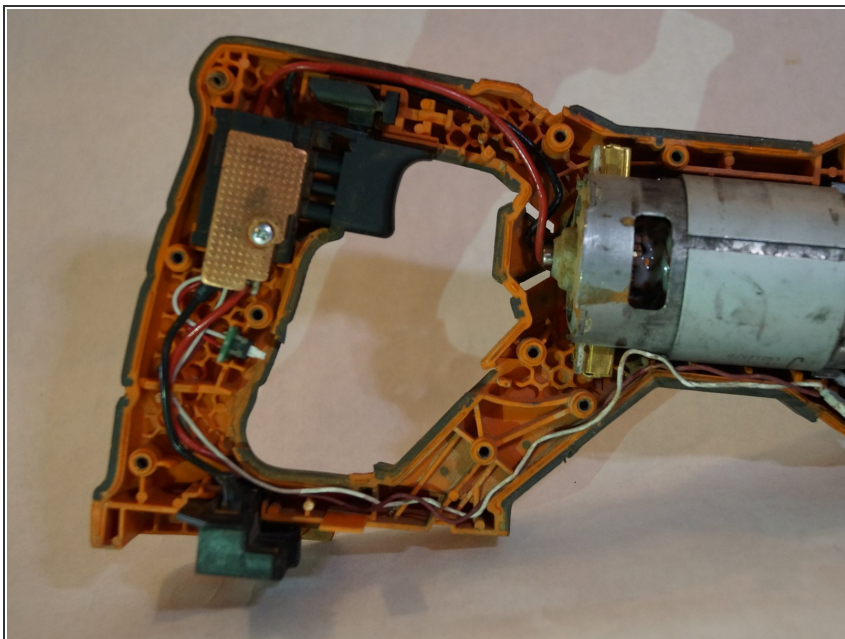
- Use a T20 Torx screwdriver to remove the nine M4 X 16mm screws from the plastic housing.

Step 4



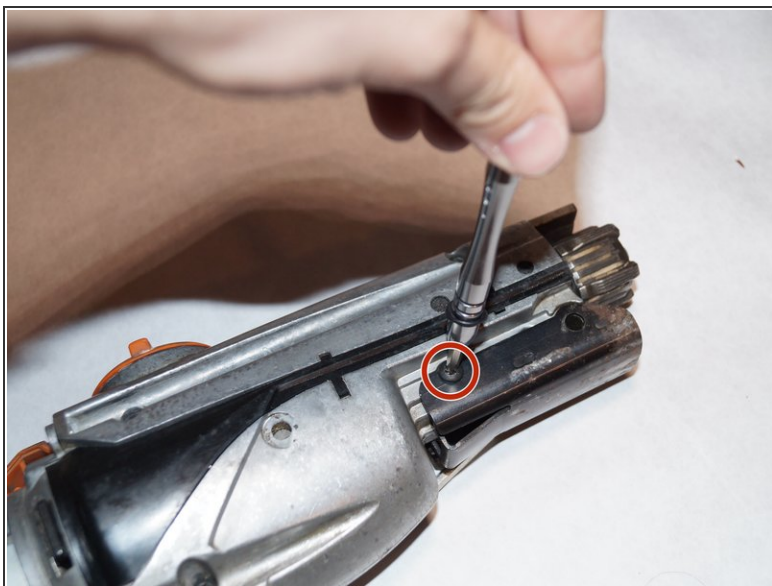
- Use a JIS #1 screwdriver to remove the two M4 x 25mm screws on both sides of the metal housing.

Step 5



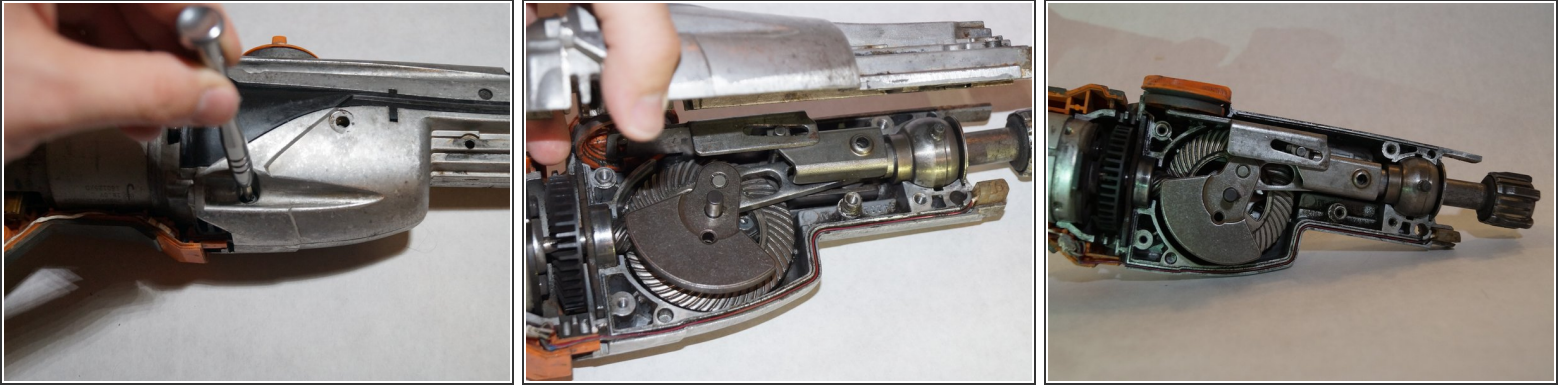
- Remove one half of the plastic housing using a spudger so that the internal system is exposed.

Step 6



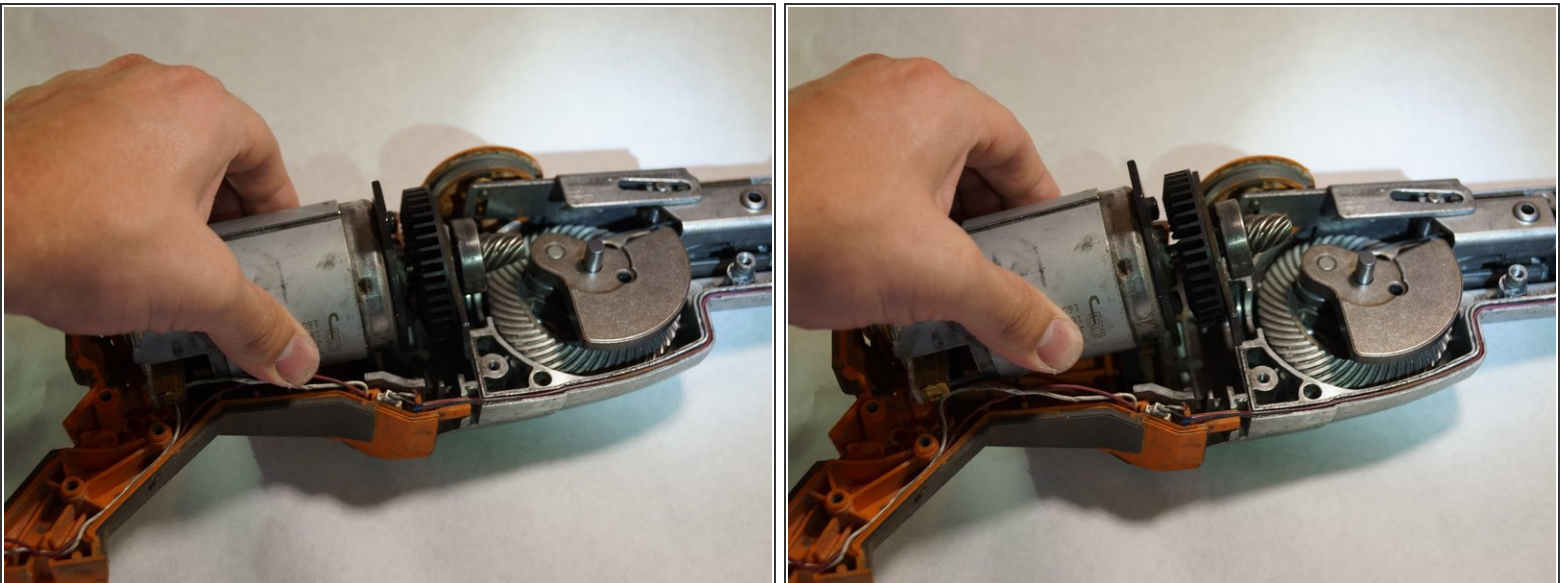
- Remove the one 16mm T20 screw that holds the grip support onto the saw.

Step 7



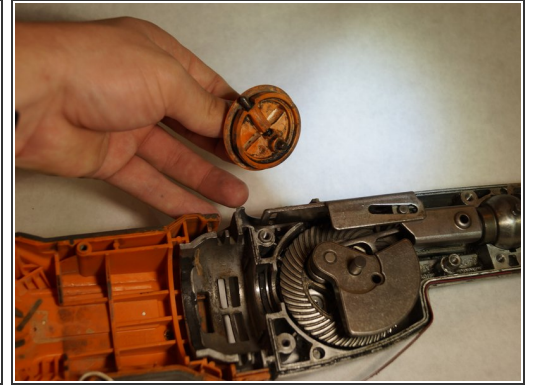
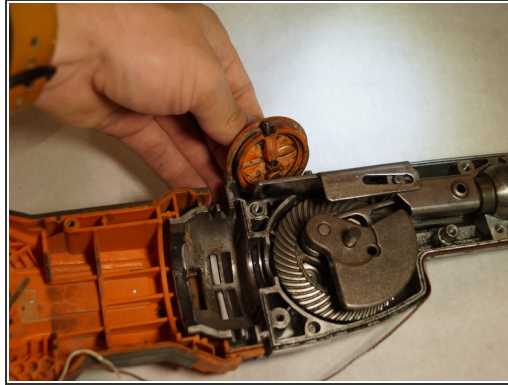
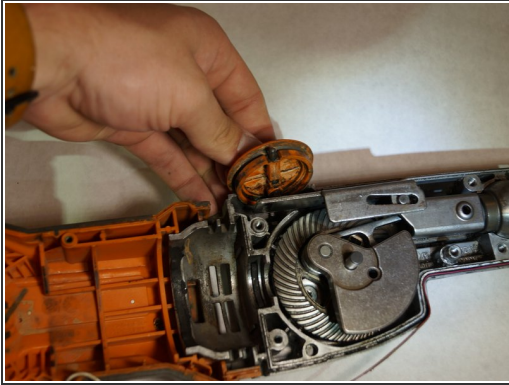
- Remove the five T20 Torx screws from the gear assembly cover and pull the cover off.

Step 8



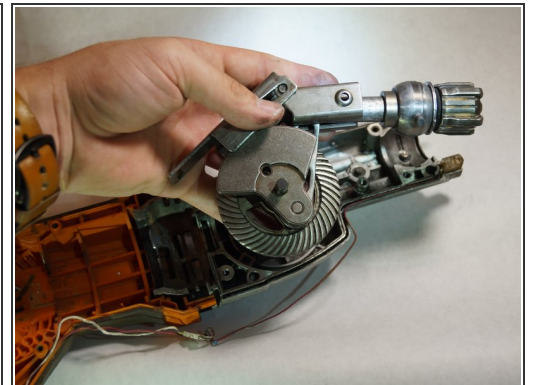
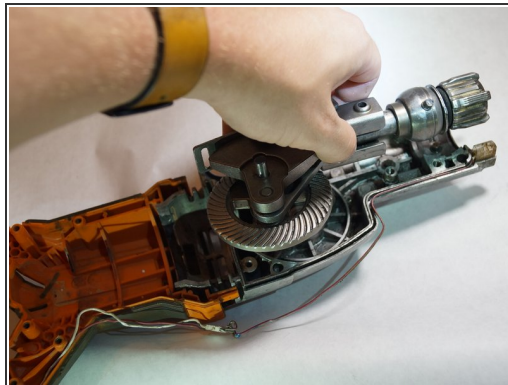
- Carefully remove the motor making sure not to harm any of the wires that are attached. Place motor gently out of the way.

Step 9



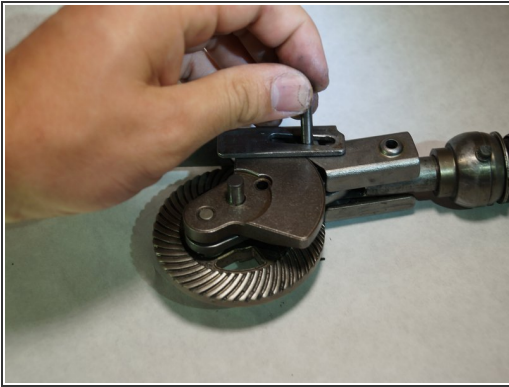
- Remove the orbital switch by pulling straight up on it.
- ⓘ Be careful to not lose the spring and pin that is inside of the switch.

Step 10



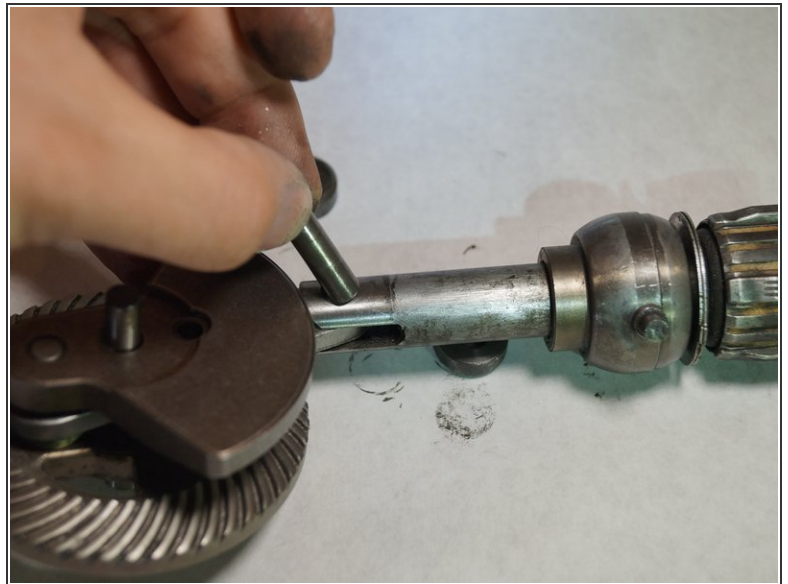
- Remove the gear assembly by pulling it straight up.

Step 11



- Pull the pin holding the metal guide housing in place.
- Slide the metal guide housing back off the gear assembly.

Step 12



- Remove the guide bushing by pulling up on it.
- Then slide the pin out that holds the gear assembly and blade clamp assembly.

Step 13



- Slide the blade clamp assembly off the gear assembly.

To reassemble your device, follow these instructions in reverse order.