

Written By: Lucas Fisher



## INTRODUCTION

It is advised to proceed with caution when carrying out this procedure. Damage to the sensitive electronic components may occur.

---

### TOOLS:

- [Metal Spudger](#) (1)
  - [Phillips #0 Screwdriver](#) (1)
-

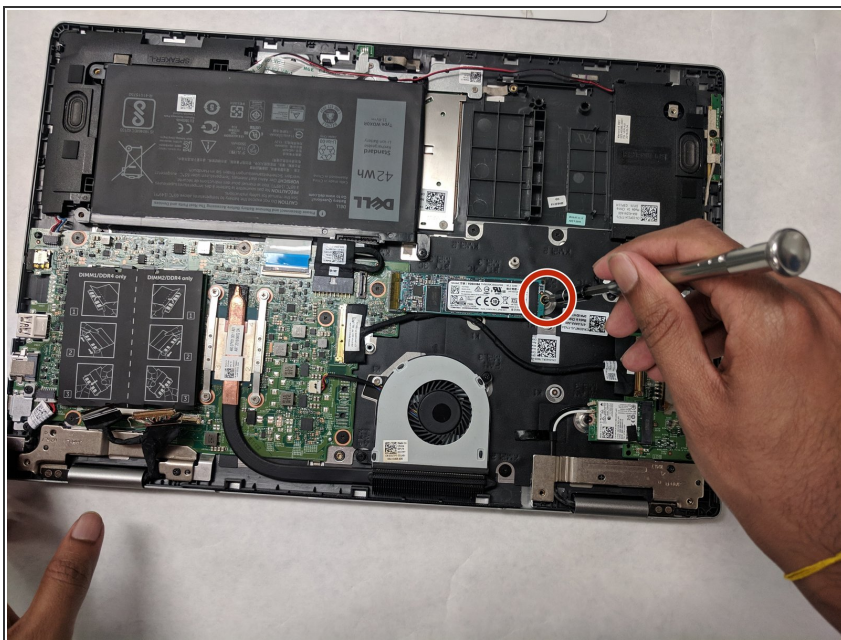


## Step 1 — Back Cover



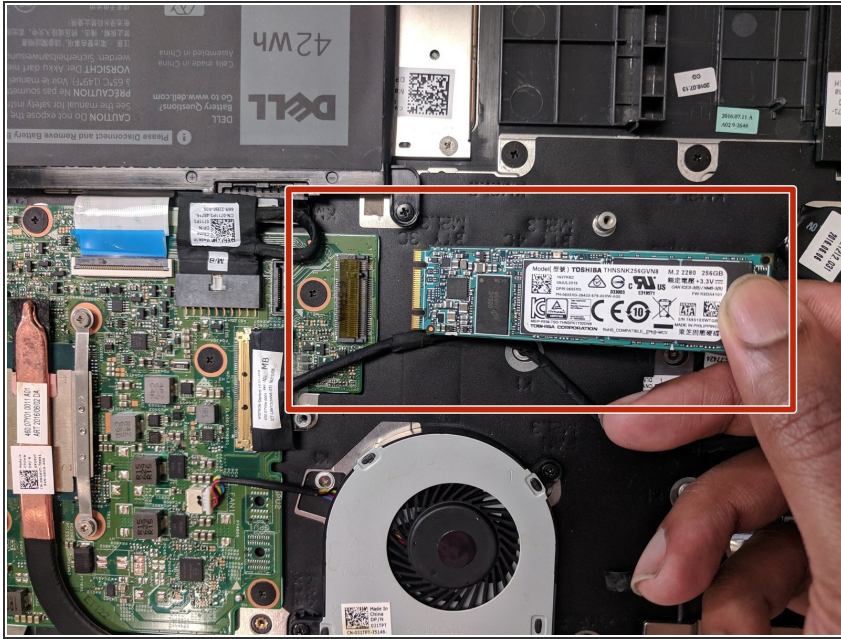
- Remove the (10) P58F black screws on the back cover using the Phillips #0 screwdriver.
- After removing the screws, remove the back cover using a plastic or metal spudger.

## Step 2 — Solid State Drive



- Unscrew the 3.7mm screw that attaches the solid state drive with the Phillips #0 screwdriver.

## Step 3



- Gently remove the solid state drive.

To reassemble your device, follow these instructions in reverse order.