



# LG Watch Sport Band Teardown

After one of my straps broke I decided to slice them open and see where exactly the antennas were located... FOR SCIENCE!

Written By: dragon788



# INTRODUCTION

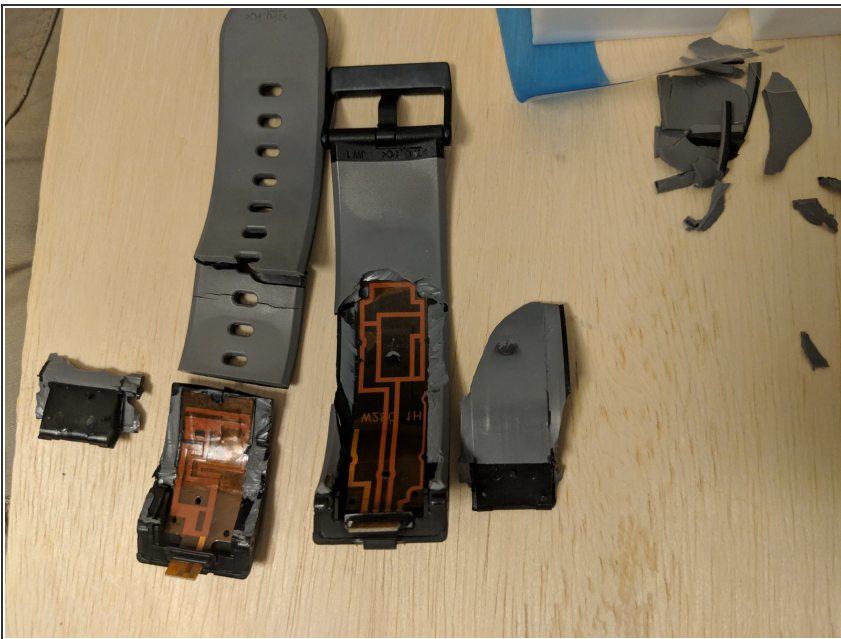
After one of my straps broke I decided to slice them open and see where exactly the antennas were located... FOR SCIENCE!

## Step 1 — Remove the 4x T5 torx screws and pop off the bands



- Without the iFixit Manta kit I don't think I would have gotten them off, because the bit on the tool that was sent with the replacement straps stripped almost immediately.

## Step 2 — Destruction!!!



- Be smarter than me and use a sharp X-acto knife or fresh box cutter and a comfortable set of pliers when

---

cutting into the straps, not a dull  
scissors or pocket knife.

---

To reassemble your device, follow these instructions in reverse order.