



# iPad ClamCase

Written By: Izmet Barranco



---

## INTRODUCTION

This is the teardown for a Clamcase for iPad 2.

---

### TOOLS:

- [T9 Torx Screwdriver](#) (1)
  - [T6 Torx Screwdriver](#) (1)
-

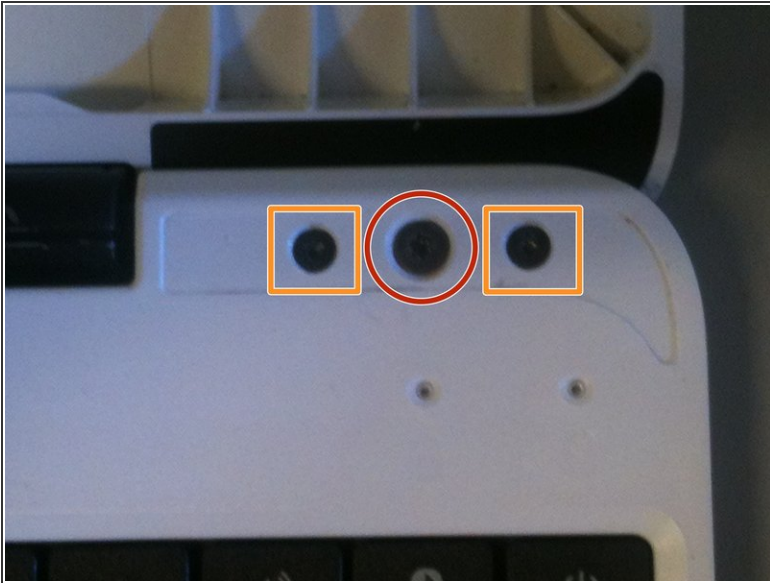
## Step 1 — iPad ClamCase



**i** You can skip the first 2 steps if you don't want to detach the upper and keyboard covers from each other.

- Open the case and unpeel the 2 black stickers in the top corners of the keyboard.
- This will reveal the 6 screws that attach the upper cover to the keyboard cover.

## Step 2



- Use the T9 Torx screwdriver to unscrew the 2 bigger screws in the middle of each side.
- Use the T6 Torx screwdriver to unscrew the remaining 4 screws.



### Step 3



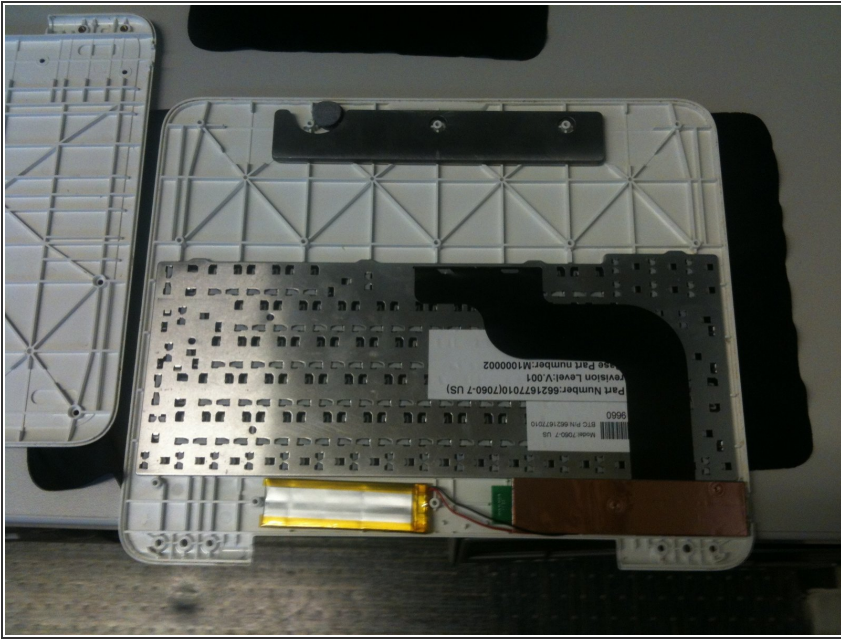
- Turn the keyboard cover over so the bottom is facing up. Manually remove the thin black covering that is attached to the bottom.
- Be patient, the thin black covering might be really stuck to the bottom.

### Step 4



- Once the thin black covering is removed, you will see 15 screws.
- Use the T6 Torx screwdriver to remove the screws.

## Step 5



- Once the screws are removed, lift off the bottom panel to access the keyboard and battery.

## Step 6



- You are done.