



How to Fix a Loose Cabinet Knob

Have you ever opened a cabinet/dresser and...

Written By: Sandra William



INTRODUCTION

Have you ever opened a cabinet/dresser and noticed that the knob is wobbling out of place? This problem makes the knob difficult to grip enabling the access to what's behind the cabinet/dresser. Loose knobs are likely to eventually fall off drawers or cabinets. However, it can leave you in an inconvenient situation making it impossible to carry out daily tasks. With this guide I will provide descriptive instructions that will make your knob useful again.

TOOLS:

Phillips #0 Screwdriver (1)

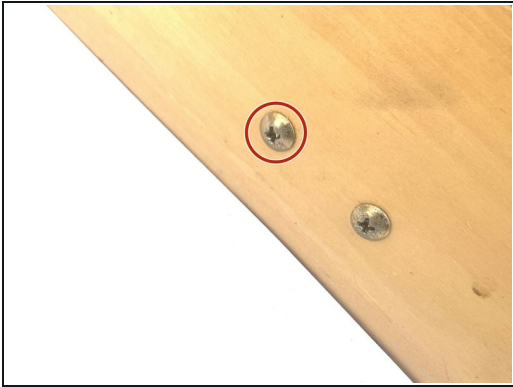
Nail washer (1)

Step 1 — How to Fix a Loose Cabinet Knob



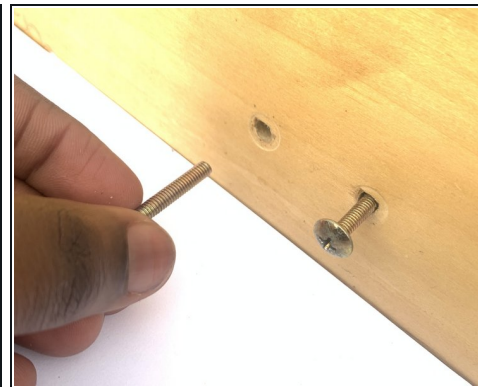
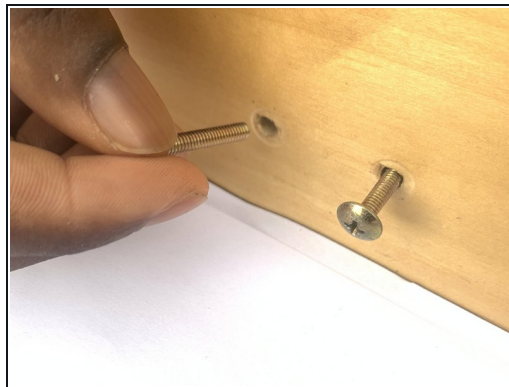
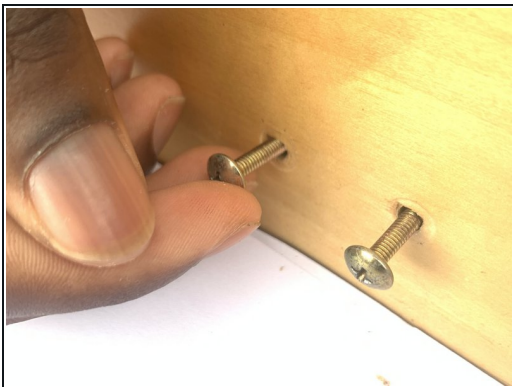
- Remove the drawer from the cabinet/dresser.
- ⓘ Do this so you have enough room to work with.

Step 2



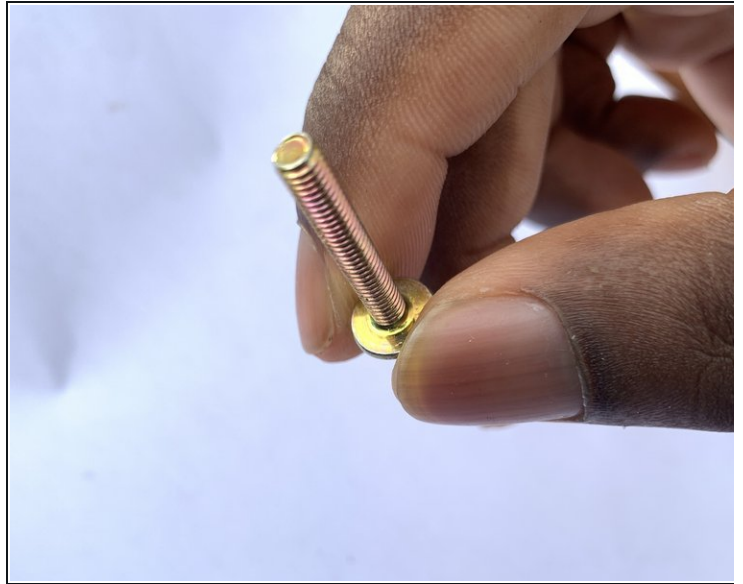
- Take your screw driver to remove the screw from the knob.
- Place the screwdriver on the screw turning the screwdriver counter clock wise to untighten the screw from the knob.
- ① Knowing that every cabinet and drawers are different will determine how many screws you will need to untighten for this repair.

Step 3



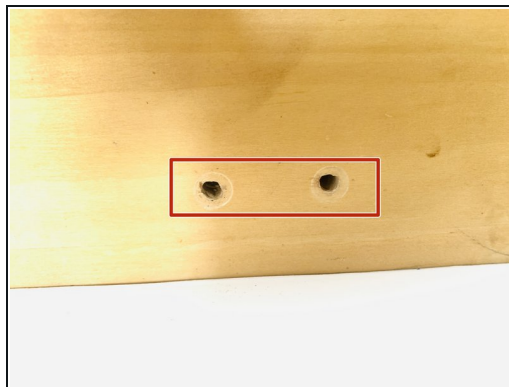
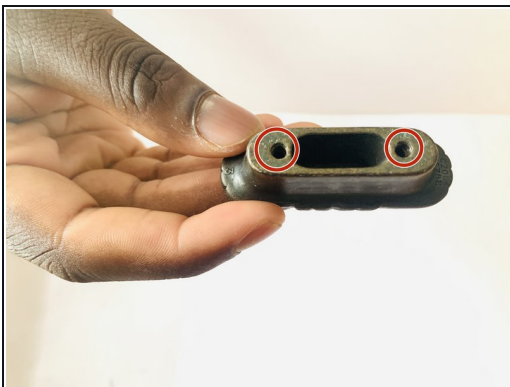
- Next, you will then remove the screw from the desired hole.

Step 4



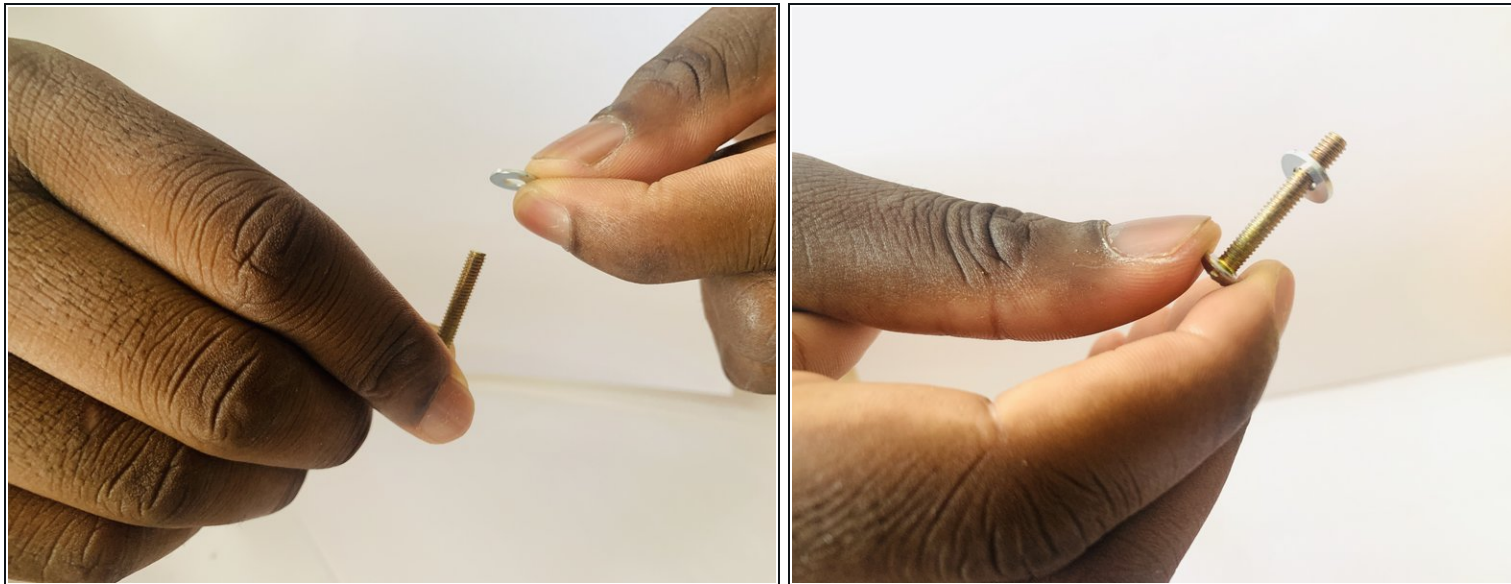
- Inspect the threading of the screw to see whether the screw is still in good condition or if there is any jagged threading on the body portion of the screw.
- ① If your screw does not appear to be in good condition, then you would have to purchase another screw. Remember to take the knob with you to the store so that you can get the correct screw for that knob.

Step 5



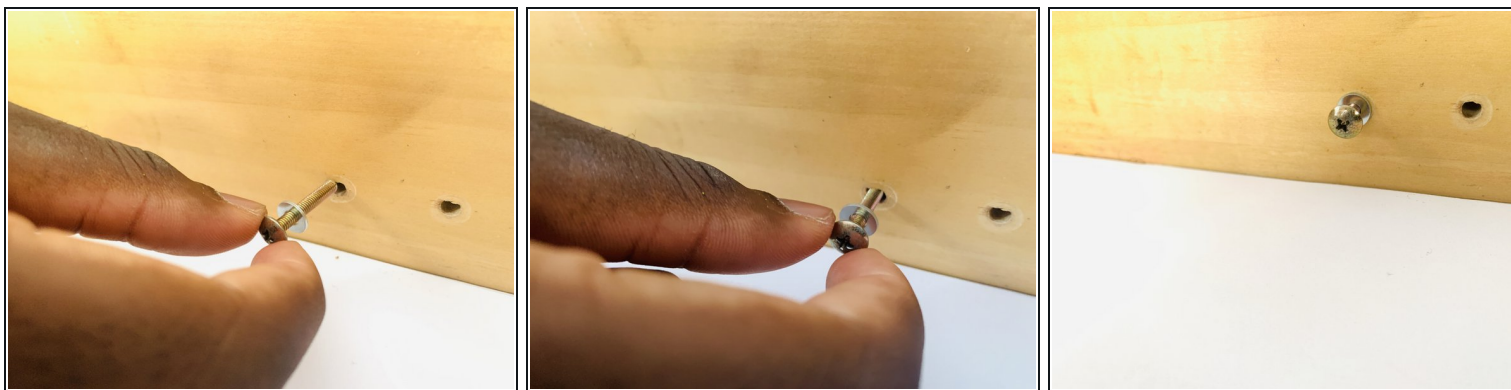
- Inspect the holes within the knob and drawer.
- ① You would perform this step to see if there is any extra debris that was left behind.

Step 6



- Place washers on the screw.

Step 7



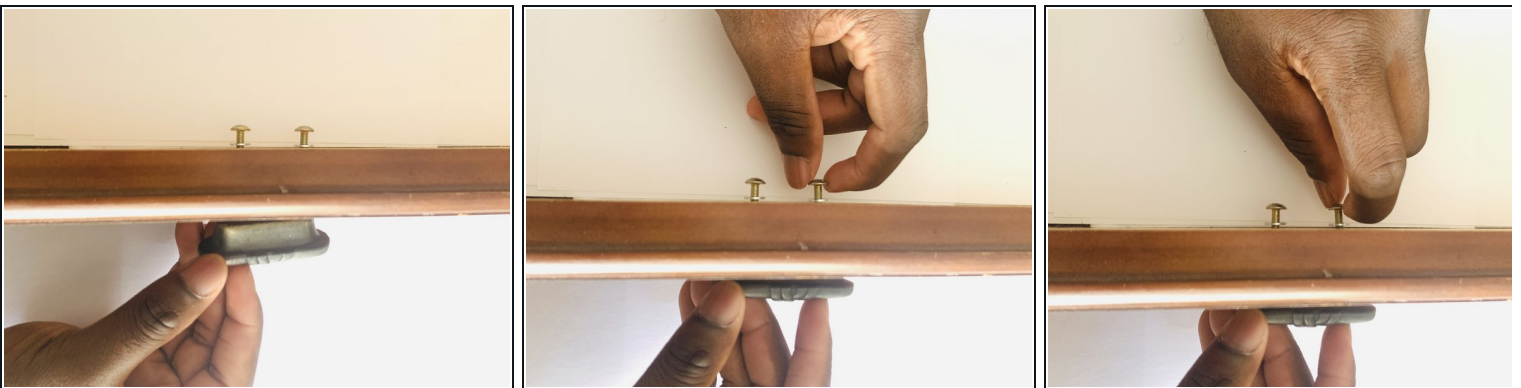
- Insert the screw in the desired hole.

Step 8



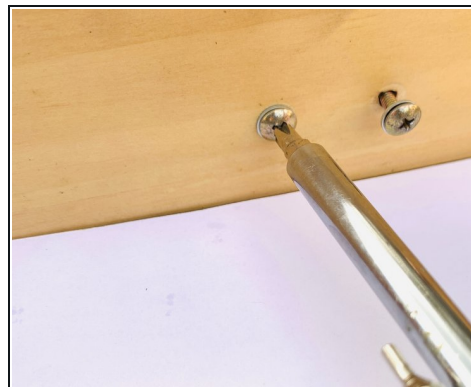
- Place the knob in front of the cabinet/drawer where the screw would be in place.

Step 9



- Hand tighten the screw on the knob.
- ① Since you are holding the screw with your left hand and the knob with your right all you have to do is turn the screw clockwise, so the knob can tighten on the screw.
- ① Make sure to hold the knob in place while performing this step.

Step 10



- Use your screwdriver to finish tightening the screw in place.
- ❗ Remember to keep the knob in place while completing this step.

Step 11



- Check to see if the knob is tight and secure.

Step 12



- Place the drawer back in the cabinet/dresser.
- Congratulations! You fixed your loose cabinet knob.

To reassemble your device, follow these instructions in reverse order.