



Google Pixel 2 Display Adhesive Replacement

Replace the adhesive under the edges of a Pixel 2 screen.

Written By: Adam O'Camb



INTRODUCTION

This repair guide was authored by the iFixit staff and hasn't been endorsed by Google. Learn more about our repair guides [here](#).

Use this guide to apply replacement adhesive to your Pixel 2's display.

Before you begin, you should already have removed the Pixel 2's display. Detailed instructions for removing the display can be found [here](#).



TOOLS:

- [Tweezers](#) (1)
- [Spudger](#) (1)



PARTS:

- [Google Pixel 2 Display Adhesive](#) (1)

Step 1 — Display Adhesive

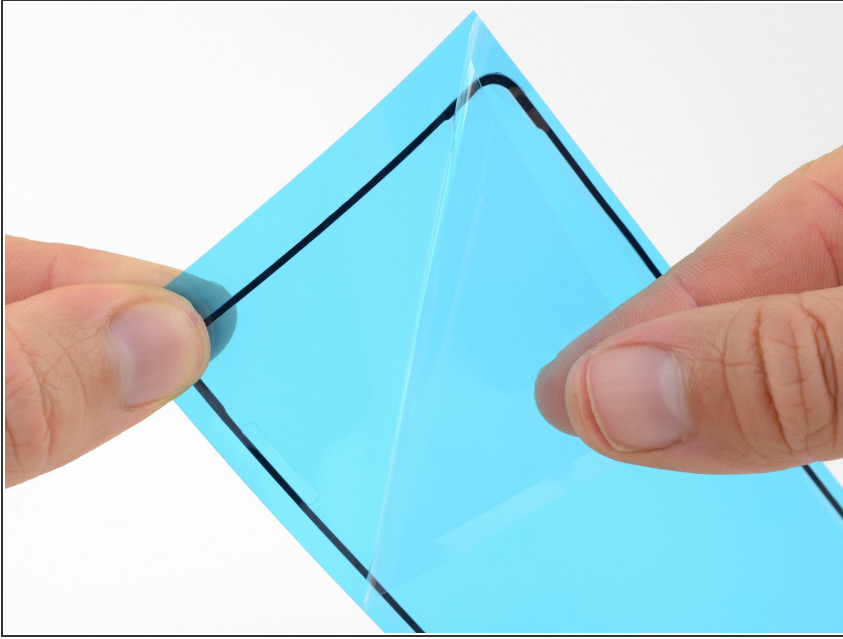


- Remove any trace of the old adhesive from the Pixel 2's case.
- If you're reinstalling your existing display, be sure to remove any remaining adhesive from the back of your display as well.

⚠ Take special care to remove any small glass fragments.

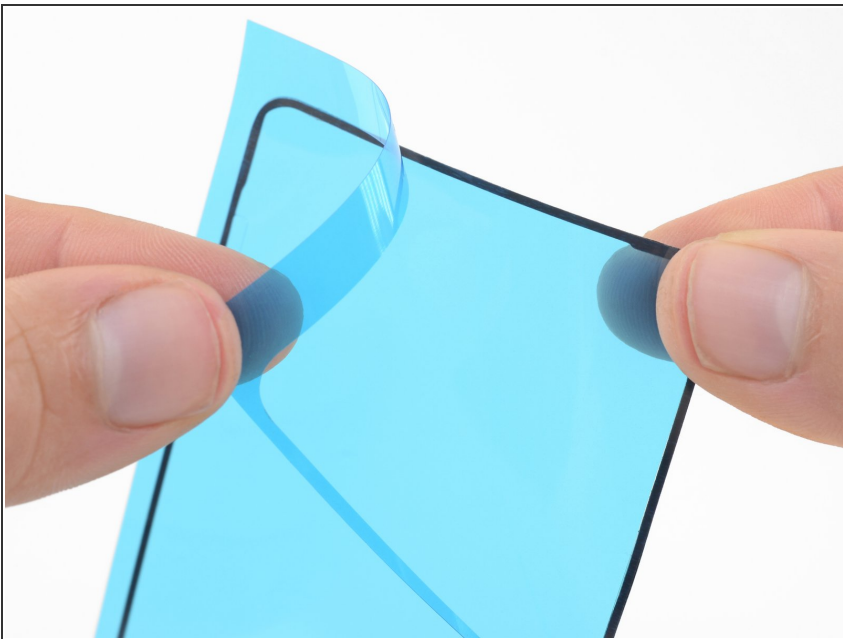
- After removing all traces of glue and glass, clean the adhesion areas with high concentration isopropyl alcohol (at least 90%). This will ensure a better seal for the display.
- i** If your new display doesn't come with speaker grilles or a front-facing camera bracket, make sure to [install those](#) before applying display adhesive.

Step 2



- Peel the clear backing off of the replacement adhesive.

Step 3



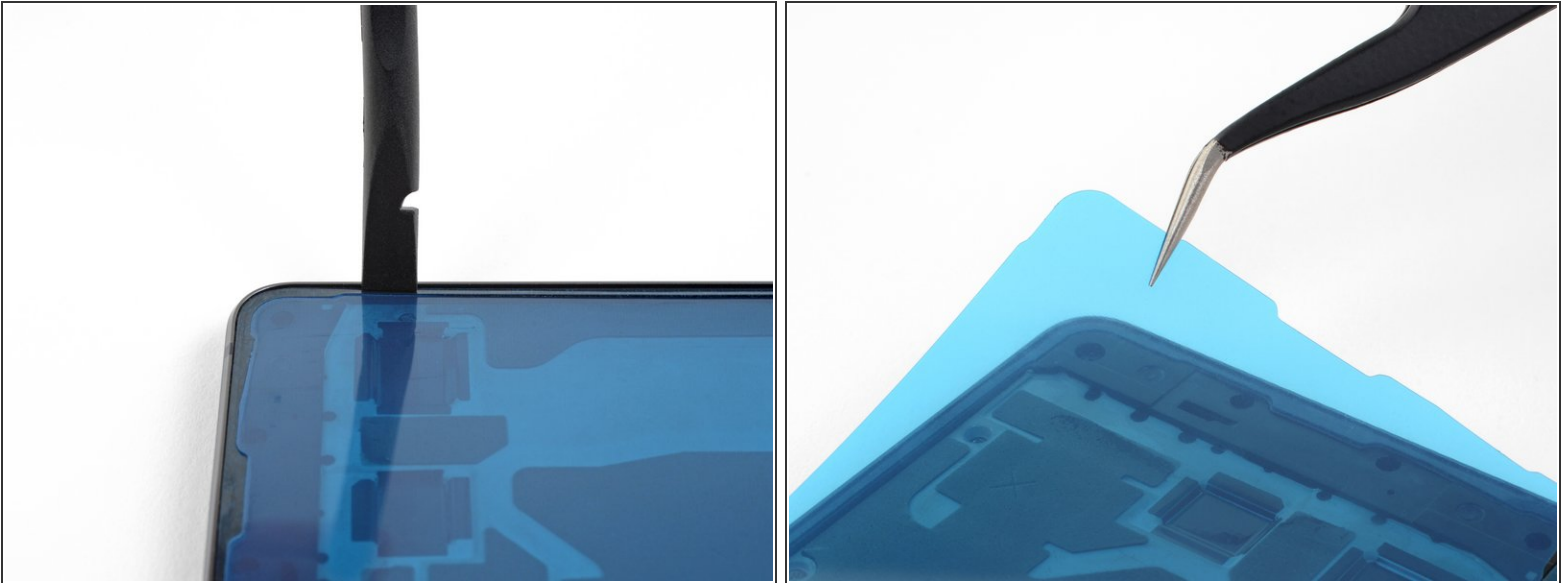
- ⓘ There are perforations along the inner and outer edges of the adhesive strip.
- Carefully tear along the perforations to separate the outer portion of the adhesive backing from the adhesive strip.
- ⚠ Be very careful not to tear the adhesive, the white backing, or the blue backing underneath the adhesive. Only remove the blue plastic surrounding the outside edge of the adhesive strip.

Step 4



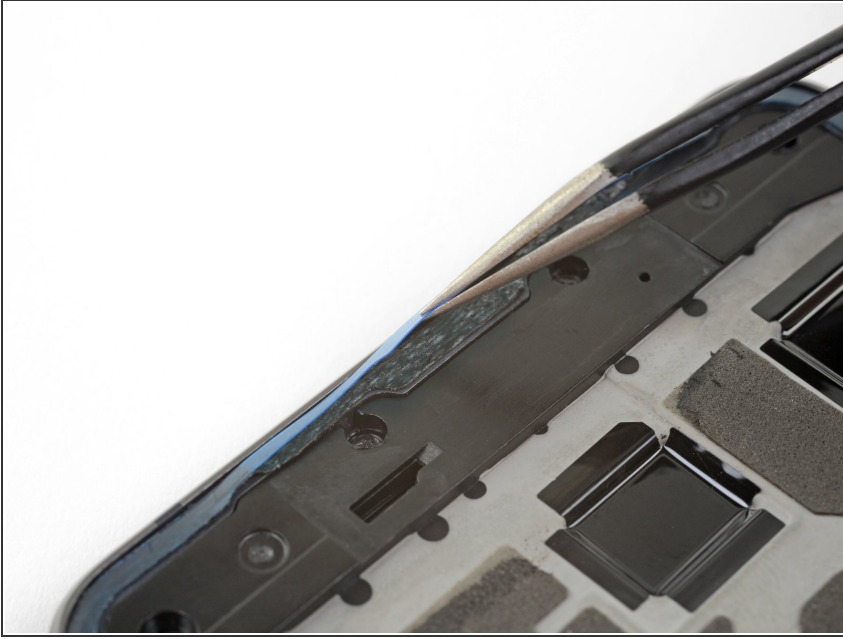
- Peel away the white backing, exposing one side of the adhesive strip.
- Carefully place the adhesive strip on the phone case, with the exposed side down, and the blue backing up.
- Start at the bottom of the case, lining up the contours along the bottom edge of the adhesive with those of the case. Then lay down the rest of the adhesive.

Step 5



- With the adhesive lined up with the edges of the case, use your finger or a spudger to press the adhesive strip down against the case.
- Use a pair of tweezers to remove the inner portion of the blue backing. It may be necessary to hold the adhesive down with a spudger to avoid pulling up the adhesive strip.
- ⓘ Be very careful and avoid tearing or removing the adhesive.

Step 6



- Use tweezers to peel away the blue backing over top of the adhesive without peeling the adhesive off of the case.
- ⓘ If the adhesive starts to come off of the case as you remove the backing, you may need to slide a spudger in between the adhesive and the backing to hold the adhesive down.

Repair didn't go as planned? Check out our [Answers community](#) for troubleshooting help.