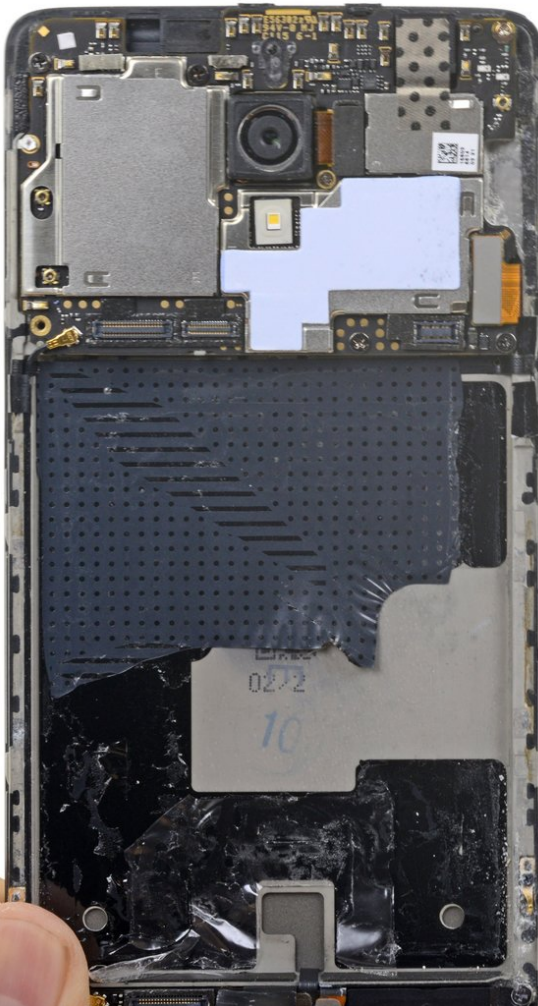




OnePlus 3 Battery Replacement

Remove and replace a dead or aging battery for a OnePlus 3.

Written By: Arthur Shi



INTRODUCTION

Follow this guide to remove the OnePlus 3's battery. The hardest part of the guide is getting the frame clips free.

If your battery is swollen, [take appropriate precautions](#).

For your safety, discharge your battery below 25% before disassembling your phone. This reduces the risk of a dangerous thermal event if the battery is accidentally damaged during the repair.

Note: Make sure the battery is the correct model before starting this repair. OnePlus 3 (BLP613) and OnePlus 3T (BLP633) are not interchangeable.



TOOLS:

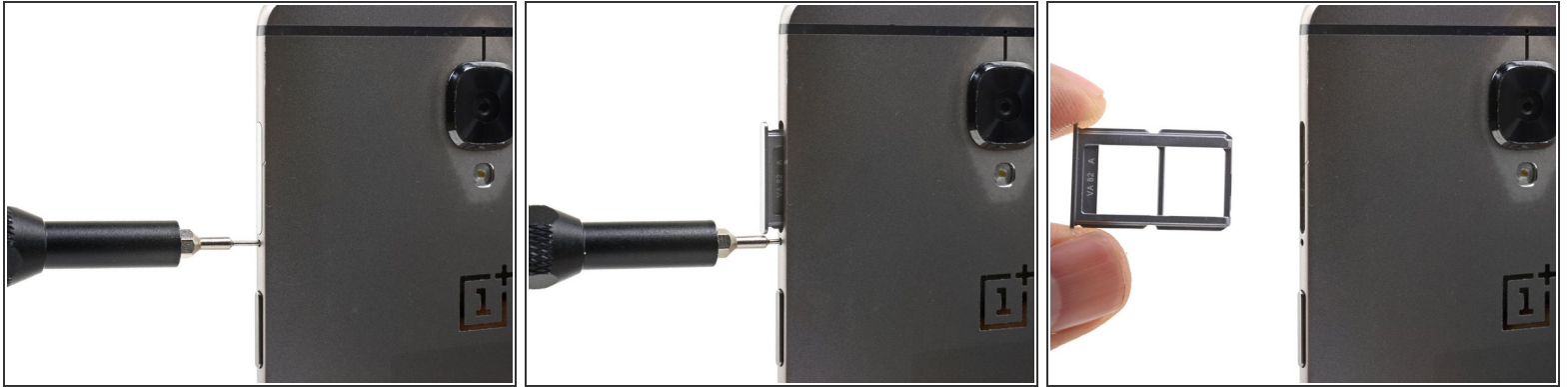
- [SIM Card Eject Tool](#) (1)
- [T2 Torx Screwdriver](#) (1)
- [Suction Handle](#) (1)
- [Phillips #00 Screwdriver](#) (1)
- [Spudger](#) (1)
- [iFixit Opening Tools](#) (1)



PARTS:

- [OnePlus 3 Replacement Battery](#) (1)

Step 1 — SIM Card Tray



- Insert a SIM eject tool, bit, or straightened paperclip into the hole located between the SIM card slot and the power button.
 - Press firmly to eject the SIM card tray.
- ☒ During reinstallation, make sure that the SIM card tray is properly oriented. It fits in only one direction.

Step 2 — Back Cover



- Remove the two 2.6 mm T2 screws from the bottom edge of the phone.

Step 3



⚠ There is a high risk of damaging the display panel if this opening procedure is improperly followed.

i The following three steps show how to pry the rear case from the plastic frame. Read through the steps first before attempting the procedure.

⚠ There are two different seams between the screen and the body of the phone:

- *Display panel seam*: This seam is part of the display assembly. **Do not pry** at this seam, or you will separate and damage the display panel.
- *Frame seam*: This is where the plastic frame meets the back cover. It is recessed into the back cover. **Only pry at this seam.**
- There are fourteen clips that hold the frame against the rear case. Be aware of their location as you pry the back cover off in the following steps.

Step 4



- ⓘ As you work, try not to accidentally power on the phone. If you do, turn the phone off before resuming disassembly.
- Place a suction cup near the bottom edge of the display.
- Pull on the suction cup with strong steady force.
- Press the edge of an opening tool straight into the frame seam near the suction cup until the edge wedges between the plastic frame and the back cover's lip.
- ⓘ Due to tight tolerances, this will take substantial force. Using a new opening tool with an unmarred edge will help with this step.
- ⚠ Do not use metal tools, as they will most likely crack the screen.

Step 5



- Once the opening tool's edge is wedged in position, carefully slide the tool along the bottom edge of the phone.
- Carefully guide the opening tool around the left corner of the phone while keeping the tool's edge within the seam.

Step 6



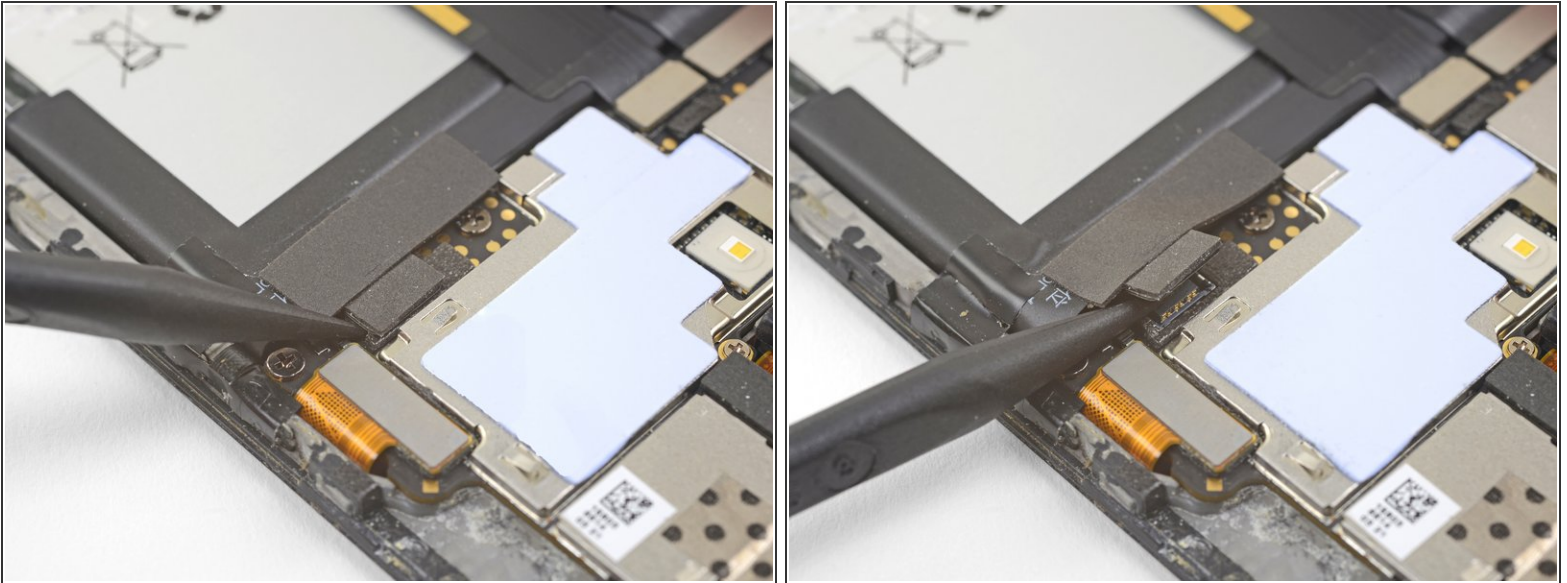
- Continue sliding the opening tool along the long edge, releasing the clips along the way.
- ⓘ The last clip in the top-left corner near the alert switch is recessed and can be difficult to release. Take your time and use the flat end of a spudger or an opening pick to help.

Step 7



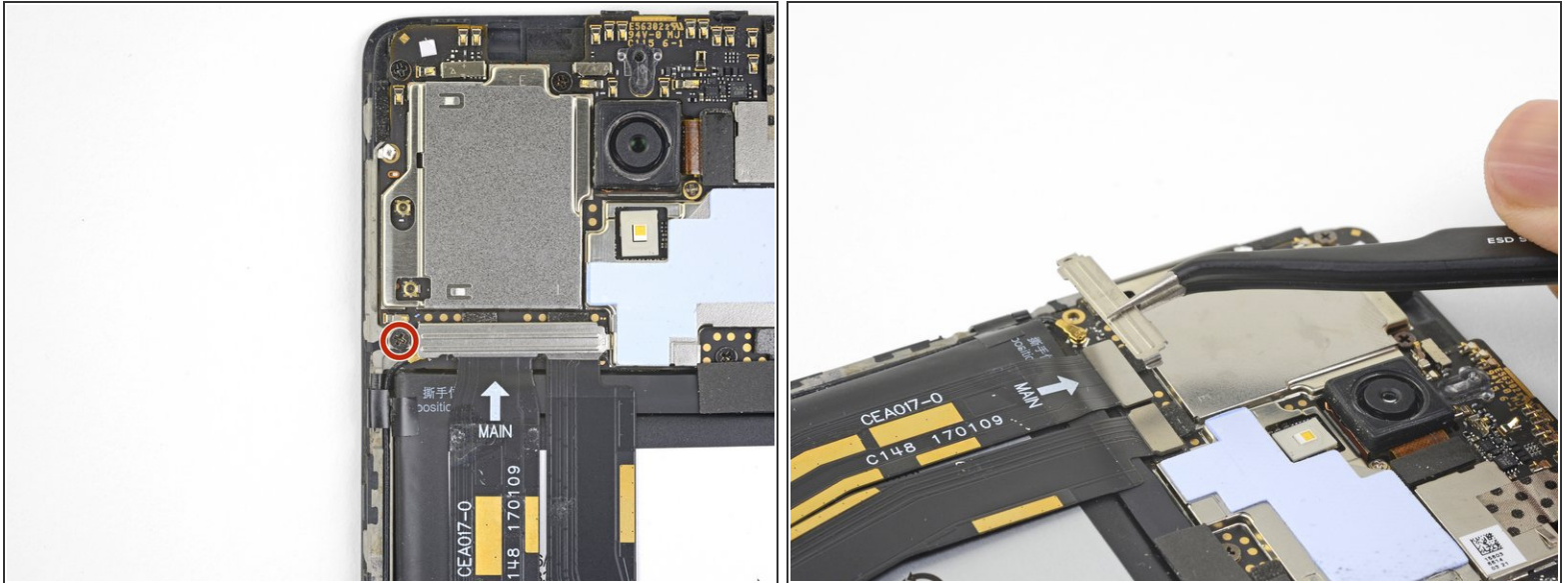
- With the bottom and left edge of the phone freed, gently wiggle the frame to release the top and right edge clips.
 - Lift the screen up and remove it.
- ✦ During reassembly, pause here to test your phone's functionality before securing the back cover.
- ✦ To reinstall the back cover:
- [Align the top edge of the frame](#) to the back cover and ensure that the top clips slip into place.
 - [Squeeze along the long edges of the phone](#) to snap the remaining clips into place.

Step 8 — OnePlus 3 Battery Disconnect



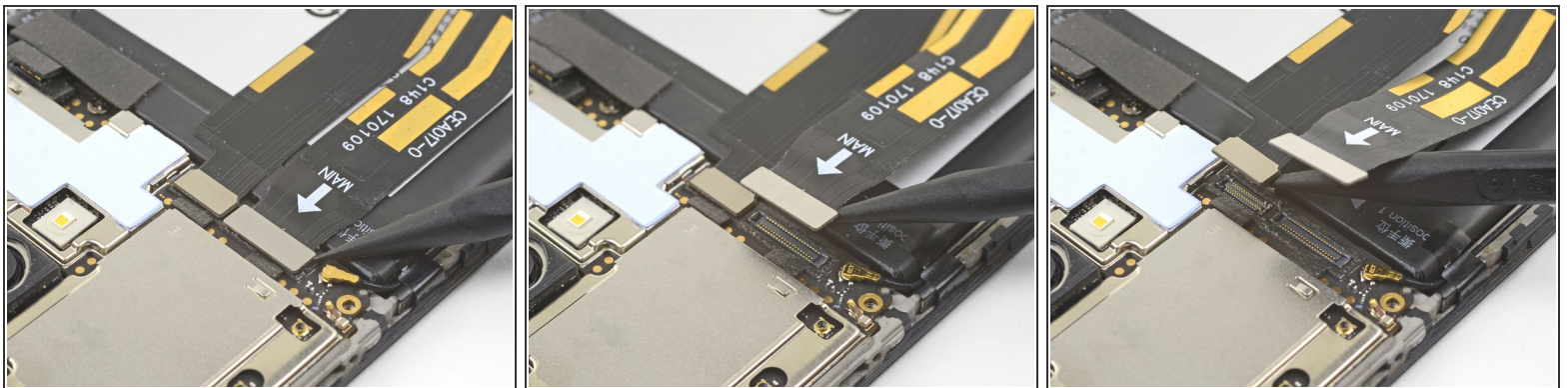
- Use the point of a spudger to pry up and disconnect the battery connector from its socket, located above the top right corner of the battery pack.
- Bend the connector away from the socket to prevent accidental contact.
- ⓘ To re-attach [press connectors](#) like this one, carefully align and press down on one side until it clicks into place, then repeat on the other side. Do not press down on the middle. If the connector is misaligned, the pins can bend, causing permanent damage.

Step 9 — OnePlus 3 Interconnect Cable Disconnect



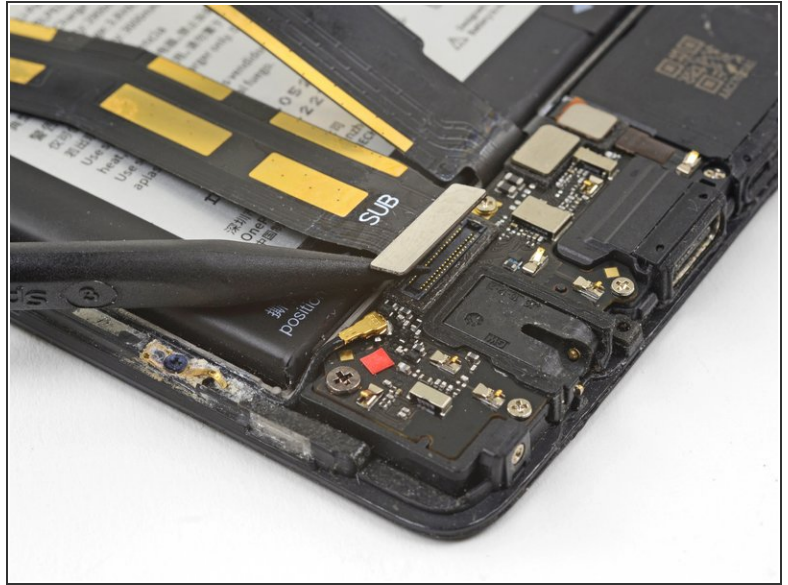
- Remove the 3 mm Phillips screw securing the cable bracket.
- Remove the cable bracket.

Step 10



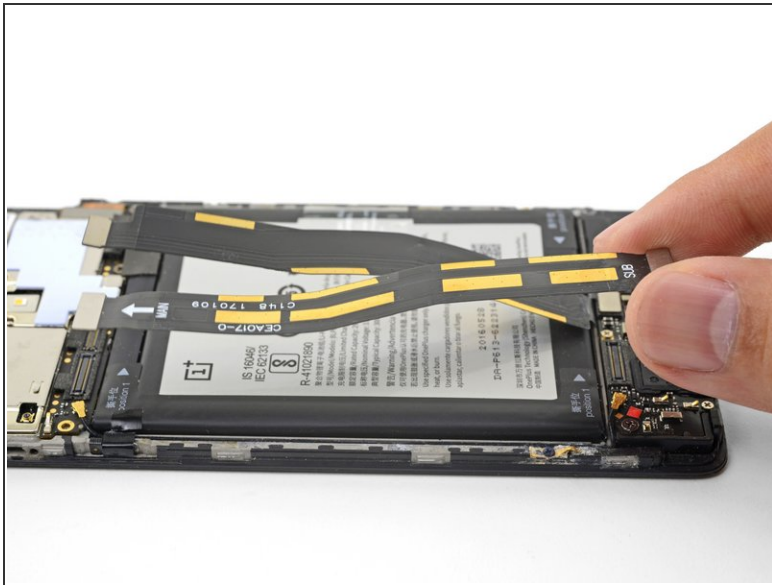
- Use the point of a spudger to pry up and disconnect the interconnect flex cable from the motherboard, which is located above the battery.
- Repeat the process to disconnect the daughterboard flex cable from the motherboard.

Step 11 — Battery




- Use the point of a spudger to pry up and disconnect the interconnect flex cable from the daughterboard, which is located below the battery.

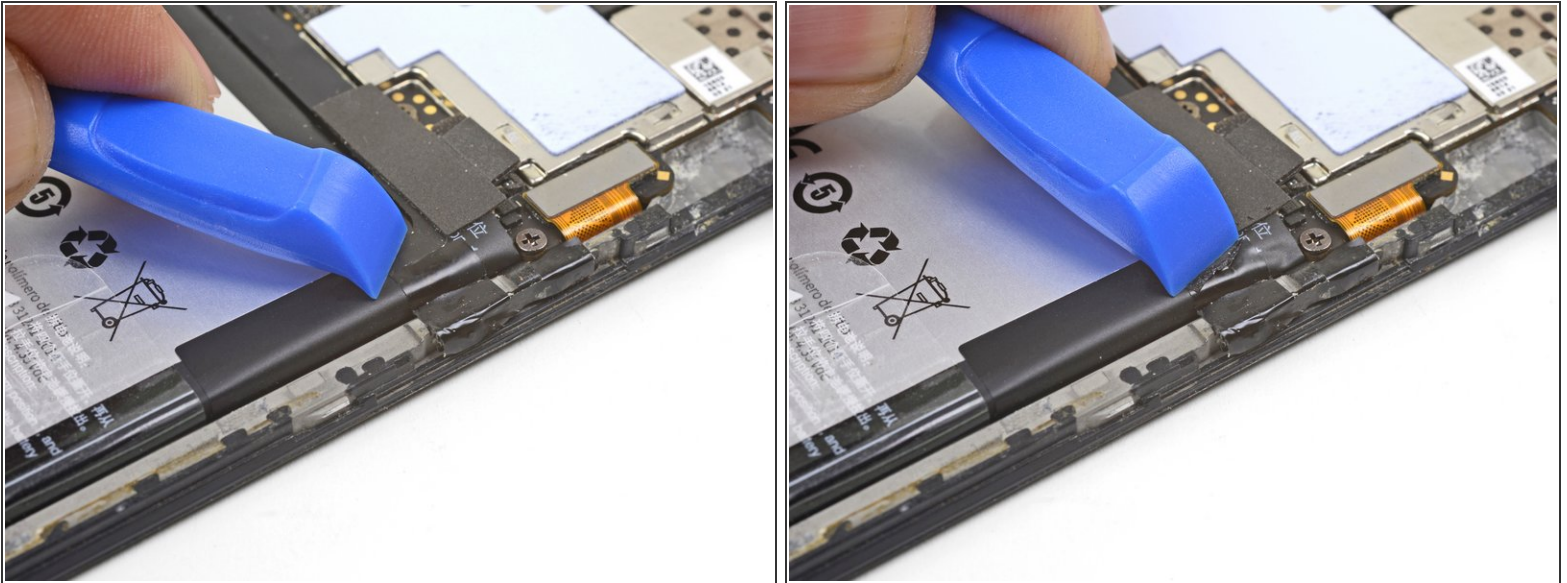
Step 12



- Remove the interconnect flex cable.
- Carefully bend the still-attached daughterboard flex cable away from the battery.

 During reassembly, make sure that the **Main** labeled connector connects to the motherboard. The **Sub** connector will fit the motherboard socket but it will cause your phone to malfunction.

Step 13



- Use the opening tool to push any adhesive tape holding the battery to the edge of the plastic frame. There should be at least one on each battery side.
- ⓘ Be careful not to puncture the battery pack with the tool.

Step 14



- Peel the clear pull tab up from the battery.

Step 15



- Brace the phone frame against the table.
- Using a strong, steady force, pull the clear pull tab upwards until the battery loosens from its recess.
- ⓘ If you are having a hard time, apply some high concentration (over 90%) isopropyl alcohol along the battery seam to help weaken the adhesive.
- Swing the battery completely out of its recess and pull off of any remaining adhesive.

Step 16



- Remove the battery and any remaining adhesive residue on the frame.
- ⚠ Do not reuse the battery after it has been removed. Reusing a battery that is bent or otherwise stressed is a potential safety hazard.
- ℹ If your replacement battery did not come with a pull tab, you can transfer the old tab to the new battery to help with subsequent replacements.
- ✦ While installing a new battery, *temporarily* connect the battery to the phone to ensure proper battery alignment.
- ✦ To install a new battery onto an existing frame, remove some adhesive strips from a pre-cut adhesive card, or cut some strips from a roll of [Tesa tape](#), and stick them [in the highlighted area](#).
- ✦ If you are installing a battery onto a new screen and digitizer assembly, be sure to [peel off the orange adhesive liner](#) to expose the battery adhesive for the new battery.

To reassemble your device, follow these instructions in reverse order.

For optimal performance, calibrate your newly installed battery: Charge it to 100% and keep charging it for at least 2 more hours. Then use your device until it shuts off due to low battery. Finally, charge it uninterrupted to 100%.

Take your e-waste to an [R2 or e-Stewards certified recycler](#).

Repair didn't go as planned? Check out our [OnePlus 3 Answers community](#) for troubleshooting help.