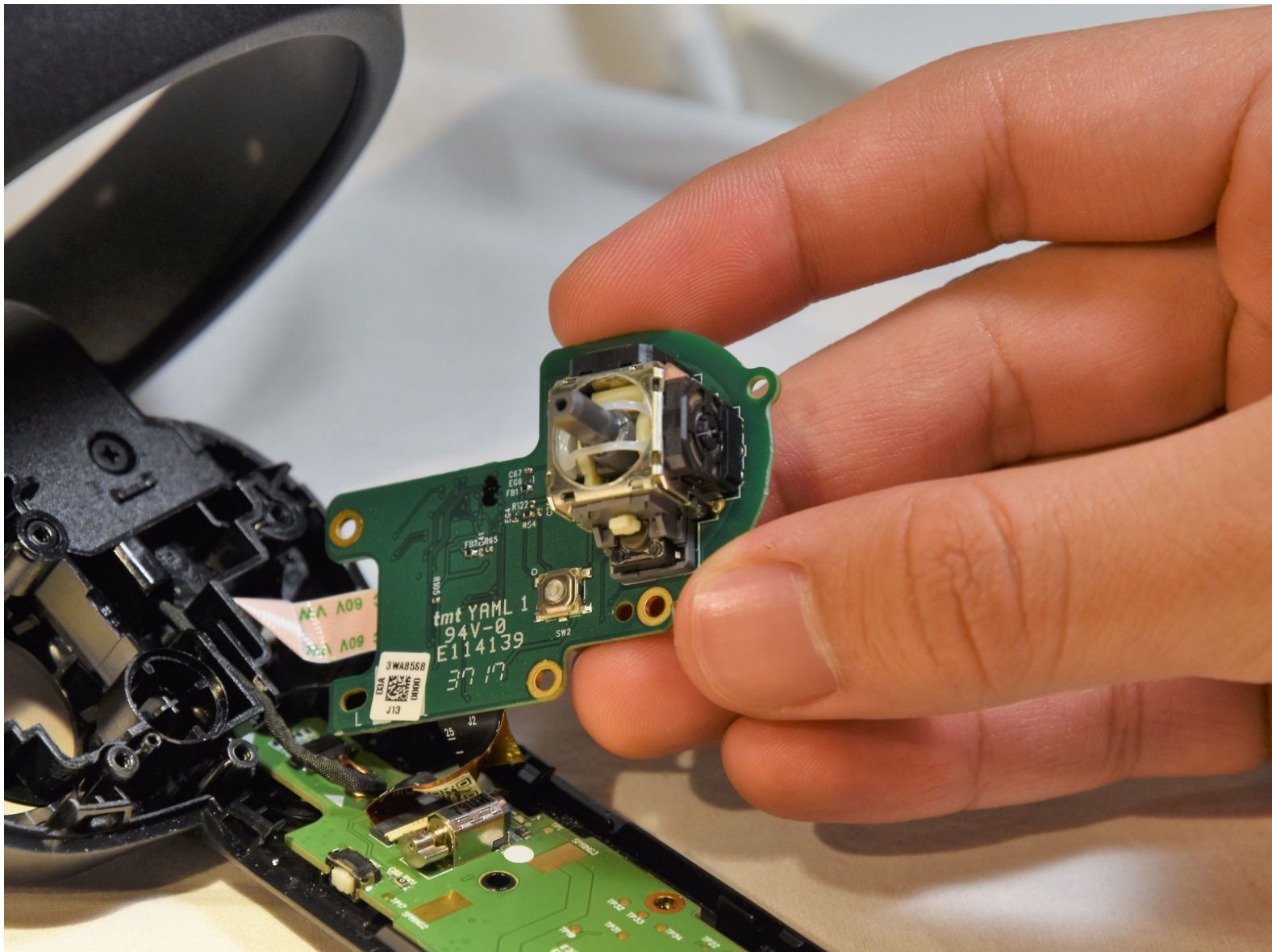




# HP Windows Mixed Reality Controllers TPC-Q044 Joystick Switch Replacement

This guide will go over how to replace the joystick and joystick control module in the HP Windows Mixed Reality Controllers TPC-Q044.

Written By: Clement Cheung



## INTRODUCTION

This guide goes over how to replace the controller's joystick on the circuit board.

If you are experiencing problems with the joystick, you will want to open up the device to fix the problem. A common solution associated with this problem is to take a small dry tissue or towel and clean the parts of the controller to ensure there is no debris limiting the joystick's range of motion. If that doesn't work, move the shaft underneath the joystick around to see how fluid it is. If the shaft is the problem, the joystick component will have to be replaced.

To complete this task you will need the indicated screwdriver and spudger. Note that you will need to solder to replace the joystick component which can be a potential danger.



### TOOLS:

- [Spudger](#) (1)
  - [Phillips #00 Screwdriver](#) (1)
-

## Step 1 — Batteries



- Slide the rear compartment cover in the direction of the arrow.
- ☞ If replacing batteries, ensure the (+) and (-) on the battery match the (+) and (-) labeled in the battery compartment.

## Step 2 — Shell



- Remove the four 4mm screws using a Phillips #00 screwdriver.

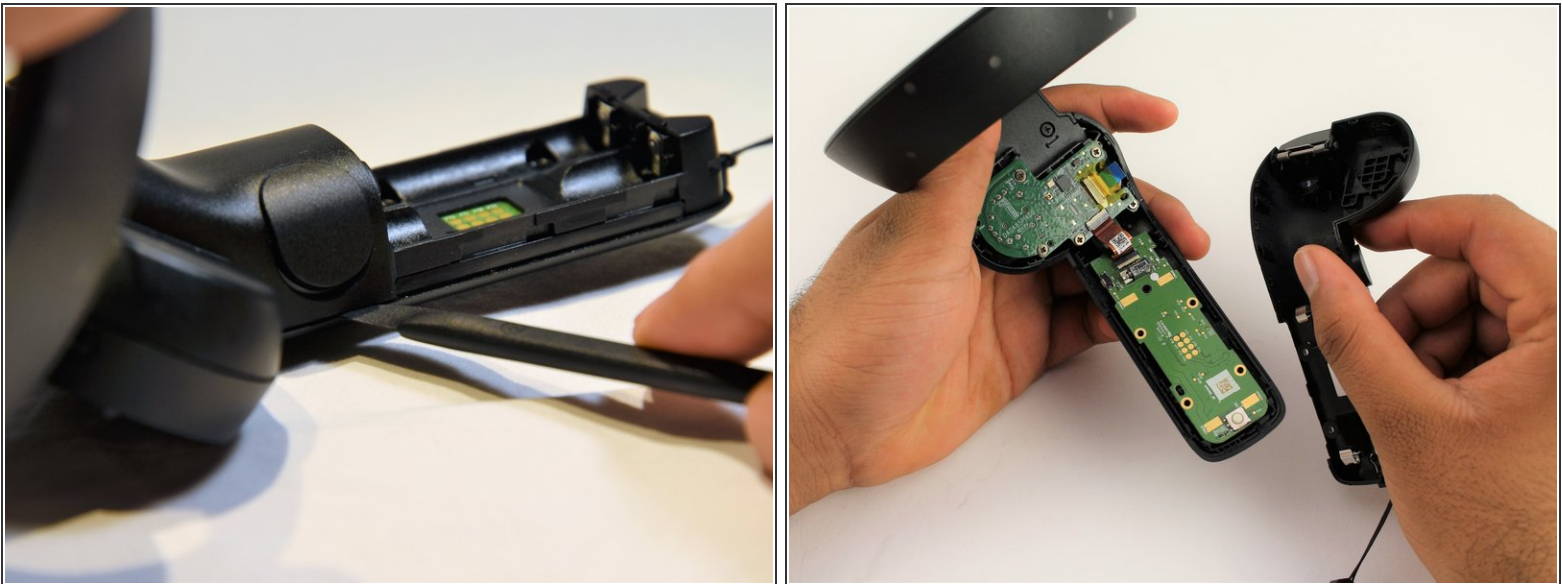


### Step 3



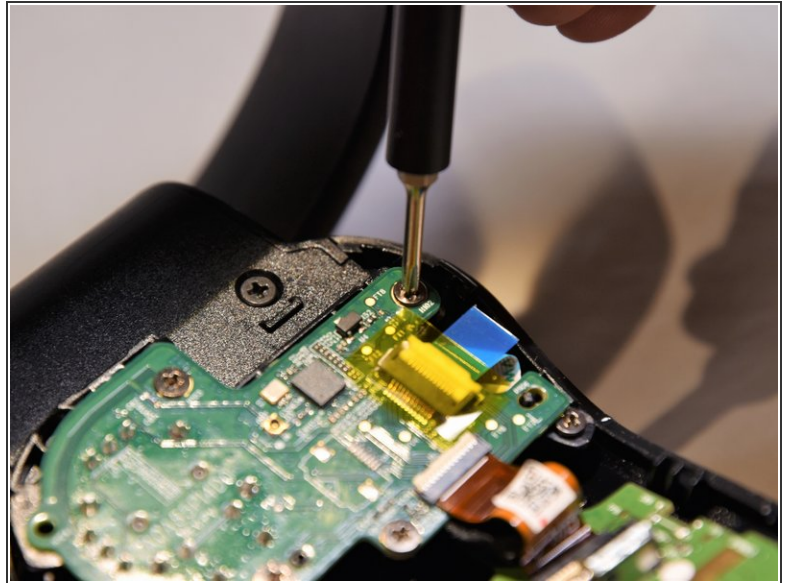
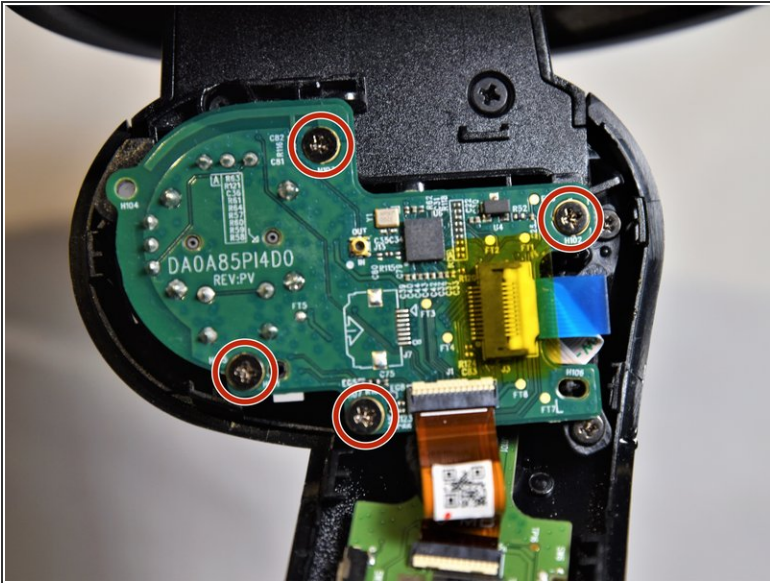
- Grip the main body and pull the joystick outwards until the entire front panel pops off.
- Remove the 6mm screw in the corner of the joystick well using a Phillips #00 screwdriver.

### Step 4



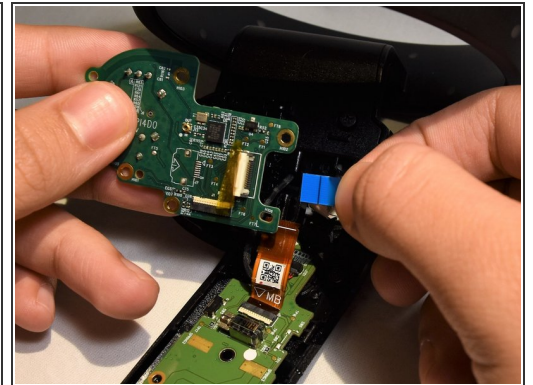
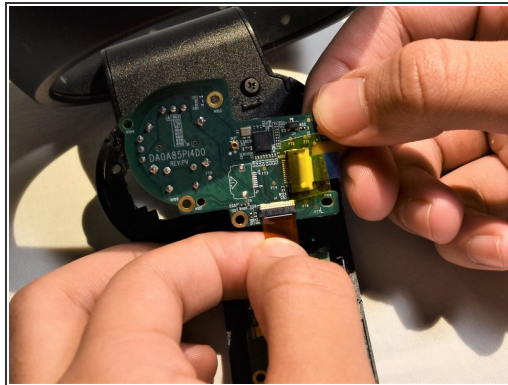
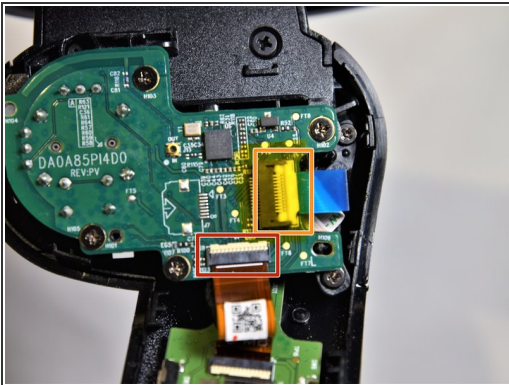
- Use a spudger to pry apart the two halves of the assembly.
- Work slowly, prying a small section at a time until the halves are completely separated.

## Step 5 — Small Circuit Board



- Using a Phillips #00 screwdriver, remove the four 4mm screws located on the joystick circuit board underneath the top half of the controller.

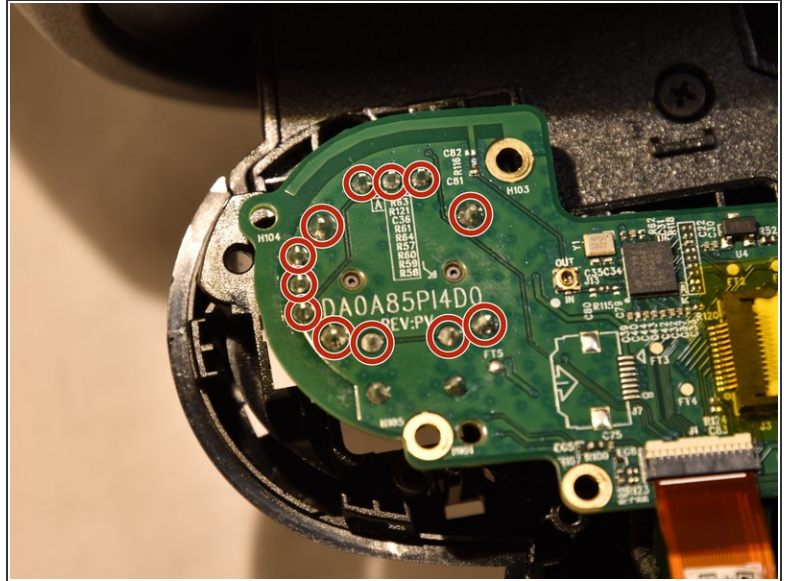
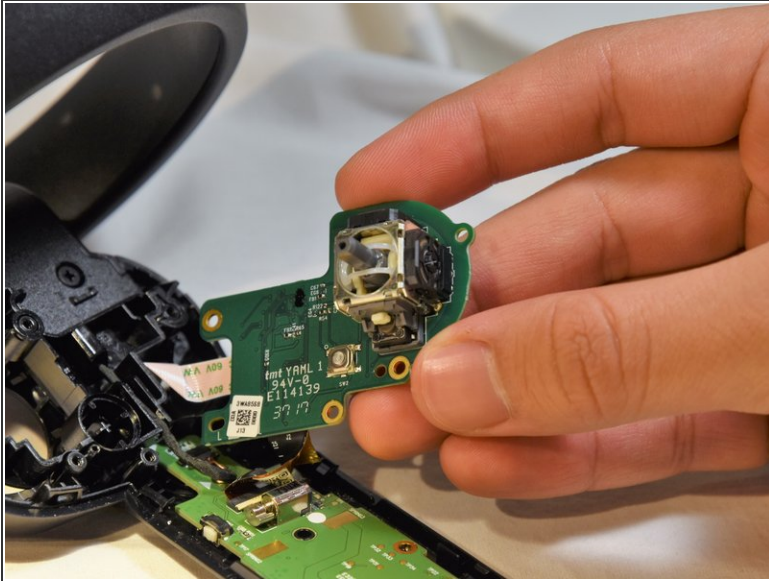
## Step 6



- Remove the orange flat cable by pulling the orange tab parallel to the circuit board.
- Release the blue flat cable by lifting up the white latch with a spudger.



## Step 7 — Joystick Switch



- The joystick controller is soldered directly to the circuit board. You can find instructions for removing soldered components [here](#).
- The joystick controller is secured by 12 solder connections. Once these have been desoldered, the controller can be removed.

To reassemble your device, follow these instructions in reverse order.