



Dell Latitude E7440 Hard Drive Replacement

How to replace the hard drive in a Dell Latitude E7440.

Written By: Akash Kedia



INTRODUCTION

If you are running low on storage space or your hard drive has failed, it is likely time to replace it. Replacing your hard drive (Latitude E7440 base models contain SSHDs) with a faster SSD will greatly improve the overall speed of your device as well. This guide will outline the steps on how to replace your drive.



TOOLS:

- [Phillips #0 Screwdriver](#) (1)



PARTS:

- [1 TB SSD / Upgrade Bundle](#) (1)
- [250 GB SSD / Upgrade Bundle](#) (1)
- [500 GB SSD / Upgrade Bundle](#) (1)
- [2 TB SSD](#) (1)

Step 1 — Prepare the laptop



- Power off your laptop before starting.
- Flip the device over so that the vents on the bottom are facing away from you.

Step 2 — Release the battery



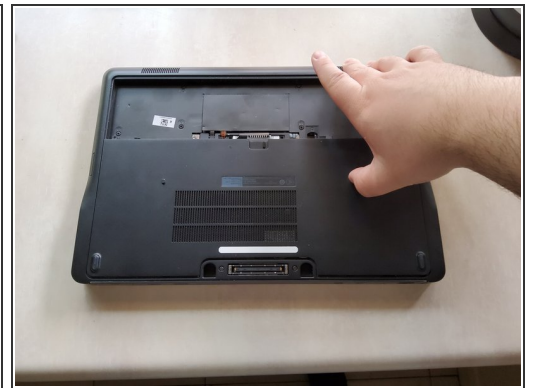
- Place your finger on the latch located in the center of the laptop.
 - Slide the latch to the right, applying enough force to reveal a red indicator.
- i** You will hear a soft click when the latch has been disengaged.

Step 3 — Remove the battery



- Lift the battery by the top, away from the laptop body.

Step 4 — Hard Drive



- Remove two M2 x 3mm Phillips #0 screws from the base cover.
- Slide the service tray using the middle stand offs to then be able to lift the tray off.

Step 5



- Remove four M2 x 3mm Phillips #0 screws from the hard drive cage.
- Remove the hard drive cage by lifting it off the laptop.
- ⓘ The hard drive cage is not pictured here, but the screws will be in these locations.

Step 6



- Disconnect the hard drive connector from the top of the drive.
- ⓘ iFixit's device came without a hard drive to picture. Your device will have a component connected to the thin, black connector.
- ✦ The hard drive connector can be removed from the laptop body to make replacement easier.

To reassemble your device, follow these instructions in reverse order.