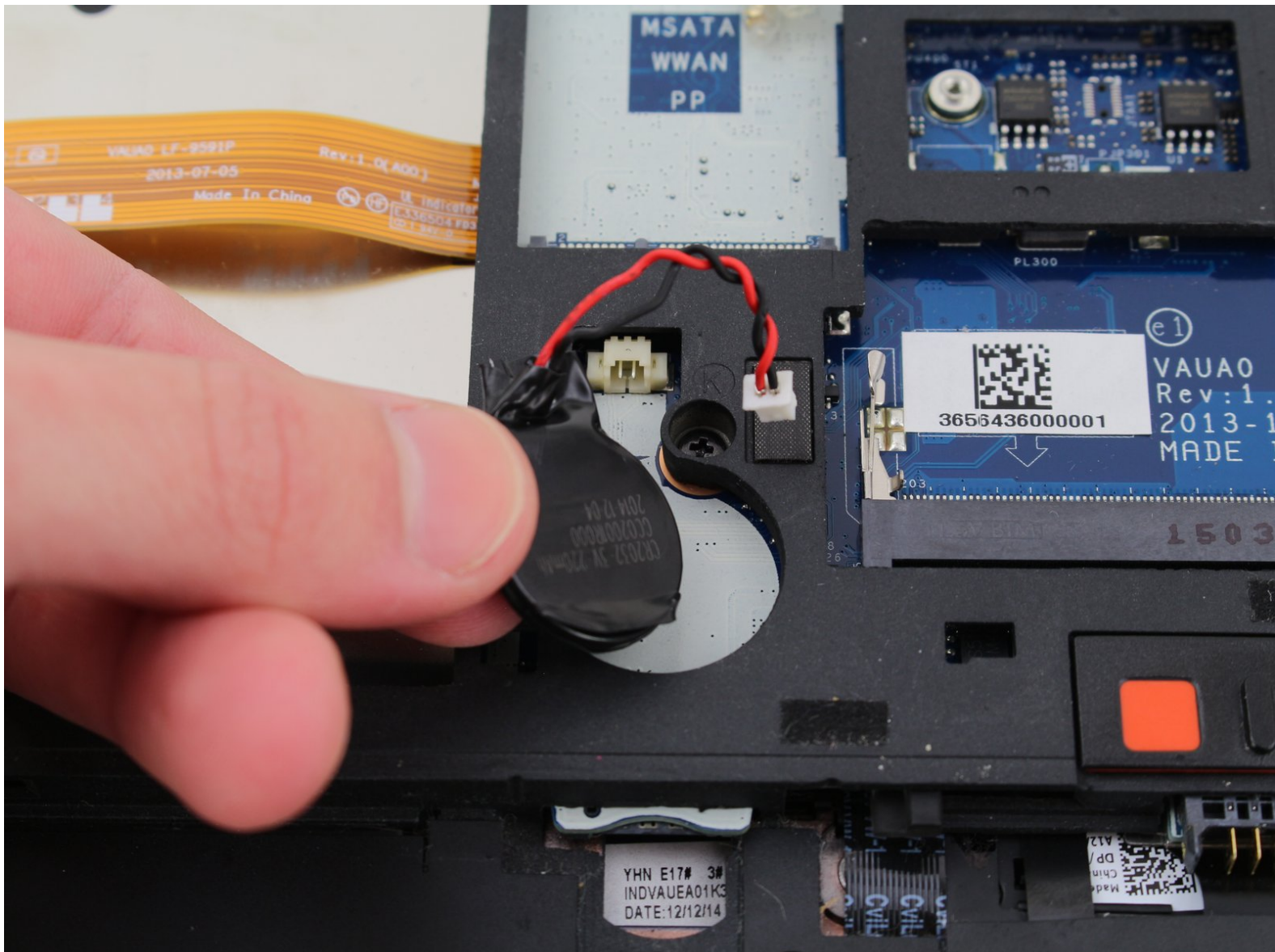




# Dell Latitude E7440 CMOS Battery Replacement

How to replace the CMOS Battery in a Dell Latitude E7440.

Written By: Akash Kedia



## INTRODUCTION

If your laptop refuses to boot into the operating system following a BIOS update, your hard drive is reported as not found, or the time on your computer's clock is always wrong after booting up, the battery powering the CMOS may be defective or out of charge. Thankfully, Dell has made replacing this battery on the Latitude E7440 easy. This guide will outline how to remove this battery for replacement.



### TOOLS:

- [Phillips #0 Screwdriver](#) (1)
  - [Spudger](#) (1)
-

## Step 1 — Prepare the laptop



- Power off your laptop before starting.
- Flip the device over so that the vents on the bottom are facing away from you.

## Step 2 — Release the battery



- Place your finger on the latch located in the center of the laptop.
  - Slide the latch to the right, applying enough force to reveal a red indicator.
- i** You will hear a soft click when the latch has been disengaged.

### Step 3 — Remove the battery



- Lift the battery by the top, away from the laptop body.

### Step 4 — CMOS Battery



- Remove two M2 x 3mm Phillips #0 screws from the base cover.

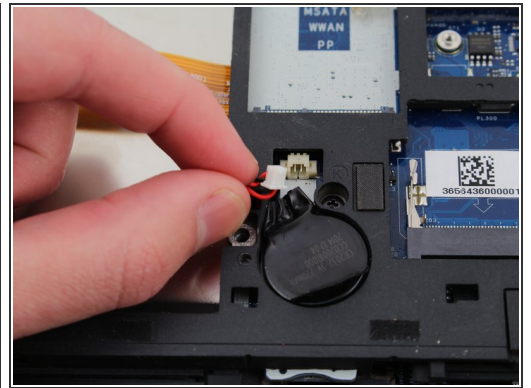
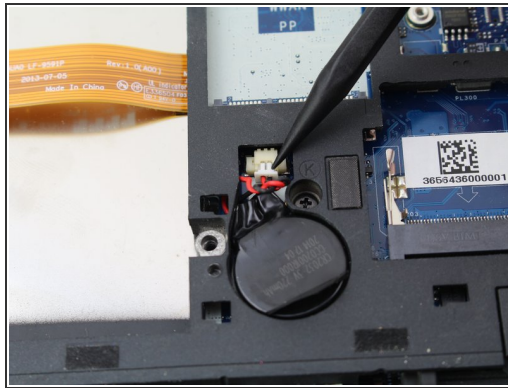


## Step 5



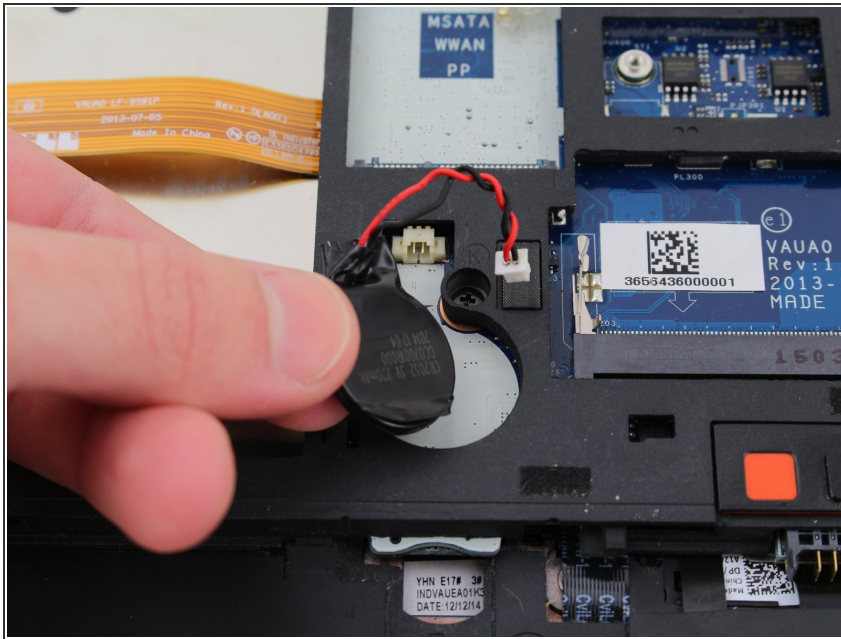
- Slide the base cover down slightly and remove it.

## Step 6



- Position your nylon spudger on the edge of the white connector, in between the connector and the port.
- Pull back on the connector until the plastic head disconnects from the port on the laptop body.
- ⓘ If the connector is stuck, move the broader end of the spudger back and forth across the connector to slowly loosen the connection.

## Step 7



- Separate the wrapped battery stack from the body by pulling up the wire.
- ⓘ You may need to use the flat end of the nylon spudger to separate the battery.
- ⓘ The stack is attached using glue, so you might hear a pop when removing it.
- ★ Reapplying an adhesive to the bottom of the battery is recommended, although not necessary, to keep it in place.

To reassemble your device, follow these instructions in reverse order.