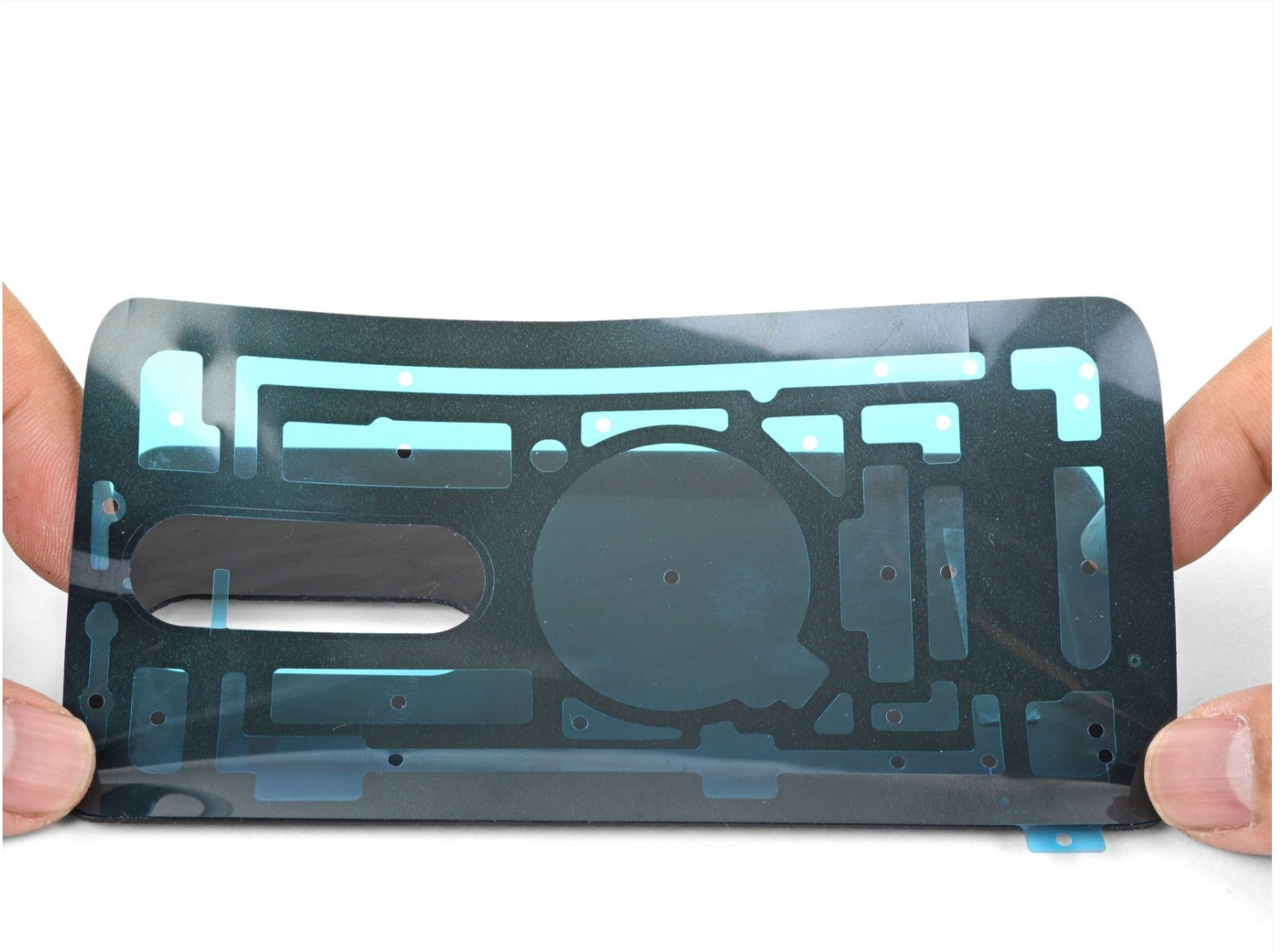




Motorola Droid Turbo 2 Rear Cover Adhesive Guide

This guide will show you how to apply new...

Written By: Arthur Shi



INTRODUCTION

This guide will show you how to apply new adhesive to the rear cover of your Motorola Droid Turbo 2 to seal it up after a repair.

TOOLS:

[Tweezers](#) (1)
[iFixit Opening Tool](#) (1)

PARTS:

[Droid Turbo 2 Rear Cover Adhesive](#) (1)

Step 1 — Motorola Droid Turbo 2 Rear Cover Adhesive Guide



- Prepare the phone frame surface by removing all traces of adhesive.
 - Use [tweezers](#) to pull adhesive chunks off. Use the opening tool to scrape residue off. You can use high concentration (over 90%) isopropyl alcohol to help dissolve residue.

 **Be careful not to damage the wireless charging coil when scraping around it.**

- If you are re-using the rear cover, prepare the inner surface by removing all traces of adhesive from it.
 - ① Do not attempt to remove the [rectangular plastic liner](#) near the bottom of the cover, but do scrape off all adhesive on it.

Step 2



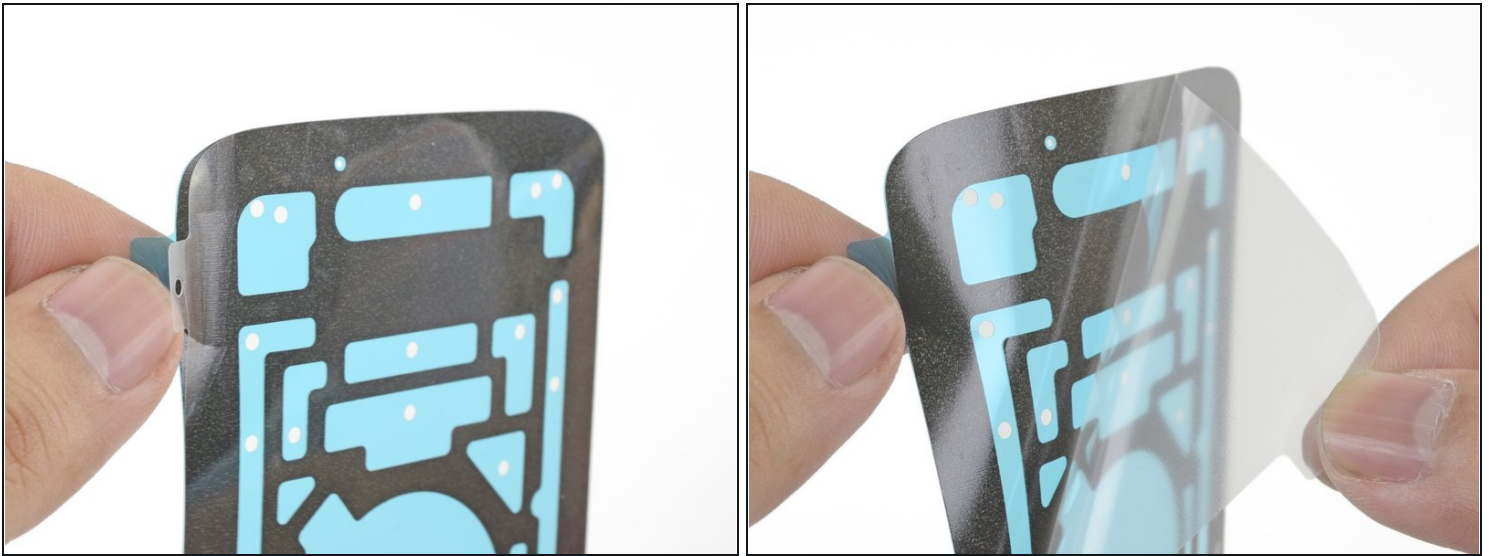
- Use your finger and firmly press the metal rear camera plate from the outer side of the rear cover until you dislodge it from its recess.
- Remove the rear camera plate.
- Clean the perimeter of the rear camera plate and remove any adhesive residue.

Step 3



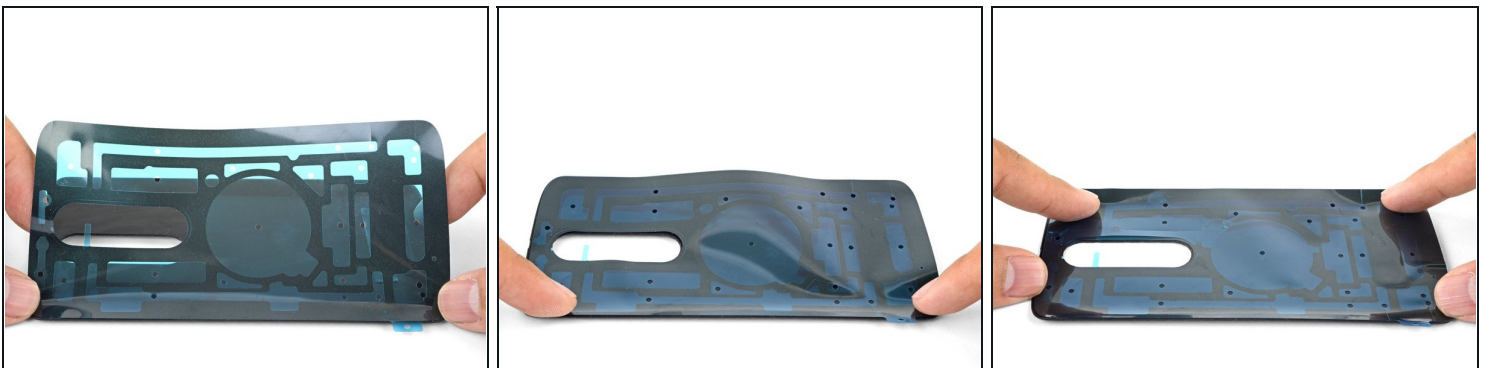
- Set the pre-cut adhesive strip next to the rear cover so that it is properly oriented—the pull tabs should point to the bottom left corner of the cover.
- ① Optionally, you can tape the pre-cut adhesive strip into position for easier application.
 - Lay the pre-cut adhesive strip over the rear cover, aligning it to the long edges.
 - Tape one long edge of the pre-cut adhesive strip to the rear cover, locking the alignment in place while allowing the strip to still swing.

Step 4



- Peel and remove the **clear plastic liner** from the pre-cut adhesive strip.
- ① This will expose adhesive facing the rear cover, so don't remove the liner until you are ready to begin placement.

Step 5



- ① The exposed adhesive is very sticky and prone to adhering to surfaces unintentionally. Be careful while handling and aligning the adhesive.
- Align the adhesive strip to a long edge of the rear cover.
 - ① If you have previously taped the adhesive strip to the rear cover, the strip should already be aligned.
- Beginning from the alignment edge, use your fingers to press the adhesive strip onto the rear cover.

Step 6



- Pull and remove the blue liner tab located in the rear cover's rear camera hole.
- ① This will expose a ring of adhesive around the hole, which will hold the rear camera plate in place.

Step 7



- Align the rear camera plate with the rear cover's camera hole and drop it in place.
- Press the rear camera plate in place. You may need to squeeze from both sides to ensure that the adhesive bonds properly.

Step 8



- Continue with phone re-assembly until you are ready to seal up the phone.
 - ① Be sure to test your phone's functionality before sealing your phone.
- Peel and remove **the blue liner** from the rear cover, exposing the adhesive to stick onto the phone frame.
- Align and press the rear cover onto the phone frame.

Repair didn't go as planned? Check out our [Motorola Droid Turbo 2 Answers community](#) for troubleshooting help.