



PSP E1000 UMD door Replacement

How to replace psp E1000 UMD door

Written By: William Harris

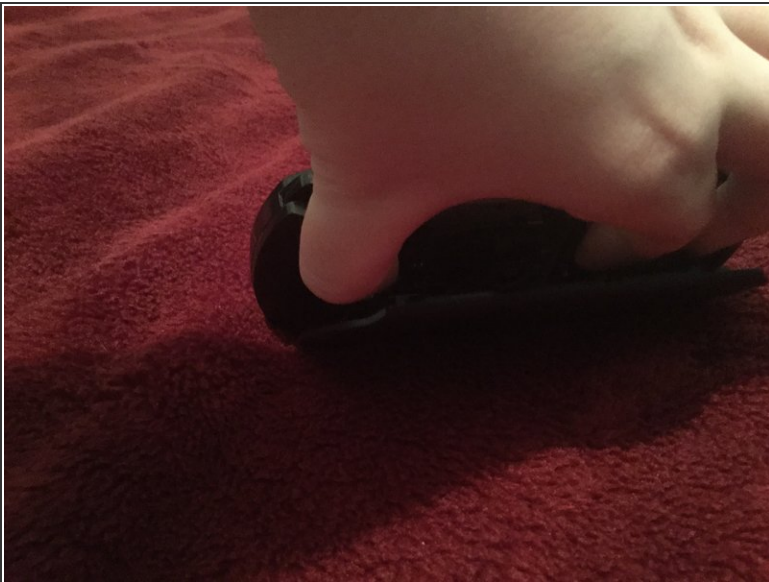


Step 1 — UMD door



- Open the UMD door

Step 2



- using your thumb and pointer finger, get the 2 top ends of the UMD holder and pinch together, you've done this correctly if the trays close to the door.

Step 3



- **CAREFULLY** pull off the door if it's got nothing wrong with it

To reassemble your device, follow these instructions in reverse order.