



Dell Latitude 7480 Battery Replacement

This guide shows how to remove and replace a worn battery for the Dell Latitude 7480 laptop.

Written By: brandon bradshaw



INTRODUCTION

This guide shows how to remove and replace a worn battery for the Dell Latitude 7480 laptop.

For your safety, discharge your battery below 25% before disassembling your device. This reduces the risk of a dangerous thermal event if the battery is accidentally damaged during the repair. If your battery is swollen, [take appropriate precautions](#).



TOOLS:

- [Essential Electronics Toolkit](#) (1)



PARTS:

- [Dell Latitude 7280 and 7480 Replacement Battery](#) (1)

Step 1 — Battery



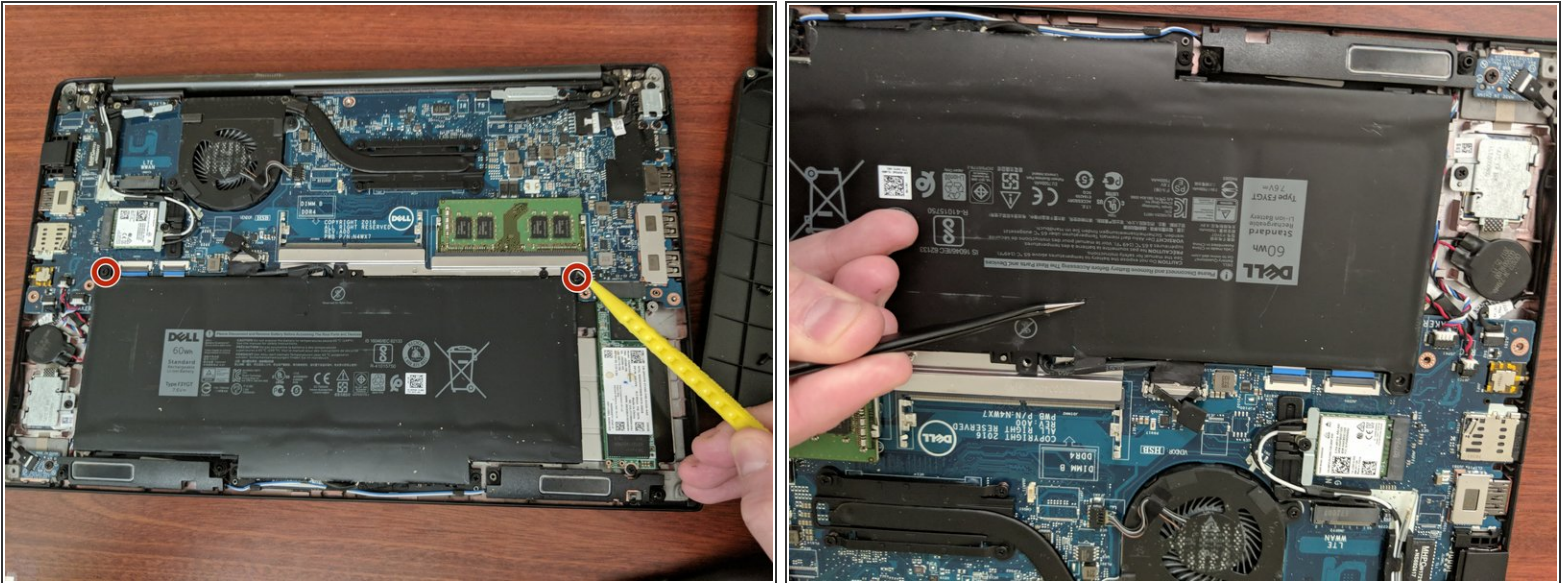
- Make sure laptop is unplugged and powered off.

Step 2 — Remove the back cover



- Use a Phillips screwdriver to remove the eight screws securing the back cover.
- Remove the back cover.

Step 3 — Unscrew the battery



- Use a Phillips screwdriver to remove the two screws securing the battery in place.
- Carefully peel the tape holding the battery cable in place.
- ⚠ Be careful not to puncture the battery.

Step 4 — Disconnect the battery cable



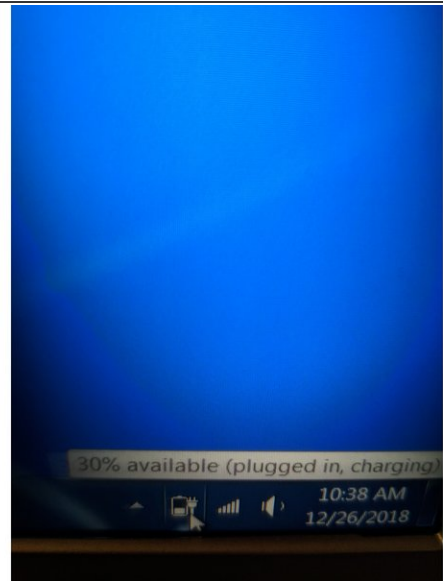
- Using the pull tabs pull up and remove the battery connector from the motherboard.
- Remove the battery and set aside to remove the connector cable.
- ⓘ If your new battery did not come with a connector cable you will need this.
- Remove the connector cable. Set aside to apply to the new battery.

Step 5 — Install the battery cable



- Connect the battery cable to the new battery. You can skip this step if your new battery came with one installed.
- Connect one end of the battery cord to the battery. Route the cord in the channel between battery cells.

Step 6 — Install the new battery and test



- Install the new battery by doing the steps in reverse. Be sure to test the device with and without AC power applied to the laptop.
- Dispose of old battery properly and safely.

To reassemble your device, follow these instructions in reverse order.

Take your e-waste to an [R2 or e-Stewards certified recycler](#).

Repair didn't go as planned? Try some [basic troubleshooting](#), or ask our [Answers community](#) for help.