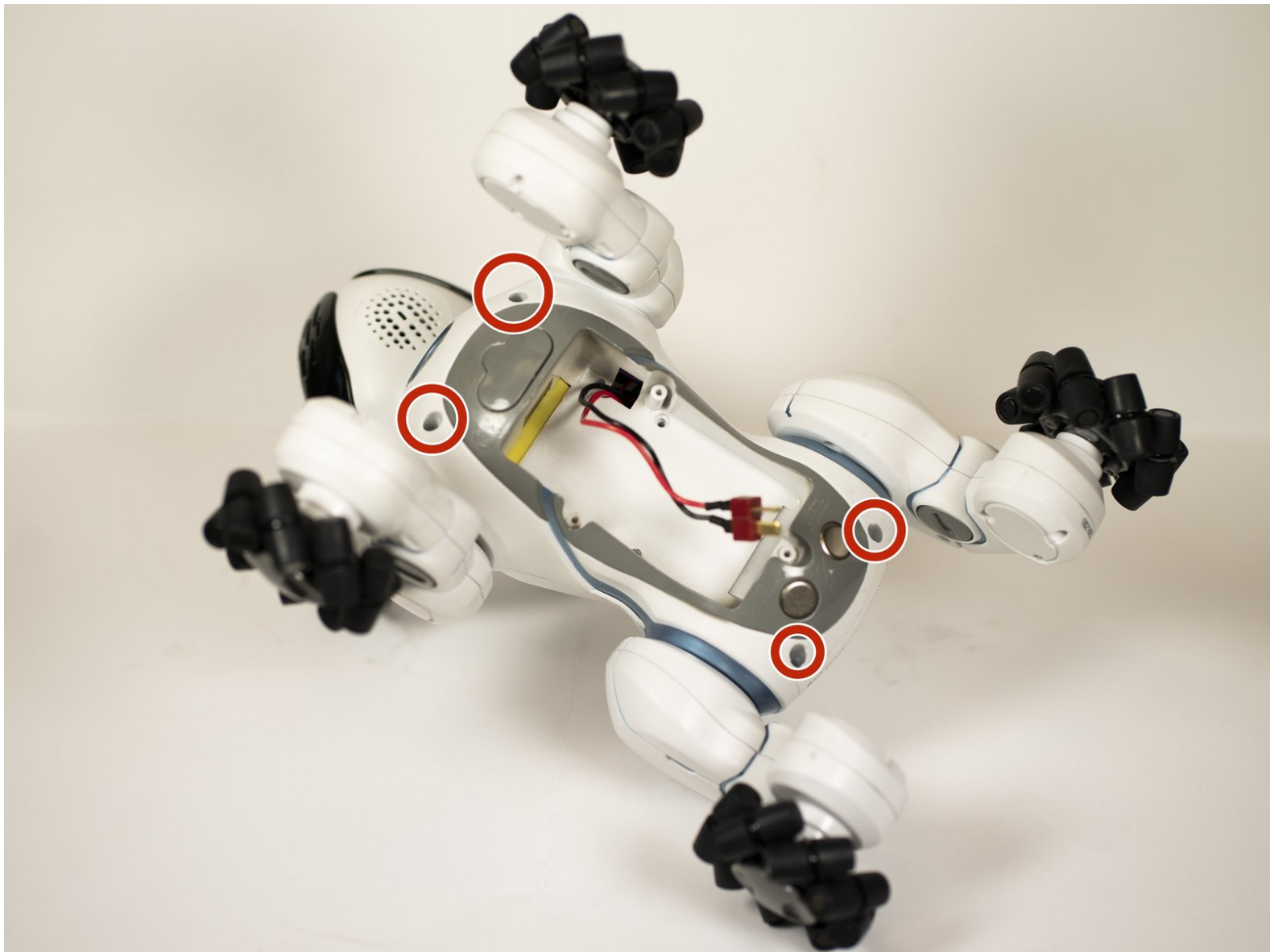




# WowWee CHiP Robot Dog Ear Replacement

How to disassemble CHiP to replace ear.

Written By: Joseph Dantes





## TOOLS:

- [Phillips #00 Screwdriver](#) (1)
- [Mako Driver Kit](#) (1)

## Step 1 — Battery



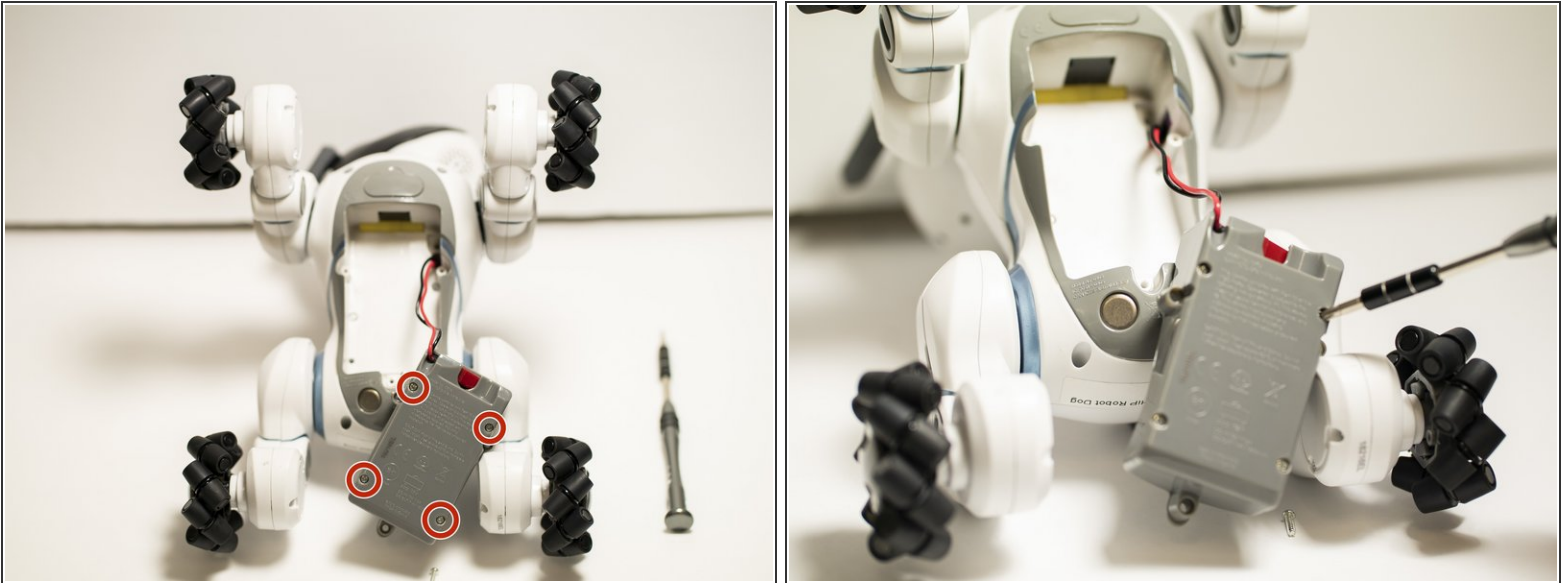
- Place CHiP on its back so that its stomach is facing you.

## Step 2



- There are three small hex screws connecting the battery to CHiP. Remove all screws with a hex screwdriver and remove battery casing.

## Step 3



- Once the top face of the battery is off, you will see a small rectangular box that the batteries are inside. There are 4 Phillips head screws in the box. Remove all screws with a Phillips head screwdriver.

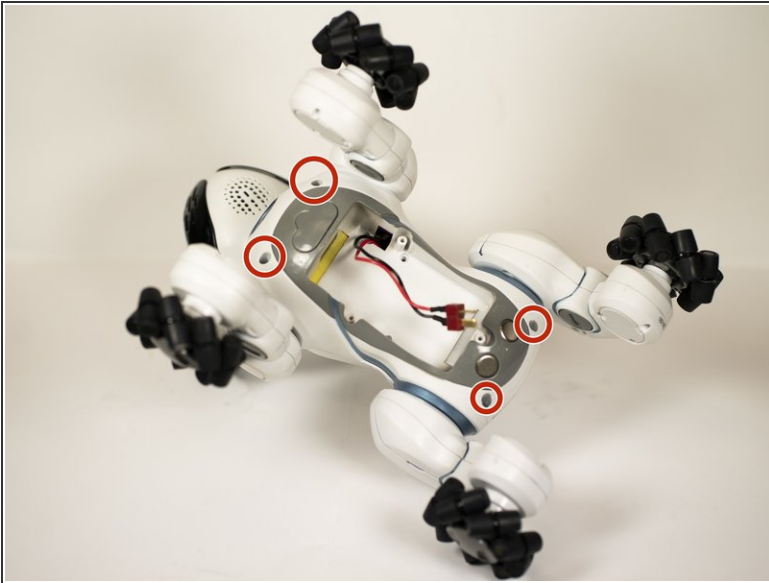
## Step 4



- Once the battery is removed from body, the battery should be connected by a red and black wire. There is a red rectangular connector that easily pulls apart. Pull apart the red rectangular connector.

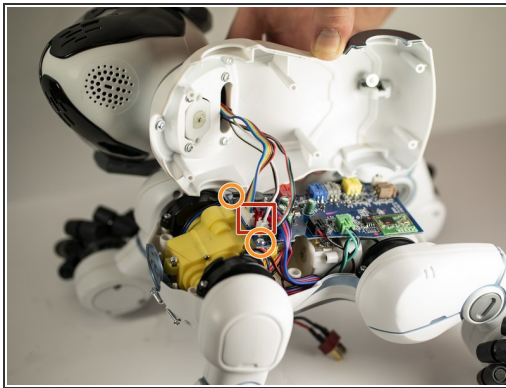
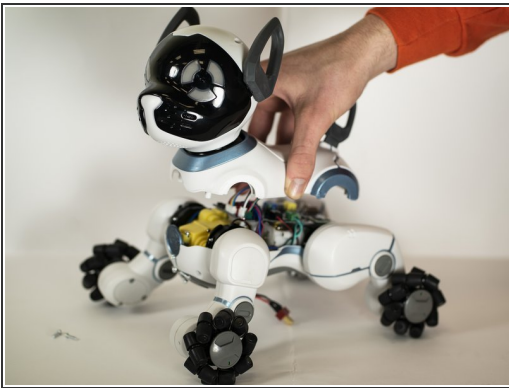


## Step 5 — Ear



- Remove the 4 Phillips screws shown.

## Step 6



- Pull up top part of toy and remove the connecting wires.
- Unscrew the 2 Phillips head screws. CHiP should be viewed as seen in the third picture.

## Step 7



- Remove the 4 Phillips screws to separate the head from the body.

## Step 8



- Remove the 4 Phillips screws on back of the head, and pull off the casing for the back of the head.

## Step 9



- Unscrew the screw on the ear with a Phillips screwdriver, and pull off the plastic connector. Remove the ear from head.

To reassemble your device, follow these instructions in reverse order.