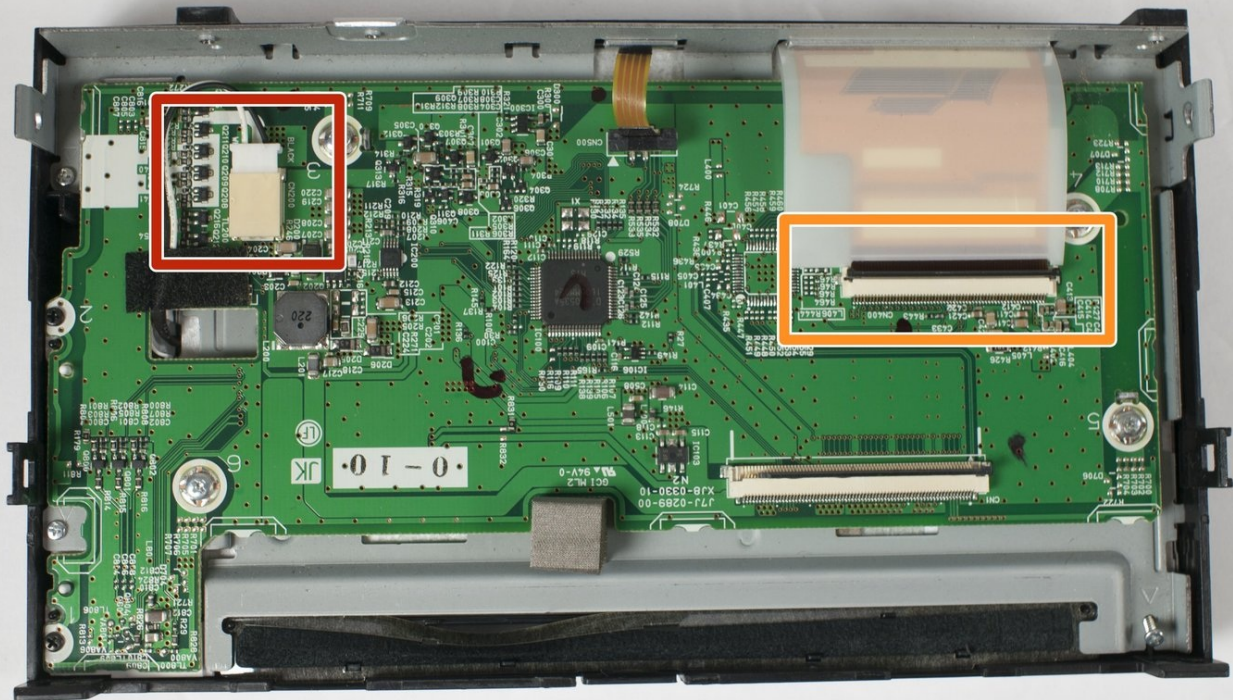




JVC KW-V820BT Touch Screen Replacement

This guide illustrates the disassembly of the...

Written By: Marshall Andersen



INTRODUCTION

This guide illustrates the disassembly of the entire front panel assembly. This allows access to serviceable components, including the touch screen display. Replacement parts are available [here](#).

TOOLS:

Phillips #00 Screwdriver (1)

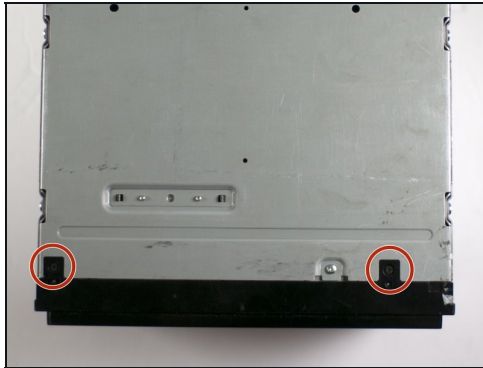
Phillips #0 Screwdriver (1)

Spudger (1)

Metal Spudger (1)

Tweezers (1)

Step 1 — Front Panel Assembly



- Remove the four 1/8-inch black machine screws using a Phillips #00 screwdriver.

Step 2



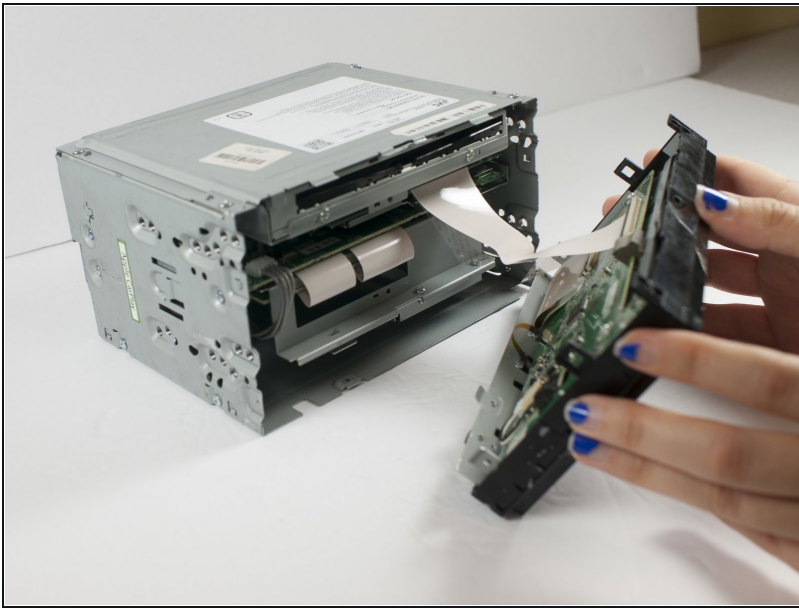
- Remove three steel-finish, pan-head, 1/64 x 3/16" machine screws identified in the photograph, using the Phillips #0 screwdriver.

Step 3



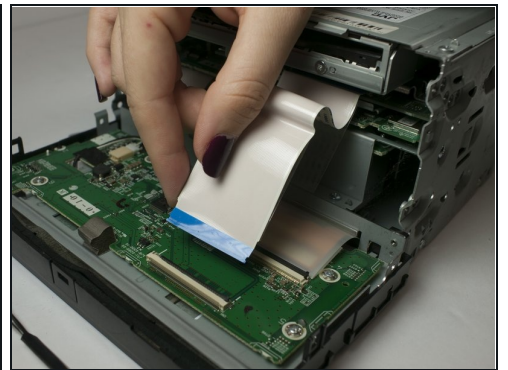
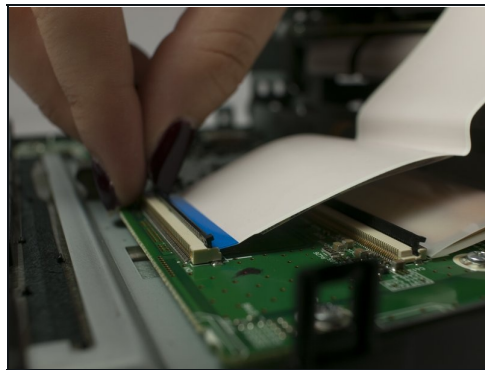
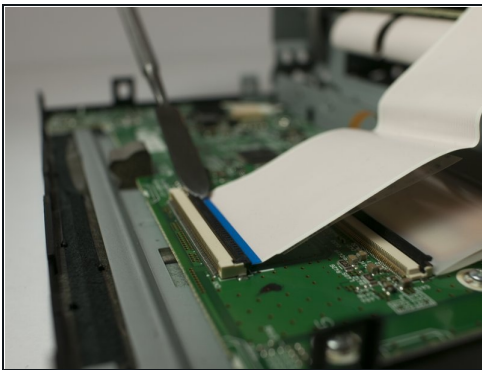
- Using your fingers and/or a metal spudger, gently release the plastic locking tabs of the front panel assembly from the steel enclosure while prying the front panel assembly away from the steel enclosure with your fingers.

Step 4



- Gently remove the front panel from the steel enclosure.

Step 5



- Gently separate the ribbon cable from from ZIF connector on the circuit board using a metal smudger.

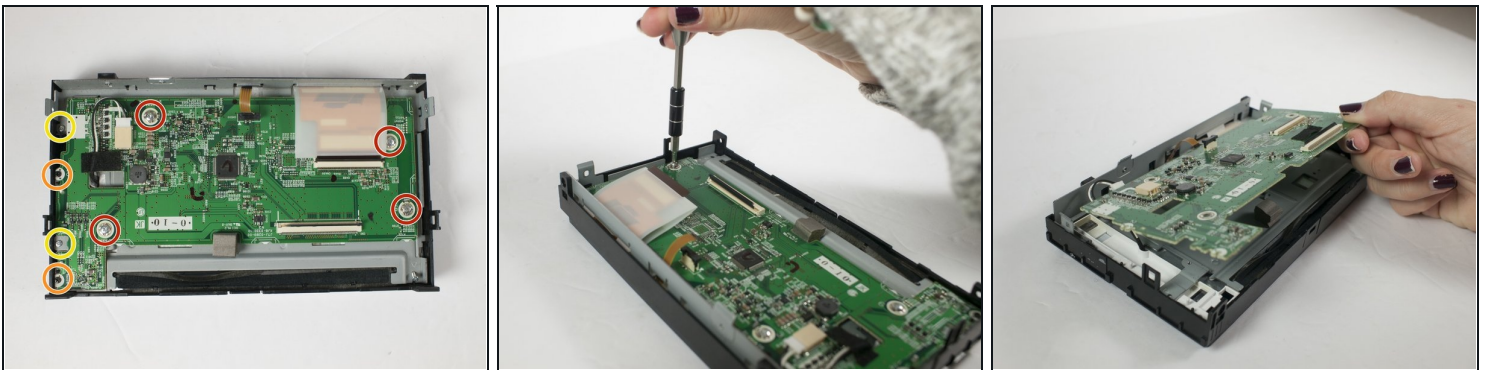
⚠ Be careful not to scratch or damage components or features of the circuit board with the metal spudger

Step 6 — Touch Screen



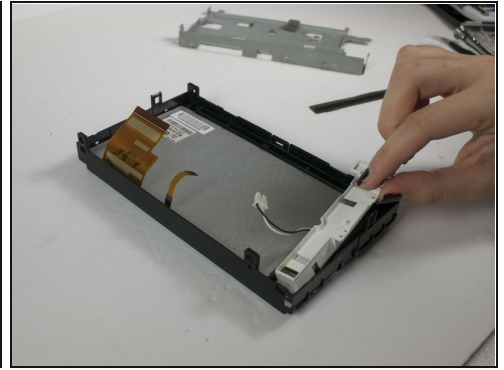
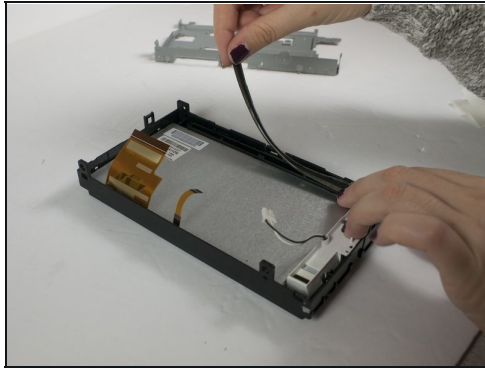
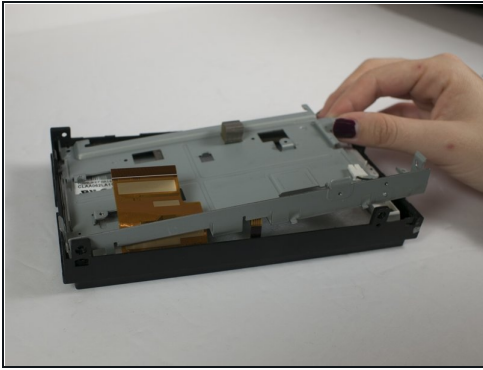
- Remove the power connector gently using [tweezers](#) or your fingers.
 - Remove the ribbon cable ZIF connector by flipping the black plastic bar and sliding the ribbon out.
- ⚠ Be careful not to scratch or damage components or features of the circuit board with the metal spudger

Step 7



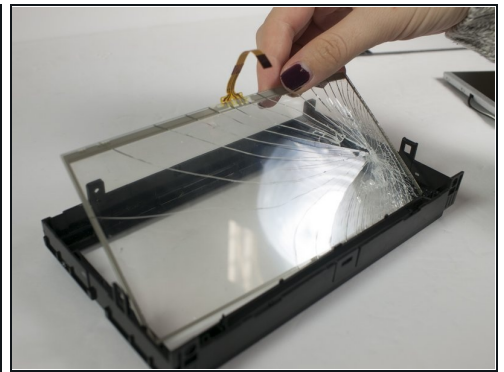
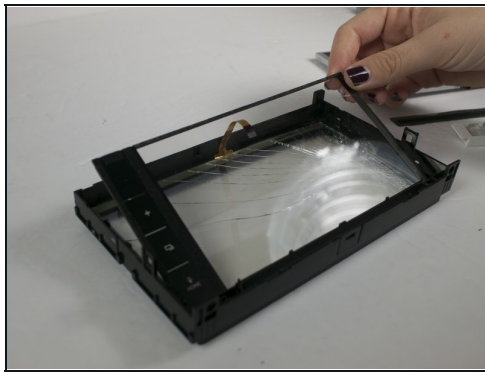
- Remove the four pan-head 0-80 x 1/8" stainless steel machine screws using the Phillips #00 screwdriver.
 - Remove 2 pan-head 0-80 x 1/8" black finish machines screws using Phillips #00 screwdriver.
 - Remove 2 pan head zinc plated 1/64 x 3/16" machine screws using Phillips #0 screwdriver.
- ⓘ Make sure to keep screws of different sizes organized for easier reassembly

Step 8



- Remove the metal retaining shroud.
- Remove the fabric disk drive passage liner.
- Remove the white plastic button retainer.

Step 9



- Remove LCD display.
- Remove touch-activated side button display.
- Remove global touch screen assembly.

⚠ Be careful when handling glass, especially broke glass. It is suggested to wear cut-resistant gloves when handling glass.

To reassemble your device, follow these instructions in reverse order.