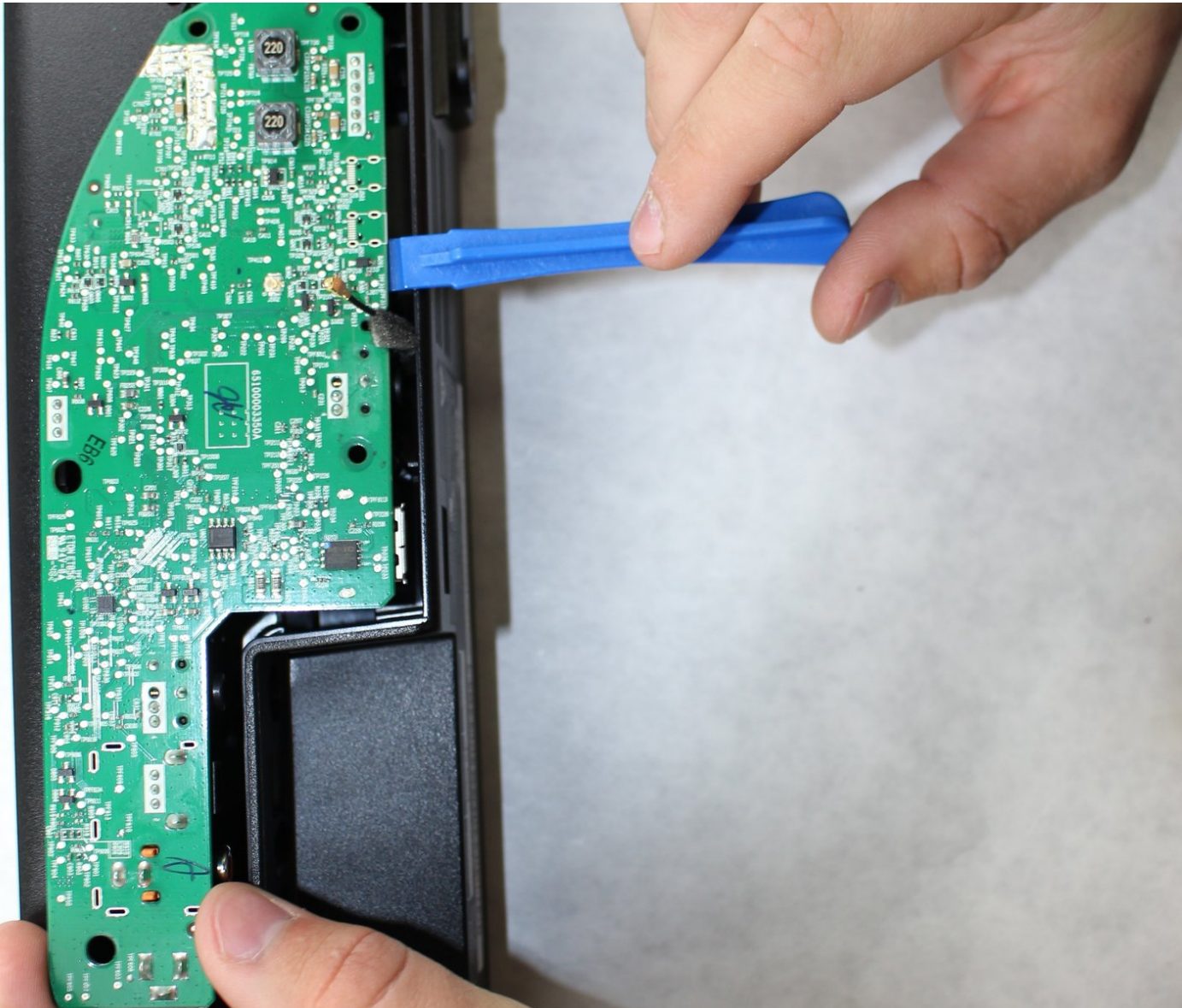




Bose Solo 5 Sound Bar Control Panel Replacement

How to replace a Bose Solo 5 Sound Bar control panel.

Written By: Emma



INTRODUCTION

The following guide explains in detailed steps including pictures on how to replace the control panel of the Bose 5 Sound Bar. The control panel is responsible for controlling the power and the output of the Bose 5 Sound Bar. It may be necessary to replace the control panel if the sound bar does not produce sound when it is plugged into the TV. Upon completion of the control panel replacement, the Bose 5 Sound Bar should work as expected. Otherwise, it would indicate that your system has a different problem.

Before using this guide, be sure to test different audio cables that connect the sound bar to the TV to confirm that the faulty part is coming from the sound bar. Before beginning, make sure to disconnect the sound bar from the TV.



TOOLS:

- [iFixit Opening Tools](#) (1)
 - [Phillips #2 Screwdriver](#) (1)
-

Step 1 — Control Panel



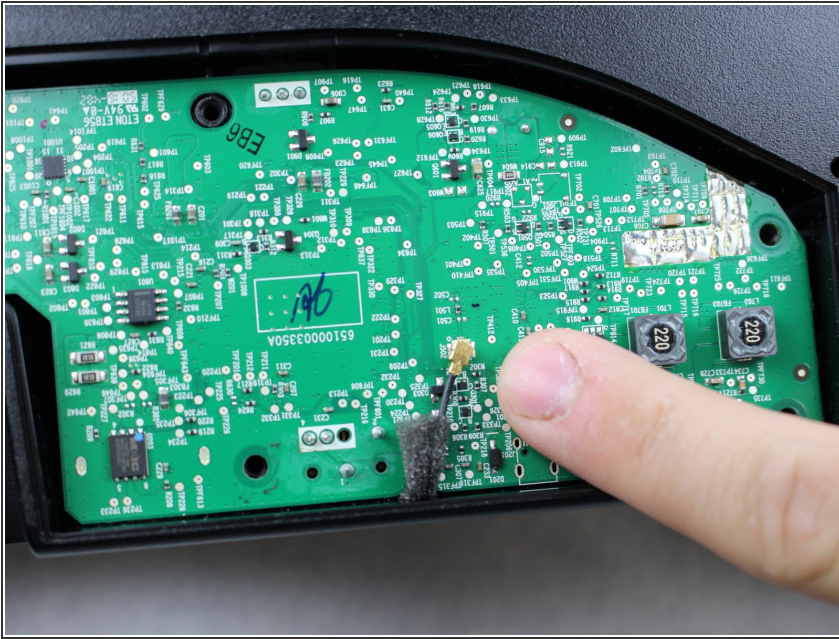
- Lay Bose Solo 5 with speakers facing away from you and bottom side facing upward.

Step 2



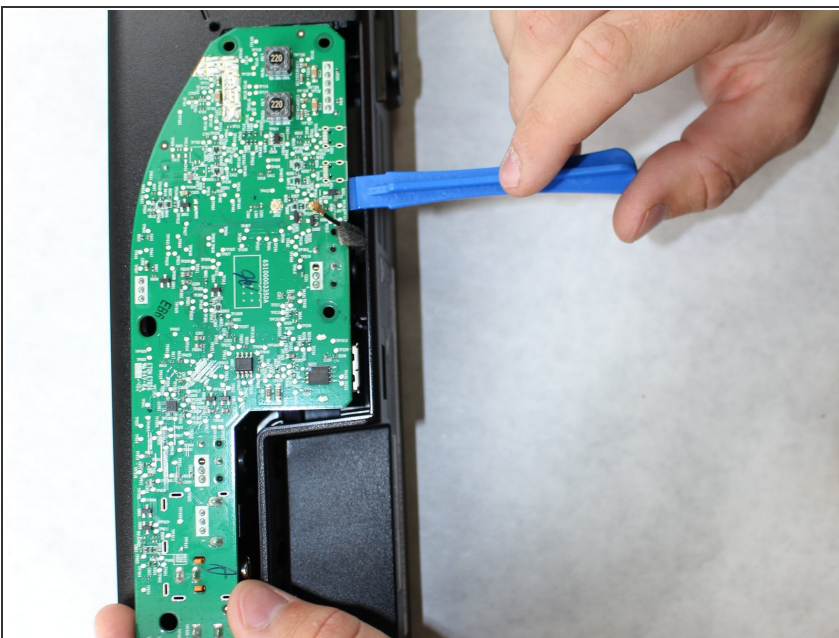
- Remove the five 18.25mm screws with the Phillips #2 screw driver.

Step 3



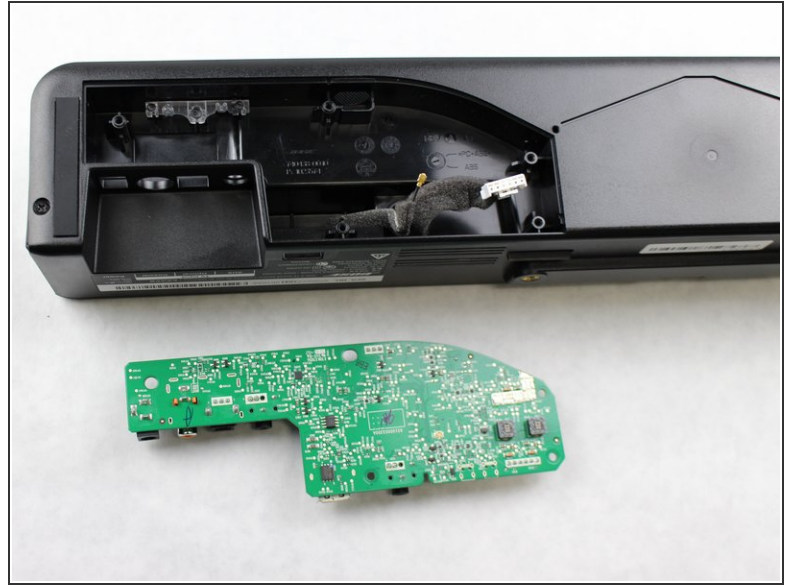
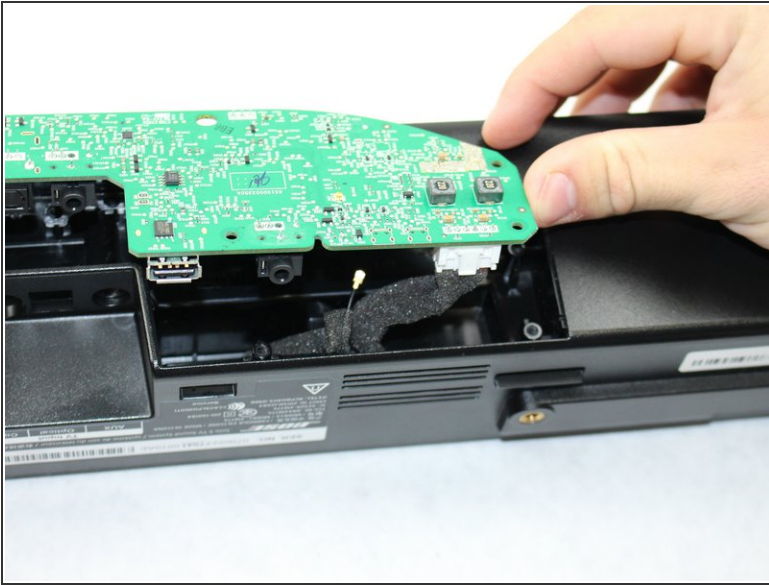
- Remove the gold plates snap connector from the circuit board by pulling it apart.

Step 4



- Using the plastic opening tool, lift the circuit board up and remove from housing.

Step 5



- Disconnect the cords running to the white connector by pulling up on the tab until it is disconnected completely.

To reassemble your device, follow these instructions in reverse order.