



MacBook Pro 13" Retina Display Mid 2014 Feet Replacement

Have your MacBook Pro feet seen better days?...

Written By: Taylor Dixon



INTRODUCTION

Have your MacBook Pro feet seen better days? Use this guide to give your Mid 2014 MacBook Pro a fresh set of feet.

TOOLS:

MacBook Pro and Air 5-Point Pentalobe Screwdriver (1)

Tweezers (1)

Adhesive Cleanup Kit (1)

PARTS:

MacBook Pro Retina (A1425, A1502, A1398, and A2289) Plastic Feet (1)

Step 1 — Lower Case



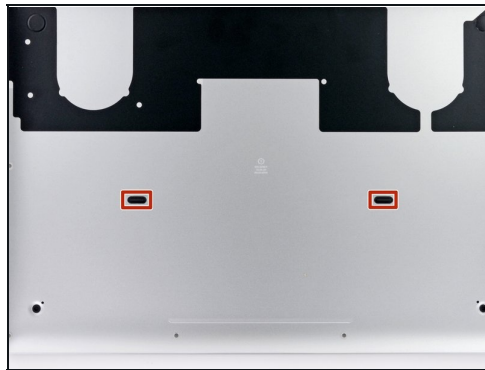
- Remove the following ten screws securing the lower case to the upper case:
 - Two 2.3 mm P5 Pentalobe screws
 - Eight 3.0 mm P5 Pentalobe screws
- ☑ Throughout this repair, [keep track of each screw](#) and make sure it goes back exactly where it came from to avoid damaging your device.

Step 2



- Wedge your fingers between the upper case and the lower case.
- Gently pull the lower case away from the upper case.
- Remove the lower case and set it aside.

Step 3



- ★ During reassembly, gently push down the center of the lower case to reattach the two plastic clips.
- The lower case is connected to the upper case at the center, with two plastic clips.

Step 4 — Feet



- Peel away any stickers from the backside of the rear case covering the feet you have chosen to replace.
 - ☑ Any stickers you remove will most likely be unsalvageable for re-use. That's okay! Your MacBook does not need them to function.

Step 5



- Remove any broken or damaged feet.
 - ① If the foot you are replacing is still intact, you can use your [tweezers](#) push it out from the inside.
- If the old foot is difficult to remove, use a hair dryer or a heat gun to apply some heat to the area and loosen the adhesive.

Step 6



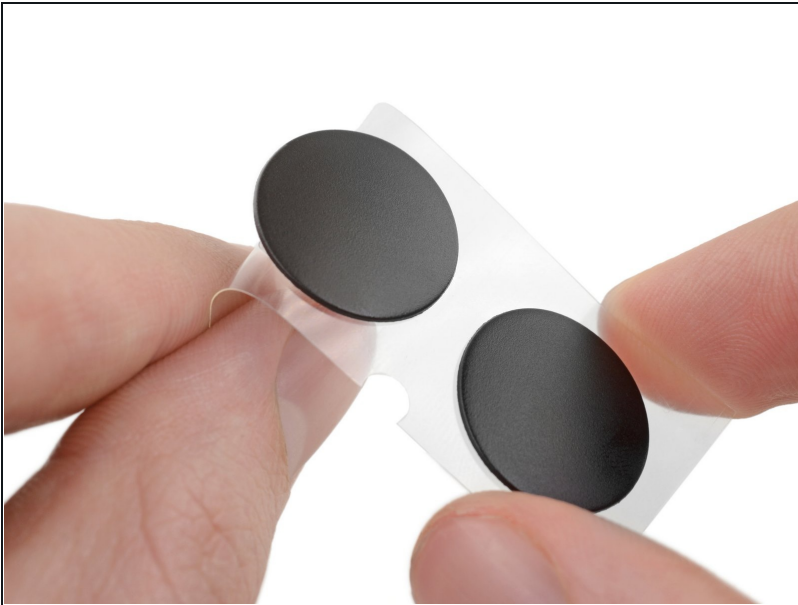
- Scrub the foot cavity with adhesive remover to remove any remaining adhesive.

Step 7



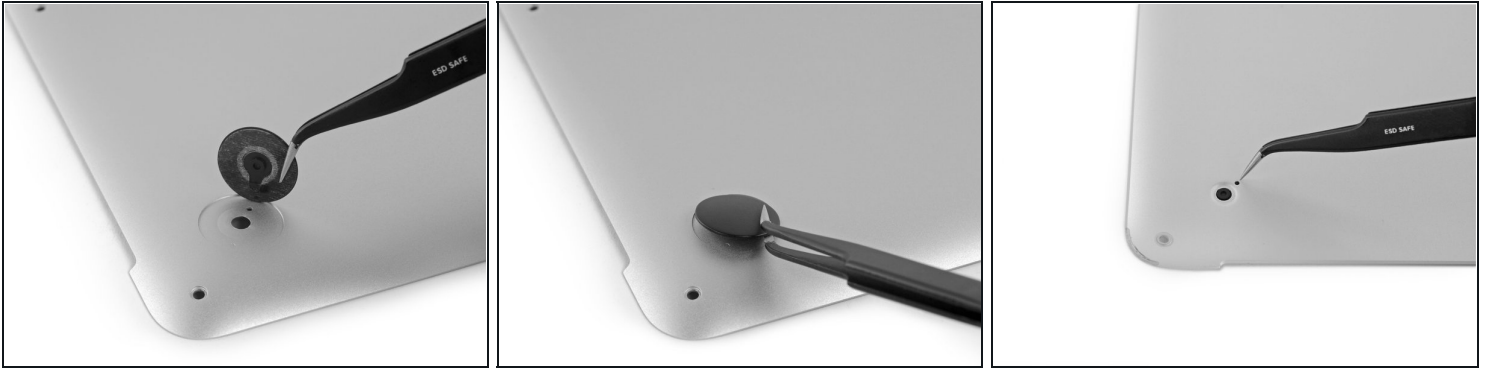
- Wipe the foot cavity with an isopropyl alcohol prep pad to remove any cleaner residue and prep the area for the adhesive on the new foot.

Step 8



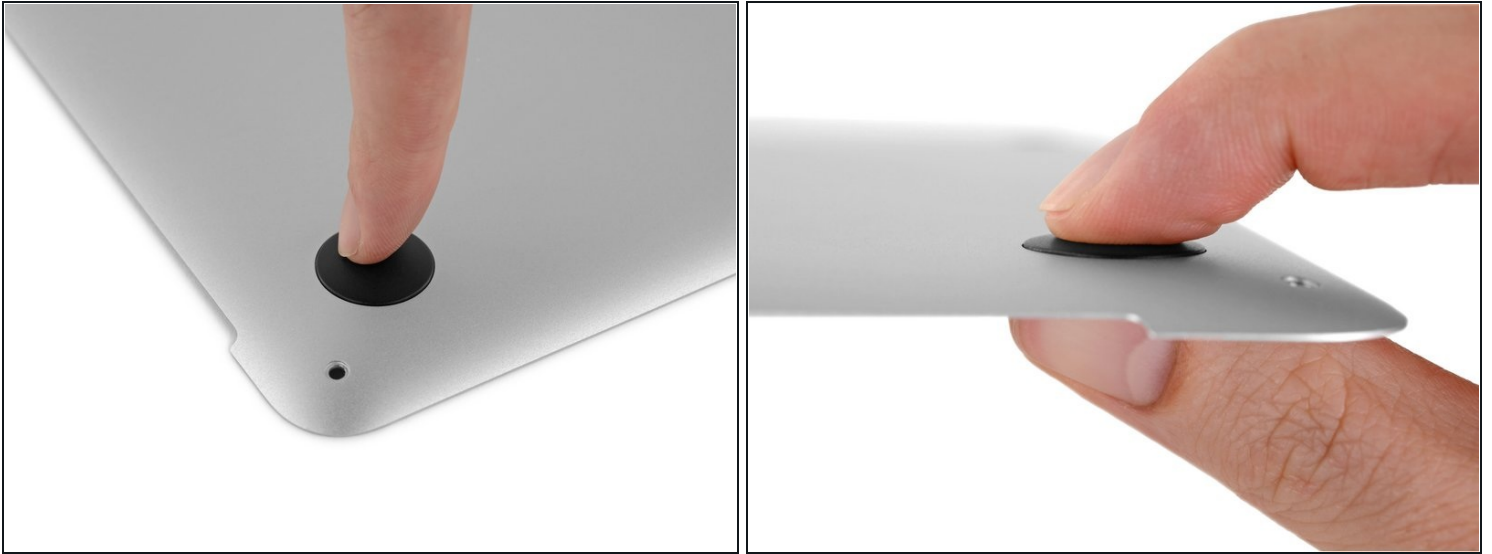
- Peel a replacement foot from the plastic backing.
 - ① The adhesive is fairly strong —make sure that you are peeling the foot up, not tearing the plastic backing.

Step 9



- Align the new foot inside the cavity.
 - ① Make sure the alignment nub on the foot is lined up with the small hole near the perimeter of the pad.
 - ① You may want to use a pencil to lightly mark where the alignment nub is located. Be careful not to scratch the lower case with your pencil.
- Lay the foot down while keeping it properly aligned.
- Check for proper alignment from the inside of the case. The alignment nub should be slightly visible through the alignment hole.

Step 10



- Press the new foot into place firmly with your finger, then apply pressure by pinching the foot from either side of the case with your finger and your thumb.
- Maintain pressure for 30 seconds to set the pressure-sensitive adhesive.
- Repeat the last seven steps for any remaining broken or worn feet.

To reassemble your device, follow these instructions in reverse order.