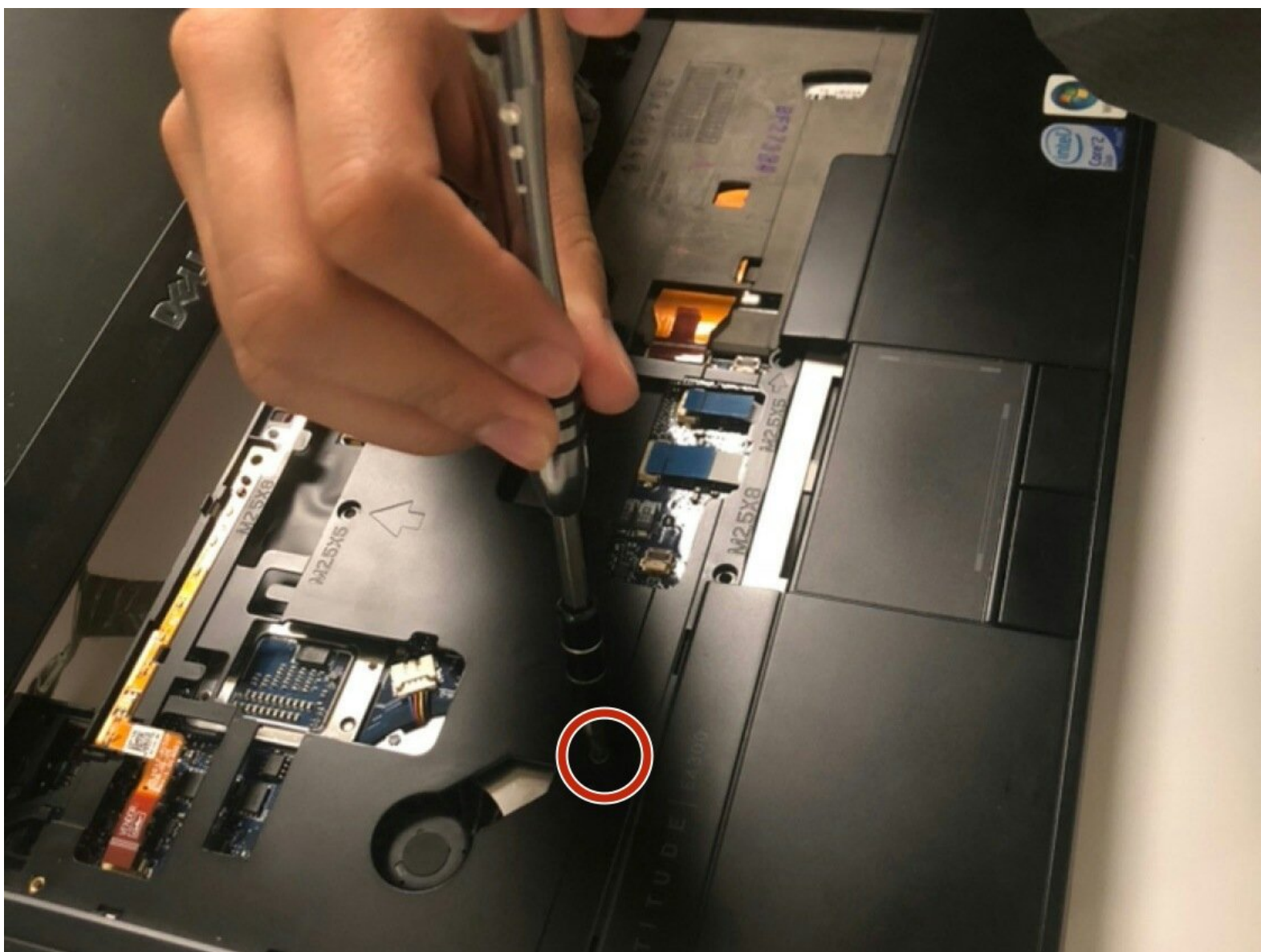




Dell Latitude E4300 Keyboard Docking Component Replacement

This guide will advise you on how to replace the docking panel that connects the keyboard to the rest of the computer.

Written By: Ryan Blakey



INTRODUCTION

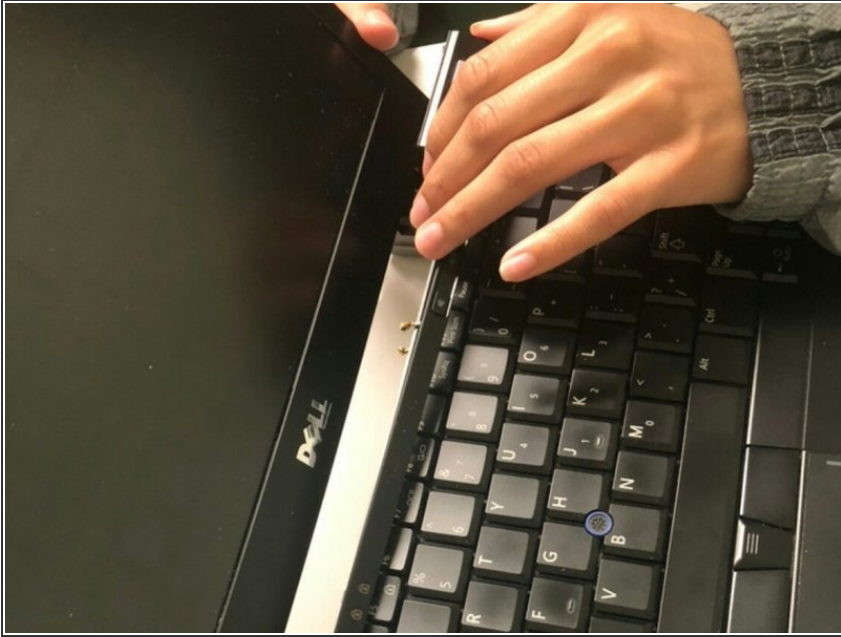
The keyboard docking component is the middle panel located between the keyboard and the internal components of the laptop. In order to replace components within the laptop , such as the motherboard, you will need to remove the panel. Use this guide for a step-by-step procedure.



TOOLS:

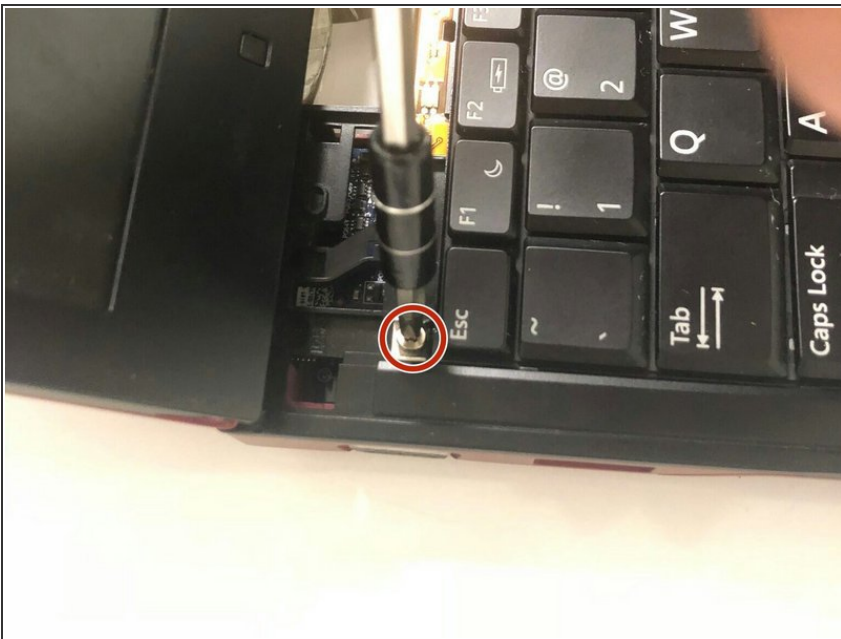
- [Phillips #1 Screwdriver](#) (1)
 - [Metal Spudger](#) (1)
-

Step 1 — Keyboard



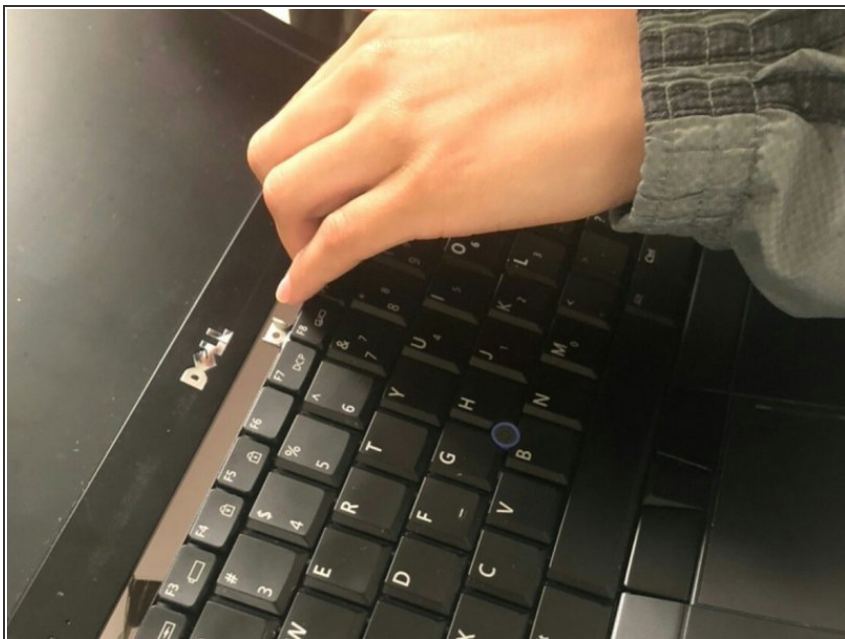
- Open the laptop and remove the small panel located above the keyboard.

Step 2



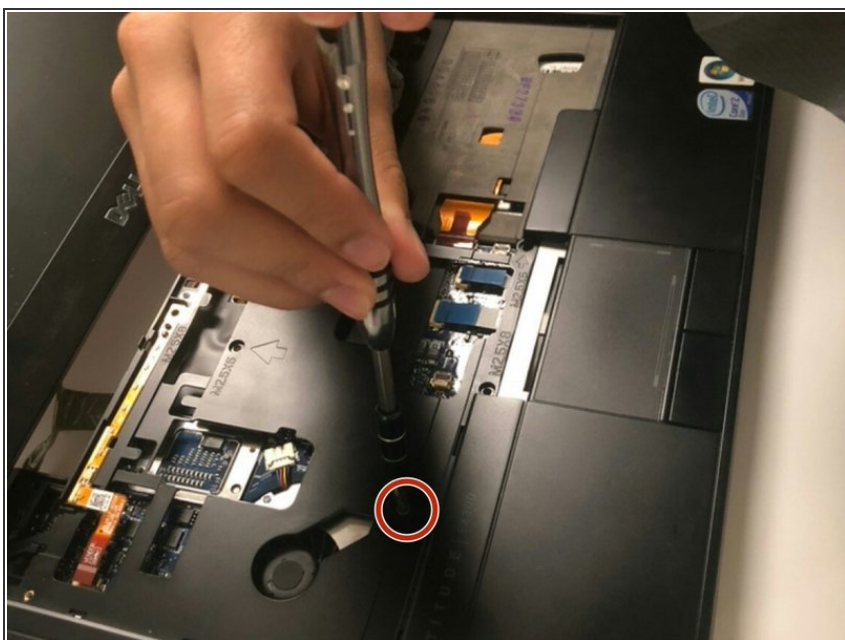
- Using a Phillips 1 Screwdriver, unscrew the three M2x3-mm screws located above the keyboard where the small panel was originally.

Step 3



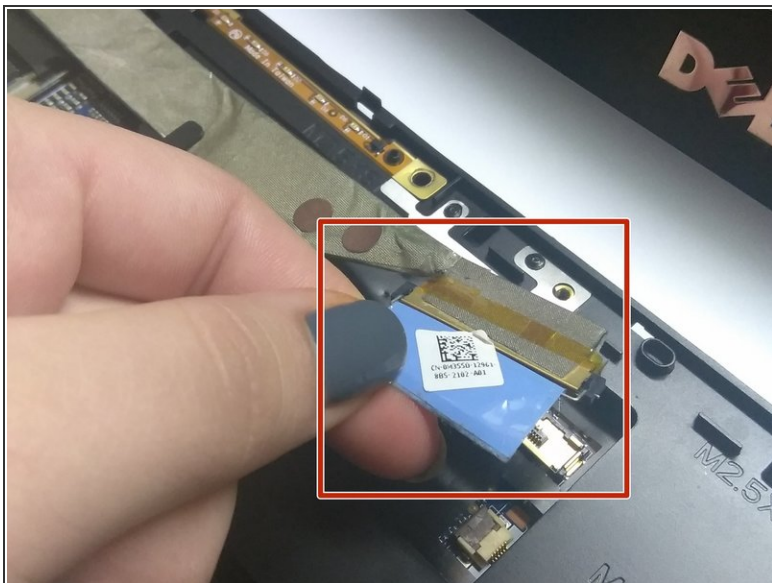
- Pull off keyboard forward and then outwards.
- ⓘ The keyboard is fragile, so make sure you pull the keyboard off carefully.

Step 4 — Keyboard Docking Component



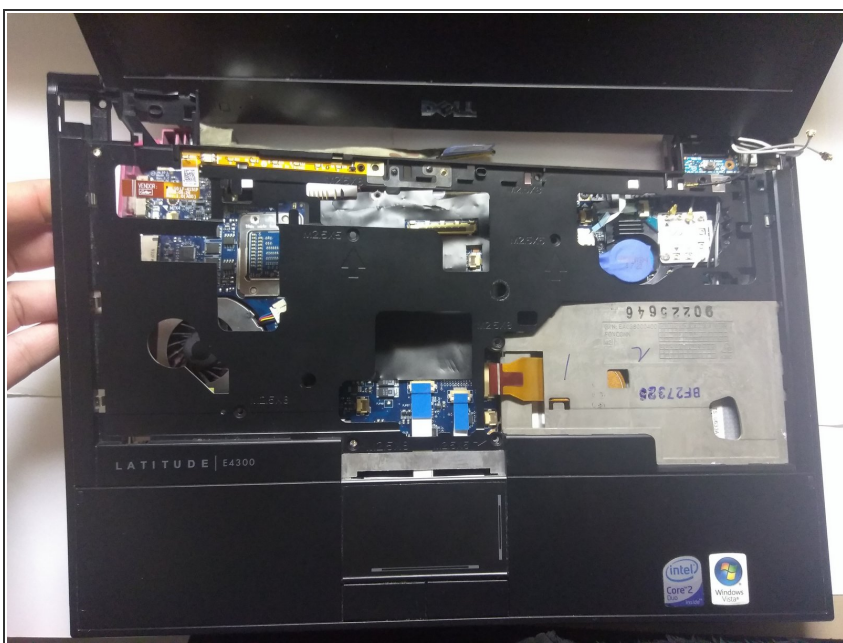
- With your Phillips 1 screwdriver, unscrew the five M2.5x5-mm screws and the five M2.5x8-mm screws that lie underneath the keyboard panel.
- Be aware there are two deeply recessed screws on both sides to the rear of this panel. There are also two screws externally on the rear face either side of the battery that hold the monitor on and pass through this panel, support the screen when you remove these. There are also two screws above the hard drive bay that need to be removed.

Step 5



- Remove additional wires located within the panel.
- ⓘ For the smaller wires, try using a spudger for easier access.

Step 6



- Lift the keyboard panel to separate the component from the rest of the device.

To reassemble your device, follow these instructions in reverse order.