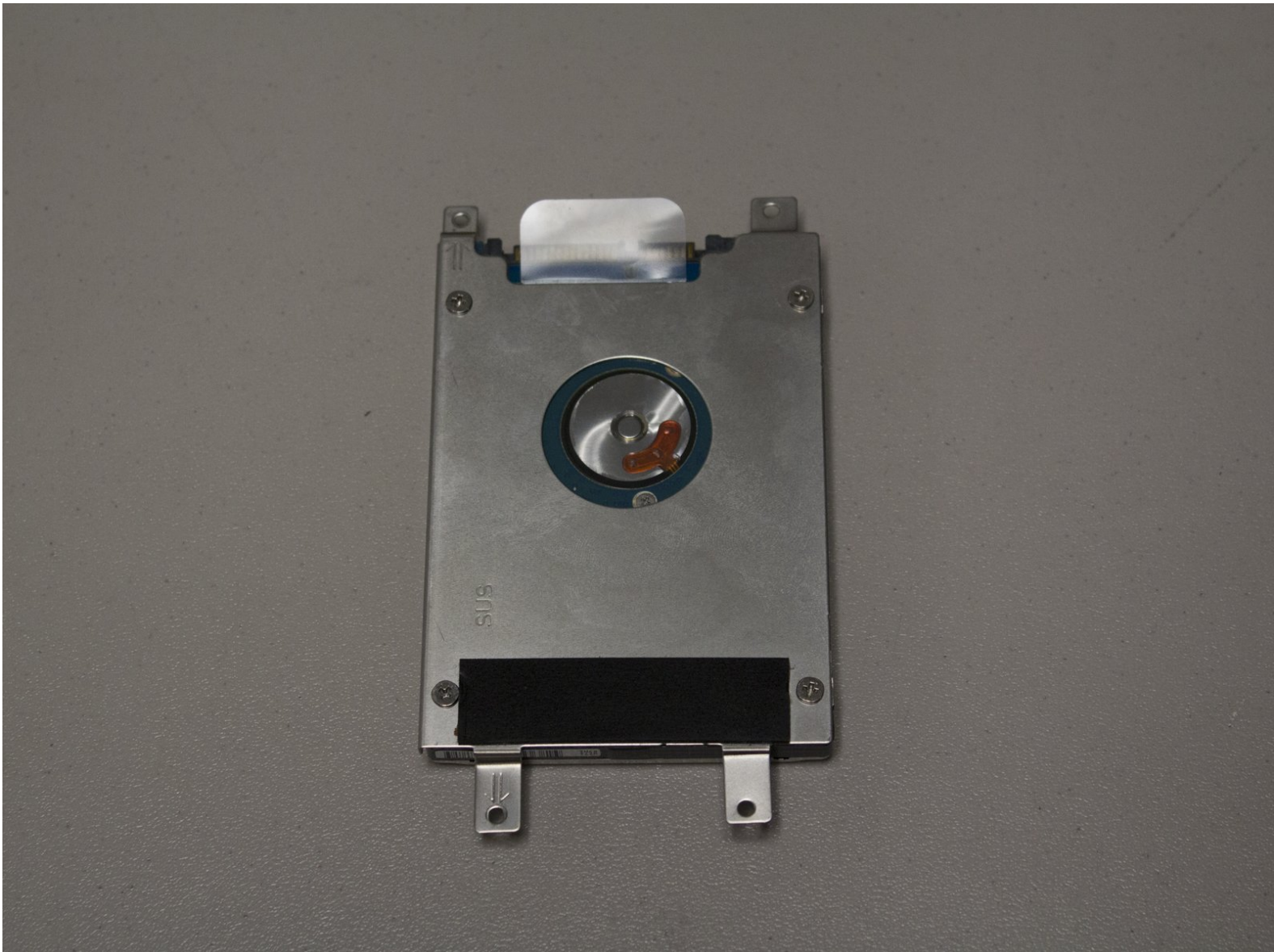




Sony VAIO SVE14AJ16L Hard Drive Replacement

Replacement steps for a hard disk drive in a Sony VAIO SVE14AJ16L Laptop.

Written By: Dustin Smith



INTRODUCTION

Replacement steps for a hard disk drive in a Sony VAIO SVE14AJ16L Laptop.



TOOLS:

- [Phillips #0 Screwdriver](#) (1)
-

Step 1 — Hard Drive



⚠ Turn off your laptop before starting.

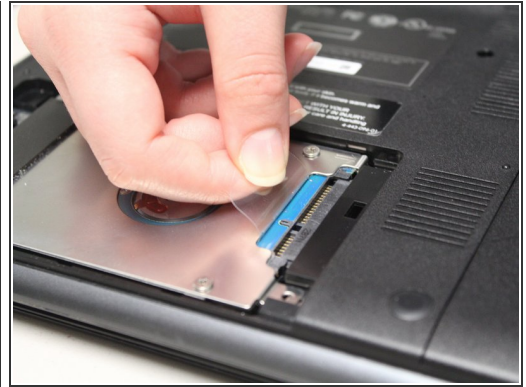
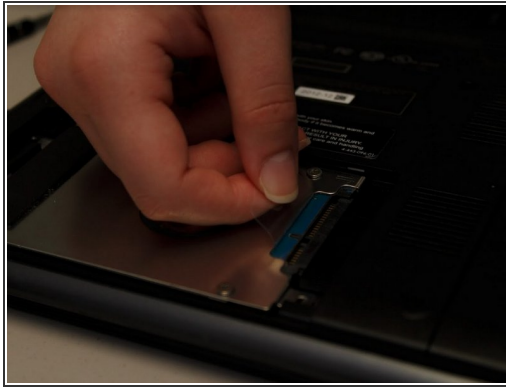
- Turn the closed laptop upside down so that the bottom is facing you.

Step 2



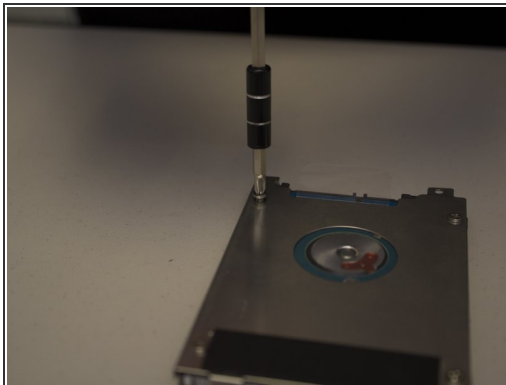
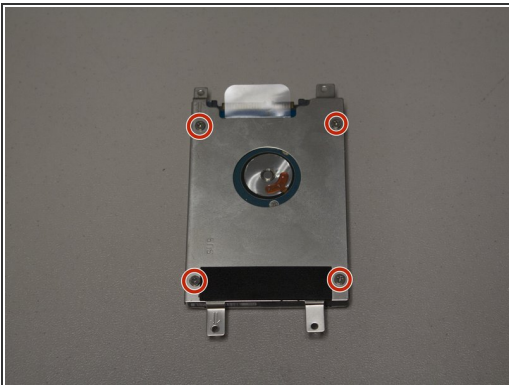
- Remove the two screws on the hard drive cover with a Phillips #0 screwdriver.
- Remove the hard drive cover.

Step 3



- Remove the two screws holding the hard drive in place with a Phillips #0 screwdriver.
- Using the plastic tab, slide the hard drive out away from the main portion of the laptop.
- Lift the hard drive out of the laptop using the tab.

Step 4



- Remove the four screws holding the hard drive bracket to the hard drive using a Phillips #0 screwdriver.

To reassemble your device, follow these instructions in reverse order.