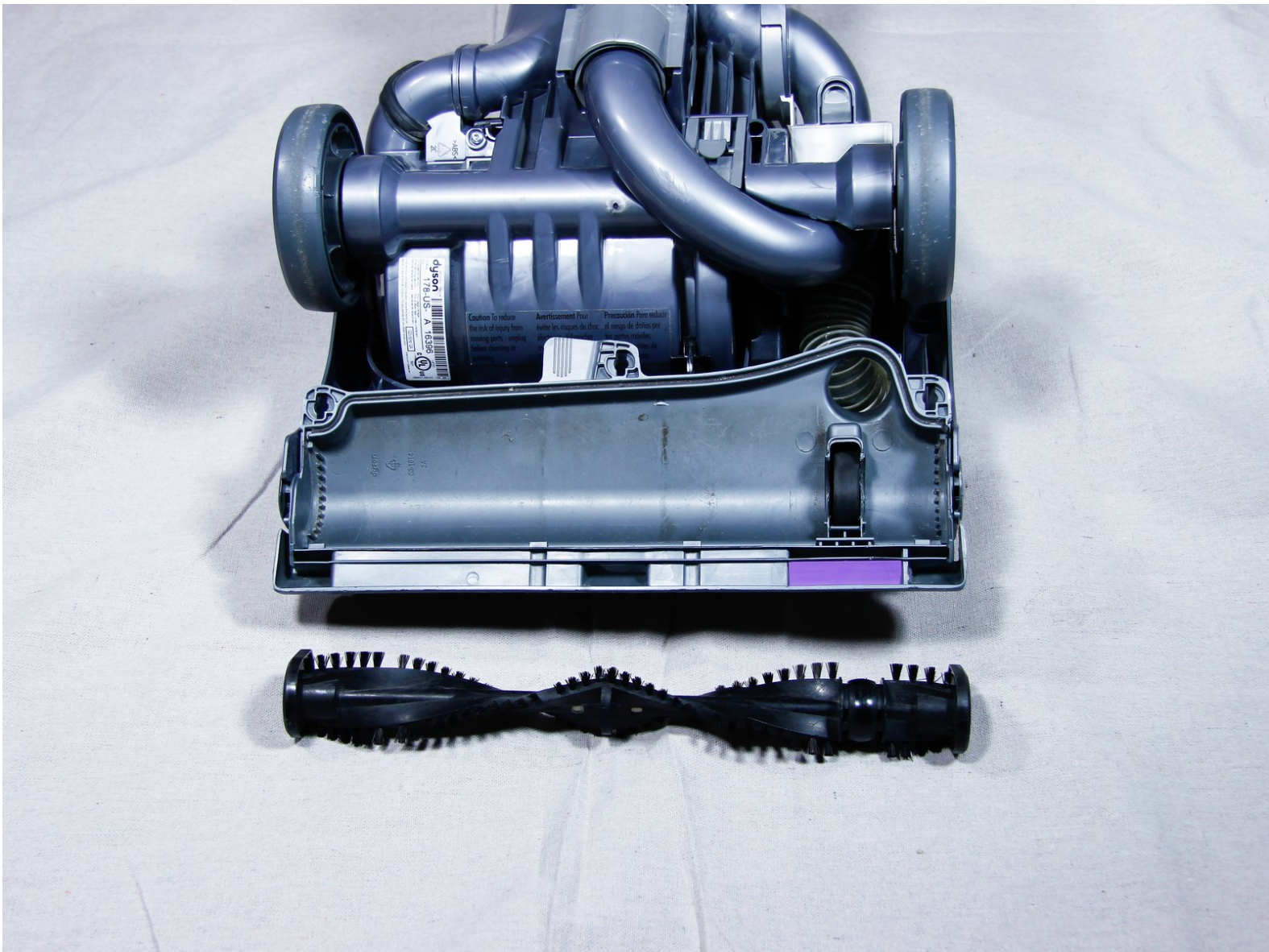




Dyson DC33 Brush Deep Clean

In addition to the light cleaning recommended in the user guide, from time to time hair and other debris must be cleared from the brush bearing.

Written By: Steve Bonds



INTRODUCTION

When the brush bar can't turn, the vacuum makes a horrible clicking-grinding noise while working on carpet. After about five to ten regular cleanings, chances are enough debris has managed to sneak around the end caps that this deep cleaning is needed.

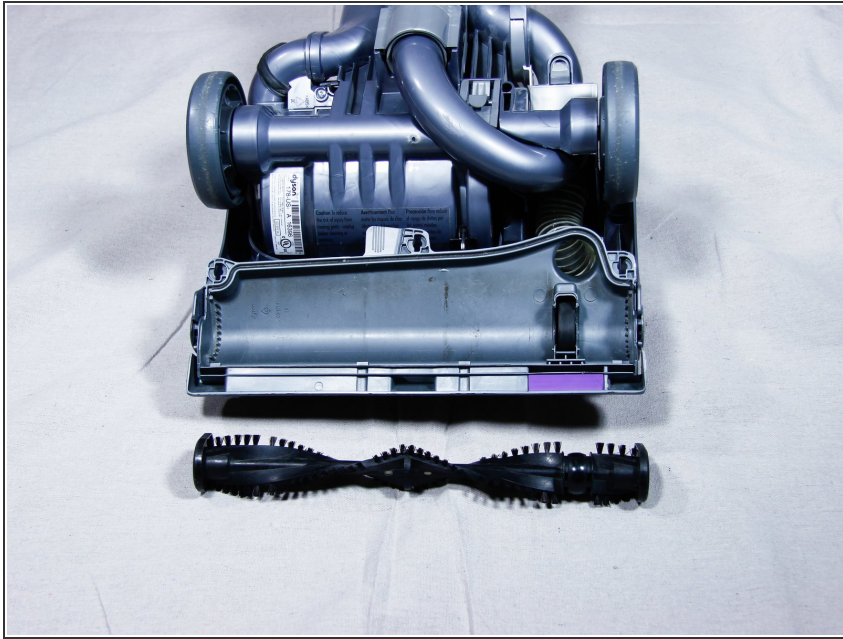
Ideally this gets done before the bar is so choked with hair that the friction starts melting it. This guide exists so that you can learn from the misfortune of others!



TOOLS:

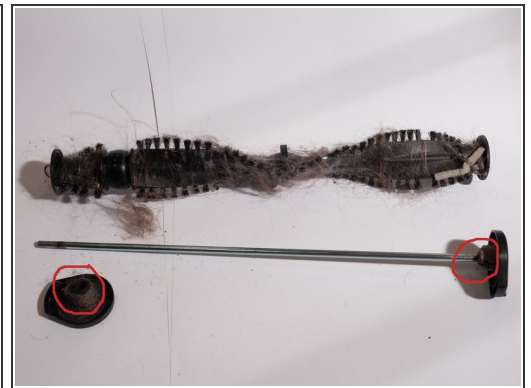
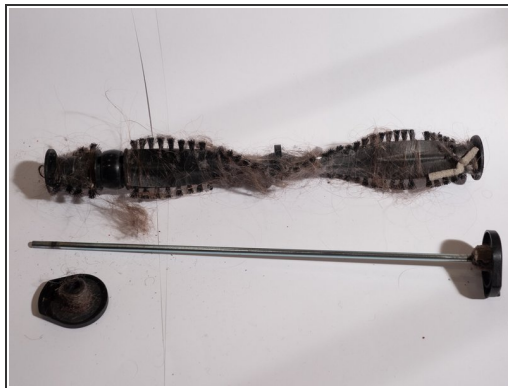
- [Coin](#) (1)
 - [Flathead Screwdriver](#) (1)
-

Step 1 — Remove Brush Bar



- [DC14 Brush Bar Replacement](#)
- Remove the brush bar following the process for the Dyson DC14 vacuum.

Step 2 — Remove End Caps from Brush Bar



- These are not threaded.
- Gently hold one end cap while pulling on the other. Wiggle back and forth to slide the cap off the rod running through the center of the brush bar.
- The spots where hair/debris needs to be removed are circled in red in the third photo.

Step 3 — Remove Debris from Behind End Caps



- Easy-- just grab the hair and debris and pull.

Step 4 — Brush Bar Repair or Replacement



- Problems created by the friction and heat can be trivially prevented with some routine maintenance once owners know that it needs to be done. The debris was causing enough friction and heat to actually melt the brush bar.
- The bearing itself is a metal ring with ball bearings at the end of the brush bar.
- The sleeve area where the hair and plastic melted together is not supposed to be a bearing surface. This means that it doesn't need to be very smooth so an unskilled scraping with a utility knife to remove the melted plastic and debris is good enough to make it work.
- Use a utility knife to carve/scrape away melted plastic and debris until it clears the end cap. It doesn't need to be pretty.
- Optionally, replace the whole brush bar if it's too far gone or the repair goes poorly.

Step 5 — Reassembly



- Insert the rod through the brush bar and press the cap back on the end.
- The hardest part is getting the end of the brush bar under that tight motor belt. Look for where it hangs up and use the screwdriver shaft to pull in an appropriate direction to allow the brush bar to slide a bit more through.
- Once the bar is in align the small end of the caps towards the back of the vacuum (as shown)
- When putting the cover back on, snap the front in first, then press the coin-operated tabs through their holes and turn with a coin.
- Congrats! You don't need a new vacuum or expensive repair!