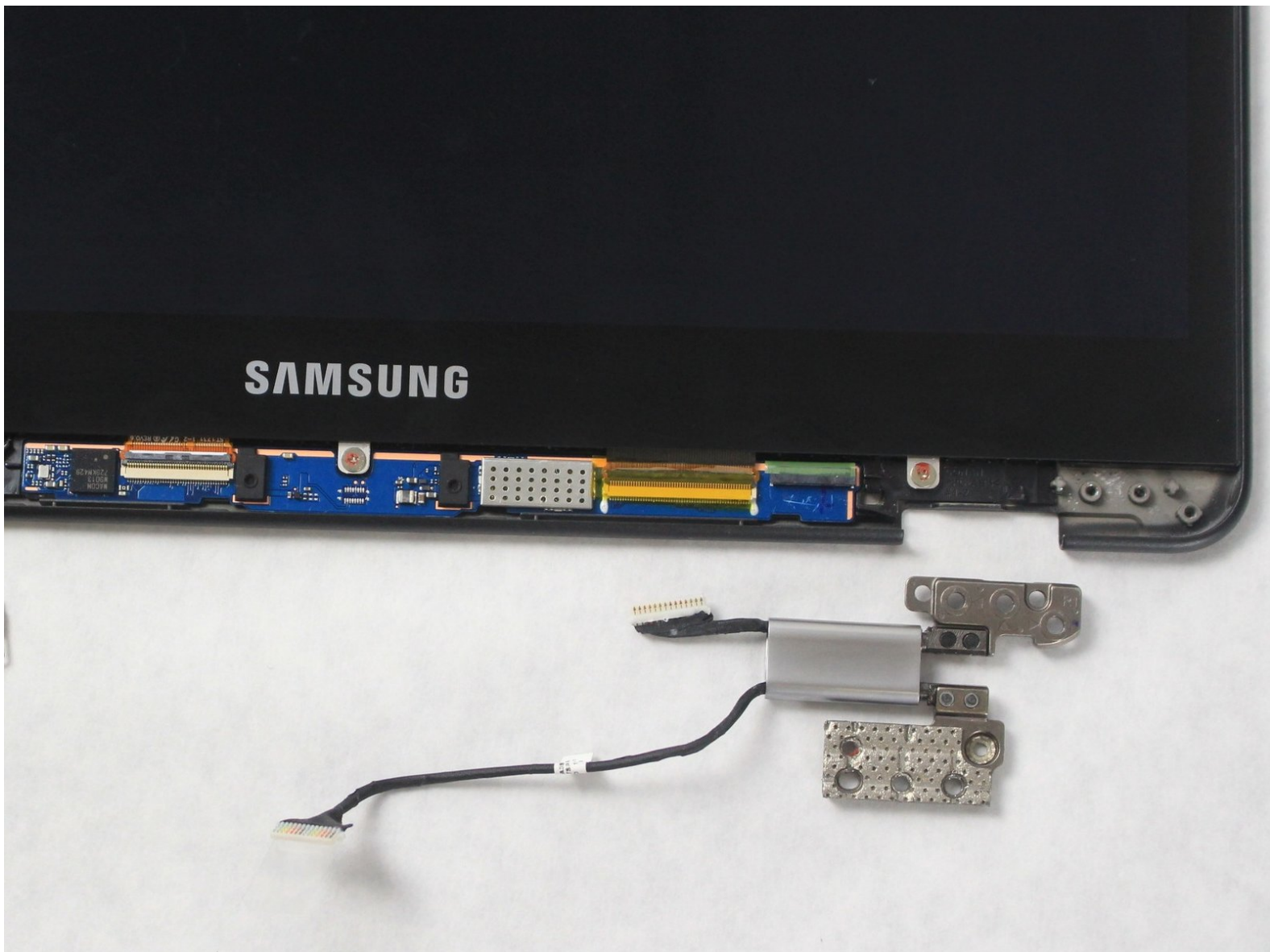




# Samsung Chromebook Pro Hinge Replacement

This guide displays the steps needed to replace the hinge on the Samsung Chromebook Pro.

Written By: Amber Castro-Beltran



# INTRODUCTION

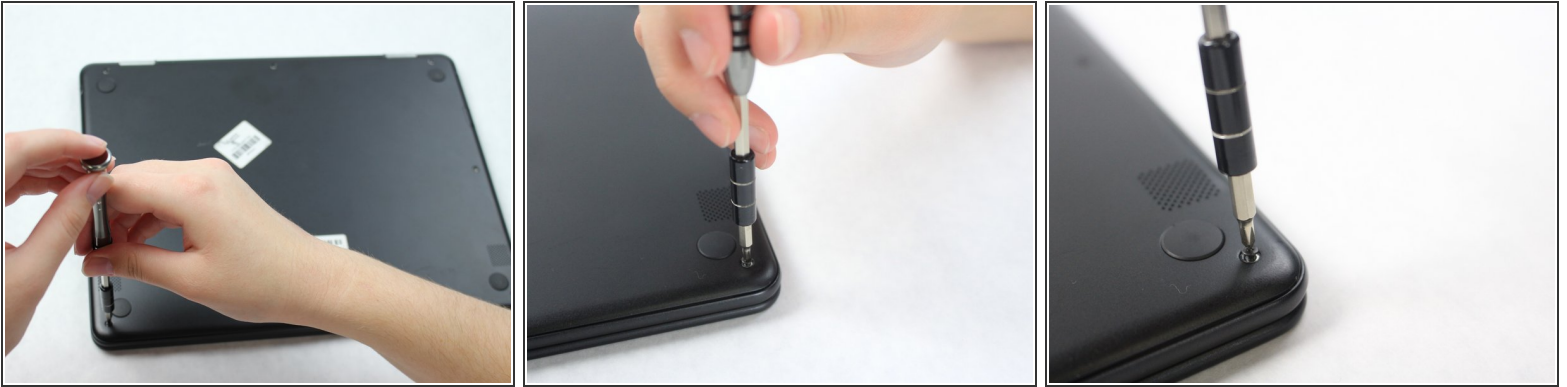
Use the guide below to help you replace the hinge for the Samsung Chromebook Pro.



## TOOLS:

- [JIS #000 Screwdriver](#) (1)
  - [iFixit Opening Tools](#) (1)
  - [Precision Tweezers Set](#) (1)
-

## Step 1 — Hinge



- Remove the eight 30 mm screws from the edges of the case with the JIS J000 screw bit.

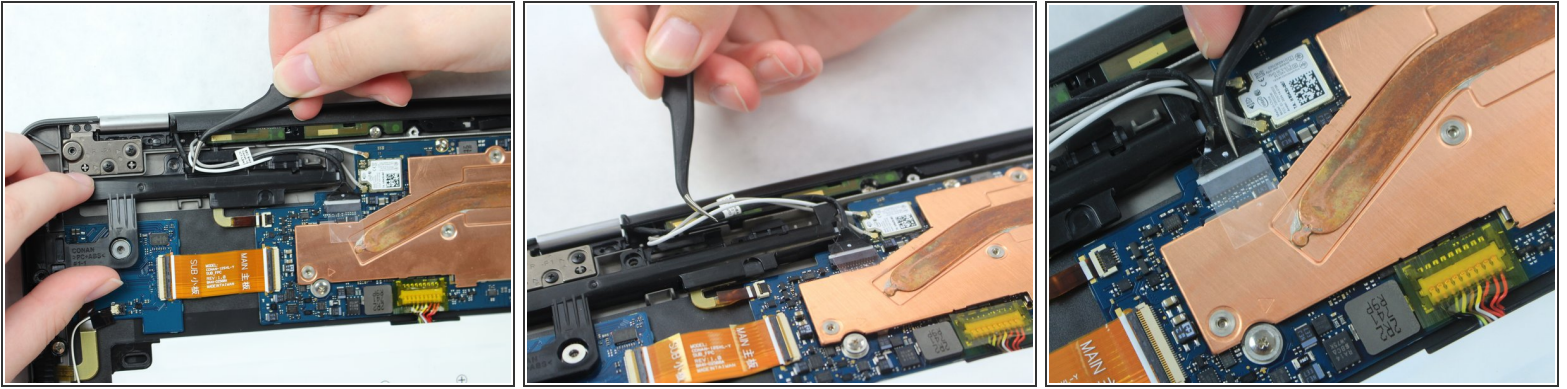
## Step 2



- Slide the plastic opening tool in a corner at a steep angle, and lift up to remove the outer case.

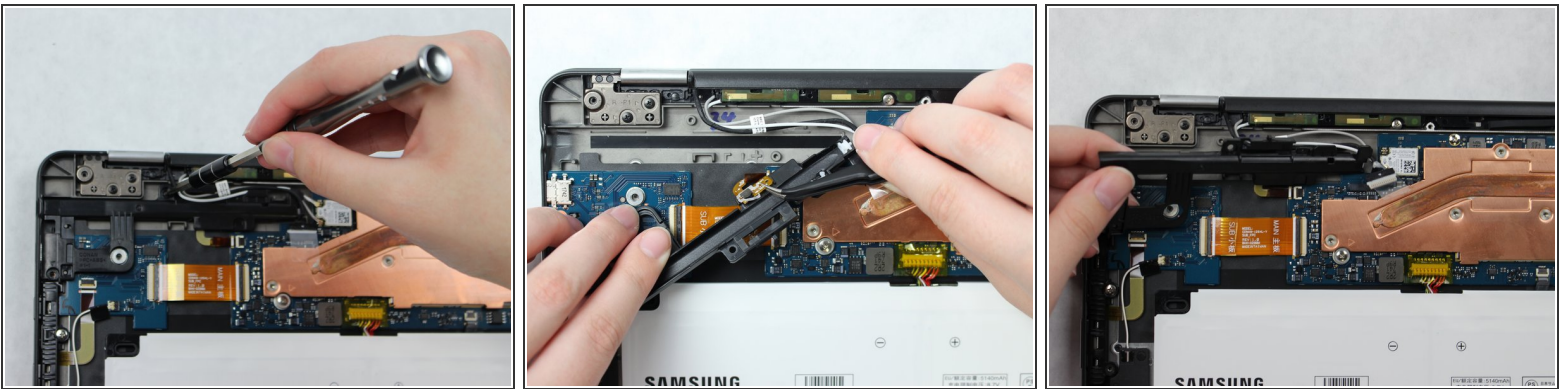


### Step 3



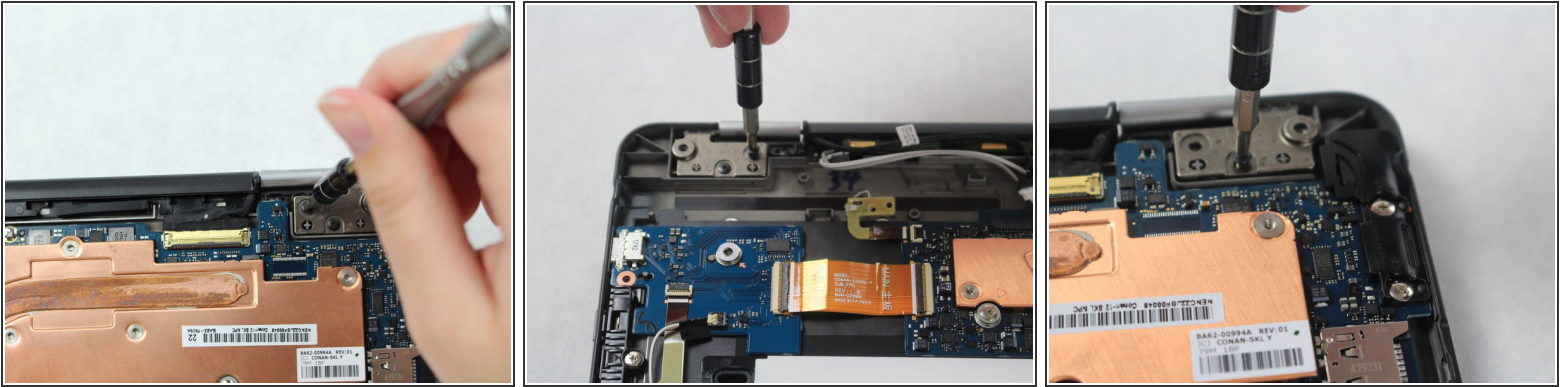
- Locate the two white wires and one black wire. With the flat precision tweezers, untangle the white wires from the CONAN >PC+ABS< # 1-1.
- Completely disconnect the black wire.

### Step 4



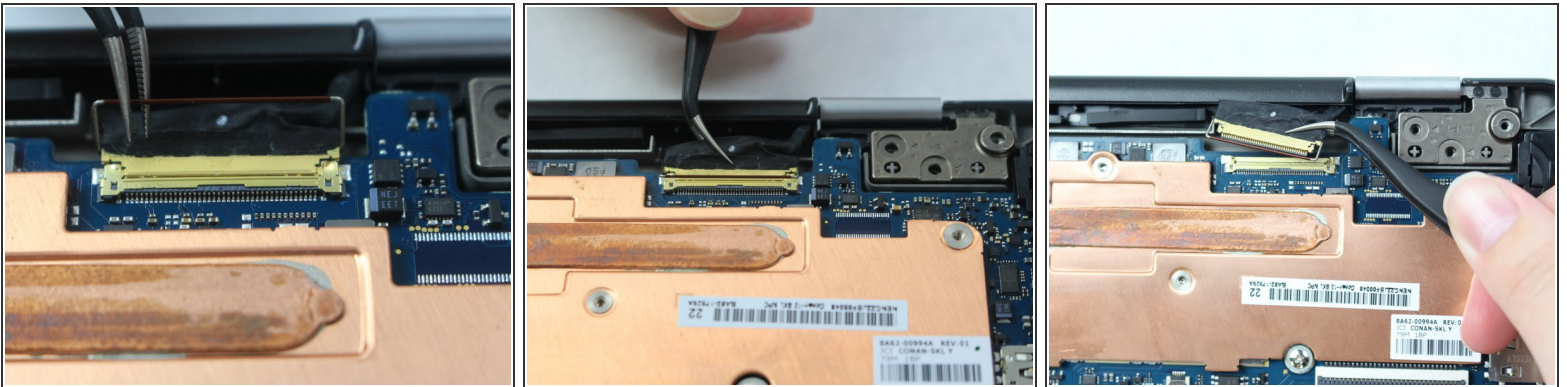
- Remove the three 30 mm screws using the JIS J000 screw bit from the black CONAN >PC+ABS< # 1-1 plate.
- Once all the screws are removed from the CONAN >PC+ABS< # 1-1 plate, remove the wire attached to underside and lift the plate to remove.

## Step 5



- Locate hinge plates LP1 and RP1 on the top left and right corners of the Chromebook.
- Remove the two 30 mm screws from hinge plates LP1 and RP1 using the JIS J000 screw bit.

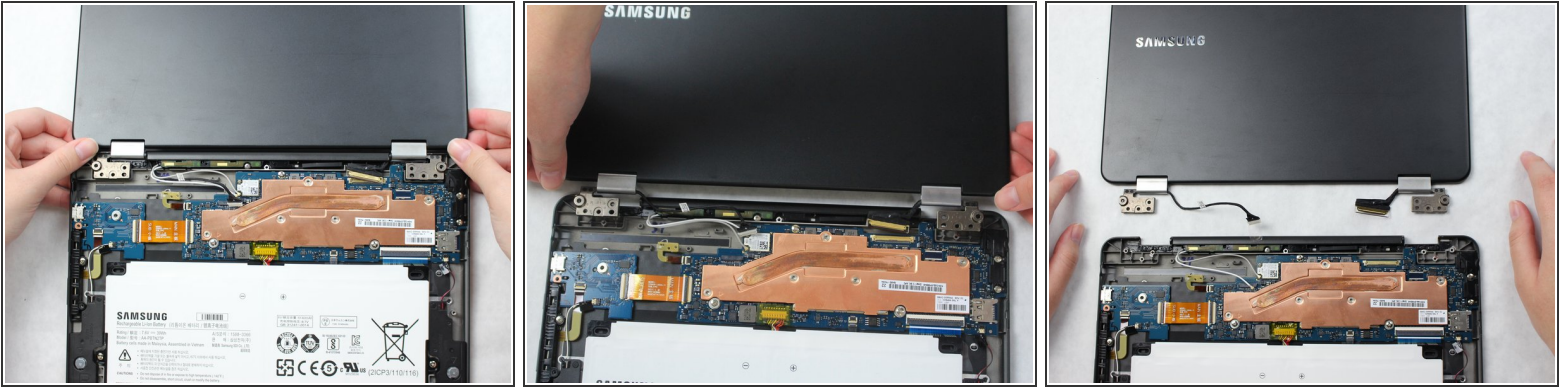
## Step 6



- On the right top corner, locate the black and gold wire.
- Lift the bar that is locking the wire in using the precision tweezers.
- Disconnect the wire by grasping the black portion with the precision tweezers, and then pulling away from the Chromebook Pro.

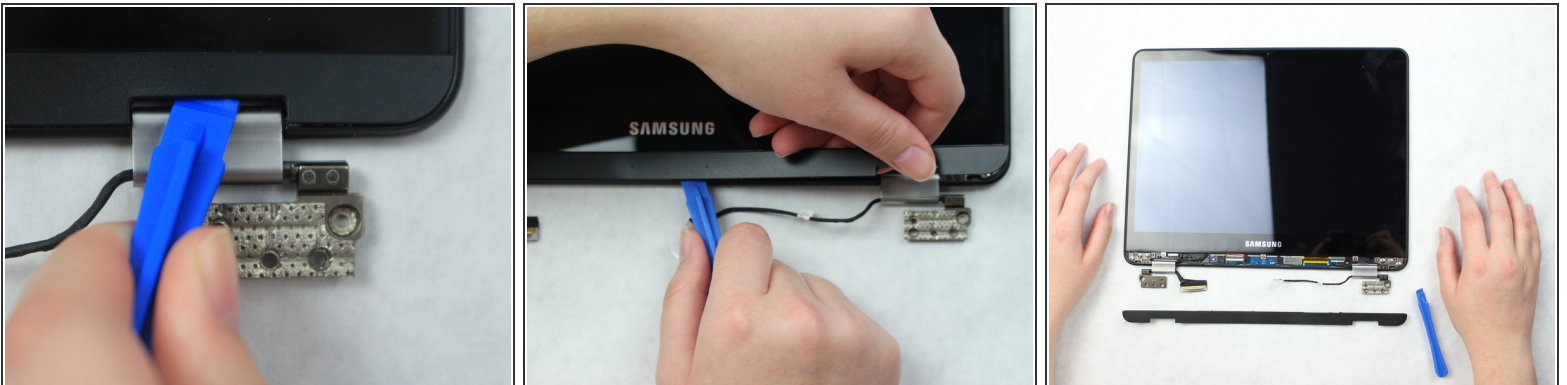


## Step 7



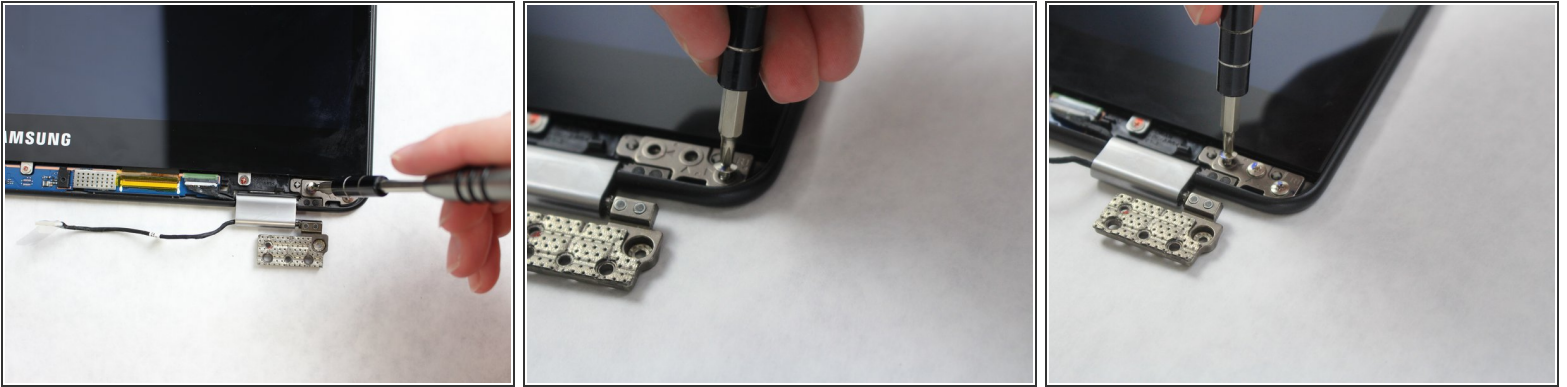
- Completely open the Chromebook and gently separate both halves.
- ⓘ Be careful not to pull any wires.

## Step 8



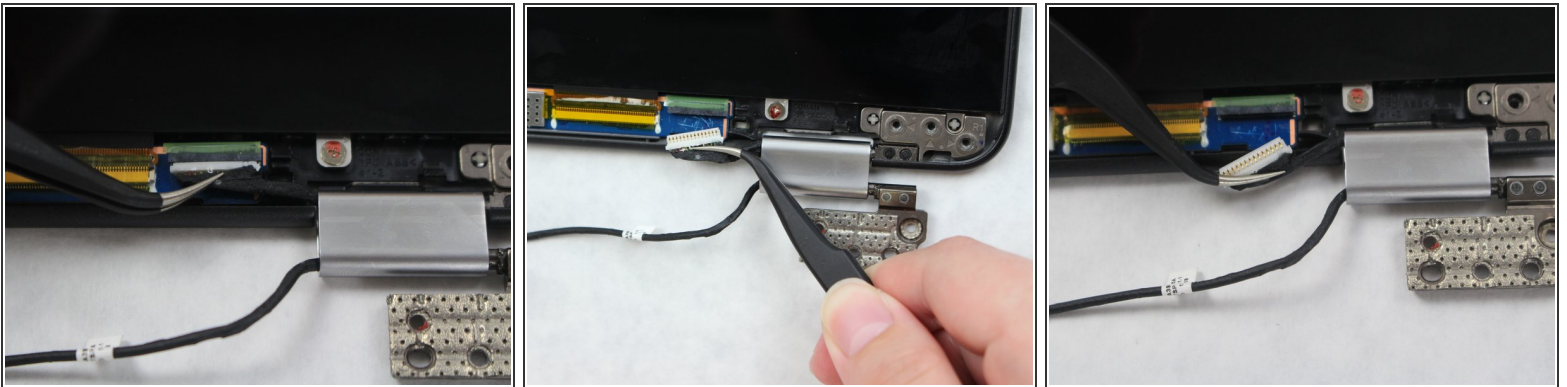
- ⓘ Make sure the Chromebook is facing up.
- Place the plastic opening tool at an angle in the gap between the hinge and Chromebook screen and lift up.
- Completely remove the plastic screen lining using the plastic opening tool.

## Step 9



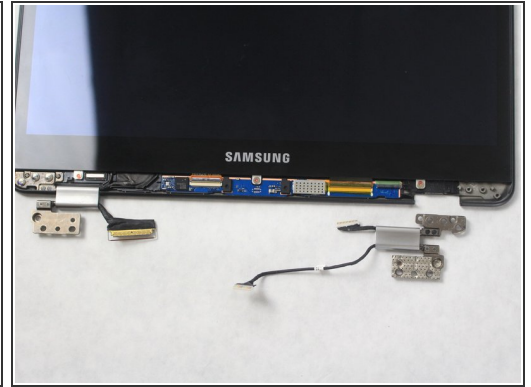
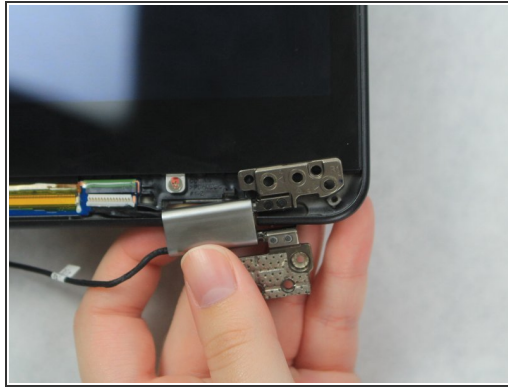
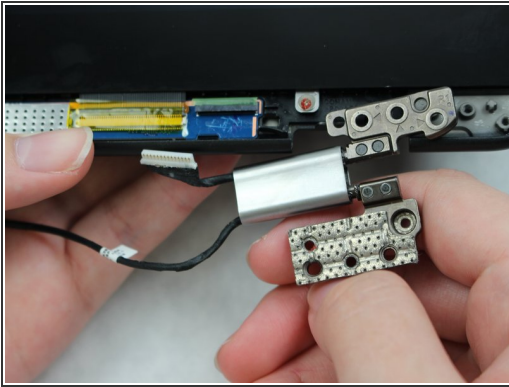
- Remove the three 30 mm screws from hinge plate R1 and L1 using the JIS J000 screw bit.

## Step 10



- Disconnect the black wire on the R1 plate connected to the screen using the precision tweezers.

## Step 11



- Lift the hinge to remove from the Samsung Chromebook Pro.

To reassemble your device, follow these instructions in reverse order.