



# ZTE Tempo Front Camera Replacement

If the camera is showing a black screen or the camera does not take a picture.

Written By: Dela Mohammed



---

## INTRODUCTION

If the camera is showing a black screen or the camera does not take a picture.



### TOOLS:

- [iFixit Opening Tools](#) (1)
  - [Phillips #0 Screwdriver](#) (1)
-

## Step 1 — Front Camera



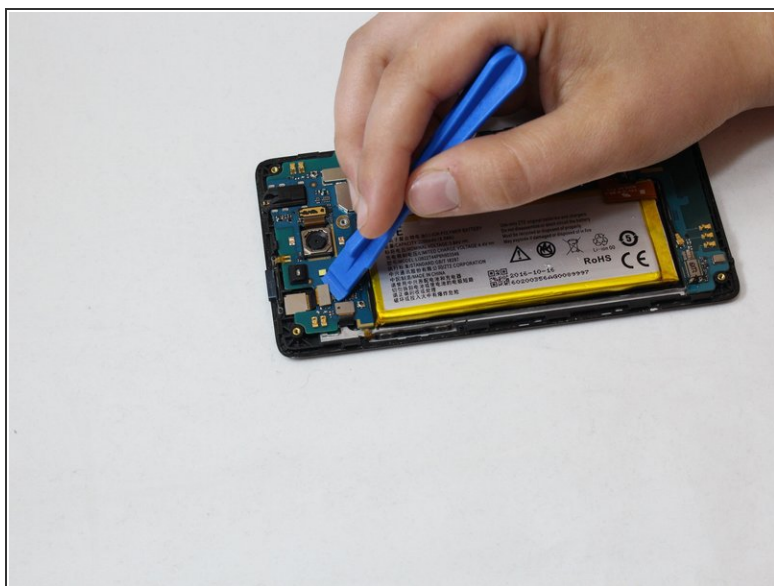
- Pry open the back case to get to the back cover.
- Remove eight 5mm screws with a PH0 screw.
- Pry open the back cover with a plastic opening tool.
- Slide the plastic opening tool alongside the side seam twisting your hand forcefully to open the back cover.
- Note: Pry open by finding an edge and forcing it open with the plastic opening tool.

## Step 2



- Use a plastic opening tool to lift the press-fit connector up and disconnect the battery ribbon cable.
- Lift the battery up and remove it from the phone.

## Step 3



- Use a plastic opening tool to lift the press-fit connector up and disconnect the front camera ribbon cable.
- Lift the front camera out of the phone.

To reassemble your device, follow these instructions in reverse order.