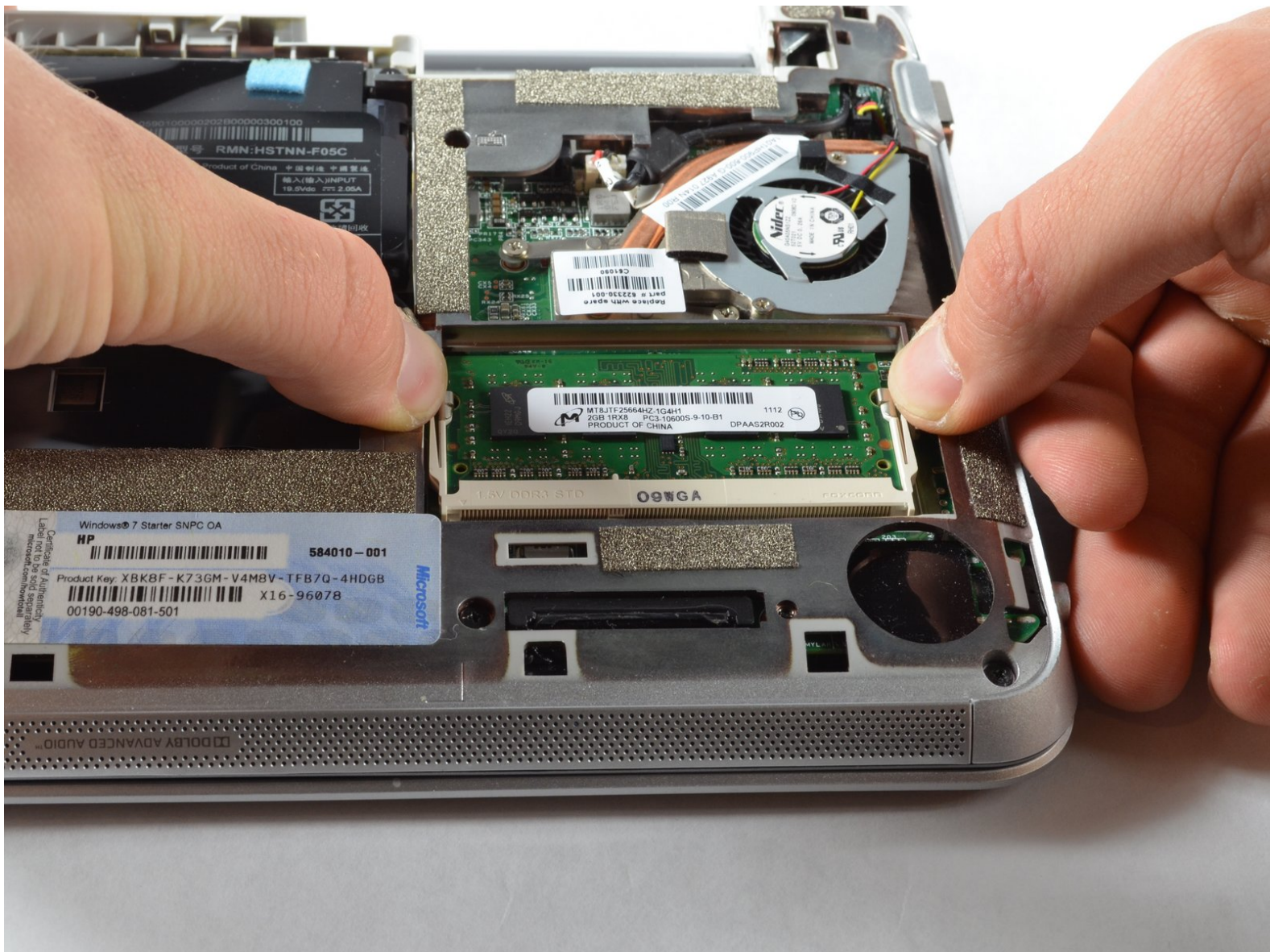




HP Mini 210-2070NR RAM Replacement

This is a step by step guide showing how to replace the RAM (Random Access Memory) Card. for the HP Mini 210-2070NR.

Written By: Sean Kuster



INTRODUCTION

Use this guide to replace your RAM Card. Replacing your RAM card for one of higher capacity will allow your system to perform better.



PARTS:

- [PC3-10600 2 GB RAM Chip](#) (1)
-

Step 1 — Battery and Service Access Cover



- ❗ Before beginning, make sure that your computer is turned off and all external power cords are disconnected.
- Close the laptop and turn it over so that the underside is up and the silver battery bay is facing towards you.

Step 2



- The battery locking latch is on the bottom right corner; slide it inward to unlock the battery.
- Slide the battery release latch inwards.
- Pull the battery towards you to remove it.

Step 3



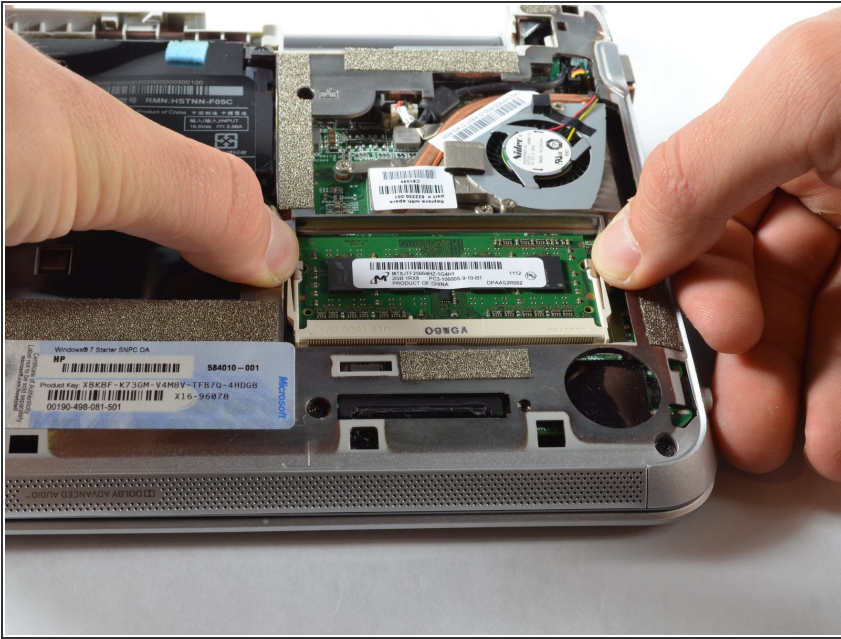
- Slide the service access cover release lever to the right.
- While holding the lever to the right, lift up the laptop's bottom cover gently and remove the cover.

Step 4



- Orient the computer as shown in the picture.

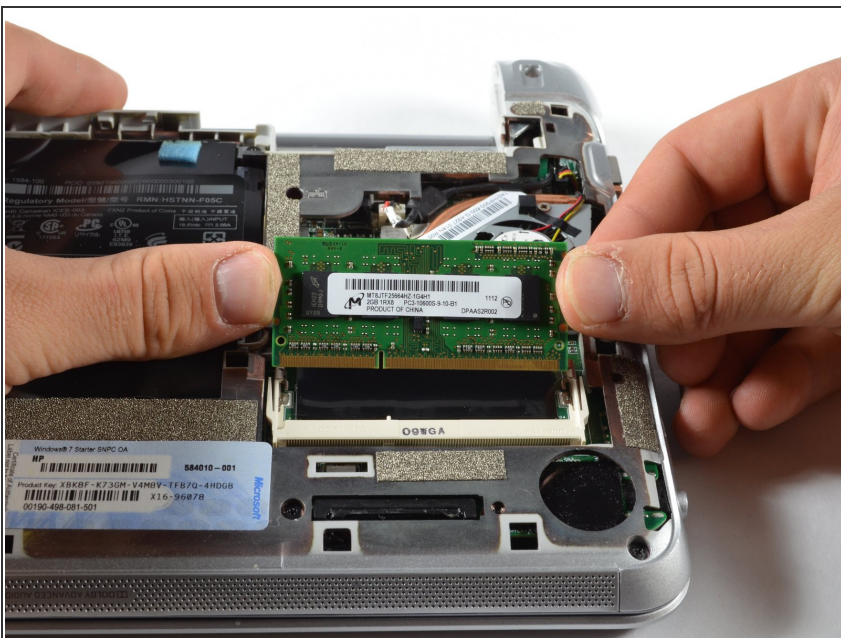
Step 5 — RAM



- Using your fingers, pull the two white clips (tabs) on both sides of the RAM away from each other. Keep pulling the clips until the RAM pops up

⚠ Hold the RAM on the edges only. Touching the components on the RAM might damage it.

Step 6



- Grab the edges of the module and gently lift it from the slot.
- ⓘ RAM Cards are designed with a notch on the surface to prevent incorrect insertion into the memory module slot.

To reassemble your device, follow these instructions in reverse order.