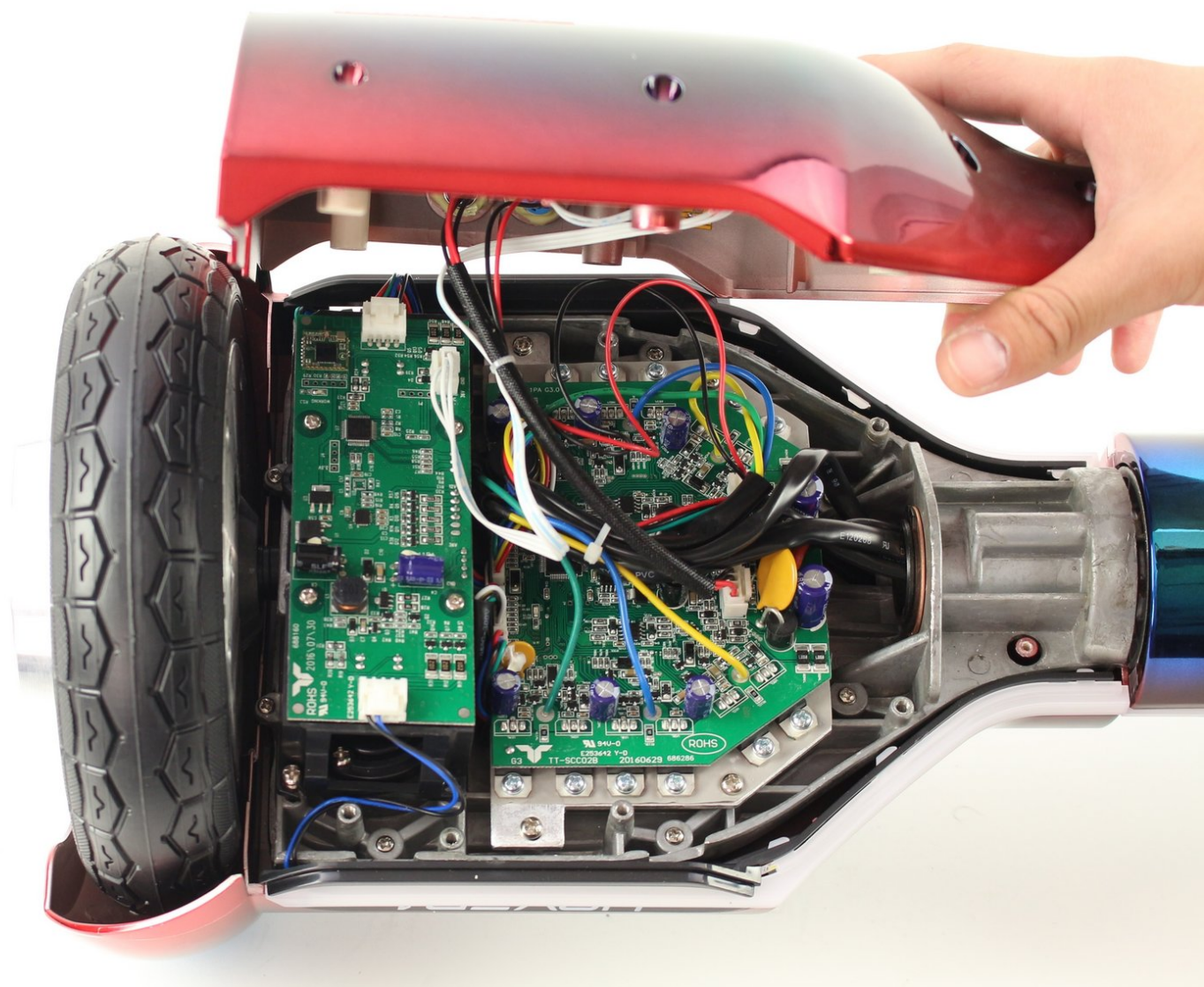




Hover-1 Horizon Base Plate Replacement

How to remove the base plate of your Hover-1 Horizon.

Written By: Jenny Dyer



INTRODUCTION

To access the internal components of the hoverboard, the base plate must be removed. This guide will show you how to remove the base plate of your Hover-1 Horizon.



TOOLS:

- [Phillips #1 Screwdriver](#) (1)
 - [Phillips #2 Screwdriver](#) (1)
-

Step 1 — Base Plate



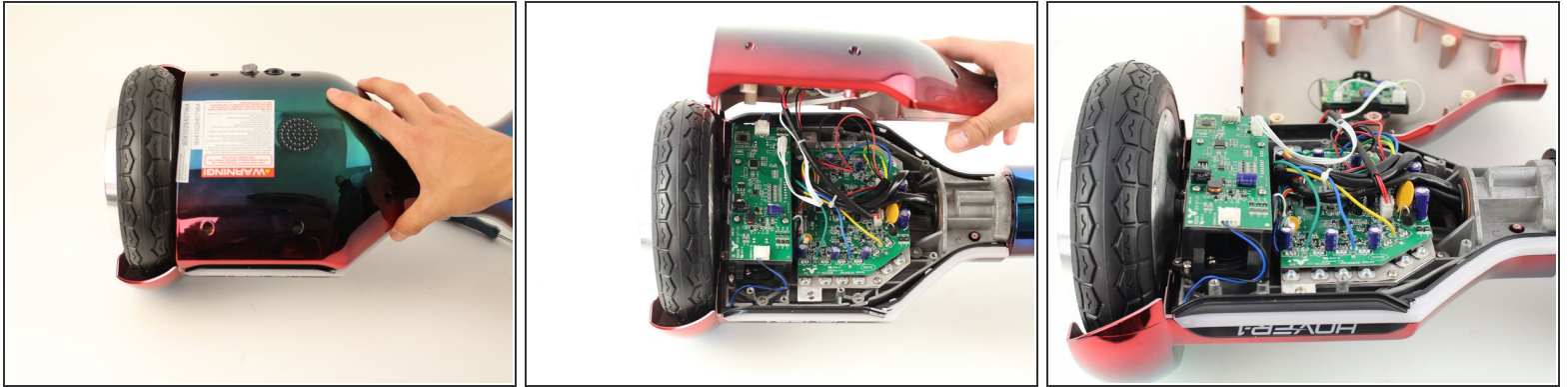
- Remove the six 12mm Phillips #2 screws holding the base plate.

Step 2



- Remove the two 11mm Phillips #1 screws that hold the base plate to the body.

Step 3



- Remove the base plate by lifting it up.
- ⓘ The base plate is connected to the body with wires. The wires are long enough to set the base plate to the side.

To reassemble your device, follow these instructions in reverse order.