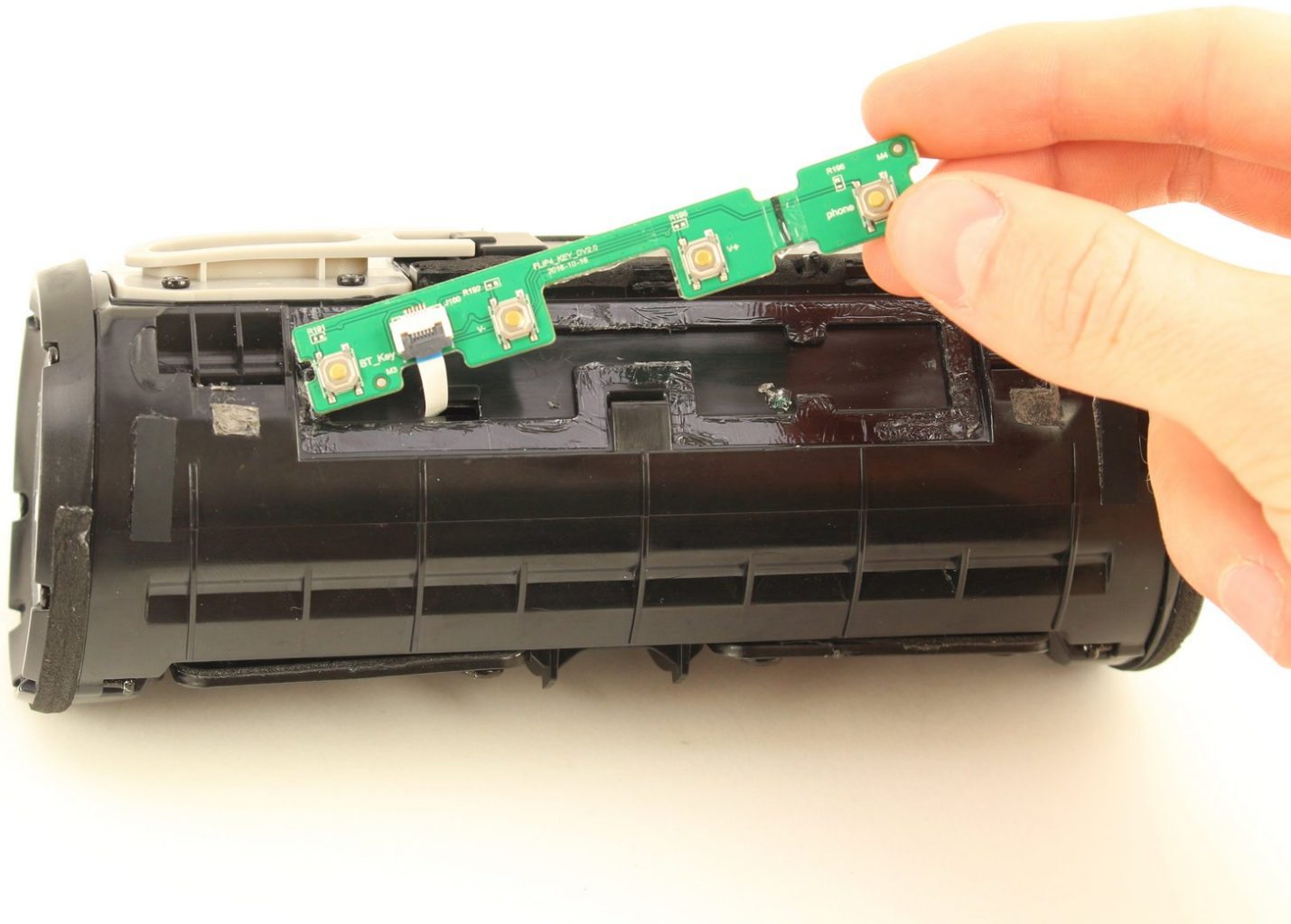




JBL Flip 4 Controls Board Replacement

This guide describes how you can replace the Controls Board of your JBL Flip 4.

Written By: Philip Pang



INTRODUCTION

If the buttons on your JBL Flip 4 are not responding or if your speaker is making electrical crackling sounds, the controls board may have developed faulty connections. This guide shows how you can access the controls board. Any electrical issues will need special attention.



TOOLS:

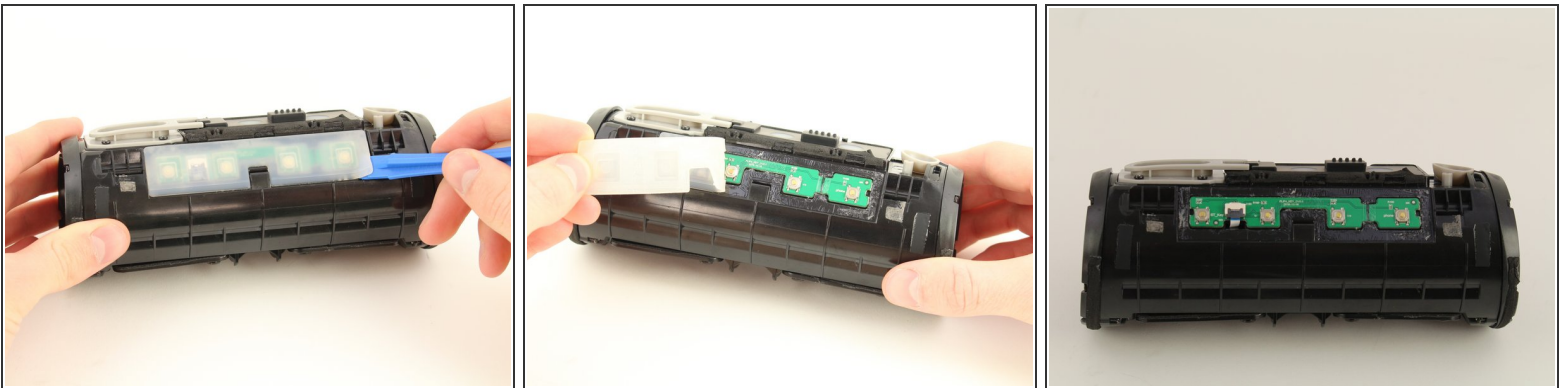
- [iFixit Opening Tools](#) (1)
 - [Metal Spudger](#) (1)
-

Step 1 — Controls Board



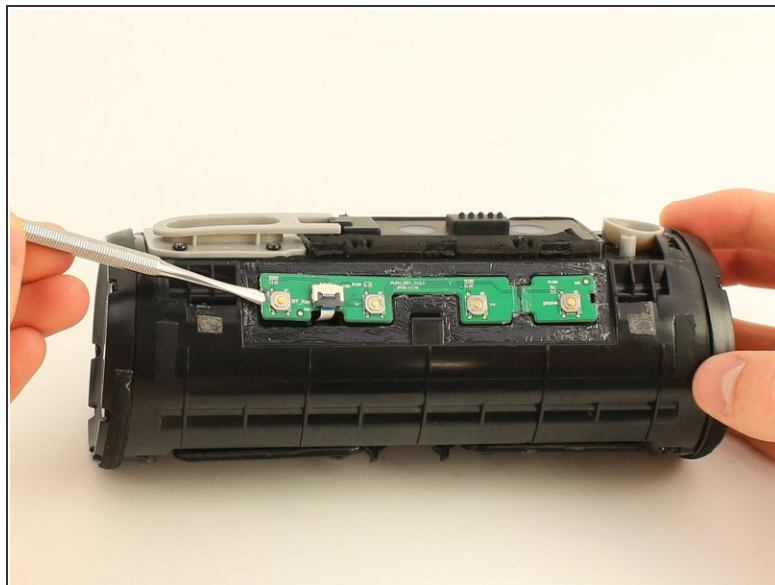
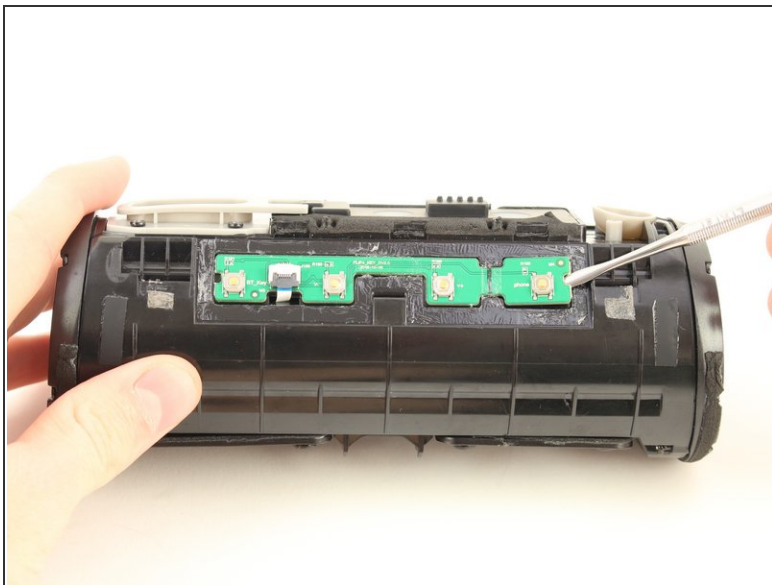
- Insert the plastic opening tool in the crack in between the cover and the rubber spine with the power button.
- Pry off the cover, beginning with the side without the volume and bluetooth buttons.
- ⓘ When prying the cover off, the six clips (three along each side of rubber spine) that attach the cover to the speaker will make snapping sounds.
- Pull off the cover off with your thumbs.

Step 2



- Insert the plastic opening tool under the clear rubber cover over the button control board.
- Pry up the cover using the opening tool.
- ⓘ The cover is glued on so it will take some force to pry up.

Step 3

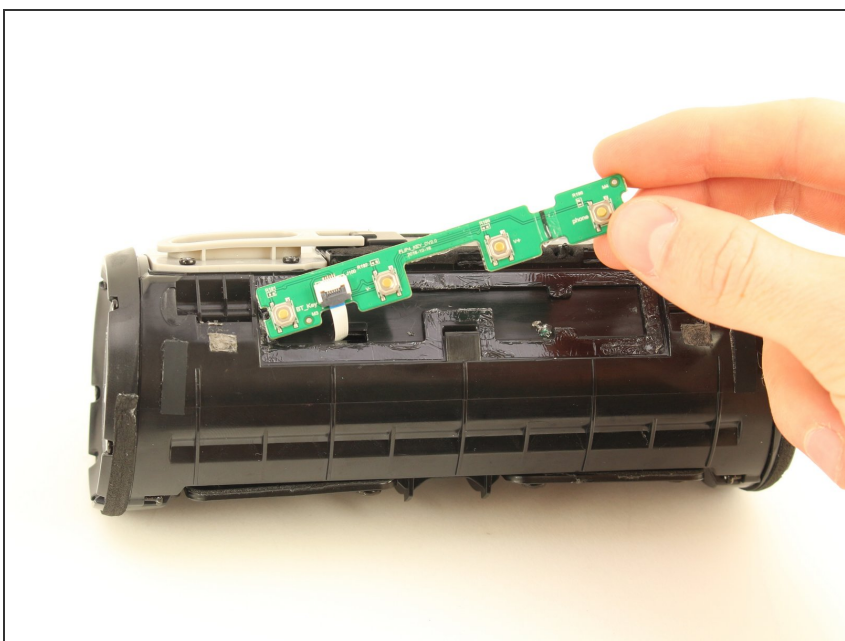


- Pry up the button control board by inserting the metal spudger underneath both sides of the board.

⚠ Try not to damage the green control board while using the metal tools.

i The control board is glued down as well, so you will need to use some force.

Step 4



- Once the board is partially unattached, pull it off using your hands.

To reassemble your device, follow these instructions in reverse order.