



# Saeco Vienna Sup 018 steam valve replacement

Replacement of the steam valve on a Saeco Vienna Sup 018

Written By: VauWeh



---

## INTRODUCTION

When the body on the steam valve is cracked, it has to be replaced. This will show how to do that.

---



### PARTS:

- [New Item](#) (1)
-

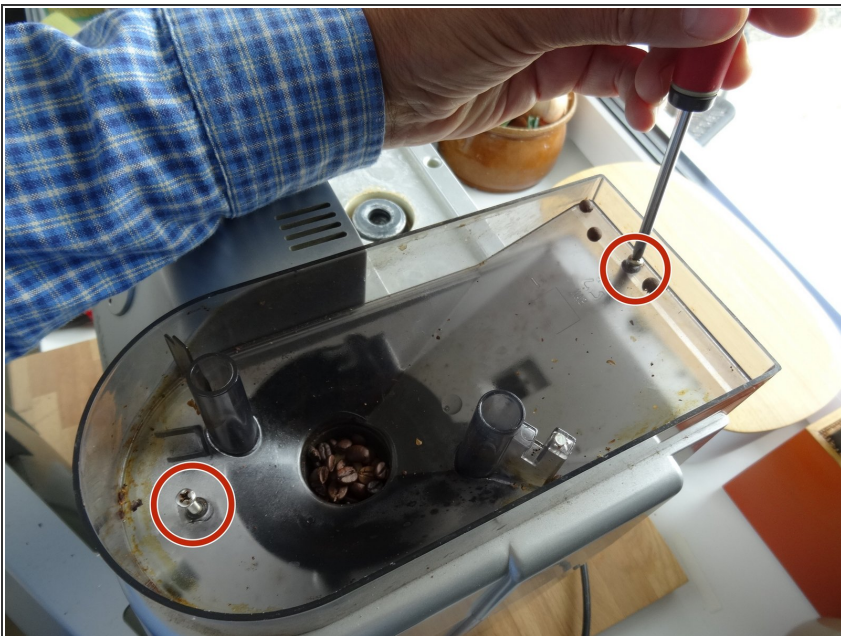
## Step 1 — Removing Saeco Vienna Sup 018 Top Cover



**⚠ Never forget: Pull the plug out!**

- Remove all attachments such as drawers, water tank, brewing unit.
- Carefully pull the steam button out. If it is too tight, first loosen the cover (steps 2 to 4), lift slightly and then push the ratchet nose with a small screwdriver.

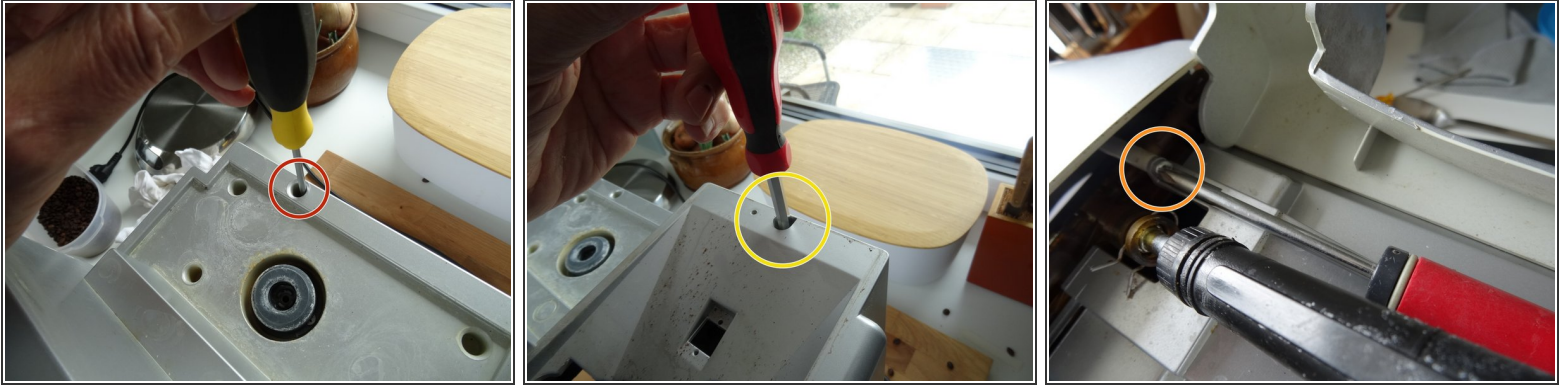
## Step 2



- The bean container is fixed with two Phillipps screws. Unscrew those.
- ⓘ The adjusters of the grinder and the quantity of coffee (if present) can remain.
- Lift the bean container up und remove it from the device.

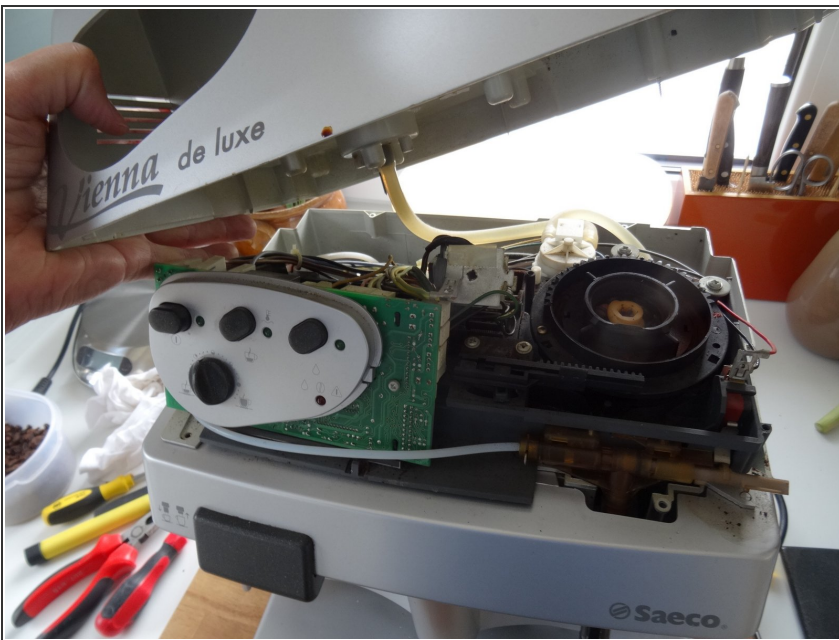


### Step 3



- Remove the single T10 Torx screw on the rear edge of the top cover under the water reservoir.
- Remove the single Phillips screw on the rear edge of the top cover under the container of the coffee beans.
- There are two Phillips screws on the frontal underside edge of the top cover. Turn them out.

### Step 4



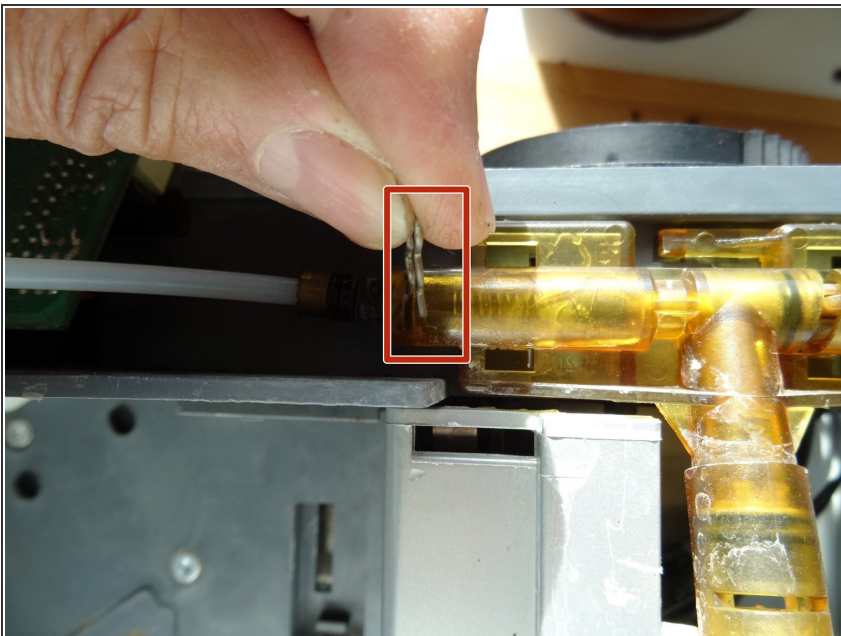
- Now the cover can be lifted off. Pull backwards, then diagonally forward. Remove the silicone hose from the water tank.

## Step 5 — Steam Valve



- The steam valve is located on the top right of the machine. If it has cracks, water will drip out of the valve body.

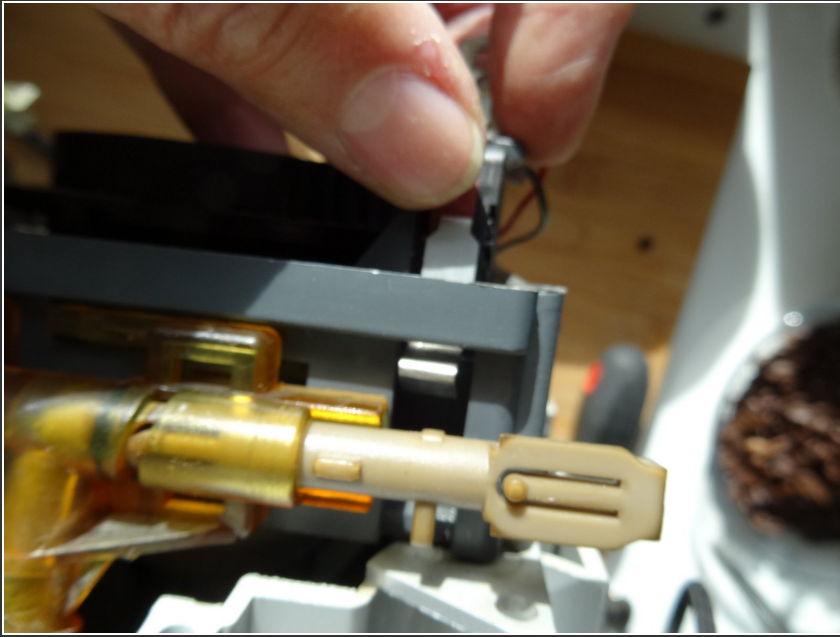
## Step 6



- Remove the clamp securing the pressure hose to the valve body.
- Disconnect the pressure hose from the valve body.
- ⓘ The end of the pressure hose is sealed with two O-rings. Those will either stick on the valve body or on the pressure hose. Whenever possible replace them when re-assembling.

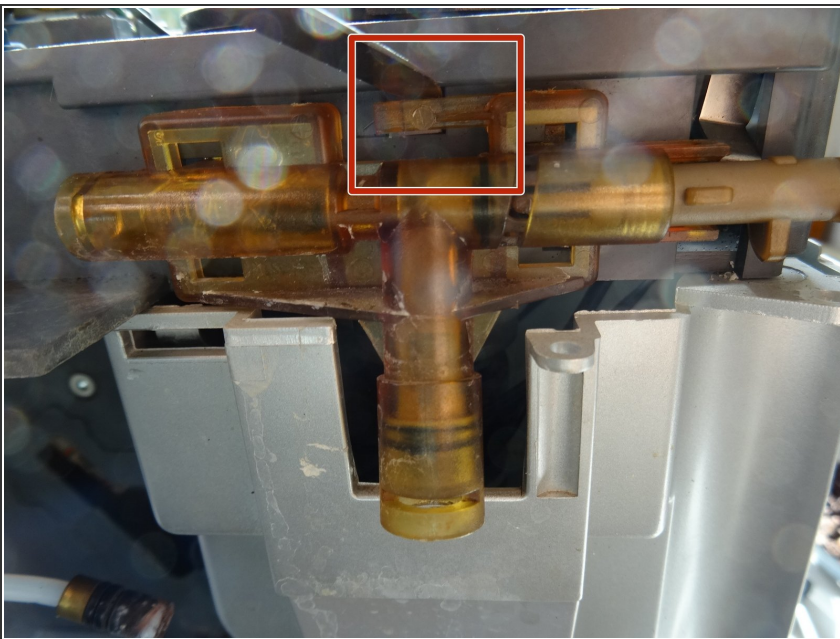


## Step 7



- ❗ The steam valve must be pushed to the right, but a microswitch will still be in the way.
- The microswitch is mounted on the underside of the gray frame with two notches. Insert a small screwdriver into the gap under the gray frame. Gently push the two notches one after the other and lift the microswitch upwards. The cables can stay connected.

## Step 8



- The steam valve is still secured with a catch. Lift the catch with a flat-head screwdriver and slide the complete valve to the right.
- To remove the valve it can now be pulled out of the gray frame in a forward direction.

To reassemble your device, follow these instructions in reverse order.